

World Journal of *Orthopedics*

World J Orthop 2021 July 18; 12(7): 456-514



EDITORIAL

- 456 Optimization of transdisciplinary management of elderly with femur proximal extremity fracture: A patient-tailored plan from orthopaedics to rehabilitation
de Sire A, Invernizzi M, Baricich A, Lippi L, Ammendolia A, Grassi FA, Leigheb M

REVIEW

- 467 Technological advancements in the analysis of human motion and posture management through digital devices
Roggio F, Ravalli S, Maugeri G, Bianco A, Palma A, Di Rosa M, Musumeci G

MINIREVIEWS

- 485 Arthrodesis of the first metatarsophalangeal joint: The “when and how”
Koutsouradis P, Savvidou OD, Stamatis ED

ORIGINAL ARTICLE**Retrospective Study**

- 495 Strategies and outcomes in severe open tibial shaft fractures at a major trauma center: A large retrospective case-series
Patel KH, Logan K, Krkovic M

Observational Study

- 505 Arthroscopic removal as an effective treatment option for intra-articular osteoid osteoma of the knee
Plečko M, Mahnik A, Dimnjaković D, Bojanić I

ABOUT COVER

Editorial Board Member of World Journal of Orthopedics, Patrick Sadoghi, MD, PhD, Associate Professor, Department of Orthopaedic Surgery, Medical University of Graz, Graz 8036, Austria. patricksadoghi@gmx.at

AIMS AND SCOPE

The primary aim of *World Journal of Orthopedics (WJO, World J Orthop)* is to provide scholars and readers from various fields of orthopedics with a platform to publish high-quality basic and clinical research articles and communicate their research findings online.

WJO mainly publishes articles reporting research results and findings obtained in the field of orthopedics and covering a wide range of topics including arthroscopy, bone trauma, bone tumors, hand and foot surgery, joint surgery, orthopedic trauma, osteoarthritis, osteoporosis, pediatric orthopedics, spinal diseases, spine surgery, and sports medicine.

INDEXING/ABSTRACTING

The *WJO* is now abstracted and indexed in PubMed, PubMed Central, Emerging Sources Citation Index (Web of Science), Scopus, China National Knowledge Infrastructure (CNKI), China Science and Technology Journal Database (CSTJ), and Superstar Journals Database. The 2021 edition of Journal Citation Reports® cites the 2020 Journal Citation Indicator (JCI) for *WJO* as 0.66. The *WJO*'s CiteScore for 2020 is 3.2 and Scopus CiteScore rank 2020: Orthopedics and Sports Medicine is 87/262.

RESPONSIBLE EDITORS FOR THIS ISSUE

Production Editor: Yan-Xia Xing; Production Department Director: Xiang Li; Editorial Office Director: Jin-Lai Wang.

NAME OF JOURNAL

World Journal of Orthopedics

ISSN

ISSN 2218-5836 (online)

LAUNCH DATE

November 18, 2010

FREQUENCY

Monthly

EDITORS-IN-CHIEF

Massimiliano Leigheb

EDITORIAL BOARD MEMBERS

<http://www.wjgnet.com/2218-5836/editorialboard.htm>

PUBLICATION DATE

July 18, 2021

COPYRIGHT

© 2021 Baishideng Publishing Group Inc

INSTRUCTIONS TO AUTHORS

<https://www.wjgnet.com/bpg/gerinfo/204>

GUIDELINES FOR ETHICS DOCUMENTS

<https://www.wjgnet.com/bpg/GerInfo/287>

GUIDELINES FOR NON-NATIVE SPEAKERS OF ENGLISH

<https://www.wjgnet.com/bpg/gerinfo/240>

PUBLICATION ETHICS

<https://www.wjgnet.com/bpg/GerInfo/288>

PUBLICATION MISCONDUCT

<https://www.wjgnet.com/bpg/gerinfo/208>

ARTICLE PROCESSING CHARGE

<https://www.wjgnet.com/bpg/gerinfo/242>

STEPS FOR SUBMITTING MANUSCRIPTS

<https://www.wjgnet.com/bpg/GerInfo/239>

ONLINE SUBMISSION

<https://www.f6publishing.com>

Technological advancements in the analysis of human motion and posture management through digital devices

Federico Roggio, Silvia Ravalli, Grazia Maugeri, Antonino Bianco, Antonio Palma, Michelino Di Rosa, Giuseppe Musumeci

ORCID number: Federico Roggio 0000-0001-7655-4489; Silvia Ravalli 0000-0003-3358-1086; Grazia Maugeri 0000-0003-0173-4885; Antonino Bianco 0000-0001-8334-6581; Antonio Palma 0000-0002-5387-468X; Michelino Di Rosa 0000-0012-5610-1248; Giuseppe Musumeci 0000-0002-8260-8890.

Author contributions: Roggio F manuscript writing and preparation, figure preparation; Ravalli S and Maugeri G contributed to the manuscript writing; Bianco A and Palma A provided inputs into the manuscript writing; Di Rosa M suggested form advice; Musumeci G designed the aim of the review and supervised the manuscript writing.

Supported by University Research Project Grant, No. PIACERI Found - NATURE-OA - 2020-2022.

Conflict-of-interest statement: All other authors have no competing interests to declare.

Open-Access: This article is an open-access article that was selected by an in-house editor and fully peer-reviewed by external reviewers. It is distributed in accordance with the Creative Commons Attribution NonCommercial (CC BY-NC 4.0)

Federico Roggio, Antonino Bianco, Antonio Palma, Department of Psychology, Educational Science and Human Movement, University of Palermo, Palermo 90144, Italy

Silvia Ravalli, Grazia Maugeri, Michelino Di Rosa, Giuseppe Musumeci, Department of Biomedical and Biotechnological Sciences, Human Anatomy and Histology Section, School of Medicine, University of Catania, Catania 95123, Italy

Giuseppe Musumeci, Research Center on Motor Activities, University of Catania, Catania 95123, Italy

Giuseppe Musumeci, Department of Biology, College of Science and Technology, Temple University, Philadelphia, PA 19122, United States

Corresponding author: Giuseppe Musumeci, PhD, Department of Biomedical and Biotechnological Sciences, Human Anatomy and Histology Section, School of Medicine, University of Catania, Via S. Sofia 87, Catania 95125, Italy. g.musumeci@unict.it

Abstract

Technological development of motion and posture analyses is rapidly progressing, especially in rehabilitation settings and sport biomechanics. Consequently, clear discrimination among different measurement systems is required to diversify their use as needed. This review aims to resume the currently used motion and posture analysis systems, clarify and suggest the appropriate approaches suitable for specific cases or contexts. The currently gold standard systems of motion analysis, widely used in clinical settings, present several limitations related to marker placement or long procedure time. Fully automated and markerless systems are overcoming these drawbacks for conducting biomechanical studies, especially outside laboratories. Similarly, new posture analysis techniques are emerging, often driven by the need for fast and non-invasive methods to obtain high-precision results. These new technologies have also become effective for children or adolescents with non-specific back pain and postural insufficiencies. The evolutions of these methods aim to standardize measurements and provide manageable tools in clinical practice for the early diagnosis of musculoskeletal pathologies and to monitor daily improvements of each patient. Herein, these devices and their uses are described, providing researchers, clinicians, orthopedics, physical therapists, and sports coaches an effective guide to use new technologies in their practice as instruments of

license, which permits others to distribute, remix, adapt, build upon this work non-commercially, and license their derivative works on different terms, provided the original work is properly cited and the use is non-commercial. See: <http://creativecommons.org/licenses/by-nc/4.0/>

Manuscript source: Invited manuscript

Specialty type: Medical laboratory technology

Country/Territory of origin: Italy

Peer-review report's scientific quality classification

Grade A (Excellent): 0
Grade B (Very good): B
Grade C (Good): C
Grade D (Fair): 0
Grade E (Poor): 0

Received: February 15, 2021

Peer-review started: February 15, 2021

First decision: March 31, 2021

Revised: April 15, 2021

Accepted: July 12, 2021

Article in press: July 12, 2021

Published online: July 18, 2021

P-Reviewer: Hung YJ, Zhong Y

S-Editor: Wang JL

L-Editor: A

P-Editor: Xing YX



diagnosis, therapy, and prevention.

Key Words: Motion capture; Gait analysis; Inertial measurement unit; Wearable devices; Rasterstereography; Posture

©The Author(s) 2021. Published by Baishideng Publishing Group Inc. All rights reserved.

Core Tip: Movement, gait, and posture analysis are increasingly crucial in the clinical setting and everyday life. Researchers have different tools at their disposal, such as markerless systems or lightweight wearable devices that allow human movement to be analyzed in biomechanical laboratories and sports fields. This review aims to compare the most sophisticated analysis systems with the most current digital devices to highlight specific characteristics and suggest their applications in the fields of surgery, rehabilitation, posture, and sport.

Citation: Roggio F, Ravalli S, Maugeri G, Bianco A, Palma A, Di Rosa M, Musumeci G. Technological advancements in the analysis of human motion and posture management through digital devices. *World J Orthop* 2021; 12(7): 467-484

URL: <https://www.wjgnet.com/2218-5836/full/v12/i7/467.htm>

DOI: <https://dx.doi.org/10.5312/wjo.v12.i7.467>

INTRODUCTION

Over the last decades, human movement research has made significant progress in responding to the growing medicine and sport demand for precise and accurate methods to capture human movement[1] and refine data collection[2]. Motion and posture analyses are effective tools used in diagnosis, therapy, and prevention of musculoskeletal disorders. Notably, human motion assessment during functional activities also plays a crucial role in rehabilitative medicine and sports. Nevertheless, there is a solid need to diversify the use of each system in relation to specific contexts. In some instances, 2D biomechanical analysis can offer a quick and effective method of evaluation. Movements, such as walking or running, do not require sophisticated approaches, since they are easily analyzed in the sagittal plane. Otherwise, if the movement needs to be studied on multiple planes or forces investigation is required, it is more appropriate to use a 3D system, which requires in-depth expertise. Biomechanical researchers aim to standardize human movement parameters that can be understandable, comparable, and shareable with the entire scientific community. Quantitative analysis of human movements and posture is an effective tool used to analyze the correct movement execution, identify injury risk factors[3], help clinicians make the best decision to reduce patients' recovery time, and suggest a proper treatment plan[4].

Assessing walking speed through wearable systems could be a valuable indicator of adults' health and functional status[5,6]. For example, low physical activity levels are associated with muscle weakness, decreased mobility function, and widespread pains [7]. Fast return to play sports and exercise could trigger joint pains and musculoskeletal alterations; therefore, an accurate motion and posture analysis could help planning the right approach to resume physical activity.

Hence, technological devices can broadly be used to diagnose musculoskeletal disorders and plan a preventive strategy for returning to the sport practice. Similar advice is suggested for those who return to physical activity after surgery. Long periods of inactivity caused by surgery inevitably lead to loss of muscle mass and reduction of movements fluidity; therefore, movement analysis in the return-to-daily-activities phase can be performed to detect dysfunctions and re-educate the patients.

Although marker-based and non-invasive systems are more commonly used to evaluate pathological patients, *e.g.*, subjects with spinal cord damage, amputees, strokes and cerebral palsy, scoliosis..., instrumental biomechanics have the potential for reaching every subject, from the one who suffers from musculoskeletal pathologies to the one who reports only mild pain. Therefore, it is encouraged to use these devices to study every and unexplored aspect of movement science. This review aims to

highlight the importance of new technologies in human movement and posture analysis, suggesting how they can strengthen orthopedics, rehabilitation, health prevention, sports science and guide the clinicians towards a personalized diagnostic process and treatment plan based on the patient's characteristics.

FROM MARKER-BASED TO MARKERLESS MOTION ANALYSIS SYSTEMS

The optoelectronic stereophotogrammetric multi-camera capturing system is the gold standard for motion analysis, tracking reflective markers placed on the body[8,9]. One of the most known, the Vicon system (Vicon Motion Systems, Oxford, United Kingdom), consists of multiple infrared cameras for kinetic, kinematic, and spatiotemporal movement analysis. The markers, positioned on anatomical landmarks in correspondence with the joints involved in the analysis, allow tracking all the human motion features with high accuracy[10,11]. This system precisely evaluates each joint's movements in the space at any time, and it can define the level of functional limitation and disability resulting from the evolution of a disorder, including post-traumatic or surgical alterations. Vicon is commonly used in clinical gait analysis, amputee rehabilitation, lower limb movement studies, cerebral palsy research, motor control, and neurosciences. The company produced a platform for the life sciences community called Nexus, a powerful, all-inclusive modeling and processing tool for movement analysis. Operators can reduce the time spent processing the data by creating their workflow templates; the system automatically loads the data and produces the report in the simplest or most detailed way required. However, marker-based systems show several limitations, including long preparation times, soft tissue artifacts, or unfeasibility of specific movements due to the presence of the markers, which can hinder the correct execution of the movement[12]. These systems are expensive and require a large setting in order to place all the cameras needed for the analysis. The placement of the markers on anatomical landmarks can be challenging since it depends on the clinician's ability to locate them correctly and, therefore, human error could incur. Particularly for transverse plane movements, there is an inevitable variability in the marker positioning between different days or different clinicians' hands, reducing the measurements' reliability[13]. In the literature, several protocols can be found for locating joint centers or defining segment pose, as shown in Figure 1A; however, these different protocols produce variable results, especially for the sagittal plane, compared to the same gait cycles[13]. These drawbacks can limit the use of marker-based systems within certain areas of motion analysis. For these reasons, nowadays, markerless systems are offering new opportunities to obtain similar results.

The markerless motion analysis system presents a fast, fully automatic, and non-invasive approach that can significantly improve research and practice within sports biomechanics and rehabilitation. For instance, motion can be analyzed during normal training in a common laboratory, without the long preparation times due to the markers placement and the laborious manual work. Furthermore, it can provide a reasonable solution for a common dilemma faced in biomechanics laboratories, *i.e.*, the constant search for balance between accuracy and reproduction of motion without artifacts. Several researchers investigated the most common movements studied in biomechanics laboratories, *e.g.*, walking, jumping, and jogging, by analyzing the accuracy of markerless systems compared to marker-based techniques[14-16]. Therefore, a potential application of markerless systems in gait analysis in clinics is suggested, even though an experienced clinician should validate the results to ensure their reliability. The most popular markerless system, the Microsoft Kinect v1, is the first 3D camera whose affordable price made it accessible to almost all consumers. One of its innovations was that the sensor was suitable for gait assessment outside the laboratory, becoming a portable device[17-19]. Soon after, Microsoft launched the Kinect v2 with improved hardware and skeleton tracking system; its software, Kinect for Windows SDK 2.0, allows tracking the 3D positions and orientations of 25 joints, up to 6 users simultaneously[20]. This camera can track the skeleton through artificial intelligence (AI). Briefly, this feature allows recognizing joint centres and segment orientation, providing the ability to calculate joint kinematics and spatiotemporal aspects of the movement. The Microsoft Research team produced a specific algorithm to identify the anatomical landmarks, created by training a randomized decision forest algorithm using a subset of 100000 depth scans of a variety of movements, including running, dancing, driving, kicking[21].

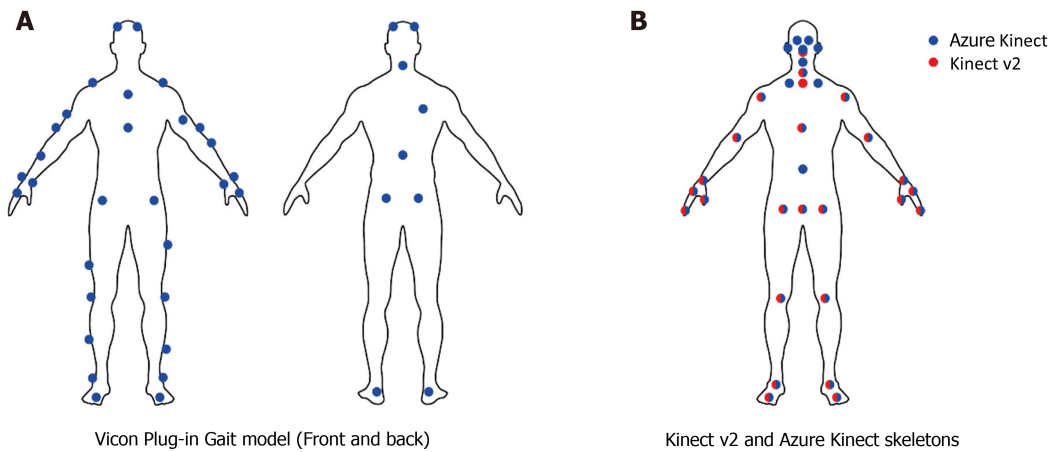


Figure 1 Markers setup for Vicon and markerless caption for Kinect cameras[28]. A: Markers setup for Vicon; B: Markerless caption for Kinect cameras.

In recent years, several studies investigated the reliability of Kinect v1 and v2 to evaluate if these devices could be used as an alternative to the multi-camera motion capturing systems. Several contexts were examined, such as walking on a treadmill or performing physical exercises at a static location[22]. Wang *et al*[23] examined the differences in human pose assessment between Kinect v1 and Kinect v2 in relation to twelve different rehabilitation exercises. The authors reported that Kinect v2 has overall better accuracy in joint estimation and body rotation detection than Kinect v1. Capecchi *et al*[24] investigated the accuracy of Kinect v2, in terms of joint positions and angles, during dynamic postures used in low back pain rehabilitation, reporting that this system can measure timing characteristic of physical exercises and reproduce dynamic features similar to a stereophotogrammetric system[25,26]. Microsoft ended the production of the Kinect v2[27] in favor of new technology, the Azure Kinect DK. The latter offers significantly higher accuracy than other commercially available cameras[28]. Unlike the Kinect v2, the Azure Kinect employs a Body Tracking SDK to track multiple users up to 32 joints, as shown in Figure 1B; it includes more joints, *i.e.*, anatomical landmarks, in the face area, such as ears and eyes. Albert *et al*[28] collected data from Microsoft Kinect v2 and Azure Kinect in gait analysis and compared them to the Vicon system. The results showed high accuracy of both cameras, Microsoft Kinect v2 and Azure Kinect, but the latter showed better accuracy for spatial gait parameters. Figure 2 shows spatial agreement of Microsoft Kinect and Azure Kinect cameras with respect to the Vicon system. Walker View (TecnoBody®-Dalmine, Italy) is a treadmill whose base includes eight load cells that allow the system to detect the user's spatiotemporal parameters. The presence of a Microsoft Kinect 2 camera automatically identifies anatomical landmarks using AI. The system is connected to a 49" LCD Monitor for the biofeedback and the virtual reality. Its advantage is the fully automatic and non-invasive approach, which is also an improvement in sport and rehabilitation research and practice. During the testing phase the patient/athlete can auto select the preferred walking speed or choose the Speed Control feature that adapts the treadmill speed to user's step velocity. In addition to the gait analysis, the Walker View can also perform run analysis, an especially useful evaluation for athletes. Regarding the training area, the patient can perform the Gait Trainer program where the software, through visive and acoustic feedback, helps him to improve his walking. Furthermore, the Walker View, thanks to the Smart Gravity system, can be used for patients with severe walking deficits unable to stand on their own. This system consists of a mechanical support to which a sling worn by the patient is connected. It can simulate a walk in the pool by selecting the appropriate weight reduction as if it were hydrokinestherapy.

Miniaturized inertial measurement units (IMUs) are a new generation of light-weight, small, and inexpensive systems embedding 3D accelerometers, gyroscopes, and magnetometers, which may offer other opportunities for the biomechanical assessment of motor functions. IMUs can track the trajectory of anatomical segments in real-time and estimate the kinematic parameters of the gait cycle[29]. Although evaluation protocols are not homogeneous, several studies estimated the possibility of assessing the gait analysis through IMUs[30-34], as reported in Table 1. Fusca *et al*[35] recruited ten volunteers on which they placed markers for motion capture using Elite

Table 1 Studies investigating the reliability of inertial measurement unit sensors

Ref.	Sensor/position	Comparison system	Results	Outcomes
Qiu <i>et al</i> [29], 2016	3 magnetic angular rate and gravity/thigh, shank, and foot	Vicon	Position accuracy of 0.3%, the ΔXY radial distance error of 0.82% and the distance error of 0.27%, position error of 0.4%	The combination of distributed wearable sensors with the Denavit-Hartenberg convention resulted in a promising tool for tracking lower limb movements
Sprager <i>et al</i> [30], 2015	1 multi-sensor platform integrated into a smart garment/knee	NP	Good activity discrimination can be achieved based RMSE and SD from flexible sensor, acceleration and gyroscope data	Preliminary results show that walking, running, stairs climbing can be discriminated based on the data collected
Cresswell <i>et al</i> [33], 2017	4 Shimmer3 sensor nodes/all sides of the shank	NP	The results of the fixed effects models highlighted the discrepancies between front-back mounting versus inner-outer mounting	For y-axis gyroscope data, the variation is mostly influenced by mounting location. Mounting location should not vary but if it has to vary, it is better for it to vary between inner and outer leg mounting locations
Fusca <i>et al</i> [35], 2018	1 IMU/posterior CoM	Elite (BTS)	Mean absolute percentage error of: Stride time is 5.7%; Cadence is 4.9%; Step's length is 5.6%; Step's speed is 13.5%	The use of IMU at CoM presents a good reliability for carrying out ambulatory, long-term, and ecologic kinematic of gait analysis
Saggio <i>et al</i> [36], 2020	7 IMU/pelvis, thighs, shanks and feet	Vicon	Joints ROMs RMSE and ICC PCC > 0.75, Reliability all the ICC > 0.975	IMUs sensors showed a high reliability on joints' movement and walking test

IMU: Inertial measurement unit; ICC: Intra-class correlation coefficients; RMSE: Root mean square error.

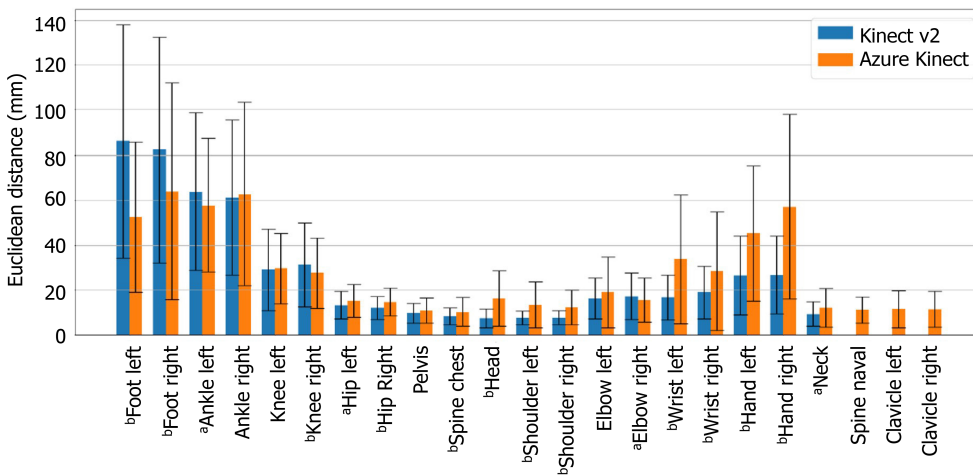


Figure 2 Spatial agreement of Microsoft Kinect and Azure Kinect cameras with respect to the Vicon system. Errors are represented as means ± SD of the 3D Euclidean distances between according joints. ^a*P* < 0.05, ^b*P* < 0.01[28].

(BTS) System, and IMU sensor placed anteriorly and close to the body's center of mass. The authors stated that it is preferable to place the IMU sensor posteriorly between the superior anterior iliac spines since abdominal breathing could lead to artifacts. Four walking trials were simultaneously recorded at a self-selected speed by blindly comparing the two systems. The stride time and the cadence had a mean absolute percentage error of 5.7% and 4.9%, respectively, for IMU. The mean absolute percentage errors were 5.6% and 13.5% in the step length and step speed measurement, respectively. Therefore, results confirmed that the IMU is effective for a reliable assessment of human gait spatiotemporal parameters. The Italian Company Captiks Srl developed a novel inertial-sensor based system, Movit System[36], which allows measuring gait parameters by positioning the IMUs through elastic bands on the pelvis (between iliac crests), thighs, shanks, and feet, as shown in Figure 3. The company compared the results obtained from Movit System and Vicon optoelectronic system. According to the statistical analysis of the data on joint ROM reported by Cuesta-Vargas *et al*[37] and Poitras *et al*[38], the authors agreed on the excellent accuracy and test-retest reliability of IMUs on joint movement and walking tests. IMUs can encounter some drawbacks: these devices are placed on the human body through

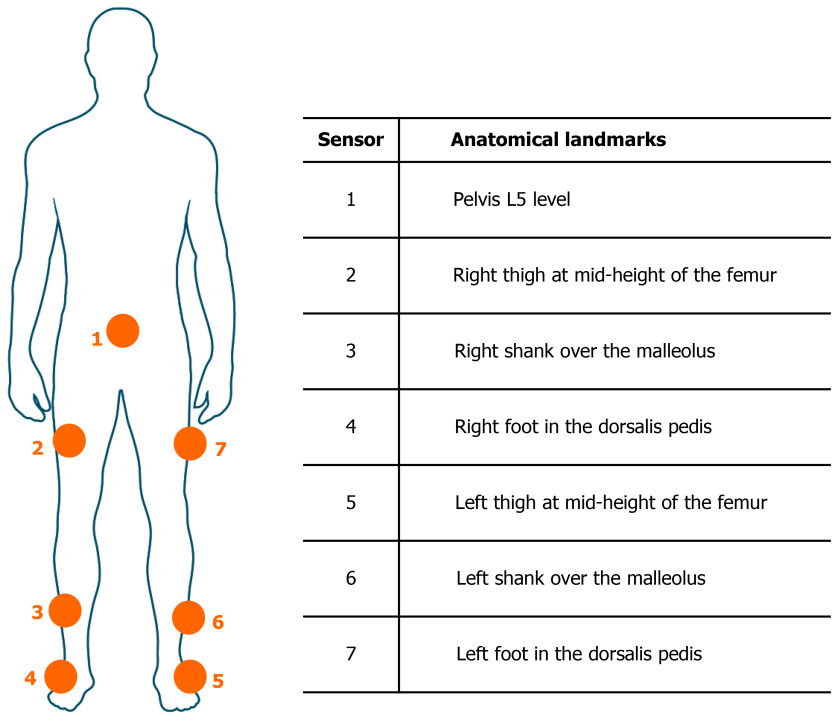


Figure 3 Body position of the seven inertial measurement units of Movit System.

elastic bands, but unpredictable vibration artifacts can occur if the wearables are not firmly and adequately fixed. This represents an important issue since the artifacts are in the signal's frequency band, so not removable by filtering. Besides, misplacement of the sensors and movements that could cause the sensors to slip can lead to wrong measurements and make the analysis inconclusive[35]. The main differences between the mentioned motion analysis systems can be found in Table 2.

Considering that three-dimensional motion capture systems are rather expensive, different low-cost methods have been developed during recent years. For instance, Kinovea is a free 2D motion analysis software for computers that can measure kinematic parameters. This software allows analyzing video without markers, although its reliability may improve with marker positioning[39]. Several studies tested Kinovea software[40-43] in different environments with good results: Damsted *et al*[39] investigated its ability to detect hip and knee joint positions in the initial contact phase during running; Elwardany *et al*[44] analyzed the range of movement of the cervical spine in the sagittal plane while Mathew *et al*[45] used this software to study the ankle, knee, and hip joints at different gait cycle phases. Kinovea only needs a camera and eventually some markers, although it requires an experienced clinician to use it. Once the movement is recorded, the clinician, in post-production, places the virtual anatomical landmarks over the joint centers or the markers physically positioned on the user. Unlike Microsoft Kinect, Kinovea does not have the appropriate software for the skeleton tracking system, so accurate marker placement or precise location of virtual anatomical landmarks is required to evaluate the movement correctly, otherwise, the results may not be valid. As a matter of fact, the main limitations uncovered by the literature concern the lack of a standard video analysis protocol and the marker placement[44,45]. The study conducted by González *et al*[42] evaluated the inter- and intra-rater reliability of Kinovea and the agreement with a three-dimensional motion system (Vicon) to detect the lower limb's joint angles during walking. The results showed significant differences in the hip, knee and ankle angles reporting a $\pm 5^\circ$ difference for the hip and ankle angles, $\pm 2.5^\circ$ for knee angles. According to McGinley *et al*[46], an error of 2° or less is considered acceptable in clinical evaluation. Errors between 2° and 5° are also reasonable, although the data should be interpreted cautiously. Errors over 5° could mislead the interpretation. To conclude, as reported by Littrell *et al*[47], the use of Kinovea could lead to high error for the pelvis and the foot during the stance period of the gait cycle. However, the software is reliable when analyzing other phases of walking and other kinematic parameters such as joint angles[48], especially for sports environments or dynamic conditions where sophisticated systems could be impossible to be used.

Table 2 Main features of motion analysis systems

Motion analysis systems	Capture system	Anatomical landmark	Recording system
Optoelectronic measurement system	Stereoscopic 3D	Passive or active markers placed	Multi-IR cameras with stroboscopic LED
Microsoft Kinect	ToF method	Markerless	1 RGB - IR Camera
IMU	9 DOF	Sensor placed with elastic band	Microprocessor processing raw data

LED: Light-emitting diode; DOF: Degree of freedom; ToF: Time of flight; IMU: Inertial measurement unit; RGB: Red, green, blue.

Recently, the use of smartphone applications (app) to measure gait parameters increased. Clinicians, researchers, and coaches can use these applications to analyze joint angles immediately. Unlike the previously mentioned systems, mobile applications are less expensive, portable, and easy to use. Although there is a lack of scientific studies investigating their reliability, the possibility of quickly measuring posture and joint angles in ordinary circumstances makes these applications compelling. Coach's Eye (TechSmith Corp) is a 2D motion analysis mobile app able to evaluate gait analysis in patients and healthy individuals[49], although it was specifically designed for coaches and trainers to assess athletic performance. The app computes joint angles and their variations by a digitized goniometer without applying any marker on the body. The videos can be recorded on frontal and sagittal planes and analyzed, frame by frame, going forward or backward. An online video database allows comparing the recorded videos with those of other athletes. However, only a few studies compared the app's data with the 3D motion analysis systems during sports tasks. Mousavi *et al*[50] investigated the validity and reliability of Coach's Eye app for selected lower-limb kinematics during treadmill running by comparing the results with those deriving from a traditional 3D motion analysis system (Vicon). The authors recruited 20 healthy female recreational runners who wore 16 reflective markers for the 3D comparison. The subjects were asked to run on a treadmill at a self-selected speed. Concerning the validity, Coach's Eye showed only 1-2 degrees of difference compared to Vicon in kinematic measurements for the sagittal plane hip angles at touchdown and toe-off, knee angle at touchdown, ankle angle at toe-off, and rearfoot angles at touchdown and toe-off. Measures of ankle angle at touchdown and knee angle at toe-off were not as accurate, reporting a bias ranging from 4 to 20 degrees. Furthermore, Coach's Eye demonstrated excellent test-retest reliability for all joint kinematic measures, in agreement with Krause *et al*[51] who reported high reliability of the application during the squat execution.

The authors recommended the use of Coach's Eye to record and assess sagittal plane lower-limb joint kinematics and rearfoot in/eversion at touchdown, hip, ankle, and rearfoot eversion at toe-off, but not for hip and ankle at touchdown or knee at toe-off. Nevertheless, given its ease of use and low cost, it would represent a manageable tool for sports coaches who frequently evaluate athletes.

Electromagnetic motion acquisition systems consist of a series of receivers that measure their position in space and transmit it to a nearby receiver. They are based on the electromagnetism principle: the emission source produces an electromagnetic field, and the sensors send the signal *via* cable to the processing unit, then the computerized system calculates sensors' position and direction in space based on these signals. For example, Polhemus and Ascension are two of the most popular companies producing electromagnetic motion systems[52,53]. This system finds application in analyzing a single fine movement, such as taking an object with the hand, which has high accuracy and a low margin of error compared to camera-based systems[54]. However, complex movement analysis, such as walking, could be challenging. For this reason, the application is less suitable for clinical and sports movement analysis, such as gait analysis or technical sports gestures. Conversely, the entertainment industry exploits its high accuracy to reproduce the movement executed by a performer over a digital character[55]. Recently, Polhemus enabled localization of medical instruments through the trackers, especially for image-guided therapy[56]. The application of electromagnetic systems can be notably valid to enhance the medical students' skills, such as the use of endoscope and surgical instruments, tissue manipulation, use of precision tools, and other procedural skills before operating on patients.

In summary, the optoelectronic system is undoubtedly the gold standard for motion analysis, although modern markerless options might overcome some disadvantages and offer a valid alternative for outdoor examination. The strength of markerless systems relies on testing more users in shorter times and less equipment than the

marker-based system. The markerless approach is more suitable for sport and rehabilitation purposes rather than diagnostics. Another way to capture human motion is by IMUs, lightweight devices easy and comfortable to be used almost everywhere. Finally, software or mobile application is applied, especially in athletic contexts where sophisticated tools collide with sport practice.

GAIT ANALYSIS IN PREVENTION AND HEALTH PROMOTION

Gait analysis is recognized as a useful assessment tool in the field of human movement research, commonly used in biomechanical laboratories to assess walking ability in patients with specific motor disabilities[57-60], often due to conditions as severe developmental motor impairments[61], spinal cord damage[62], amputees[63], orthopedic surgery[64], strokes[65] and cerebral palsy[66]. Specifically, clinical gait analysis can be classified into two levels of examination: a first level which deals with the clinical evaluation of the lower limb impairments by collecting data from spatiotemporal parameters, kinematics, and kinetics of locomotion; a second level which involves the use of dynamic electromyography, during gait, to evaluate the neuromuscular activity[67]. For the purely medical use, the SIAMOC (Italian Society of Clinical Movement Analysis) proposes these guidelines: (1) in cerebral palsy, the use of gait analysis, combined with an expert clinical evaluation, can influence the planning of functional surgery; (2) in adult brain injuries, the use of gait analysis can influence the orthopaedic surgery, neuromuscular blocks or rehabilitation programs; and (3) in patients wearing lower limb prostheses, gait analysis might be useful for choices regarding the construction of the prosthesis and the planning of general models of rehabilitation[68]. Information deriving from this evaluation allows to increase diagnostic accuracy, differentiate diagnosis and severity, and help in decision-making about the treatments. Evidence demonstrates the efficacy of 3D gait analysis in defining gait problems, their causes, and the appropriate treatments (*e.g.*, surgery against non-surgical treatment or type of surgery). However, gait analysis continues to be a helpful tool partially exploited. The literature is not yet robust regarding using this system even outside clinical contexts. Therefore, human motion analysis is limited to clinical examination, *i.e.*, orthopaedic, neurological, or surgical, not considering the possibilities deriving from daily life evaluation. Prevention and health promotion science could exploit gait analysis to avoid that a simple dysfunction develops into an actual disease. What would happen if orthopaedic patients performed gait analysis as a routine examination rather than in sight of surgery? For instance, according to Meireles *et al*[69], the early stages of knee osteoarthritis are challenging to detect, but it is known that biomechanical factors may contribute to its onset[70-73]. This study calculated knee contact forces and their relations with external knee adduction and flexion moments and reported that mechanical loading was not significantly higher in early osteoarthritis subjects. These results highlight the possibility that other causes (*e.g.*, spatiotemporal parameters, hip or ankle kinematics) might occur to develop osteoarthritis and therefore, gait analysis might be considered in disease management since current treatments offer limited benefits[74]. Several contexts can benefit from an accurate gait analysis guiding clinicians towards the best decision based on patients' needs. Pathologies involving walking abnormalities that afflict the central nervous systems are highly variable, and several different motor patterns can be altered. In cerebral palsy subjects, gait analysis investigated the common altered gait patterns, including jump knee gait, toe-toe gait, crouch knee gait, stiff knee gait, and rotational abnormalities. However, each subject presents a unique combination of impairment and compensatory movements so, gait analysis can help clinicians recognizing the primary deformities and how they affect the musculoskeletal[75]. While the use of this approach in cerebral palsy has been widely investigated, there is less evidence in other neurological conditions. Gait analysis among spinal cord-damaged populations can help establish individualized interventions to enhance walking, improving muscle strength, coordination, proprioception, and postural control. Specifically, Murphy *et al* [62] highlighted how gait analysis could provide specific information to clinicians to deal with spasticity management, *i.e.*, botulinum toxin-a injection; best orthotic selection, *i.e.*, hinged or rigid; surgery, *i.e.*, joint fusion; or establish the well-suited rehabilitation program[76]. In orthopedic contexts, gait analysis can enhance understanding the subject's functional capacity reduction before surgery and, in the same way, indicate the elements that need to be improved following the surgery[77]. The fear of moving after surgery is often present in patients[78]; digital support, in this case, can help the patient understanding that within a specific range of movement,

e.g., walking for 500 m or walking at speed 2 km/h, will not suffer further pain and will not negatively affect recovery.

The use of gait analysis in the early stages of many pathologies could suggest re-educational intervention to reduce surgery later. Therefore, patients should be first examined through markerless systems and proceed to in-depth marker-based analysis when necessary, as reported in [Figure 4](#), with improved time and cost-efficiency.

COMPUTERIZED ANALYSIS OF THE SPINE

Rasterstereography is a non-invasive method used to measure 3D spine deformities by analyzing the back's surface topography on triangulation principles[79,80]. It was developed by Drerup and Hierholzer[81-83] in the 1980s as a valid alternative to radiography, and over the years, it has shown its high reliability in various studies[84-86], [Table 3](#) shows the main differences among these studies. The system generates a 3D model of the spine by calculating specific deformities thanks to the precise convex shape of the spinous process of the vertebra prominence and the concavity of the lumbar dimples as fixed points. The rasterstereography is commonly used to assess the presence of scoliosis, but it can efficiently evaluate other parameters as pelvic obliquity, thoracic kyphosis and lumbar lordosis angles[87,88]. Since this system is a non-invasive method, it can perform several analysis repeated over time with high reliability, which can minimize the use of X-rays[79]. Krott *et al*[89] provided a meta-analysis of 19 eligible studies evaluating the reliability and validity of static rasterstereographic measurements in healthy subjects and patients with different spinal pathologies. The authors compared the results with the gold standard of radiological imaging techniques, reporting high validity levels in assessing patients' thoracic kyphosis angle, lumbar lordosis angle, and scoliosis angle. The easiest accessibility of rasterstereography can spread through evaluating common health problems among children, adolescents[90], and adults, such as non-specific back pain and postural insufficiencies[91-94]. Several studies proved the validity and reliability during static upright standing in children and healthy adults, while recently, it was investigated the use of rasterstereography from static to a dynamic system. Michalik *et al*[86] evaluated the spinal posture and pelvic position under dynamic conditions, *i.e.*, walking, and compared it to static measurements of the spine using a dynamic rasterstereographic system. Significant differences were found between static and dynamic conditions about the trunk inclination ($P < 0.001$), kyphotic angle at 2 km/h ($P = 0.003$), lordotic angles ($P < 0.001$) and lordotic angles with increasing walking velocities ($P < 0.001$). No differences were found between static and dynamic measurements for the surface rotation. März *et al*[95] used rasterstereography to determine the instantaneous influence of different occlusal positions on spine and body posture. After comparing ten spinal and body posture parameters (*i.e.*, trunk inclination, pelvic tilt, kyphotic and lordotic angles), in six different occlusal positions, only three parameters were found to differ. The authors concluded that a plausible explanation could be represented by neuromuscular compensation for body balance and posture on trigeminal proprioception[96]. For instance, postural alterations provoked by changes in dental occlusion and masticatory muscle function suggest a neurophysiological link between the stomatognathic system and other body muscles[97,98]. The rasterstereography field of application involves: screening programs, *e.g.*, early diagnosis and monitoring of scoliotic and scoliosis attitudes, lumbar hyperlordosis, dorsal hyperkyphosis, and all pathological conditions of the back; postural evaluation and musculoskeletal problems; design and verification of ergonomic and orthopaedic devices (ergonomic insoles, bites, prostheses, orthoses); support to therapeutic programs and postural re-education. Formetric (DIERS Medical Systems, Chicago, IL, United States) is a rasterstereographic technology for analyzing the spine and posture that does not present any contraindications or side effects. It emits parallel lines of light across the posterior trunk surface and, based on the distortion of those lines, reconstructs a digital image of the back's surface and produces a digital model of the spine. The optical scan detects the anatomical landmarks (C7 or prominent cervical vertebra, sacrum, lumbar dimples), the symmetry of the spine and the rotation of each segment. Three different versions are currently available on the market: Formetric Basic, Formetric Basic 4D, and Formetric Basic 4D Motion. Formetric Basic produces a 3D analysis of the spine and posture, but it does not allow to perform a dynamic analysis. Formetric 4D can acquire image sequences, automatically processing average values, with a duration of the detection sequences even greater than 1 minute and the possibility to acquire up to 10 images per second. The newest version of this system is

Table 3 Studies investigating the reliability of rasterstereography to evaluate the spine

Ref.	Aim	Coort	Results	Conclusion
Mohokum <i>et al</i> [84], 2010	To determine reproducibility of rasterstereography for kyphotic and lordotic angles, trunk length, and trunk inclination	51 healthy volunteers	Cronbach- α for the intratester-reliability of the kyphotic angle ICT-ITL (max.) between 0.921 and 0.992. The intertester-reliability for the same parameter is 0.979 (95%CI)	The reliability revealed good results, both for intratester and for intertester reliability of rasterstereography in kyphotic and lordotic parameters trunk length and trunk inclination
Guidetti <i>et al</i> [85], 2013	To determine intra- and interday reliability of spine rasterstereographic system Formetric 4D with and without reflective markers.	26 healthy volunteers with markers (M), 26 healthy volunteers without markers (NM)	In M group, for intra- and interday reliability coefficients were 0.971, 0.963, and 0.958 (ICC) and 0.987, 0.983, and 0.985 (C α) for trunk length, kyphotic angle, and lordotic apex, respectively. In NM group, they were 0.978, 0.982, and 0.972 and 0.989, 0.991, and 0.991 for trunk length	The presence of the markers is not necessary for the intraday evaluations and can play a disturbing role for the interday evaluations, because of the repositioning process
Michalik <i>et al</i> [86], 2020	To study the spinal and pelvic position under dynamic conditions and compare it to static measurements using a rasterstereographic system.	121 healthy volunteers (56 females; 65 males)	Trunk inclination (5.31° vs 6.74°), vertebral kyphotic angle (42.53° vs 39.59°), and surface rotation (3.35° vs 3.81°) increase under dynamic conditions ($P < 0.001$). Trunk shows significant changes during walking compared to static conditions ($P < 0.001$)	The spinal posture differs between females and males during standing and during walking. Rasterstereography is a valuable tool for the dynamic evaluation of spinal posture and pelvic position
Albertsen <i>et al</i> [91], 2018	To investigate whether the clinical Matthiass test can be objectified by means ofdynamic rasterstereography in children.	101 healthy children	Cluster analysis identified two groups with different postural performance levels during the modified Matthiass Test. Low performers showed a higher increase in backward lean, kyphosis and lordosis (4°-5°, respectively) compared to high performers	Modified Matthiass Test applied with Rasterstereography can discriminate between low and high posture profile among children

the Formetric 4D Motion, which can accomplish a dynamic analysis of the whole body and the skeletal system during a step execution or treadmill walking, due to the possibility to acquire up to 24 images per second. The high sampling rate allows excluding effects due to spontaneous postural oscillations or breathing. Once the exam has been performed, the system produces a report about physiological alterations of the spine both in the frontal and in the sagittal plane, degrees of vertebral rotation, pelvic tilt and antero-retroversion.

MOBILE APPLICATION AND WEARABLE DEVICES FOR POSTURE MANAGEMENT

PostureScreen Mobile (PSM) (Trinity, FL, United States) is an app that guides clinicians in rapidly identifying anatomical landmarks and posture assessment. Without the use of reflective markers, the app calculates posture variables using digitized anatomical landmarks. The device camera is used within the app to take pictures of subjects from frontal and sagittal planes. Once the picture is taken, the clinician place digital anatomical landmarks on the picture to produce an evaluation of the misalignment of the landmarks on the coronal and sagittal planes, as reported in **Figure 5**. Therefore, the app provides a file report that indicates possible posture misalignments. In the frontal plane, it analyzes head, shoulders, hips tilt, and horizontal translation; in the sagittal plane, it analyzes the shift forward or rearward of the head, shoulders, hips and knees. Szucs *et al*[99] tested the app in healthy young adults. Based on the results, the PSM app has been a reliable method for assessing posture within and across raters when using defined procedures and markers. For intra-rater reliability, most posture variables showed good to excellent reliability (> 0.75). Angulation variables showed moderate to good reliability range (0.50-0.75). In contrast with the previous study, Hopkins *et al*[100] analyzed the intraclass correlation coefficient of postural analysis between PSM app and Vicon 3D analysis. The results showed a significant bias in postural measurements in the frontal and sagittal with the PSM app, while the intraclass correlations were similar in most of the measurements between the two systems. These data suggest caution using the PSM app when highly accurate postural assessments are necessary. Instead, innovative use of this technology is proposed by Jacob *et al*[101], which tested the PSM app to evaluate dental occlusion anomalies. Both static and dynamic occlusion were evaluated. In the first part of the study, the subjects were divided according to normal or abnormal occlusion; statist-

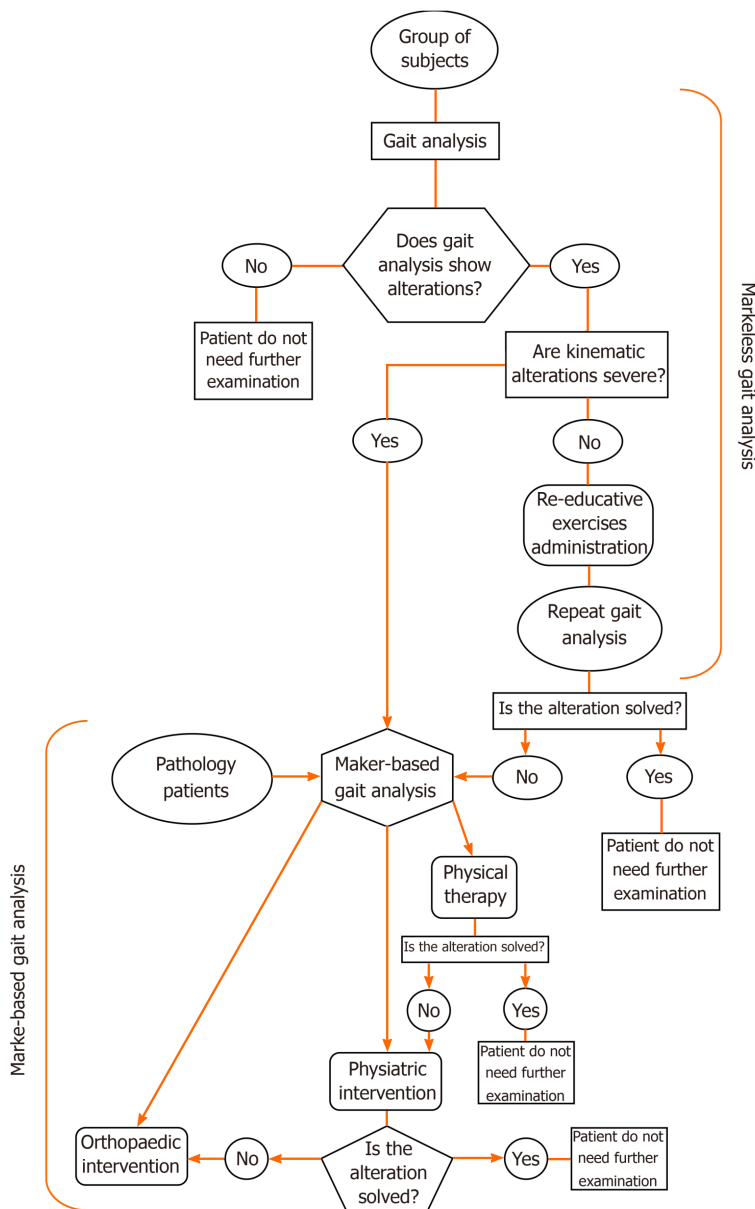


Figure 4 Flow chart of the gait analysis approach levels. A guide explaining when it is enough a markerless gait analysis and when it is needed a marker based gait analysis.

ically significant differences ($P < 0.05$) were obtained for only the head deviation angle. In the second part of the study, after examining the dental occlusion in each type of movement, subjects were grouped according to the presence or absence of premature contacts or interferences. Statistically significant differences regarding head deviation angle between the groups normal/abnormal occlusion were found, confirming a possible correlation between static occlusion and posture. Therefore, the PSM app is suggested to assess the impact of pathological dental conditions on posture. Furthermore, depending on the degree of postural deterioration, the clinician can direct the patient toward correction therapy before the postural abnormalities become definitive and harm the musculoskeletal system[101].

Among innovative technologies, the growing reliability of wearable devices is noteworthy. Wearable devices have been welcomed into the daily lives of healthy individuals, older adults, and those with chronic illnesses[102,103]. These devices represent an opportunity to quantify the movement patterns of all types of individuals in real-world settings. It is expected that the applicability of wearable devices to different populations will contribute to relevant advancements in understanding the daily gait patterns of walkers and runners[104]. The use of wearables is constantly expanding, especially in the field of gait analysis[105], post-operative rehabilitation [106,107], diagnosis and treatment of musculoskeletal disorders (e.g., scoliosis,

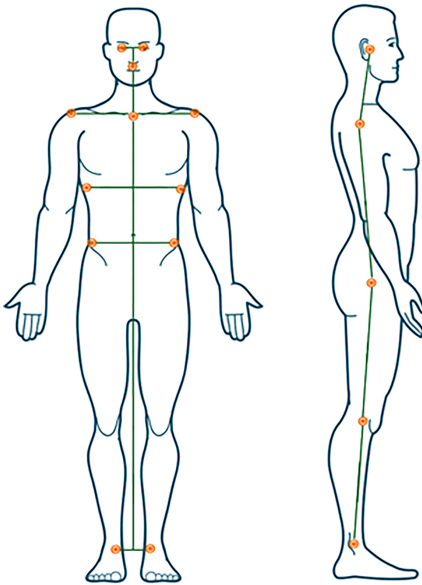


Figure 5 Body position of the digital landmarks of PostureScreen Mobile app. Frontal and side view.

kyphosis, lordosis)[108,109], and posture management in the workplace[110]. In the context of posture analysis, wearables offer a low-cost and easy-to-use tool that provides real-time feedback for correcting workers' posture and reducing postural pain onset. Poor posture can lead to musculoskeletal disorders or spinal complications. It is well established that long sitting hours in front of computers cause pain, usually at the back. Abyarjoo *et al*[111] proposed a wearable system for office workers that alarms the subject when he assumes a wrong posture. The Upright Go 2, following the success of its previous release (Upright Go), is a wearable device whose goal is to manage posture daily by promoting self-correction[112]. The device is about 48mm large, lightweight, and with a battery that lasts up to 35 h. It can be applied to the back using hypoallergenic adhesives or worn with a unique necklace that ensures that the device stays on the back. It is equipped with multiple sensors that perceived if the subject slouches, and in this case, it will emit vibrations that stimulate the subject to regain a correct posture. The Upright Go 2 provides an app to monitor the progress over time, suggesting workouts to maintain the correct posture. Future studies about whether the subject would maintain a correct posture even after the device is no longer used would be an interesting prospect.

OVERALL CONSIDERATIONS

In recent years, a wide variety of technologies to study human movement has emerged, ranging from 3D visual software to wearable devices with almost imperceptible weight. The increase of technological devices has made it possible to expand the field of biomechanical assessment not only to the clinical environment but also to re-educational, sports and everyday life contexts. However, rapid technological development risks providing tools that are often not sufficiently validated. For example, the study conducted by Yoong *et al*[113], published just in November 2019, reports wearables that are no longer in production. For a device to be considered valid in the scientific field, it must comply with some strict parameters, and above all, it must maintain the reliability of its measurements constant. The evaluation of posture, movement, and gait and their deviations from physiological conditions are increasingly helpful in the clinical setting to diagnose musculoskeletal pathologies and in daily life to reduce the incidence of pain and disorders. As reported in Figure 4, this approach involves subdivisions based on the patient's criticality levels. Concerning gait analysis, a markerless system is a valuable tool for first-level screening as fully automatic and non-invasive, allowing to quickly analyze a large number of patients without stressing them with lengthy procedures. This first step streamlines the use of a marker-based system, making it available to more complex cases.

Table 4 Application outline of each mentioned system

		Vicon	Microsoft Kinect	IMU	Electromagnetic	Rasterstereography	Kinovea	PostureScreen	Coach's Eye
Field of application	Clinical	High	Medium	Low	Medium	High	Low	NA	NA
	Sport	High	High	Medium	Low	NA	High	NA	Medium
	Posture	High	High	Low	Medium	High	High	Medium	Low
	Surgery	High	NA	NA	NA	Medium	NA	NA	NA
System potential	Accuracy	High	High	Medium	High	Medium	Medium	Medium/Low	Medium/Low
	Reliability	High	High/Medium	Medium	High	High	Medium	Medium/Low	Medium/Low
	Validity	High	High/Medium	Medium	Medium	High	Medium	Low	Low
	Reproducibility	Low	High	Low	Medium	High	Medium	Low	Low
Other characteristics	Outdoor	NA	Available	Available	NA	NA	Available	Available	Available
	Markers/Sensors	Required	NR	Required	Required	NR	NR	NR	NR
	Time required	High	Low	Medium	Medium	Low	Low	Low	Low
	Cost	High	Medium	Low	High	Medium	Low	Low	Low

NA: Not available; NR: Not required.

Similarly, the rasterstereography system, intended as a first-level approach, allows analyzing the back's topography leaving the second-level approach to radiographs, minimizing the need for repeat X-rays. In clinical practice, these approaches help in planning treatment, personalized rehabilitation programs, and surgical solutions. In everyday life, they give the possibility to remotely follow the patients, monitor progresses, and collect data on a large scale of users. As reported in Table 4, different systems serve different purposes, suggesting the need for a general scheme to direct the operator towards the most suitable analysis system to prefer.

CONCLUSION

This review highlighted the main applications of novel electronic devices in motion and posture analysis, describing their strengths and weaknesses. From the comparison of these systems, it is clear that some of the mentioned devices have the potential to be used in clinical practice, sports, and healthcare prevention. Therefore, it is suggested that the scientific community might embrace an improved biomechanical approach through these new currently available tools for a tailored evaluation of patient's characteristics. The future of biomechanical research is a fast, fully automatic, non-invasive, and repeatable approach further away from human-dependent errors.

REFERENCES

- 1 **Cimolin V**, Galli M. Summary measures for clinical gait analysis: a literature review. *Gait Posture* 2014; **39**: 1005-1010 [PMID: 24613461 DOI: 10.1016/j.gaitpost.2014.02.001]
- 2 **Wren TAL**, Tucker CA, Rethlefsen SA, Gorton GE 3rd, Öunpuu S. Clinical efficacy of instrumented gait analysis: Systematic review 2020 update. *Gait Posture* 2020; **80**: 274-279 [PMID: 32563727 DOI: 10.1016/j.gaitpost.2020.05.031]
- 3 **Ford KR**, Myer GD, Toms HE, Hewett TE. Gender differences in the kinematics of unanticipated cutting in young athletes. *Med Sci Sports Exerc* 2005; **37**: 124-129 [PMID: 15632678]
- 4 **Sjödahl C**, Jarnlo GB, Söderberg B, Persson BM. Kinematic and kinetic gait analysis in the sagittal plane of trans-femoral amputees before and after special gait re-education. *Prosthet Orthot Int* 2002; **26**: 101-112 [PMID: 12227444 DOI: 10.1080/03093640208726632]
- 5 **Jarvis LM**, Peterson MJ, Caves KM. Development, Validity, and Reliability of a Novel Walking Speed Measurement Device: the GaitBox. *Gait Posture* 2021; **84**: 52-57 [PMID: 33271417 DOI: 10.1016/j.gaitpost.2020.11.009]
- 6 **Graham JE**, Ostir GV, Fisher SR, Ottenbacher KJ. Assessing walking speed in clinical research: a

- systematic review. *J Eval Clin Pract* 2008; **14**: 552-562 [PMID: 18462283 DOI: 10.1111/j.1365-2753.2007.00917.x]
- 7 **Kato S**, Demura S, Shimura K, Yokogawa N, Kabata T, Matsubara H, Kajino Y, Igarashi K, Inoue D, Kurokawa Y, Oku N, Tsuchiya H. Association of low back pain with muscle weakness, decreased mobility function, and malnutrition in older women: A cross-sectional study. *PLoS One* 2021; **16**: e0245879 [PMID: 33493191 DOI: 10.1371/journal.pone.0245879]
 - 8 **Cai L**, Ma Y, Xiong S, Zhang Y. Validity and Reliability of Upper Limb Functional Assessment Using the Microsoft Kinect V2 Sensor. *Appl Bionics Biomech* 2019; **2019**: 7175240 [PMID: 30886646 DOI: 10.1155/2019/7175240]
 - 9 **Ma M**, Proffitt R, Skubic M. Validation of a Kinect V2 based rehabilitation game. *PLoS One* 2018; **13**: e0202338 [PMID: 30142631 DOI: 10.1371/journal.pone.0202338]
 - 10 **Barker S**, Craik R, Freedman W, Herrmann N, Hillstrom H. Accuracy, reliability, and validity of a spatiotemporal gait analysis system. *Med Eng Phys* 2006; **28**: 460-467 [PMID: 16122966 DOI: 10.1016/j.medengphy.2005.07.017]
 - 11 **Merriaux P**, Dupuis Y, Boutteau R, Vasseur P, Savatier X. A Study of Vicon System Positioning Performance. *Sensors (Basel)* 2017; **17** [PMID: 28686213 DOI: 10.3390/s17071591]
 - 12 **Della Croce U**, Leardini A, Chiari L, Cappozzo A. Human movement analysis using stereophotogrammetry. Part 4: assessment of anatomical landmark misplacement and its effects on joint kinematics. *Gait Posture* 2005; **21**: 226-237 [PMID: 15639401 DOI: 10.1016/j.gaitpost.2004.05.003]
 - 13 **Ferrari A**, Benedetti MG, Pavan E, Frigo C, Bettinelli D, Rabuffetti M, Crenna P, Leardini A. Quantitative comparison of five current protocols in gait analysis. *Gait Posture* 2008; **28**: 207-216 [PMID: 18206374 DOI: 10.1016/j.gaitpost.2007.11.009]
 - 14 **Corazza S**, Mündermann L, Gambaretto E, Ferrigno G, Andriacchi TP. Markerless Motion Capture through Visual Hull, Articulated ICP and Subject Specific Model Generation. *Int J Comput Vis* 2009; **1**: 156 [DOI: 10.1007/s11263-009-0284-3]
 - 15 **Ceseracciu E**, Sawacha Z, Cobelli C. Comparison of markerless and marker-based motion capture technologies through simultaneous data collection during gait: proof of concept. *PLoS One* 2014; **9**: e87640 [PMID: 24595273 DOI: 10.1371/journal.pone.0087640]
 - 16 **Sandau M**, Koblauch H, Moeslund TB, Aanaes H, Alkjær T, Simonsen EB. Markerless motion capture can provide reliable 3D gait kinematics in the sagittal and frontal plane. *Med Eng Phys* 2014; **36**: 1168-1175 [PMID: 25085672 DOI: 10.1016/j.medengphy.2014.07.007]
 - 17 **Clark RA**, Paterson K, Ritchie C, Blundell S, Bryant AL. Design and validation of a portable, inexpensive and multi-beam timing light system using the Nintendo Wii hand controllers. *J Sci Med Sport* 2011; **14**: 177-182 [PMID: 21247802 DOI: 10.1016/j.jsams.2010.12.001]
 - 18 **Clark RA**, Pua YH, Bower KJ, Bechard L, Hough E, Charlton PC, Mentiplay B. Validity of a low-cost laser with freely available software for improving measurement of walking and running speed. *J Sci Med Sport* 2019; **22**: 212-216 [PMID: 30029889 DOI: 10.1016/j.jsams.2018.07.005]
 - 19 **Horaud R**, Hansard M, Evangelidis G, Ménier C. An overview of depth cameras and range scanners based on time-of-flight technologies. *Mach Vis Appl* 2016; **7**: 1005 [DOI: 10.1007/s00138-016-0784-4]
 - 20 **Chen C**, Jafari R, Kehtarnavaz N. Fusion of depth, skeleton, and inertial data for human action recognition. In: 2016 IEEE International Conference on Acoustics, Speech and Signal Processing (ICASSP); 2016 Mar 20-25; Shanghai, China. IEEE, 2016: 2712-2716 [DOI: 10.1109/ICASSP.2016.7472170]
 - 21 **Shotton J**, Fitzgibbon A, Cook M, Sharp T, Finocchio M, Moore R, Kipman A, Blake A. Real-time human pose recognition in parts from single depth images. In: Proceedings of the 2011 IEEE Conference on Computer Vision and Pattern Recognition: IEEE Computer Society; 2011 June 20-25; Colorado Springs, United States. IEEE, 2011: 1297-1304 [DOI: 10.1109/CVPR.2011.5995316]
 - 22 **Geerse DJ**, Coolen BH, Roerdink M. Kinematic Validation of a Multi-Kinect v2 Instrumented 10-Meter Walkway for Quantitative Gait Assessments. *PLoS One* 2015; **10**: e0139913 [PMID: 26461498 DOI: 10.1371/journal.pone.0139913]
 - 23 **Wang Q**, Kurillo G, Ofli F, Bajcsy R. Evaluation of Pose Tracking Accuracy in the First and Second Generations of Microsoft Kinect. In: 2015 International Conference on Healthcare Informatics; 2015 Oct 21-23; Dallas, United States. IEEE, 2015: 380-389 [DOI: 10.1109/ICHI.2015.54]
 - 24 **Capecchi M**, Ceravolo MG, Ferracuti F, Iarlori S, Longhi S, Romeo L, Russi SN, Verdini F. Accuracy evaluation of the Kinect v2 sensor during dynamic movements in a rehabilitation scenario. *Annu Int Conf IEEE Eng Med Biol Soc* 2016; **2016**: 5409-5412 [PMID: 28269481 DOI: 10.1109/EMBC.2016.7591950]
 - 25 **Xu X**, McGorry RW, Chou LS, Lin JH, Chang CC. Accuracy of the Microsoft Kinect for measuring gait parameters during treadmill walking. *Gait Posture* 2015; **42**: 145-151 [PMID: 26002604 DOI: 10.1016/j.gaitpost.2015.05.002]
 - 26 **Galna B**, Barry G, Jackson D, Mhiripiri D, Olivier P, Rochester L. Accuracy of the Microsoft Kinect sensor for measuring movement in people with Parkinson's disease. *Gait Posture* 2014; **39**: 1062-1068 [PMID: 24560691 DOI: 10.1016/j.gaitpost.2014.01.008]
 - 27 **Asaeda M**, Kuwahara W, Fujita N, Yamasaki T, Adachi N. Validity of motion analysis using the Kinect system to evaluate single leg stance in patients with hip disorders. *Gait Posture* 2018; **62**: 458-462 [PMID: 29665566 DOI: 10.1016/j.gaitpost.2018.04.010]

- 28 **Albert JA**, Owolabi V, Gebel A, Brahms CM, Granacher U, Arnrich B. Evaluation of the Pose Tracking Performance of the Azure Kinect and Kinect v2 for Gait Analysis in Comparison with a Gold Standard: A Pilot Study. *Sensors (Basel)* 2020; **20** [PMID: 32911651 DOI: 10.3390/s20185104]
- 29 **Qiu S**, Wang Z, Zhao H, Hu H. Using Distributed Wearable Sensors to Measure and Evaluate Human Lower Limb Motions. *IEEE Trans Instrum Meas* 2016; **65**: 939-950 [DOI: 10.1109/TIM.2015.2504078]
- 30 **Sprager S**, Juric MB. Inertial Sensor-Based Gait Recognition: A Review. *Sensors (Basel)* 2015; **15**: 22089-22127 [PMID: 26340634 DOI: 10.3390/s150922089]
- 31 **Patel S**, Park H, Bonato P, Chan L, Rodgers M. A review of wearable sensors and systems with application in rehabilitation. *J Neuroeng Rehabil* 2012; **9**: 21 [PMID: 22520559 DOI: 10.1186/1743-0003-9-21]
- 32 **Spulber I**, Papi E, Chen Y, Anastasova-Ivanova S, Bergmann J, Georgiou P, McGregor AH. Development of a wireless multi-functional body sensing platform for smart garment integration. In: 2014 IEEE Biomedical Circuits and Systems Conference (BioCAS) Proceedings; 2014 Oct 22-24; Lausanne, Switzerland. IEEE, 2014: 157-160 [DOI: 10.1109/BioCAS.2014.6981669]
- 33 **Cresswell KG**, Shin Y, Chen S. Quantifying Variation in Gait Features from Wearable Inertial Sensors Using Mixed Effects Models. *Sensors (Basel)* 2017; **17** [PMID: 28245602 DOI: 10.3390/s17030466]
- 34 **Tao W**, Liu T, Zheng R, Feng H. Gait analysis using wearable sensors. *Sensors (Basel)* 2012; **12**: 2255-2283 [PMID: 22438763 DOI: 10.3390/s120202255]
- 35 **Fusca M**, Negrini F, Perego P, Magoni L, Molteni F, Andreoni G. Validation of a Wearable IMU System for Gait Analysis: Protocol and Application to a New System. *Appl Sci* 2018; **8**: 1167 [DOI: 10.3390/app8071167]
- 36 **Saggio G**, Tombolini F, Ruggiero A. Technology-Based Complex Motor Tasks Assessment: A 6-DOF Inertial-Based System Versus a Gold-Standard Optoelectronic-Based One. *IEEE Sens J* 2021; **2**: 1616 [DOI: 10.1109/JSEN.2020.3016642]
- 37 **Cuesta-Vargas AI**, Galán-Mercant A, Williams JM. The use of inertial sensors system for human motion analysis. *Phys Ther Rev* 2010; **15**: 462-473 [PMID: 23565045 DOI: 10.1179/1743288X11Y.0000000006]
- 38 **Poitras I**, Dupuis F, Biellmann M, Campeau-Lecours A, Mercier C, Bouyer LJ, Roy JS. Validity and Reliability of Wearable Sensors for Joint Angle Estimation: A Systematic Review. *Sensors (Basel)* 2019; **19** [PMID: 30935116 DOI: 10.3390/s19071555]
- 39 **Damsted C**, Nielsen RO, Larsen LH. Reliability of video-based quantification of the knee- and hip angle at foot strike during running. *Int J Sports Phys Ther* 2015; **10**: 147-154 [PMID: 25883863]
- 40 **Bertelsen ML**, Jensen JF, Nielsen MH, Nielsen RO, Rasmussen S. Footstrike patterns among novice runners wearing a conventional, neutral running shoe. *Gait Posture* 2013; **38**: 354-356 [PMID: 23280125 DOI: 10.1016/j.gaitpost.2012.11.022]
- 41 **de Almeida MO**, Saragiotto BT, Yamato TP, Lopes AD. Is the rearfoot pattern the most frequently foot strike pattern among recreational shod distance runners? *Phys Ther Sport* 2015; **16**: 29-33 [PMID: 24894762 DOI: 10.1016/j.ptsp.2014.02.005]
- 42 **Fernández-González P**, Koutsou A, Cuesta-Gómez A, Carratalá-Tejada M, Miangolarra-Page JC, Molina-Rueda F. Reliability of Kinovea® Software and Agreement with a Three-Dimensional Motion System for Gait Analysis in Healthy Subjects. *Sensors (Basel)* 2020; **20** [PMID: 32498380 DOI: 10.3390/s20113154]
- 43 **Balsalobre-Fernández C**, Tejero-González CM, del Campo-Vecino J, Bavaresco N. The concurrent validity and reliability of a low-cost, high-speed camera-based method for measuring the flight time of vertical jumps. *J Strength Cond Res* 2014; **28**: 528-533 [PMID: 23689339 DOI: 10.1519/JSC.0b013e318299a52e]
- 44 **Elwardany S**, El-Sayed W, Ali M. Reliability of Kinovea Computer Program in Measuring Cervical Range of Motion in Sagittal Plane. *OALib* 2015; **2**: 68651 [DOI: 10.4236/oalib.1101916]
- 45 **Mathew J**, Vanlalpeki T, Nair G. Gait Evaluation of Institutionalized Elders – A Feasibility Study. *J Gerontol* 2017; **71**
- 46 **McGinley JL**, Baker R, Wolfe R, Morris ME. The reliability of three-dimensional kinematic gait measurements: a systematic review. *Gait Posture* 2009; **29**: 360-369 [PMID: 19013070 DOI: 10.1016/j.gaitpost.2008.09.003]
- 47 **Littrell ME**, Chang YH, Selgrade BP. Development and Assessment of a Low-Cost Clinical Gait Analysis System. *J Appl Biomech* 2018; **1**-19 [PMID: 29989476 DOI: 10.1123/jab.2017-0370]
- 48 **Meldrum D**, Shouldice C, Conroy R, Jones K, Forward M. Test-retest reliability of three dimensional gait analysis: including a novel approach to visualising agreement of gait cycle waveforms with Bland and Altman plots. *Gait Posture* 2014; **39**: 265-271 [PMID: 24139682 DOI: 10.1016/j.gaitpost.2013.07.130]
- 49 **Whiteley R**. Coach's eye. *Br J Sports Med* 2015; **49**: 1349 [PMID: 26048895 DOI: 10.1136/bjsports-2015-094656]
- 50 **Mousavi SH**, Hijmans JM, Moeini F, Rajabi R, Ferber R, van der Worp H, Zwerver J. Validity and reliability of a smartphone motion analysis app for lower limb kinematics during treadmill running. *Phys Ther Sport* 2020; **43**: 27-35 [PMID: 32062587 DOI: 10.1016/j.ptsp.2020.02.003]
- 51 **Krause DA**, Boyd MS, Hager AN, Smoyer EC, Thompson AT, Hollman JH. Reliability and accuracy of a goniometer mobile device application for video measurement of the functional

- movement screen deep squat test. *Int J Sports Phys Ther* 2015; **10**: 37-44 [PMID: 25709861]
- 52 **Guo LY**, Yang CC, Yang CHR, Hou YY, Chang JJ, Wu WL. The Feasibility of Using Electromagnetic Motion Capture System to Measure Primary and Coupled Movements of Cervical Spine. *J Med Biol Eng* 2011; **245** [DOI: 10.5405/jmbe.721]
- 53 **Feng B**, Zhang X, Zhao H. The Research of Motion Capture Technology Based on Inertial Measurement. In: 2013 IEEE 11th International Conference on Dependable, Autonomic and Secure Computing; 2013 Dec 21-22; Chengdu, China; IEEE, 2013: 238-243 [DOI: 10.1109/DASC.2013.69]
- 54 **Romero V**, Amaral J, Fitzpatrick P, Schmidt RC, Duncan AW, Richardson MJ. Can low-cost motion-tracking systems substitute a Polhemus system when researching social motor coordination in children? *Behav Res Methods* 2017; **49**: 588-601 [PMID: 27130173 DOI: 10.3758/s13428-016-0733-1]
- 55 **Menache A**. 1 - Motion Capture Primer. In: Menache A, editor. Understanding Motion Capture for Computer Animation (Second Edition). Boston: Morgan Kaufmann, 2011: 1-46
- 56 **Franz AM**, Seitel A, Cheray D, Maier-Hein L. Polhemus EM tracked Micro Sensor for CT-guided interventions. *Med Phys* 2019; **46**: 15-24 [PMID: 30414277 DOI: 10.1002/mp.13280]
- 57 **Chang FM**, Rhodes JT, Flynn KM, Carollo JJ. The role of gait analysis in treating gait abnormalities in cerebral palsy. *Orthop Clin North Am* 2010; **41**: 489-506 [PMID: 20868880 DOI: 10.1016/j.ocl.2010.06.009]
- 58 **Broström EW**, Esbjörnsson AC, von Heideken J, Iversen MD. Gait deviations in individuals with inflammatory joint diseases and osteoarthritis and the usage of three-dimensional gait analysis. *Best Pract Res Clin Rheumatol* 2012; **26**: 409-422 [PMID: 22867935 DOI: 10.1016/j.berh.2012.05.007]
- 59 **Baker R**. Gait analysis methods in rehabilitation. *J Neuroeng Rehabil* 2006; **3**: 4 [PMID: 16512912 DOI: 10.1186/1743-0003-3-4]
- 60 **Wren TA**, Gorton GE 3rd, Ounpuu S, Tucker CA. Efficacy of clinical gait analysis: A systematic review. *Gait Posture* 2011; **34**: 149-153 [PMID: 21646022 DOI: 10.1016/j.gaitpost.2011.03.027]
- 61 **Li Y**, Koldenhoven RM, Liu T, Venuti CE. Age-related gait development in children with autism spectrum disorder. *Gait Posture* 2021; **84**: 260-266 [PMID: 33383537 DOI: 10.1016/j.gaitpost.2020.12.022]
- 62 **Murphy AT**, Kravtsov S, Sangeux M, Rawicki B, New PW. Utilizing three dimensional clinical gait analysis to optimize mobility outcomes in incomplete spinal cord damage. *Gait Posture* 2019; **74**: 53-59 [PMID: 31446333 DOI: 10.1016/j.gaitpost.2019.08.001]
- 63 **Wren TA**, Otsuka NY, Bowen RE, Scaduto AA, Chan LS, Sheng M, Hara R, Kay RM. Influence of gait analysis on decision-making for lower extremity orthopaedic surgery: Baseline data from a randomized controlled trial. *Gait Posture* 2011; **34**: 364-369 [PMID: 21723131 DOI: 10.1016/j.gaitpost.2011.06.002]
- 64 **Castorina S**, Guglielmino C, Castrogiovanni P, Szychlinska MA, Ioppolo F, Massimino P, Leonardi P, Maci C, Iannuzzi M, Di Giunta A, Musumeci G. Clinical evidence of traditional vs fast track recovery methodologies after total arthroplasty for osteoarthritic knee treatment. A retrospective observational study. *Muscles Ligaments Tendons J* 2017; **7**: 504-513 [PMID: 29387645 DOI: 10.11138/mltj/2017.7.3.504]
- 65 **Merlo A**, Campanini I. Impact of instrumental analysis of stiff knee gait on treatment appropriateness and associated costs in stroke patients. *Gait Posture* 2019; **72**: 195-201 [PMID: 31228856 DOI: 10.1016/j.gaitpost.2019.06.009]
- 66 **Wren TA**, Otsuka NY, Bowen RE, Scaduto AA, Chan LS, Dennis SW, Rethlefsen SA, Healy BS, Hara R, Sheng M, Kay RM. Outcomes of lower extremity orthopedic surgery in ambulatory children with cerebral palsy with and without gait analysis: results of a randomized controlled trial. *Gait Posture* 2013; **38**: 236-241 [PMID: 23219787 DOI: 10.1016/j.gaitpost.2012.11.018]
- 67 **Merletti R**, Botter A, Troiano A, Merlo E, Minetto MA. Technology and instrumentation for detection and conditioning of the surface electromyographic signal: state of the art. *Clin Biomech (Bristol, Avon)* 2009; **24**: 122-134 [PMID: 19042063 DOI: 10.1016/j.clinbiomech.2008.08.006]
- 68 **Benedetti MG**, Beghi E, De Tanti A, Cappozzo A, Basaglia N, Cutti AG, Cereatti A, Stagni R, Verdini F, Manca M, Fantozzi S, Mazzà C, Camomilla V, Campanini I, Castagna A, Cavazzuti L, Del Maestro M, Croce UD, Gasperi M, Leo T, Marchi P, Petrarca M, Piccinini L, Rabuffetti M, Ravaschio A, Sawacha Z, Spolaor F, Tesio L, Vannozzi G, Visintin I, Ferrarin M. SIAMOC position paper on gait analysis in clinical practice: General requirements, methods and appropriateness. Results of an Italian consensus conference. *Gait Posture* 2017; **58**: 252-260 [PMID: 28825997 DOI: 10.1016/j.gaitpost.2017.08.003]
- 69 **Meireles S**, De Groote F, Reeves ND, Verschueren S, Maganaris C, Luyten F, Jonkers I. Knee contact forces are not altered in early knee osteoarthritis. *Gait Posture* 2016; **45**: 115-120 [PMID: 26979892 DOI: 10.1016/j.gaitpost.2016.01.016]
- 70 **Goldring MB**, Goldring SR. Osteoarthritis. *J Cell Physiol* 2007; **213**: 626-634 [PMID: 17786965 DOI: 10.1002/jcp.21258]
- 71 **Fitzgerald GK**, Piva SR, Irrgang JJ. Reports of joint instability in knee osteoarthritis: its prevalence and relationship to physical function. *Arthritis Rheum* 2004; **51**: 941-946 [PMID: 15593258 DOI: 10.1002/art.20825]
- 72 **Kour N**, Gupta S, Arora S. A Survey of Knee Osteoarthritis Assessment Based on Gait. *Arch Comput Methods Eng* 2021; **28**: 345-385 [DOI: 10.1007/s11831-019-09379-z]
- 73 **Musumeci G**, Loreto C, Carnazza ML, Cardile V, Leonardi R. Acute injury affects lubricin expression in knee menisci: an immunohistochemical study. *Ann Anat* 2013; **195**: 151-158 [PMID:

- 23083677 DOI: [10.1016/j.aanat.2012.07.010](https://doi.org/10.1016/j.aanat.2012.07.010)]
- 74 **Castrogiovanni P**, Di Giunta A, Guglielmino C, Roggio F, Romeo D, Fidone F, Imbesi R, Loreto C, Castorina S, Musumeci G. The Effects of Exercise and Kinesio Tape on Physical Limitations in Patients with Knee Osteoarthritis. *J Funct Morphol Kinesiol* 2016; **1**: 355-368 [DOI: [10.3390/jfmk1040355](https://doi.org/10.3390/jfmk1040355)]
 - 75 **Sees JP**, Truong WH, Novacheck TF, Miller F, Georgiadis AG. What's New in the Orthopaedic Treatment of Ambulatory Children With Cerebral Palsy Using Gait Analysis. *J Pediatr Orthop* 2020; **40**: e498-e503 [PMID: [32501922](https://pubmed.ncbi.nlm.nih.gov/32501922/) DOI: [10.1097/BPO.0000000000001461](https://doi.org/10.1097/BPO.0000000000001461)]
 - 76 **Filho MC**, Yoshida R, Carvalho Wda S, Stein HE, Novo NF. Are the recommendations from three-dimensional gait analysis associated with better postoperative outcomes in patients with cerebral palsy? *Gait Posture* 2008; **28**: 316-322 [PMID: [18358723](https://pubmed.ncbi.nlm.nih.gov/18358723/) DOI: [10.1016/j.gaitpost.2008.01.013](https://doi.org/10.1016/j.gaitpost.2008.01.013)]
 - 77 **Seeger JB**, Schickschneit JP, Schuld C, Rupp R, Rickert M, Jahnke A, Maier GS, Clarius M. Instrumented gait analysis in patients with medial osteoarthritis of the knee after mobile-bearing unicompartmental knee arthroplasty. *Knee* 2018; **25**: 392-397 [PMID: [29551277](https://pubmed.ncbi.nlm.nih.gov/29551277/) DOI: [10.1016/j.knee.2018.02.014](https://doi.org/10.1016/j.knee.2018.02.014)]
 - 78 **Temporiti F**, Zanotti G, Furone R, Molinari S, Zago M, Loppini M, Galli M, Grappiolo G, Gatti R. Gait analysis in patients after bilateral versus unilateral total hip arthroplasty. *Gait Posture* 2019; **72**: 46-50 [PMID: [31136942](https://pubmed.ncbi.nlm.nih.gov/31136942/) DOI: [10.1016/j.gaitpost.2019.05.026](https://doi.org/10.1016/j.gaitpost.2019.05.026)]
 - 79 **Schulte TL**, Hierholzer E, Boerke A, Lerner T, Liljenqvist U, Bullmann V, Hackenberg L. Raster stereography versus radiography in the long-term follow-up of idiopathic scoliosis. *J Spinal Disord Tech* 2008; **21**: 23-28 [PMID: [18418132](https://pubmed.ncbi.nlm.nih.gov/18418132/) DOI: [10.1097/BSD.0b013e318057529b](https://doi.org/10.1097/BSD.0b013e318057529b)]
 - 80 **Schulte TL**, Liljenqvist U, Hierholzer E, Bullmann V, Halm HF, Lauber S, Hackenberg L. Spontaneous correction and derotation of secondary curves after selective anterior fusion of idiopathic scoliosis. *Spine (Phila Pa 1976)* 2006; **31**: 315-321 [PMID: [16449905](https://pubmed.ncbi.nlm.nih.gov/16449905/) DOI: [10.1097/01.brs.0000197409.03396.24](https://doi.org/10.1097/01.brs.0000197409.03396.24)]
 - 81 **Drerup B**, Hierholzer E. Assessment of scoliotic deformity from back shape asymmetry using an improved mathematical model. *Clin Biomech (Bristol, Avon)* 1996; **11**: 376-383 [PMID: [11415649](https://pubmed.ncbi.nlm.nih.gov/11415649/) DOI: [10.1016/0268-0033\(96\)00025-3](https://doi.org/10.1016/0268-0033(96)00025-3)]
 - 82 **Drerup B**, Hierholzer E. Evaluation of frontal radiographs of scoliotic spines--Part I. Measurement of position and orientation of vertebrae and assessment of clinical shape parameters. *J Biomech* 1992; **25**: 1357-1362 [PMID: [1400537](https://pubmed.ncbi.nlm.nih.gov/1400537/) DOI: [10.1016/0021-9290\(92\)90291-8](https://doi.org/10.1016/0021-9290(92)90291-8)]
 - 83 **Drerup B**, Hierholzer E. Evaluation of frontal radiographs of scoliotic spines--Part II. Relations between lateral deviation, lateral tilt and axial rotation of vertebrae. *J Biomech* 1992; **25**: 1443-1450 [PMID: [1337085](https://pubmed.ncbi.nlm.nih.gov/1337085/) DOI: [10.1016/0021-9290\(92\)90057-8](https://doi.org/10.1016/0021-9290(92)90057-8)]
 - 84 **Mohokum M**, Mendoza S, Udo W, Sitter H, Paletta JR, Skwara A. Reproducibility of rasterstereography for kyphotic and lordotic angles, trunk length, and trunk inclination: a reliability study. *Spine (Phila Pa 1976)* 2010; **35**: 1353-1358 [PMID: [20505568](https://pubmed.ncbi.nlm.nih.gov/20505568/) DOI: [10.1097/BRS.0b013e3181c8bc157](https://doi.org/10.1097/BRS.0b013e3181c8bc157)]
 - 85 **Guidetti L**, Bonavolontà V, Tito A, Reis VM, Gallotta MC, Baldari C. Intra- and interday reliability of spine rasterstereography. *Biomed Res Int* 2013; **2013**: 745480 [PMID: [23819119](https://pubmed.ncbi.nlm.nih.gov/23819119/) DOI: [10.1155/2013/745480](https://doi.org/10.1155/2013/745480)]
 - 86 **Michalik R**, Hamm J, Quack V, Eschweiler J, Gatz M, Betsch M. Dynamic spinal posture and pelvic position analysis using a rasterstereographic device. *J Orthop Surg Res* 2020; **15**: 389 [PMID: [32900390](https://pubmed.ncbi.nlm.nih.gov/32900390/) DOI: [10.1186/s13018-020-01825-0](https://doi.org/10.1186/s13018-020-01825-0)]
 - 87 **Betsch M**, Wild M, Jungbluth P, Hakimi M, Windolf J, Haex B, Horstmann T, Rapp W. Reliability and validity of 4D rasterstereography under dynamic conditions. *Comput Biol Med* 2011; **41**: 308-312 [PMID: [21489425](https://pubmed.ncbi.nlm.nih.gov/21489425/) DOI: [10.1016/j.compbiomed.2011.03.008](https://doi.org/10.1016/j.compbiomed.2011.03.008)]
 - 88 **Hierholzer E**, Hackenberg L. Three-dimensional shape analysis of the scoliotic spine using MR tomography and rasterstereography. *Stud Health Technol Inform* 2002; **91**: 184-189 [PMID: [15457720](https://pubmed.ncbi.nlm.nih.gov/15457720/)]
 - 89 **Krott NL**, Wild M, Betsch M. Meta-analysis of the validity and reliability of rasterstereographic measurements of spinal posture. *Eur Spine J* 2020; **29**: 2392-2401 [PMID: [32277336](https://pubmed.ncbi.nlm.nih.gov/32277336/) DOI: [10.1007/s00586-020-06402-x](https://doi.org/10.1007/s00586-020-06402-x)]
 - 90 **Cudré-Mauroux N**, Kocher N, Bonfils R, Pirlot M, Meichtry A, Hilfiker R. Relationship between impaired functional stability and back pain in children: an exploratory cross-sectional study. *Swiss Med Wkly* 2006; **136**: 721-725 [PMID: [17183436](https://pubmed.ncbi.nlm.nih.gov/17183436/)]
 - 91 **Albertsen IM**, Brockmann B, Hollander K, Schröder J, Zech A, Sehner S, Stücker R, Babin K. Spinal posture changes using dynamic rasterstereography during the modified Matthiass test discriminate between postural weak and strong healthy children (10-14 years): a pilot study. *Eur J Pediatr* 2018; **177**: 1327-1334 [PMID: [29934774](https://pubmed.ncbi.nlm.nih.gov/29934774/) DOI: [10.1007/s00431-018-3186-y](https://doi.org/10.1007/s00431-018-3186-y)]
 - 92 **Mahlknecht JF**. [The prevalence of postural disorders in children and adolescents: a cross sectional study]. *Z Orthop Unfall* 2007; **145**: 338-342 [PMID: [17607634](https://pubmed.ncbi.nlm.nih.gov/17607634/) DOI: [10.1055/s-2007-965256](https://doi.org/10.1055/s-2007-965256)]
 - 93 **Stallknecht SE**, Strandberg-Larsen K, Hestbæk L, Andersen AN. Spinal pain and co-occurrence with stress and general well-being among young adolescents: a study within the Danish National Birth Cohort. *Eur J Pediatr* 2017; **176**: 807-814 [PMID: [28470441](https://pubmed.ncbi.nlm.nih.gov/28470441/) DOI: [10.1007/s00431-017-2915-y](https://doi.org/10.1007/s00431-017-2915-y)]
 - 94 **Wirth B**, Knecht C, Humphreys K. Spine Day 2012: spinal pain in Swiss school children-epidemiology and risk factors. *BMC Pediatr* 2013; **13**: 159 [PMID: [24094041](https://pubmed.ncbi.nlm.nih.gov/24094041/) DOI: [10.1186/1471-2431-13-159](https://doi.org/10.1186/1471-2431-13-159)]

- 95 **März K**, Adler W, Matta RE, Wolf L, Wichmann M, Bergauer B. Can different occlusal positions instantaneously impact spine and body posture? *J Orofac Orthop* 2017; **78**: 221-232 [PMID: 27921118 DOI: 10.1007/s00056-016-0073-x]
- 96 **Manfredini D**, Castroflorio T, Perinetti G, Guarda-Nardini L. Dental occlusion, body posture and temporomandibular disorders: where we are now and where we are heading for. *J Oral Rehabil* 2012; **39**: 463-471 [PMID: 22435603 DOI: 10.1111/j.1365-2842.2012.02291.x]
- 97 **Bergamini M**, Pierleoni F, Gizdulich A, Bergamini C. Dental occlusion and body posture: a surface EMG study. *Cranio* 2008; **26**: 25-32 [PMID: 18290522 DOI: 10.1179/crn.2008.041]
- 98 **Sforza C**, Tartaglia GM, Solimene U, Morgun V, Kaspranskiy RR, Ferrario VF. Occlusion, sternocleidomastoid muscle activity, and body sway: a pilot study in male astronauts. *Cranio* 2006; **24**: 43-49 [PMID: 16541845 DOI: 10.1179/crn.2006.008]
- 99 **Szucs KA**, Brown EVD. Rater reliability and construct validity of a mobile application for posture analysis. *J Phys Ther Sci* 2018; **30**: 31-36 [PMID: 29410561 DOI: 10.1589/jpts.30.31]
- 100 **Hopkins BB**, Vehrs PR, Fellingham GW, George JD, Hager R, Ridge ST. Validity and Reliability of Standing Posture Measurements Using a Mobile Application. *J Manipulative Physiol Ther* 2019; **42**: 132-140 [PMID: 31000345 DOI: 10.1016/j.jmpt.2019.02.003]
- 101 **Iacob SM PhD**, Chisnoiu AM PhD, Lascu LM PhD, Berar AM PhD, Studnicska D MD, Fluerasu MI PhD. Is PostureScreen® Mobile app an accurate tool for dentists to evaluate the correlation between malocclusion and posture? *Cranio* 2020; **38**: 233-239 [PMID: 30198398 DOI: 10.1080/08869634.2018.1512197]
- 102 **Mercer K**, Giangregorio L, Schneider E, Chilana P, Li M, Grindrod K. Acceptance of Commercially Available Wearable Activity Trackers Among Adults Aged Over 50 and With Chronic Illness: A Mixed-Methods Evaluation. *JMIR Mhealth Uhealth* 2016; **4**: e7 [PMID: 26818775 DOI: 10.2196/mhealth.4225]
- 103 **Lewis JE**, Neider MB. Designing Wearable Technology for an Aging Population. *Ergon Des* 2017; **25**: 4-10 [DOI: 10.1177/1064804616645488]
- 104 **Benson LC**, Clermont CA, Bošnjak E, Ferber R. The use of wearable devices for walking and running gait analysis outside of the lab: A systematic review. *Gait Posture* 2018; **63**: 124-138 [PMID: 29730488 DOI: 10.1016/j.gaitpost.2018.04.047]
- 105 **Muro-de-la-Herran A**, Garcia-Zapirain B, Mendez-Zorrilla A. Gait analysis methods: an overview of wearable and non-wearable systems, highlighting clinical applications. *Sensors (Basel)* 2014; **14**: 3362-3394 [PMID: 24556672 DOI: 10.3390/s140203362]
- 106 **Simpson L**, Maharaj MM, Mobbs RJ. The role of wearables in spinal posture analysis: a systematic review. *BMC Musculoskelet Disord* 2019; **20**: 55 [PMID: 30736775 DOI: 10.1186/s12891-019-2430-6]
- 107 **Rao PJ**, Phan K, Maharaj MM, Pelletier MH, Walsh WR, Mobbs RJ. Accelerometers for objective evaluation of physical activity following spine surgery. *J Clin Neurosci* 2016; **26**: 14-18 [PMID: 26765766 DOI: 10.1016/j.jocn.2015.05.064]
- 108 **Xu J**, Bao T, Lee UH, Kinnaird C, Carender W, Huang Y, Sienko KH, Shull PB. Configurable, wearable sensing and vibrotactile feedback system for real-time postural balance and gait training: proof-of-concept. *J Neuroeng Rehabil* 2017; **14**: 102 [PMID: 29020959 DOI: 10.1186/s12984-017-0313-3]
- 109 **Miyajima S**, Tanaka T, Imamura Y, Kusaka T. Lumbar joint torque estimation based on simplified motion measurement using multiple inertial sensors. *Annu Int Conf IEEE Eng Med Biol Soc* 2015; **2015**: 6716-6719 [PMID: 26737834 DOI: 10.1109/EMBC.2015.7319934]
- 110 **Hansraj KK**. Assessment of stresses in the cervical spine caused by posture and position of the head. *Surg Technol Int* 2014; **25**: 277-279 [PMID: 25393825]
- 111 **Abyarjoo F**, O-Lamnithipong N, Tangnimitchok S, Ortega F, Barreto A. PostureMonitor: Real-Time IMU Wearable Technology to Foster Poise and Health. In: Marcus A, editor. Design, User Experience, and Usability: Interactive Experience Design. DUXU 2015. Lecture Notes in Computer Science, vol 9188. Cham: Springer, 2015: 543-552 [DOI: 10.1007/978-3-319-20889-3_50]
- 112 **Harvey RH**, Peper E, Mason L, Joy M. Effect of Posture Feedback Training on Health. *Appl Psychophysiol Biofeedback* 2020; **45**: 59-65 [PMID: 32232605 DOI: 10.1007/s10484-020-09457-0]
- 113 **Yoong NKM**, Perring J, Mobbs RJ. Commercial Postural Devices: A Review. *Sensors (Basel)* 2019; **19** [PMID: 31771130 DOI: 10.3390/s19235128]



Published by **Baishideng Publishing Group Inc**
7041 Koll Center Parkway, Suite 160, Pleasanton, CA 94566, USA

Telephone: +1-925-3991568

E-mail: bpgoffice@wjgnet.com

Help Desk: <https://www.f6publishing.com/helpdesk>

<https://www.wjgnet.com>

