

## Circulating programmed death ligand-1 (cPD-L1) in non-small-cell lung cancer (NSCLC)

Silvia Vecchiarelli<sup>1,\*</sup>, Francesco Passiglia<sup>2,\*</sup>, Armida D’Incecco<sup>3,\*</sup>, Marianna Gallo<sup>4</sup>, Antonella De Luca<sup>4</sup>, Elisa Rossi<sup>5</sup>, Federica D’Incà<sup>1</sup>, Gabriele Minuti<sup>1</sup>, Lorenza Landi<sup>1</sup>, Chiara Bennati<sup>1</sup>, Michela Spreafico<sup>1</sup>, Manolo D’Arcangelo<sup>1</sup>, Valentina Mazza<sup>1</sup>, Nicola Normanno<sup>4</sup> and Federico Cappuzzo<sup>1</sup>

<sup>1</sup>Department of Oncology and Hematology, AUSL della Romagna, Ravenna, Italy

<sup>2</sup>Department of Surgical, Oncological and Stomatological Disciplines, University of Palermo, Palermo, Italy

<sup>3</sup>Medical Oncology and Immunotherapy, University Hospital of Siena, Siena, Italy

<sup>4</sup>Cell Biology and Biotherapy Unit, Istituto Nazionale Tumori "Fondazione G Pascale"-IRCCS, Naples, Italy

<sup>5</sup>Fondazione Ricerca Traslazionale, Rome, Italy

\*These authors contributed equally to this work

**Correspondence to:** Federico Cappuzzo, **email:** federico.cappuzzo@auslromagna.it

**Keywords:** PD-L1; immunotherapy; biomarkers; non-small-cell lung cancer

**Received:** November 28, 2017

**Accepted:** February 27, 2018

**Published:** April 03, 2018

**Copyright:** Vecchiarelli et al. This is an open-access article distributed under the terms of the Creative Commons Attribution License 3.0 (CC BY 3.0), which permits unrestricted use, distribution, and reproduction in any medium, provided the original author and source are credited.

### ABSTRACT

**Background:** This study aimed at investigating feasibility of programmed death ligand-1 (PD-L1) testing in plasma samples of advanced NSCLC patients receiving first-line treatment, assessing whether circulating (c)PD-L1 levels were modified by the therapy and whether baseline cPD-L1 levels were associated with patients' clinical responses and survival outcome.

**Methods:** Peripheral blood samples were collected from 16 healthy volunteers and 56 newly diagnosed NSCLC patients before and at 12th week during the course of first-line therapy. The level of PD-L1 was measured in plasma samples using the human (PD-L1/CD274) ELISA kit (CUSABIO, MD, USA). The Mann Whitney test or Fisher's test were used for comparisons. Survival analysis was performed using Kaplan Meyer method, providing median and *p*-value.

**Results:** Baseline median cPD-L1 was 42.21 pg/ml (range 12.00-143.49) in NSCLC patients and 37.81 pg/ml (range 9.73-90.21) in healthy control cohort (*p* = 0.78). Median cPD-L1 increased in patients treated with first-line chemotherapy (63.20 pg/ml vs 39.34 pg/ml; *p* = 0.002), with no changes in patients exposed to non-chemotherapy drugs (42.39 pg/ml vs 50.67 pg/ml; *p* = 0.398). Time to progression and overall survival were 4.4 vs 6.9 months (*p* = 0.062) and 8.8 vs 9.3 months (*p* = 0.216) in cPD-L1 positive vs cPD-L1 negative patients. Baseline cPD-L1 levels increased with the ascending number of metastatic sites, even if the association was not statistically significant (*p* = 0.063).

**Conclusions:** This study showed that cPD-L1 testing is feasible, with chemotherapy influencing PD-L1 plasma levels. The possibility of using such test for predicting or monitoring the effect of immunotherapy or combination of chemotherapy and immunotherapy warrant further investigations.

## INTRODUCTION

A deeper understanding of the molecular basis of tumor immunogenicity and cancer immune-escape favored the development of a new class of drugs which are able to modulate the anti-tumor immune response [1, 2], ultimately leading to an impressive and durable clinical benefit in a significant subgroup of patients with advanced non-small cell lung cancer (NSCLC). Particularly to date we have three monoclonal antibodies (MoAbs), Nivolumab, Pembrolizumab and Atezolizumab, targeting the programmed cell death 1 (PD1)/programmed cell death 1 ligand (PD-L1) immune-checkpoint, approved by regulatory authorities for the treatment of advanced NSCLC [3]. Overall, four phase III randomized studies demonstrated that PD1/PD-L1 inhibitors are more effective and better tolerated than the second-line single agent chemotherapy [4–7], thus representing the new standard of care for NSCLC patients who experienced progression after platinum-combinations. A recent survival update of the CheckMate-003 phase I study revealed that about 15% of NSCLC patients were still alive after 5 years of therapy with nivolumab [8], thus suggesting that these drugs could offer the potential for a durable disease control and long-term survival in a subset of patients. Conversely, about 50% of pre-treated patients do not gain any benefit from immunotherapy [4–7], and a small subgroup of them develop “hyperprogression” or early death within the first 3 months of therapy with checkpoint inhibitors (ICIs) [9–11], making the identification of predictive biomarkers an urgent challenge for translational lung cancer research. The majority of studies including pre-treated NSCLC patients showed that the benefit of ICIs increased accordingly to the tumor PDL1-expression. However patients with PDL1 negative tumors also benefited from checkpoint inhibitors as compared to standard chemotherapy with docetaxel [4–7], suggesting that, because of its low sensitivity and specificity, PDL1 status alone may not be considered as an appropriate biomarker to exclude pre-treated patients from immunotherapy. Recently, Pembrolizumab revealed a significant superiority over platinum based chemotherapy as first-line treatment of non-oncogene addicted NSCLC patients whose tumors overexpressed PD-L1 >50% [12], becoming the new backbone in this subgroup of patients who represent about 30% of the overall untreated population. In addition, recent studies showed that ICIs are effective in first-line setting irrespective of PD-L1 expression when used in combination with chemotherapy [13]. In light of these evidences, the PD-L1 testing has been incorporated within the international guidelines and it is now recommended together with the molecular testing for all patients with newly diagnosed advanced NSCLC, in order to ensure the most effective upfront treatment for each patient [3]. Even if limited by a lack of

standardization in testing methods, the PD-L1 assessment by immune-histochemistry (IHC) on tumor tissue represents the current gold standard. However it's not applicable in those patients whose tissue is not available at the time of diagnosis or tissue analysis results are not evaluable. Furthermore a biopsy sample is just a snapshot of the tumor not reflecting the overall microenvironment, and thus subjected to the intra-tumor heterogeneity. In addition, the immune response is a very complex and dynamic process taking place in different sites other than tumor-microenvironment, suggesting that the PD-L1 evaluation on tumor site could be not completely representative of the overall individual immune status. In the last decade an alternative not invasive approach, known as liquid biopsy, has been proposed to overcome all the aforementioned issues [14]. Epidermal growth factor receptor (EGFR) mutational testing by circulating tumor (ct) DNA analysis demonstrated an adequate diagnostic accuracy [15–18] and has been recently incorporated in the clinical management of all EGFR-mutated NSCLC patients who progressed after first-generation EGFR tyrosine kinase inhibitors (TKIs) and in a subgroup of patients with newly diagnosed metastatic disease who cannot undergo tumor biopsy or received uninformative results from tissue molecular analysis [3]. Even if the modulation of immune-system is a more complex and highly regulated process, however the identification and validation of potential biomarkers in the blood of patients could offer a valid tool in the hands of oncologists to easily monitor the efficacy of ICIs therapy. In the current study we aim to evaluate the feasibility of PD-L1 testing in the plasma of advanced NSCLC patients and to assess if circulating (c) PD-L1 levels may be modified by first-line therapies and are correlated with patients' outcomes.

## RESULTS

### Patients' characteristics and cPD-L1 detection

From January 2013 to November 2015 a total of 56 patients with histologically or cytologically confirmed diagnosis of advanced NSCLC who were candidate to receive first-line therapy and 16 healthy volunteers were included in the study. Median age was 70 years (range 48–85) and the majority were males and exhibited an Eastern Cooperative Oncology Group (ECOG) performance status score of 0 as reported in Table 1. The majority of patients were former smokers (57.1%) with adenocarcinoma histology (78.6%). Molecular alterations including *KRAS* mutations, *EGFR* mutations, and *ALK/ROS1* rearrangements were detected in 23.2%, 19.6%, and 5.4% of analyzed tumor samples, respectively. Chemotherapy represented the first line treatment in 41 out of 56 (73.2%) patients, while 12 (21.4%) patients received targeted therapies including EGFR-TKIs (gefitinib  $N = 4$ ,

**Table 1: Patients' characteristics**

Characteristic	Total (n)	%
<b>Total number of patients</b>	56	100
<b>Median age (years–range)</b>	70	48–85
<b>Gender</b>		
Male	38	67.9
Female	18	32.1
<b>Histology</b>		
Adenocarcinoma	44	78.6
Squamous-cell carcinoma	6	10.7
Not specified	6	10.7
<b>Smoking history</b>		
Never	11	19.6
Former	32	57.1
Current	13	23.2
<b>Performance status</b>		
0	38	67.8
1	10	17.9
2	6	10.7
3	2	3.6
<b>Number of metastatic sites</b>		
1–2	20	35.7
3–4	31	55.4
≥5	5	8.9
<b>First line treatment</b>		
Chemotherapy	41	73.2
Targeted therapies	12	21.4
Immunotherapy	3	5.4
<b>EGFR status</b>		
Mutated <sup>a</sup>	11	19.6
Wild type	37	66.1
Unknown	8	14.3
<b>KRAS status</b>		
Mutated <sup>b</sup>	13	23.2
Wild type	25	44.7
Unknown	18	32.1
<b>ALK status</b>		
Rearranged	2	3.6
Wild type	37	66.1
Unknown	17	30.3
<b>ROS1 status</b>		
Rearranged	1	1.8
Wild type	18	32.1
Unknown	37	66.1
<b>Triple negative<sup>c</sup></b>	9	16.1

<sup>a</sup>EGFR mutations included: exon 18 = 1 (9.0%); exon 19 = 4 (36.4%); exon 20 = 2 (18.2%); exon 21 = 4 (36.4%); <sup>b</sup>KRAS mutations included: codon 12 = 13 (100%); <sup>c</sup>Triple negative included EGFR/KRAS/ALK/ROS1 wild-type patients.

erlotinib *N* = 3, dacomitinib *N* = 2) and ALK/ROS1-TKIs (crizotinib, *N* = 3) and only 3 (5.4%) patients received

immunotherapy with nivolumab within a clinical trial. Median PD-L1 plasma level at baseline was 42.21 pg/

**Table 2: Correlation between plasma PD-L1 levels and patients' characteristics**

Patients characteristic	PD-L1 classes (based on medianvalue) - N (%)		p value
	negative	positive	
<b>Age</b>			
≤70.4	13 (46.4)	15 (53.6)	0.58
>70.4	11 (39.3)	17 (60.7)	
<b>Gender</b>			
Male	16 (42.1)	22 (57.9)	0.86
Female	8 (44.4)	10 (55.6)	
<b>Smoking history</b>			
Never/Former	19 (44.2)	24 (55.8)	0.71
Current	5 (38.5)	8 (61.5)	
<b>Number of metastatic sites</b>			
1	2 (50.0)	2 (50.0)	0.06
2	8 (50.0)	8 (50.0)	
3	11 (47.8)	12 (52.2)	
4	2 (25.0)	6 (75.0)	
5	1 (33.3)	2 (66.7)	
6	0 (0.0)	2 (100.0)	
<b>EGFR status</b>			
Mutated <sup>a</sup>	5 (45.5)	6 (54.5)	0.97
Wild type	17 (45.9)	20 (54.1)	
<b>KRAS status</b>			
Mutated <sup>b</sup>	5 (38.5)	8 (61.5)	0.42
Wild type	13 (52.0)	12 (48.0)	
<b>ALK status</b>			
Rearranged	1 (50.0)	1 (50.0)	0.79
Wild type	15 (40.5)	22 (59.5)	
<b>ROS1 status</b>			
Rearranged	1 (100.0)	0 (0.0)	0.36
Wild type	6 (33.3)	12 (66.7)	

<sup>a</sup>EGFR mutations included: exon 18 = 1 (9.0%); exon 19 = 4 (36.4%); exon 20 = 2 (18.2%); exon 21 = 4 (36.4%); <sup>b</sup>KRAS mutations included: codon 12 = 13 (100%).

ml (range 12.00-143.49) in NSCLC patients, thus not significantly higher than that observed in the healthy control cohort (37.81 pg/ml, range 9.73-90.21;  $p = 0.78$ ). Considering as cut-off value the median PD-L1 plasma level of 37.81 pg/ml detected in the healthy patients cohort, patients were classified as “cPD-L1 positive” (median plasma PD-L1 > 37.81 pg/ml;  $N = 32$ , 57.1%) or “cPD-L1 negative (median plasma PDL1 < 37.81 pg/ml;  $N = 24$ , 42.9%). As reported in Table 2, no significant association was observed between cPD-L1 levels and patients' characteristics. A trend toward an increase of cPD-L1 according to the number of metastatic sites has been reported, even if it was not statistically significant ( $p = 0.063$ , Figure 1).

### Effect of treatments on cPD-L1 levels

In 25 out of 56 patients evaluable after 3 months of first-line therapy, median PD-L1 plasma levels

significantly increased as compared to baseline median value (58.63 pg/mL,  $p = 0.04$ ). Among 18/41 patients treated with first-line chemotherapy-regimens and evaluable after 3 months, we observed a significant increase of the median cPD-L1 (63.20 pg/ml (range 24.65 – 165.65) versus 39.34 pg/ml (range 20.05 – 143.49),  $p = 0.002$ ). Conversely, among 7/12 patients treated with no-chemotherapy agents (dacomitinib  $N = 2$ , gefitinib  $N = 2$ , erlotinib  $N = 1$ , nivolumab  $N = 2$ ) and evaluable after 3 months, not significant changes in median cPD-L1 has been observed (42.39 pg/ml (range 14.31 – 114.76) vs 50.67 pg/ml (range 13.66 – 65.95),  $p = 0.398$ ) (Figure 2).

### cPD-L1 level and tumor response

After 3 months of first-line treatment, 47 of 56 (83.9%) NSCLC patients were evaluable for tumor response. Among them, one patient (2.1%) experienced complete response (CR), 20 (42.5%) had a partial response

(PR), 19 (40.4%) stable disease (SD), and 7 (14.9%) progression disease (PD). No significant differences in overall response rates (ORR: CR+PR) have been observed between cPDL1 positive and cPDL1 negative patients in the overall NSCLC population (ORR: 43.5% vs 45.8%;  $p = 0.87$ ), in patients treated with chemotherapy-regimens (ORR: 47.1% vs 40%,  $p = 0.735$ ), and in patients treated with no chemotherapy regimens (ORR: 33.3% vs 55.6%;  $p = 0.608$ ), as illustrated in Table 3.

### cPD-L1 level and patients' survival outcomes

At a median follow-up time of 14.7 months (range 2–36), disease progression occurred in 41 patients, while 36 patients died because of tumor progression, and 20 patients were still alive at the time of data analysis. Median time to progression (TTP) was 5.6 months and median overall survival (OS) was 8.8 months in the overall NSCLC population. As showed in Figure 3, no difference in TTP nor in OS were observed in cPD-L1 positive as compared to cPD-L1 negative patients (TTP: 4.4 versus 6.9 months,  $p = 0.062$ ; OS: 8.8 versus 9.3 months,  $p = 0.216$ ). No differences in TTP nor in OS were observed between cPD-L1 positive and negative subgroups even when the analysis was restricted to patients treated with chemotherapy (TTP: 3.3 versus 5.6 months,  $p = 0.623$ ; OS: 4.1 versus 6.8 months,  $p = 0.322$ ) or no chemotherapy-regimens (TTP: 4.6 versus 15.9 months,  $p = 0.188$ ; OS: 9.7 versus 17.4 months,  $p = 0.887$ ).

## DISCUSSION

This proof-of concept study demonstrated the feasibility of PD-L1 testing in plasma samples of patients with advanced NSCLC, showing that the cPD-L1

expression levels may be significantly modified by the standard first-line chemotherapy. As tumor tissue PDL1 assessment by IHC is currently recommended by all the international guidelines as diagnostic test for patients with advanced NSCLC who are candidate to receive upfront treatment [3], the possibility to detect and monitor PDL1 expression in the plasma before and during the course of therapies could play an important role in the management of NSCLC patients, especially when tissue is not available at the time of diagnosis or tissue analysis results are not evaluable. Particularly, monitoring the cPDL1 level changes during first-line treatment revealed opposite trends in predefined subsets of patients. Indeed the results of our analysis showed that the median cPDL1 levels significantly increased (63.20 pg/ml vs 39.34 pg/ml,  $p = 0.002$ ) in patients receiving first-line chemotherapy, providing a potential biological explanation to the efficacy of immunotherapy plus chemotherapy combinations even in the subgroup of patients with PD-L1 negative tumors at baseline IHC assessment [13]. Conversely in the small subgroup of patients treated with non-chemotherapy agents, largely represented by EGFR-mutated patients, the high median baseline PD-L1 value decreased (42.39 pg/ml vs 50.67 pg/ml,  $p = 0.398$ ) during EGFR-TKI treatment. These data are in line with recent evidences showing that PD-L1 is constitutively expressed by EGFR-mutated tumors and is subjected to decrease after EGFR-TKIs [19–21], thus making these patients less responsiveness to subsequent anti-PD1 therapies. Furthermore we know that although the high level of PD-L1 expression, oncogene-addicted NSCLC are associated with a very low tumor mutational burden [22] and a non-inflamed tumor microenvironment, and are characterized by neither an immune response nor a T-cell tumor infiltration

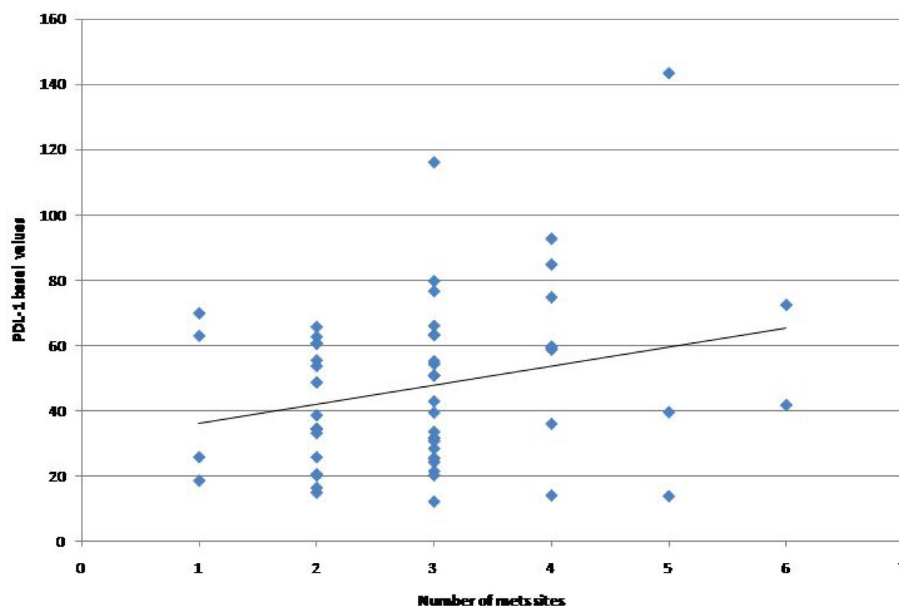


Figure 1: Baseline PD-L1 plasma levels according to the number of metastatic sites.

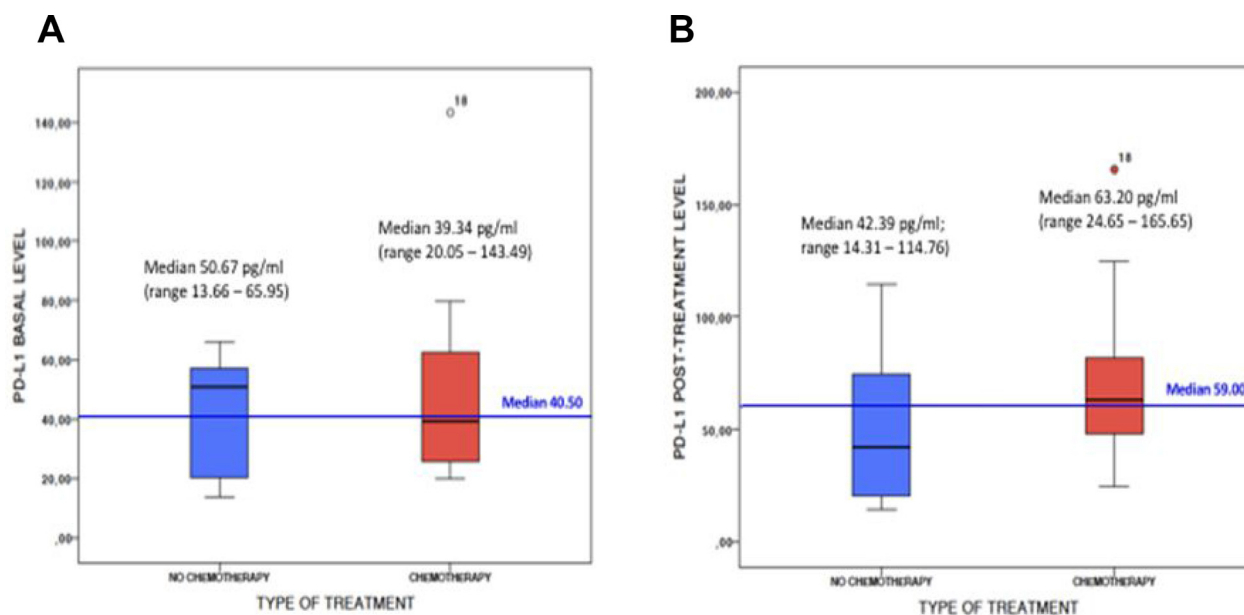
**Table 3: Tumor response rate in NSCLC patients**

Type of treatment	PD-L1 status	ORR-N (%)		p-value
		CR + PR	SD + PD	
All treatment	PD-L1 positive	10 (43.5)	13 (56.5)	0.87
	PD-L1 negative	11 (45.8)	13 (54.2)	
Chemotherapy	PD-L1 positive	8 (47.1)	9 (52.9)	0.73
	PD-L1 negative	6 (40.0)	9 (60.0)	
No chemotherapy	PD-L1 positive	2 (33.3)	4 (66.7)	0.60
	PD-L1 negative	5 (55.6)	4 (44.4)	

ORR = overall response rate; CR = complete response; PR = partial response; SD = stable disease; PD = progression disease.

[19, 23], thus less likely to respond to immunotherapy [23, 24]. Our findings demonstrated that cPD-L1 expression levels may be significantly modified by the patients' anticancer treatments. As compared to the archival tumor biopsy, the longitudinal monitoring of cPD-L1 levels in the plasma of NSCLC patients would allow to easily identify any significant variations during the course of therapies which can inform oncologists about treatment decisions in everyday practice. Furthermore several evidences revealed that PDL1 is an heterogeneous and dynamic biomarkers, subjected to both space and time variability [25]. Thus a single tumor biopsy could not reflect neither the overall tumor microenvironment nor the systemic immune response in different individuals [26]. In this regards the evaluation of cPD-L1 in the plasma of NSCLC patients could be more representative of the overall immune status at single patient level in a determinate time-point of the disease course supporting the oncologists in their clinical decisions. Pre-clinical data showed that only PD-

L1 positive, but not PD-L1 negative cell lines secreted cPD-L1 in their supernatant [27], suggesting that the cPD-L1 could derive from the cell surface protein through different mechanisms including proteolytic cleavage or alternative mRNA splicing. However the source of cPD-L1 remains uncertain and these preliminary data need to be proven in clinical setting. In addition to that, the results of our study showed an interesting trend toward a not significant increase of cPD-L1 levels according to the number of metastatic sites in the included population. As reported in previous studies [28], this association could be the result of a greater release of tumor DNA into the blood of patients with high tumor burden, suggesting that the extension of the disease could significantly influence our ability to detect PD-L1 in the plasma of patients with advanced NSCLC. This has been already demonstrated for EGFR-mutations detection by ctDNA analysis [29–31] in EGFR-positive NSCLC patients but need to be further investigated for cPD-L1 and other potential biomarkers



**Figure 2:** PD-L1 plasma levels at baseline (A) and after 3 months of first-line treatment (B) in subgroup of patients receiving chemotherapy (red) or no chemotherapy (blue) agents.

detected in the blood of NSCLC patients receiving ICIs. Finally some limiting factors of this study need to be mentioned, including the low number of evaluated patients, the short follow-up, the heterogeneity of both tumors' molecular profile and treatment regimens, and the lack of a tumor tissue analysis as reference test because of the unavailability of sufficient archival tissue for PD-L1 expression assessment. Thus it remains still unknown the relationship between cPD-L1 levels and tumor tissue PD-L1 expression or other peripheral blood parameters associated with systemic inflammatory state such as neutrophil-lymphocytes ratio. It would be interesting also to monitor the cPDL-1 levels beyond 12 weeks in order to investigate any significant modifications in NSCLC patients who respond to immunotherapy or chemo-immunotherapy combinations.

In conclusion the results of this study demonstrated that PDL1 testing in the plasma of advanced NSCLC patients is feasible and cPDL1 levels significantly increase during first-line chemotherapy. These data suggest cPD-L1 as a potential biomarker in the early prediction and real-time monitoring of both immunotherapy and chemo-immune combinations efficacy, warranting further investigations in prospective clinical studies including larger cohort of patients and longer follow-up. A dynamic assessment of cPD-L1 in association with other emerging biomarkers could allow a better patients' stratification favoring the development of personalized immune-treatment strategies.

## MATERIALS AND METHODS

### Patients

Patients were eligible if they had histologically or cytologically confirmed diagnosis of non- squamous or

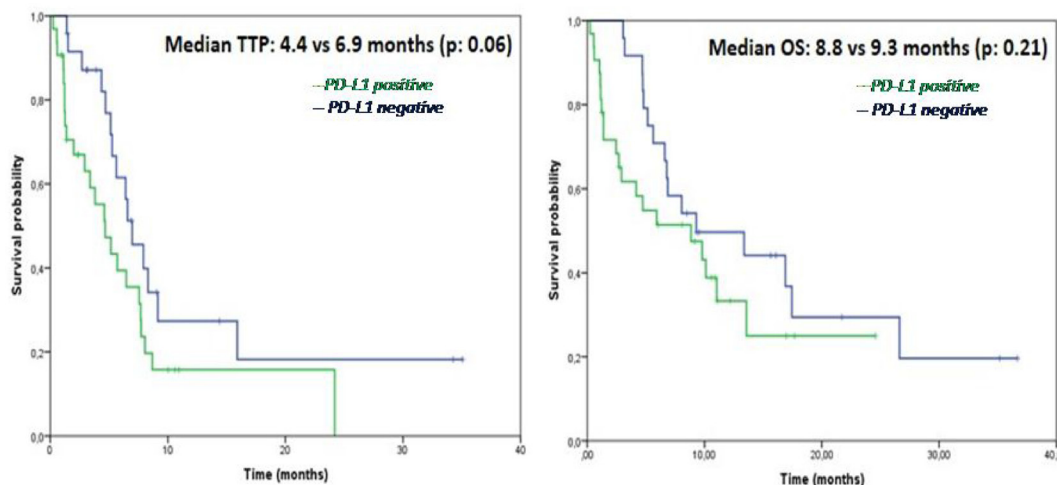
squamous NSCLC, stage IV (according to Version 8th of the International Association for the Study of Lung Cancer (IASLC) TNM Staging System), Eastern Cooperative Oncology Group (ECOG) performance-status score <3, and had not previously received any systemic treatment for advanced/metastatic disease.

A cohort of healthy volunteers (individuals who were not affected by oncological, autoimmune, metabolic and infectious diseases), was also included in the study for plasma PD-L1 assessment, and the results obtained were compared with those observed in NSCLC patients.

The study was conducted in accordance with the International Conference on Harmonization Guidelines on Good Clinical Practice and the Declaration of Helsinki. The trial protocol was previously approved by the local Independent Ethics Committee and both the cancer patients and the healthy volunteers provided a written informed consent before enrollment.

### Study design and treatment

From January 2013 to November 2015 eligible patients were included in this prospective cohort study and received first-line standard systemic treatment according to their tumors' histology and molecular profile. All the treatments were continued until disease progression or the occurrence of an unacceptable level of toxicity, or the completion of permitted cycles (up to 4-6 for platinum-based chemotherapies). Maintenance treatment with single agent pemetrexed was allowed for patients with non-squamous NSCLC who had not progression after 4 cycles of chemotherapy with platinum-pemetrexed. Radiological evaluation of treatment efficacy by CT-scan was performed after 12 weeks of therapy and responses were evaluated by Response Evaluation Criteria in Solid Tumors (RECIST) version 1.1.



**Figure 3:** Kaplan-Meier analysis of time to progression (TTP) (A) and overall survival (OS) (B) in NSCLC patients according to the baseline cPD-L1 status.

## Objectives of the Study

The main objective of the study was to evaluate the feasibility of PD-L1 testing in plasma samples of patients with advanced NSCLC and to determine how the expression levels of cPD-L1 might be modified by the standard first-line treatment.

Secondary objective of the study was to investigate the relationship between the plasma cPD-L1 levels of NSCLC patients, their clinical characteristics and treatment efficacy outcomes, including ORR, TTP and OS.

## Circulating PD-L1 assessment

Peripheral blood samples were collected from patients included in the study before and at 12 weeks during the course of first-line therapy, according to a simple and standardized protocol and stored frozen as 500 ml aliquots at  $-80^{\circ}\text{C}$ . The expression levels of PD-L1 were assessed in plasma samples using the Human programmed death ligand-1 (PD-L1/CD274) ELISA kit (CUSABIO, MD, USA). Plasma samples were centrifuged for 15 minutes at  $1000 \times g$  and the assay was performed according to the manufacturer's instructions. Briefly, 96-well plates were incubated with standards and plasma samples for 2 hours at  $37^{\circ}\text{C}$ . Then, a biotin-conjugated antibody specific for PD-L1 was added to each well. After several aspiration/wash processes, horseradish peroxidase (HRP)-conjugated avidin was added. After incubation with a substrate solution, samples absorbance was read at 450 nm with the iMark Microplate Absorbance Reader (Biorad, Italy). The concentrations of PD-L1 were calculated according to standard curves.

## Statistical analysis

The median PD-L1 plasma levels were calculated in healthy volunteers, and in NSCLC patients before and after 12 weeks of therapy. The Mann Whitney test was used for intergroup comparisons of two independent samples while Fisher's test was used for categorical values.

Paired Wilcoxon test was used to compare median PD-L1 before and after first line therapy. For efficacy analysis, patients were grouped according to their plasma PD-L1 concentration into "positive" if they had plasma PD-L1 concentration higher than median PD-L1 value observed in the healthy population or "negative" if they had plasma PD-L1 concentration below the median PD-L1 value observed in the healthy population. Patients' clinical-pathological characteristics and associations with plasma PD-L1 level were examined with a descriptive analysis comparing the differences by  $\chi^2$  test or Fisher's exact test as appropriate. A  $p$ -value  $< 0.05$  was considered significant.

Efficacy outcomes, including ORR, TTP and OS defined as the time between the date of inclusion and the date of disease progression or death, respectively, were assessed in cPDL1 positive vs cPDL1 negative patients both in the overall cancer population and in pre-defined subgroups of patients.

Survival analysis was performed using Kaplan Meyer method, providing median and  $p$ -values, with the use of the logrank test for comparisons. A  $p$ -value  $< 0.05$  was used as threshold for statistical significance. All the statistical analysis were performed using SPSS Statistic software version 20 (IBM, Armonk, New York, USA).

## Abbreviations

cPD-L1: circulating programmed cell death 1 ligand; CR: complete response; ct-DNA: circulating tumor DNA; ECOG: Eastern Cooperative Oncology Group; EGFR: Epidermal growth factor receptor; IASLC: International Association for the Study of Lung Cancer; ICIs: immune checkpoint inhibitors; IHC: immune-histochemistry; MoAbs: monoclonal antibodies; NSCLC: non-small cell lung cancer; ORR: overall response rates; PD: progression disease (PD); PD1: programmed cell death 1; PD-L1: programmed cell death 1 ligand; PR: partial response; SD: stable disease; TKIs: tyrosine kinase inhibitors.

## Author contributions

S.V, A.D, and F.C. conceived the study design and the experiments. M.G and A.D.L performed the experiments. E.R performed data analysis. S.V, F.P and A.D. analysed the data and wrote the manuscript. F.C and N.N drafted and edited the manuscript. All authors reviewed and approved the final manuscript.

## CONFLICTS OF INTEREST

The authors have no conflicts of interests to declare

## REFERENCES

1. Pardoll DM. The blockade of immune checkpoints in cancer immunotherapy. *Nat Rev Cancer*. 2012; 12:252–264.
2. Topalian SL, Drake CG, Pardoll DM. Targeting the PD-1/B7-H1(PD-L1) pathway to activate anti-tumor immunity. *Curr Opin Immunol*. 2012; 24:207–212.
3. Novello S, Barlesi F, Califano R, Cufer T, Ekman S, Levra MG, Kerr K, Popat S, Reck M, Senan S, Simo GV, Vansteenkiste J, Peters S; ESMO Guidelines Committee. Metastatic non-small-cell lung cancer: ESMO Clinical Practice Guidelines for diagnosis, treatment and follow-up. *Ann Oncol*. 2016; 27:v1–v27.



4. Brahmer J, Reckamp KL, Baas P, Crinò L, Eberhardt WE, Poddubskaya E, Antonia S, Pluzanski A, Vokes EE, Holgado E, Waterhouse D, Ready N, Gainor J, et al. Nivolumab versus Docetaxel in Advanced Squamous-Cell Non-Small-Cell Lung Cancer. *N Engl J Med.* 2015; 373:123–135.
5. Borghaei H, Paz-Ares L, Horn L, Spigel DR, Steins M, Ready NE, Chow LQ, Vokes EE, Felip E, Holgado E, Barlesi F, Kohlhäufel M, Arrieta O, et al. Nivolumab versus Docetaxel in Advanced Nonsquamous Non-Small-Cell Lung Cancer. *N Engl J Med.* 2015; 373:1627–1639.
6. Herbst RS, Baas P, Kim DW, Felip E, Pérez-Gracia JL, Han JY, Molina J, Kim JH, Arvis CD, Ahn MJ, Majem M, Fidler MJ, de Castro G Jr, et al. Pembrolizumab versus docetaxel for previously treated, PD-L1-positive, advanced non-small-cell lung cancer (KEYNOTE-010): a randomised controlled trial. *Lancet.* 2016; 387:1540–1550.
7. Rittmeyer A, Barlesi F, Waterkamp D, Park K, Ciardiello F, von Pawel J, Gadgeel SM, Hida T, Kowalski DM, Dols MC, Cortinovis DL, Leach J, Polikoff J, et al. Atezolizumab versus docetaxel in patients with previously treated non-small-cell lung cancer (OAK): a phase 3, open-label, multicentre randomised controlled trial. *Lancet.* 2017; 389:255–265.
8. Brahmer J. Five-year Survival Rate For Nivolumab-treated Advanced Lung Cancer Patients Much Higher Than Historical Rate. *AACR Annual Meeting* 2017.
9. Champiat S, Dercle L, Ammari S, Massard C, Hollebecque A, Postel-Vinay S, Chaput N, Eggermont A, Marabelle A, Soria JC, Féré C. Hyperprogressive Disease Is a New Pattern of Progression in Cancer Patients Treated by Anti-PD-1/PD-L1. *Clin Cancer Res.* 2017; 23:1920–1928.
10. Kato S, Goodman A, Walavalkar V, Barkauskas DA, Sharabi A, Kurzrock R. Hyperprogressors after Immunotherapy: Analysis of Genomic Alterations Associated with Accelerated Growth Rate. *Clin Cancer Res.* 2017; 23:4242–4250.
11. Peters S, Cappuzzo F, Horn L, Paz-Ares L, Borghaei H, Barlesi F, Steins M, Felip E, Spigel D, Dorange C, Lu H, Healey D, Sanchez TK, et al. OA03.05 Analysis of Early Survival in Patients with Advanced Non-Squamous NSCLC Treated with Nivolumab vs Docetaxel in CheckMate 057. *Journal of Thoracic Oncology.* 12:S253. <https://doi.org/10.1016/j.jtho.2016.11.241>.
12. Reck M, Rodríguez-Abreu D, Robinson AG, Hui R, Csőszi T, Fülöp A, Gottfried M, Peled N, Tafreshi A, Cuffe S, O'Brien M, Rao S, Hotta K, et al. Pembrolizumab versus Chemotherapy for PD-L1-Positive Non-Small-Cell Lung Cancer. *N Engl J Med.* 2016; 375:1823–1833.
13. Langer CJ, Gadgeel SM, Borghaei H, Papadimitrakopoulou VA, Patnaik A, Powell SF, Gentzler RD, Martins RG, Stevenson JP, Jalal SI, Panwalkar A, Yang JC, Gubens M, et al. Carboplatin and pemetrexed with or without pembrolizumab for advanced, non-squamous non-small-cell lung cancer: a randomised, phase 2 cohort of the open-label KEYNOTE-021 study. *Lancet Oncol.* 2016; 17:1497–1508.
14. Wan JCM, Massie C, Garcia-Corbacho J, Mouliere F, Brenton JD, Caldas C, Pacey S, Baird R, Rosenfeld N. Liquid biopsies come of age: towards implementation of circulating tumour DNA. *Nat Rev Cancer.* 2017; 17:223–238.
15. Qiu M, Wang J, Xu Y, Ding X, Li M, Jiang F, Xu L, Yin R. Circulating tumor DNA is effective for the detection of EGFR mutation in non-small cell lung cancer: a meta-analysis. *Cancer Epidemiol Biomarkers Prev.* 2015; 24:206–212.
16. Qian X, Liu J, Sun Y, Wang M, Lei H, Luo G, Liu X, Xiong C, Liu D, Liu J, Tang Y. Circulating cell-free DNA has a high degree of specificity to detect exon 19 deletions and the single-point substitution mutation L858R in non-small cell lung cancer. *Oncotarget.* 2016; 7:29154–29165. <https://doi.org/10.18632/oncotarget.8684>.
17. Luo J, Shen L, Zheng D. Diagnostic value of circulating free DNA for the detection of EGFR mutation status in NSCLC: a systematic review and meta-analysis. *Sci Rep.* 2014; 4:6269.
18. Oxnard GR, Thress KS, Alden RS, Lawrence R, Paweletz CP, Cantarini M, Yang JC, Barrett JC, Jänne PA. Association Between Plasma Genotyping and Outcomes of Treatment With Osimertinib (AZD9291) in Advanced Non-Small-Cell Lung Cancer. *J Clin Oncol.* 2016; 34:3375–3382.
19. D'Incecco A, Andreozzi M, Ludovini V, Rossi E, Capodanno A, Landi L, Tibaldi C, Minuti G, Salvini J, Coppi E, Chella A, Fontanini G, Filice ME, et al. PD-1 and PD-L1 expression in molecularly selected non-small-cell lung cancer patients. *Br J Cancer.* 2015; 112:95–102.
20. Akbay EA, Koyama S, Carretero J, Altabef A, Tchaicha JH, Christensen CL, Mikse OR, Cherniack AD, Beauchamp EM, Pugh TJ, Wilkerson MD, Fecci PE, Butaney M, et al. Total mutation burden (TMB) in lung cancer (LC) and relationship with response to PD-1/PD-L1 targeted therapies. *Journal of Clinical Oncology.* 2016; 34:9017.
21. Garon EB, Wolf B, Lisberg A, Kim KY, Horton JM, Kamranpour N, Chau K, Abarca P, Spiegel ML, Han M, Sago W, Hu-Lieskovan S, Das K, et al. Prior TKI Therapy in NSCLC EGFR-mutant patients associates with lack of response to anti-PD1 treatment. *World Conference on Lung Cancer (WCLC)* 2015.
22. Spigel DR, Schrock AB, Fabrizio D, Frampton GM, Sun J, He J, Gowen K, Johnson ML, Bauer TM, Kalemkerian GP, Raez LE, Ou SHI, Ross JS, et al. Total mutation burden (TMB) in lung cancer (LC) and relationship with response to PD-1/PD-L1 targeted therapies. *J Clin Oncol.* 2016 (Suppl 15); 34:9017.
23. Gainor JF, Shaw AT, Sequist LV, Fu X, Azzoli CG, Piotrowska Z, Huynh TG, Zhao L, Fulton L, Schultz KR,

- Howe E, Farago AF, Sullivan RJ, et al. EGFR Mutations and ALK Rearrangements Are Associated with Low Response Rates to PD-1 Pathway Blockade in Non-Small Cell Lung Cancer: A Retrospective Analysis. *Clin Cancer Res.* 2016; 22:4585–4593.
24. Lee CK, Man J, Lord S, Links M, GebSKI V, Mok T, Yang JC. Checkpoint Inhibitors in Metastatic EGFR-Mutated Non-Small Cell Lung Cancer-A Meta-Analysis. *J Thorac Oncol.* 2017; 12:403–407.
25. Casadevall D, Clavé S, Taus Á, Hardy-Werbin M, Rocha P, Lorenzo M, Menéndez S, Salido M, Albanell J, Pijuan L, Arriola E. Heterogeneity of Tumor and Immune Cell PD-L1 Expression and Lymphocyte Counts in Surgical NSCLC Samples. *Clin Lung Cancer.* 2017; 18:682–691.e5.
26. Jiménez-Sánchez A, Memon D, Pourpe S, Veeraraghavan H, Li Y, Vargas HA, Gill MB, Park KJ, Zivanovic O, Konner J, Ricca J, Zamarin D, Walther T, et al. Heterogeneous Tumor-Immune Microenvironments among Differentially Growing Metastases in an Ovarian Cancer Patient. *Cell.* 2017; 170:927–938.e20.
27. Chen Y, Wang Q, Shi B, Xu P, Hu Z, Bai L, Zhang X. Development of a sandwich ELISA for evaluating soluble PD-L1 (CD274) in human sera of different ages as well as supernatants of PD-L1+ cell lines. *Cytokine.* 2011; 56:231–238.
28. Diaz LA Jr, Bardelli A. Liquid biopsies: genotyping circulating tumor DNA. *J Clin Oncol.* 2014; 32:579–86.
29. Karlovich C, Goldman JW, Sun JM, Mann E, Sequist LV, Konopa K, Wen W, Angenendt P, Horn L, Spigel D, Soria JC, Solomon B, Camidge DR, et al. Assessment of EGFR Mutation Status in Matched Plasma and Tumor Tissue of NSCLC Patients from a Phase I Study of Rociletinib (CO-1686). *Clin Cancer Res.* 2016; 22:2386–2395.
30. Normanno N, Brown H, Haddad V, Ratcliffe M, McCormack R, Tjulandin S, Hagiwara K, Han B, Reck M. 580\_PR: Clinical and demographic features that influence EGFR mutation detection in plasma from patients (pts) with aNSCLC: The ASSESS experience. *J Thorac Oncol.* 2016 (Suppl 4); 11:S151. [https://doi.org/10.1016/S1556-0864\(16\)30323-9S1556-0864\(16\)X0004-4](https://doi.org/10.1016/S1556-0864(16)30323-9S1556-0864(16)X0004-4).
31. Wu YL, Sequist LV, Hu CP, Feng J, Lu S, Huang Y, Li W, Hou M, Schuler M, Mok T, Yamamoto N, O'Byrne K, Hirsh V, et al. EGFR mutation detection in circulating cell-free DNA of lung adenocarcinoma patients: analysis of LUX-Lung 3 and 6. *Br J Cancer.* 2017; 116:175–185.