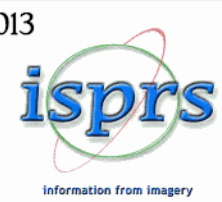


10.5194/ISPRS.ARCHIVES-XL-5-W2-555-2013

ISSN: 1682-1777



- Home | The Society | Members | Commissions | Documents | Publications | Education | Calendar | Links | News

- Publications
Archives
Volumes
Title and author search
Full-text search
Annals
ISPRS Journal
ISPRS Journal Geo-Info
ISPRS eBulletin
ISPRS Highlights
Book Series
Brochure
ISPRS Profile
Annual Reports
Related Publications
Booklets

Volume XL-5/W2, 2013

Volumes

TC V
XXIV International CIPA Symposium (Volume XL-5/W2)
2-6 September 2013, Strasbourg, France
Editor(s): P. Grussenmeyer

Author index | Keyword index

18 Jul 2013
AUTOMATIC CAMERA CALIBRATION FOR CULTURAL HERITAGE APPLICATIONS USING UNSTRUCTURED PLANAR OBJECTS
K. Adam, I. Kalisperakis, L. Grammatikopoulos, G. Karras, and E. Petsa
Int. Arch. Photogramm. Remote Sens. Spatial Inf. Sci., XL-5-W2, 1-6, https://doi.org/10.5194/isprsarchives-XL-5-W2-1-2013, 2013

18 Jul 2013
Wooden Bay Window (Rowshan) Conservation in Saudi-Hejazi Heritage Buildings
A. A. Adas
Int. Arch. Photogramm. Remote Sens. Spatial Inf. Sci., XL-5-W2, 7-11, https://doi.org/10.5194/isprsarchives-XL-5-W2-7-2013, 2013

18 Jul 2013
DEVISING A VISUAL INSPECTION SYSTEM FOR CANAL TUNNELS: PRELIMINARY STUDIES
J.-L. Albert, P. Charbonnier, P. Chavant, P. Foucher, V. Muzet, D. Prybyla, T. Perrin, P. Grussenmeyer, S. Guillemin, and M. Koeh
Int. Arch. Photogramm. Remote Sens. Spatial Inf. Sci., XL-5-W2, 13-18, https://doi.org/10.5194/isprsarchives-XL-5-W2-13-2013, 2013

18 Jul 2013
CLOSE RANGE PHOTOGRAMMETRY APPLIED TO THE DOCUMENTATION OF AN ARCHAEOLOGICAL SITE IN GAZA STRIP, PALESTINE
E. Alby, R. Elter, C. Ripoche, N. Quere, and INSA de Strasbourg
Int. Arch. Photogramm. Remote Sens. Spatial Inf. Sci., XL-5-W2, 19-24, https://doi.org/10.5194/isprsarchives-XL-5-W2-19-2013, 2013

18 Jul 2013
THE NATIONAL COMMITMENT TOWARDS CONSERVING THE HERITAGE (DOCUMENTATION OF HISTORICAL AND CULTURAL SITES IN GCC COUNTRIES)
F. AlSulaiti
Int. Arch. Photogramm. Remote Sens. Spatial Inf. Sci., XL-5-W2, 25-30, https://doi.org/10.5194/isprsarchives-XL-5-W2-25-2013, 2013

IMAGE-BASED MODELING TECHNIQUES FOR ARCHITECTURAL HERITAGE 3D DIGITALIZATION: LIMITS AND POTENTIALITIES

C. Santagati ^{a,b,*}, L. Inzerillo ^{a,c}, F. Di Paola ^{a,c}

^a IEMEST, Istituto Euro Mediterraneo di Scienza e Tecnologia, Department of Communication, Interactive Graphics and Augmented Reality, 90139 Palermo, ITALY - (cettinasantagati, laurainzerillo, francescodipaola)@iemest.eu

^b Department of Architecture, University of Catania, 95125, Catania, ITALY – cettina.santagati@dau.unict.it

^a Department of Architecture, University of Palermo, 90139 Palermo, ITALY – (fdipaola, laura.inzerillo)@unipa.it

KEY WORDS: Image-based modeling, 3D reconstruction, Computer Vision, Architectural Heritage, Laser scanning

ABSTRACT:

3D reconstruction from images has undergone a revolution in the last few years. Computer vision techniques use photographs from data set collection to rapidly build detailed 3D models. The simultaneous applications of different algorithms (*MVS*), the different techniques of image matching, feature extracting and mesh optimization are inside an active field of research in computer vision. The results are promising: the obtained models are beginning to challenge the precision of laser-based reconstructions. Among all the possibilities we can mainly distinguish desktop and web-based packages. Those last ones offer the opportunity to exploit the power of cloud computing in order to carry out a semi-automatic data processing, thus allowing the user to fulfill other tasks on its computer; whereas desktop systems employ too much processing time and hard heavy approaches. Computer vision researchers have explored many applications to verify the visual accuracy of 3D model but the approaches to verify metric accuracy are few and no one is on *Autodesk 123D Catch* applied on Architectural Heritage Documentation. Our approach to this challenging problem is to compare the 3D models by *Autodesk 123D Catch* and 3D models by terrestrial LIDAR considering different object size, from the detail (capitals, moldings, bases) to large scale buildings for practitioner purpose.

1. INTRODUCTION

The diffusion of Image-based 3D modeling techniques, through *free, low cost e open source* software, has increased drastically in the past few years, especially in the domain of *Cultural Heritage (Architecture, Archeology, Urban planning)*.

Some software process 3D reconstruction using only structured photos data set (*ARC3D, 123D Catch, Hyp3D, my3DScanner*) and some other software use both structured and unstructured photos data set for example downloaded from Flirck.com (*VisualSfM, PhotoSynth*). Obviously, this approach has been developed to be used by not expert operators to view images and browse photo collections through the Structure from Motion (SfM) techniques. Furthermore, some algorithms can be downloaded; thus, it is possible to manage them in order to overcome the limits identified during the application (Vu *et al.*, 2009). Other software works like a real “black box” (Nguyen *et al.*, 2012) whose algorithms are secrets and the user cannot understand the “formula” that allows to get the outcome. Nevertheless, web-based software (*ARC3D, 123D Catch, Hyp3D, my3DScanner*) offer another opportunity: they use the power of cloud computing to carry out a semi-automatic data processing instead of considerably slowing-down the computer during data processing as desktop systems do. In this paper we focus on architectural heritage digitalization by using *123D Catch by Autodesk*, one of the more used web based packages. Among all available web based software (*ARC3D, 123D Catch, Hyp3D, my3DScanner*) we chose *Catch* for the easiness of use, the visual quality of the reconstructed scene and the possibility

to interact with and develop the results (by manual stitching of homologous points on triplets of images). Furthermore, *Catch* 3D mesh is suitable for all 3D modeling software. *123D Catch* by Autodesk is a free (at present time) web-based service in beta release that overcomes the previous Autodesk’s Photofly technology preview project launched in the summer of 2010 using technology developed by Realviz (now *Acute 3D*). Our goal is to identify the methodology for using the software and to verify and demonstrate its metric reliability. The aim of this work is to give a simple guide to the *practitioner* so that he will be able to work in architectural survey field, without using expensive technologies and software and without having an extremely specific expertise. Our applications have been addressed to small and large scale buildings in the field of architectural heritage. We deeply investigated on metric reliability of *123D Catch* models comparing them with terrestrial laser scanner acquisitions or reliable Ground Control Points (GCP), on the surfaces reconstruction quality and on the detail quality in relation with the number of images and their resolution. After a description of related work, we describe the correct use of the software and demonstrate its visual and metric accuracy.

1.1 Previous work

The main part of the studies aimed at testing and exploring *123D Catch* potentialities and limits is addressed to digitalization of little objects (Nguyen *et al.*, 2012), of archaeological finds such as fragments and furnishings (Kersten, Lindstaed, 2012), small archaeological site parts (Lo

* Corresponding author. This is useful to know for communication with the appropriate person in cases with more than one author.

Brutto, Meli, 2012; Dellepiane et al., 2013) and statues, such as the excellent outcomes obtained by Kestern (Kersten, Lindstaed, 2012) on Moai statues of Easter Island. Instead, in architectural field there is a lack of systematic studies, Kestern made some applications on very simple buildings and Manferdini (Manferdini, Galassi, 2013) worked mainly on *123D Catch* verifications. Hence, rather than getting a comparison between *123D Catch* and other image based modeling tools, we consider more useful investigate on the *123D Catch* architectonic mesh metric and visual accuracy (Santagati, Inzerillo, 2013) in order to fill this gape and provide some methodological directions.

2. 123D CATCH: METHODOLOGICAL APPROACH

Among all the web-services packages actually available, *123D Catch* by Autodesk is the only one that allows to improve the result of the 3D scene reconstruction through the manual stitching of homologous points on triplets of images and the re-submission of the scene to the service.

The used approach underlying *123D Catch* technology is well described in (Vu, H-H. et al., 2009).

Exploiting the photogrammetric approach and the algorithms of *Computer Vision*, *123D Catch* is able to reconstruct internal parameters of the digital camera and the position in space of the homologous points from a number of correspondences between sequences of photographic images, suitably taken. Indeed, through the correspondence pixel-pixel, the 3D coordinates of all points of the scene are found and the polygonal model is reconstructed.

The main steps to use *123D Catch* are to: - *Capture* a photographic sequence of an object in order that the angle between one shot and the other is about 5-10 degree and the overlapping is about 70%; - use the iPhone, iPad, web, or desktop app to *upload* the photos to the Autodesk cloud (user can decide whether to wait the 3D reconstruction or to be advised by email); - *Improve* the results by manual *stitching* of homologous points on triplets of images and submit again the scene to the cloud; - *Create a video*, share with others, or even fabricate your project with 123D's 3D printing or laser cutting services. Furthermore, for a use in cultural heritage visualization field it is necessary to scale and post-process the obtained model to fix all the imperfections (noise and holes) in mesh quality, also by using open source software such as *Meshlab* (Cignoni, P. et al., 2008). All those advantages cut down the costs not only in terms of required equipment but also in terms of hours/man, hours/machine you have to consider when you start a digitalization project. The reconstruction process begins by estimating parameters for the *sequence* of data set photos. The sequence is very important to reach satisfactory outcomes. In fact if you change the sequence also the result changes. The pictures must be taken according to a path of continuity around the object and their submission on *Catch* must be the same. The right sequence to take the pictures is well shown in figures 2-3.

As before said, it is necessary to capture a photo data set sequence of an object in order that the angle between one shot and the other is about 5-10 degree and the *overlapping* is about 70%. This is a strong condition to ensure a good result. So if your architecture building is hampered by bottlenecks it is not possible to create a cluster of good structured pictures. Another strong condition is that it is necessary to frame the building in its *entirety*, therefore, be at a reasonable distance.

This excludes the possibility of performing calculations on buildings that are located in narrow streets or which have obstacles (such as statues, trees, etc.) that prevent the shot distance. In figure 4 we demonstrate that *123D Catch* result is not useable. Given a set of matching images, the goal of this stage is to recover simultaneously the geometry of the scene and

the *Structure for Motion* (SfM) (Furukawa and Ponce, 2007; Remondino, et al., 2012; Snavely, 2008; Wu, 2011). SfM includes the extrinsic (position, orientation) and intrinsic parameters of the camera for the captured images. *123D Catch* processes only photos taken by a single camera.



Figure 1. Datasets used for visual accuracy tests

	Number of images	Stitching
Architectural element	33	2
Civil building (A)	65	6
Civil building (B)	47	7

Table 1. Datasets used for visual accuracy tests

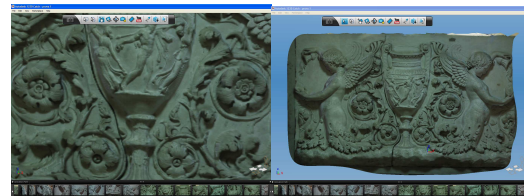


Figure 2: The photographic sequence needed for the acquisition of an architectural element.

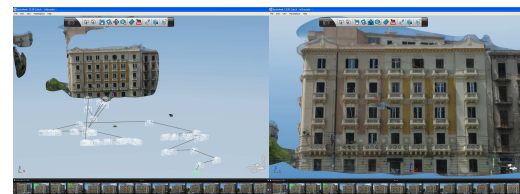


Figure 3: *123D Catch*: civil building (A) in Palermo

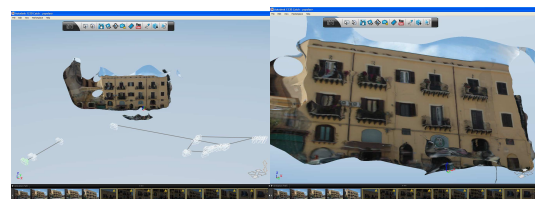


Figure 4: *123D Catch*: civil building in Palermo

In case of change of lens or camera gear, or use of wide-angle, or use images downloaded from the web, *Catch's* algorithm is not able to process the mesh because it does not recognize the homologous points. Photos dataset have to follow the parameters shown in the previous section. The amount of pictures to take is relative to the object to be processed and the amount of detail to provide. *Catch* allows to choose an output quality for mesh. There are three choices: the *mobile* one which is fast, suitable for viewing on mobile devices; the *standard* one -which is the recommended one from *Catch*- with high resolution textured mesh and it is the best for the visualization on the desktop; the *maximum* one which is a very high density mesh, suitable for manipulating in external applications. However, the resolution quality carried out from the *standard*

output quality mesh is very approximate if compared with the *maximum* one.

3. METRIC ACCURACY

As stated in the introduction, our methodological approach is focused on testing *123D Catch* on different architectural objects to verify its reliability and give to *practitioners* some milestone on which to build. Thus, our chosen case studies span from architectural detail to large scale architecture. For testing we chose an architectural detail and the façade of the church San Nicola l’Arena in Catania and the Auteri Chapel in Catania. For metric comparison we used both reliable direct surveys and point clouds carried out by *TOF* (Time of Flight) *laser scanner 3000 HDS* by *Leica Geostystem* of Laboratory of Architectural Photogrammetry and Survey “Luigi Andreozzi” (University of Catania).



Figure 5: Datasets used for metric accuracy tests

3D model made in *123D Catch* has been exported in *obj* format. Metric comparison has been carried out in *Meshlab*, able to scale, align and process both point clouds and meshes. The alignment has been carried out *glueing* and *scaling Catch* mesh on laser mesh using ICP algorithm. Alignment outcomes between two meshes have been verified applying *Hausdorff distance* filter and visualized through *vertex quality* filter. The achievements are shown in a red-green-blue scale, where red means good and blue means bad. Furthermore, we carried out a series of vertical and horizontal cross-sections on the two aligned meshes in *JRC Reconstructor* environment to quantify/visualize better the gaps between the two meshes. Dealing with Auteri Chapel the comparison has been carried out in CAD environment overlapping the cross-section created in *JRC Reconstructor* on CAD drawings.

3.1 Entire architectural object

In this section, we will get *123D Catch* 3D model of an entire architectural object. The third strong condition, just treated on section 2.2, has reduced our choice on architectural building. It was really difficult to find a building isolated from the context and proportionate to the road so that it could be photographed entirely. We tested *Catch* on a little chapel in Catania: Auteri Chapel. We chose this architectural building for its simple cylindrical shape.

Entire architectural object	Auteri Chapel
Dimension of the object	4,20x5,14 m
Number of images	40
Resolution	4 Mpixel
<i>123D Catch</i> mesh	590,869 triangles 306,001 vertices

Table 2. *Auteri Chapel* dataset

In Table 2 you get all information you need about *Auteri Chapel* dataset: dimension of the object, mesh quality, number of vertices and triangles (faces).

123D Catch 3D model visual accuracy is *very good* apart from the covering (this problem is because we couldn’t take picture of it). Figure 6 shows the excellent sharpness of cylindrical surface both of the building and of niches and columns.



Figure 6: *Auteri Chapel 123D Catch* model, on the right smooth visualization

As previously verified, *123D Catch* 3D reconstruction encountered some problems for the lacking of continuities of images in dataset, due obstacles. For metric accuracy test we used horizontal and vertical cross sections compared with Ground Control Points (GCP) carried out by a reliable direct survey. Therefore, *123D Catch* model was scaled and referred for overlapping to direct survey drawings. Figure 7 shows metric accuracy evaluation considering two significant horizontal cross-sections: one at 0.75 and the other 1.50 m. Except for the areas where 3D reconstruction is not geometrically exact, the gaps are about of 0.01m, thus confirming what previously tested.

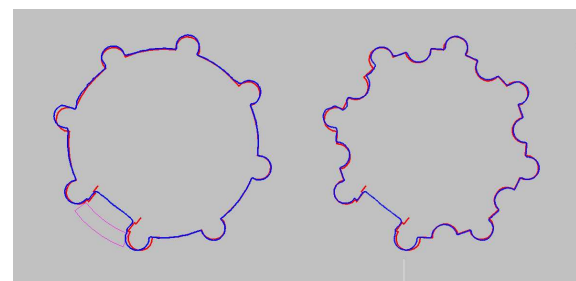


Figure 7: *Auteri Chapel* reconstruction error evaluation on horizontal profiles: yellow *123D Catch* model, red GCP survey

3.2 Large scale architecture

3.2.1 Part of the lateral entrance: We chose a part of the lateral entrance of the church of San Nicola l’Arena in Catania. Table 3 summarizes all the information about dimension, resolution, images number and information on the mesh quality in terms of number of vertices and triangles (faces). The shots have been carried out by a *Coolpix L22*. The dataset includes 20 images and its visual appearance is very good. We observe that *123D Catch* model is more detailed than point cloud one. The outcomes of the comparison denote an *very good* overlap. The average error is 0.0125m. Furthermore, both the horizontal and vertical cross sections carried out with a step of 0.05 m reveal a *very good* quality of *123D Catch* model (figure 10).

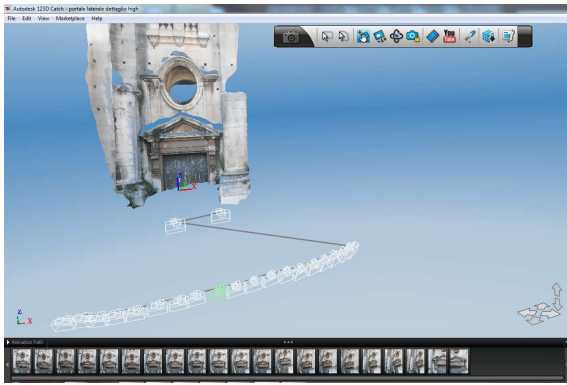


Figure 8: Part of the lateral entrance 123D Catch model

Architectural element	Part of lateral entrance
Dimension of the object	8x12 m
Number of images	21
Resolution	8,5 Mpixel
123D Catch mesh	1,768,595 triangles 886,705 vertices
Laser scan point cloud	169,363 vertices
Average error	0.0125 m

Table 3. Part of lateral entrance dataset

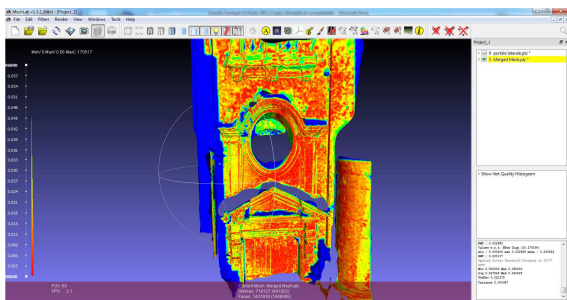


Figure 9: Part of the lateral entrance mesh alignment error visual evaluation histogram: blue (good) red (bad)

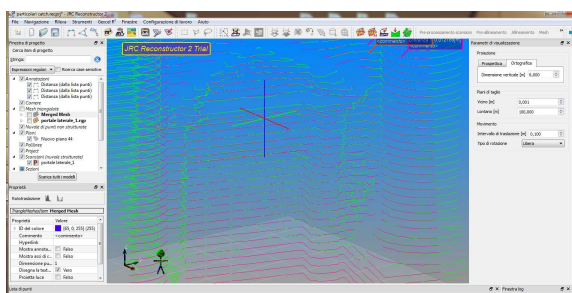


Figure 10: Part of the lateral entrance mesh alignment error evaluation error through horizontal cross sections

3.2.2 Façade: To get the large scale architectural building test, we chose the monumental façade of the church of *San Nicola l’Arena* in Catania of 47x25m. The shots have been carried out by a *Coolpix L22*. Table 4 denotes all the information regarding dataset dimension, resolution and images number.

Dealing with a large scale architecture, we verified *how* and *if* the images number affected both *visual accuracy* and *metric*

accuracy of 3D reconstruction. Hence, we got two datasets with 74 and 136 photos. Here we report the results of 136 photos dataset. Otherwise in (Santagati, Inzerillo, 2013) we verified an error of 0.10 on the model carried out by 74 photos dataset.

Table 4 reveals all resolution, dimension of the object, images number information. During *Catch* processing it was necessary to stitch manually 50 images to sketch in 86 automatically processed.

Because of terrestrial laser scanner mesh heaviness, we carried out a light mesh in *JRC Reconstructor* preserving all sharpen edges. Then we got meshes alignment. Whereas, the comparison has been carried out with original point cloud mesh.

Large Scale Architecture	San Nicola
Dimension of the object	47x25 m
Number of images	136
Resolution	8.5 Mpixel
123D Catch mesh	2,481,252 triangles 1,261,619 vertices
Laser scan point cloud	2,801,344 vertices
Average error	0.014

Table 4. *San Nicola* dataset

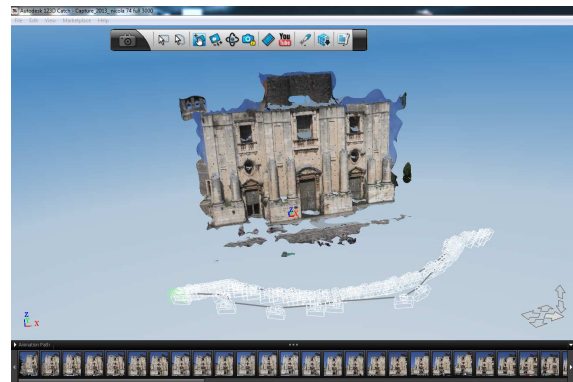


Figure 11: *San Nicola* façade 123D Catch model

The comparison outcomes reveal a *very good* overlap. The average error is 0.03 m. In the vertex quality evaluation some of the blue zone are in correspondence of lacking in the laser scan mesh. Hence, if we consider that used terrestrial laser scanner has an accuracy of 0.006, we still assert that on large-scale architecture we get *good* outcomes. Nevertheless, practitioner should attention all the erroneous reconstruction carried out by *Catch*. Furthermore, both horizontal and vertical cross sections, carried out with a step of 0.50 m, denote *123D Catch* model quality.

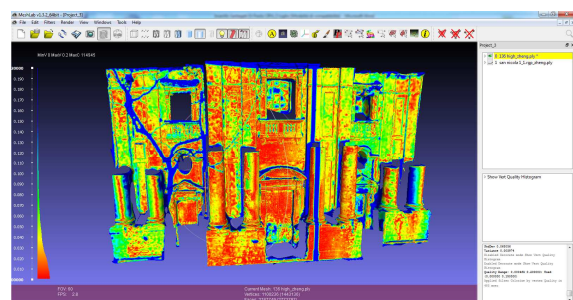


Figure 12: *San Nicola* façade mesh alignment error evaluation histogram: red (good) blue (bad)

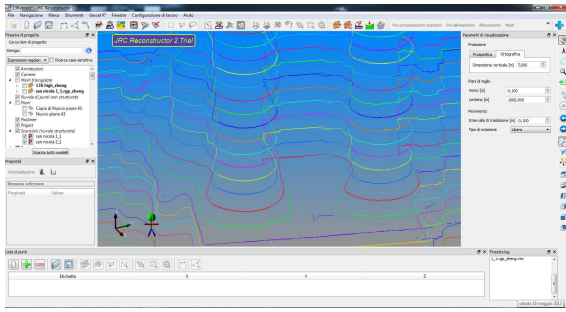


Figure 13: *San Nicola* façade mesh alignment error evaluation through horizontal cross sections

3.2.3 Input Image Resolution: The last test we carried out deals with the incidence of image resolution on metric accuracy. We worked on *San Nicola* datasets considering four different datasets accordingly with images number and resolution as shown in Table 5.

San Nicola		
136 photos		
1050x1400 pixel	502,389 faces	251,915 vertices
2550x3400 pixel	2,577,777 faces	1,294,529 vertices

Table 5. Datasets for image resolution tests

Since in the previous section we demonstrated that quality of mesh affects the accuracy of metric model, it seemed sufficient to perform just only a visual comparative analysis.

The comparisons were made in *Meshlab* visualizing the meshes both in textured and in smooth mode.

The presence of *holes* has been considered of secondary importance compared to the quality of mesh's graphic detail.

In figure 14 are clearly visible some common 3D reconstruction deficiencies: holes and lack of sharpness.

The latter is more important to carry out a high visual and metric mesh accuracy.

123D Catch manages leaner, faster and reliable a photos dataset not so much wide. On the other side a wide range of photos dataset guarantees more resolution, sharpness and geometry accuracy, especially in details.

123D Catch tends to close automatically mesh holes without considering the actual geometry of the object. The reliability of the holes closed automatically by *Catch* is not acceptable.

We can conclude that it is preferable to give a photo dataset with *high resolution* images.

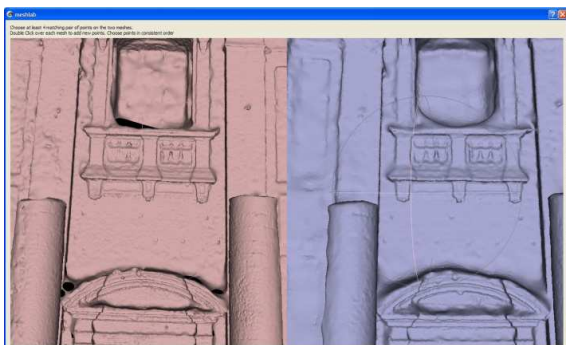


Figure 14: *San Nicola* 136 dataset – on the left High Resolution photos 3D model, on the right Low Resolution photos 3D model

4. CONCLUSIONS AND FUTURE WORKS

We described the overall design of image-based reconstruction algorithms, and evaluated a number of 3D reconstruction models. We can conclude that *123D Catch* is an *excellent* tool for Image Based Modeling. However, to give a reliable overview, we have noted *Catch* tips, advantages and disadvantages.

Suggestions:

Metric accuracy was significantly affected by mesh quality. Therefore, we must apply the two parameters that control mesh quality, namely: resolution of dataset and number of images. The number of pictures must be appropriately selected depending on size and level of detail and according to parameters that regulate photogrammetry. For large scale Architectures is better produce your photo datasets as large as possible to ensure a metric accuracy of a few centimeters.

Advantages:

- Low processing times;
- Processing on cloud;
- Metric accuracy for statues, work of arts, archeological and architectural details/elements applications is of the order of mm.
- Metric accuracy for medium scale architectural buildings applications is of the order of 1-2 cm
- Metric accuracy for large scale architectural buildings applications is of the order of 1-2 cm
- In order to obtain processing reliable according to metric accuracy, it is necessary to use cameras with a resolution between 6-12 Mpixel. Therefore, it is possible to use non professional cameras without specific lens.

All those advantages cut down the costs not only in terms of required equipment but also in terms of hours/man, hours/machine you have to consider when you start a 3D digitalization project. As a matter of fact, when you manage to plan a laser scanner project, all those ratios affect very weightily on the intervention.

Disadvantages:

- Photos dataset must be structured.
- The building or the object to capture should be shot in its entirety. *123D Catch* is not able to manage the overlapping between two frames in height.

This latter condition *strongly limits* the use of this tools in several architectural applications. Almost of time, you are not in the optimal condition to capture a good photo dataset.

Practitioner needs to have as much as possible information on the entire architectural building, to carry out horizontal and vertical cross-sections, elevations, etc, for its professional activity.

Since our study is addressed to verify *123D Catch*, giving a guide to practitioner to use such a powerful low cost tool, we can assume that: *even though visual and metric accuracy are excellent, nevertheless, the need to capture the building in its entirety, considerably reduces the possible case studies, and then, a full use by practitioner.*

Otherwise, it's an *excellent* tools for other application fields such as: researcher investigations; archeological survey; museums visual art collections survey; architectural elements survey.

123D Catch visual and metric accuracy and reliability testing on both the small and on a large scale was a critical step, so far lacking in literature.

The achieved outcomes are promising. Nevertheless, among some issues, that still remain open, we suggest:

- Comparison on the same datasets with other available SfM tools both on line and desktop;
- Possibility of integrating different SfM packages;
- Data mining of all professional-technical representation such as orthophotos, profiles, etc;
- Possibility of use this tool for integrating lacking in laser scan point clouds without losing metric accuracy.

5. REFERENCES

- Agarwal, S. (et al.), 2010. Reconstructing Rome. *Computer*, 43 (6), pp. 40-47
- Bandiera A. (et al.), 2011. Nascita ed utilizzo delle tecniche digitali di 3D imaging, modellazione e visualizzazione per l'architettura e i beni culturali. *Ikhmos*, Lombardi editore, pp. 81-134
- Casu P., Pisu C., (2013). *Photo-modeling and cloud computing. applications in the survey of late gothic architectural elements*. ISPRS Archives – Volume XL-5/W1, 2013. pp 43-50
- Cignoni, P. (et al.), 2008. *MeshLab: an Open-Source Mesh Processing Tool*, Sixth Eurographics Italian Chapter Conference, pp. 129-136
- Fratu de Balestrini, E., Guerra, F., 2011. New instruments for survey: on line softwares for 3d reconstruction from images. In: *The International Archives of the Photogrammetry, Remote Sensing and Spatial Information Sciences, XXXVIII-5/W16*, pp. 545- 552
- Dellepiane (et al), 2013. *Archeological excavation monitoring using dense stereo matching techniques*. *Journal of Cultural Heritage*, in press.
- Furukawa, Y., Ponce, J., 2007. *Accurate, Dense, and Robust Multi-View Stereopsis*, IEEE Computer Society Conference on Computer Vision and Pattern Recognition, July 2007.
- Furukawa, Y. (et al.), 2010. *Towards Internet-scale Multi-view Stereo*, IEEE Computer Society Conference on Computer Vision and Pattern Recognition, July 2010
- Galizia M., Santagati C., 2012. *Low-cost image-based modeling techniques for archaeological heritage digitalization: more than just a good tool for 3D visualization?*, Proceedings of ARQUEOLÓGICA 2.0, Seville, Spain, 20-22 June 2012
- Kersten, Th. (et al.), 2012. Automatische 3D-Objektrekonstruktion aus unstrukturierten digitalen Bilddaten für Anwendungen in Architektur, Denkmalpflege und Archäologie. *Publikationen der Deutschen Gesellschaft für Photogrammetrie, Fernerkundung und Geoinformation*, 21, pp. 137-148
- Kersten, Th., Stallmann, D., 2012. Automatic texture mapping of architectural and archaeological 3d models. In: *The International Archives of the Photogrammetry, Remote Sensing and Spatial Information Sciences, XXXIX-B5*, 273-278
- Kersten, Th., Lindstaedt, M., 2012. *Image-Based Low-Cost Systems For Automatic 3d Recording And Modelling Of Archaeological Finds And Objects*, M. Ioannides, D. Fritsch, J. Leissner, R. Davies, F. Remondino, R. Caffo (Eds): EuroMed 2012, Progress In Cultural Heritage Preservation, LNCS 7616, Springer-Verlag Berlin Heidelberg 2012, Pp 1-10
- Lo Brutto M., Meli, P., 2012. Computer vision tools for 3d modelling in archaeology, *International Journal of Heritage in the Digital Era*, Volume 1, Supplement , pp 1-6
- Manferdini, A.M, Galassi, M., (2013). *Assessments for 3d reconstructions of cultural heritage using digital technologies*. The International Archives of the Photogrammetry, Remote Sensing and Spatial Information Sciences, XL-5/W1, pp 167-174.
- Nguyen, H.M., (et al.), 2012. *3D Models from the Black Box: Investigating the Current State of Image-Based Modeling*. Proceedings of the 20th International Conference on Computer Graphics, Visualization and Computer Vision (WSCG 2012), Pilsen, Czech Republic, June 25-28, 2012
- Pierrot-Deseilligny, M. (et al.), 2011. *Automated image-based procedures for accurate artifacts 3D modeling and orthoimage generation*, Proc. CIPA, 2011
- Remondino, F. (et al.), 2012. *Low-Cost and Open-Source Solutions for Automated Image Orientation—A Critical Overview*, M. Ioannides, D. Fritsch, J. Leissner, R. Davies, F. Remondino, R. Caffo (Ed.): EuroMed 2012, Progress In Cultural Heritage Preservation, LNCS 7616, Springer-Verlag Berlin Heidelberg 2012, 40-54
- Santagati, C. 2006. “L'azzurro del cielo”. *Un polo museale tra arte, architettura, natura nel cimitero di Catania*, *Documenti DAU n. 31*, Edizioni Caracol, Palermo.
- Santagati, C., Inzerillo, L., (2013). *123D Catch: efficiency, accuracy, constraints and limitations in architectural heritage field*. *International Journal of Heritage in Digital Era*, in press.
- Snavey, N. (et al) 2006. Photo tourism: Exploring photo collections in 3D. *ACM Transactions on Graphics*, 25(3):835–846, 2006.
- Snavey, N., (et al) 2008. Modeling the World from Internet Photo Collections. *International Journal of Computer Vision*, 80(2), pp. 189-210
- Vergauwen, M., Van Gool, L., 2006. Web-based 3D Reconstruction Service. *Machine Vision and Applications* 17, pp. 411–426
- Vu, H-H (et al.), 2009. Towards high-resolution large-scale multi-view stereo. In: *IEEE Computer Society Conference on Computer Vision and Pattern Recognition, July 2009*
- Wang Y F. A Comparison Study of Five 3D Modelling Systems Based on the SfM Principles. Technical Report, Visualsize Inc. TR 2011-01, Sept 8: 1-30
- Wu, C., 2011. VisualSFM : A Visual Structure from Motion System <http://homes.cs.washington.edu/~ccwu/vsfm/> (2011)
- Wu C. (et al), 2011. *Multicore Bundle Adjustment*. In: IEEE Computer Society Conference on Computer Vision and Pattern Recognition 2011.

6. ACKNOWLEDGEMENTS

Authors would like to thanks Prof. Marco Gaiani and Doct. Zheng Sun for the good advices and the help during this work.