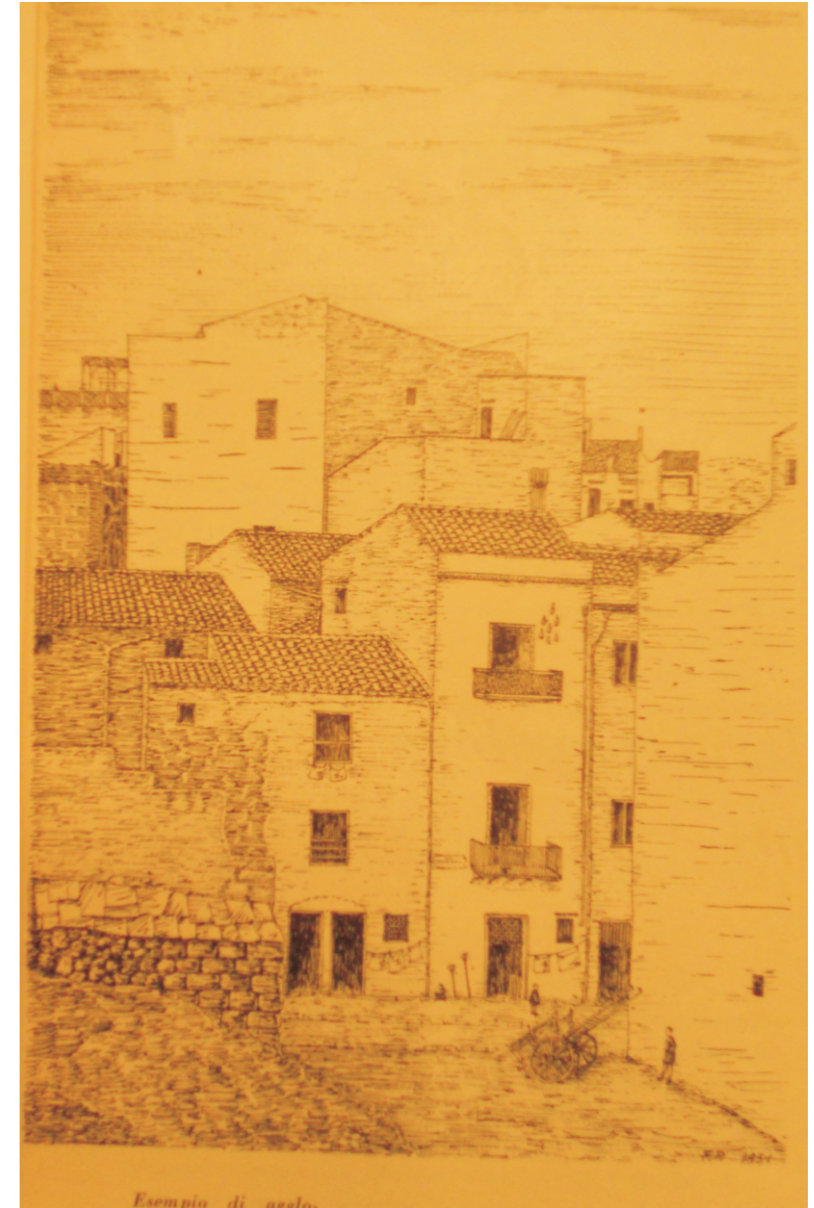
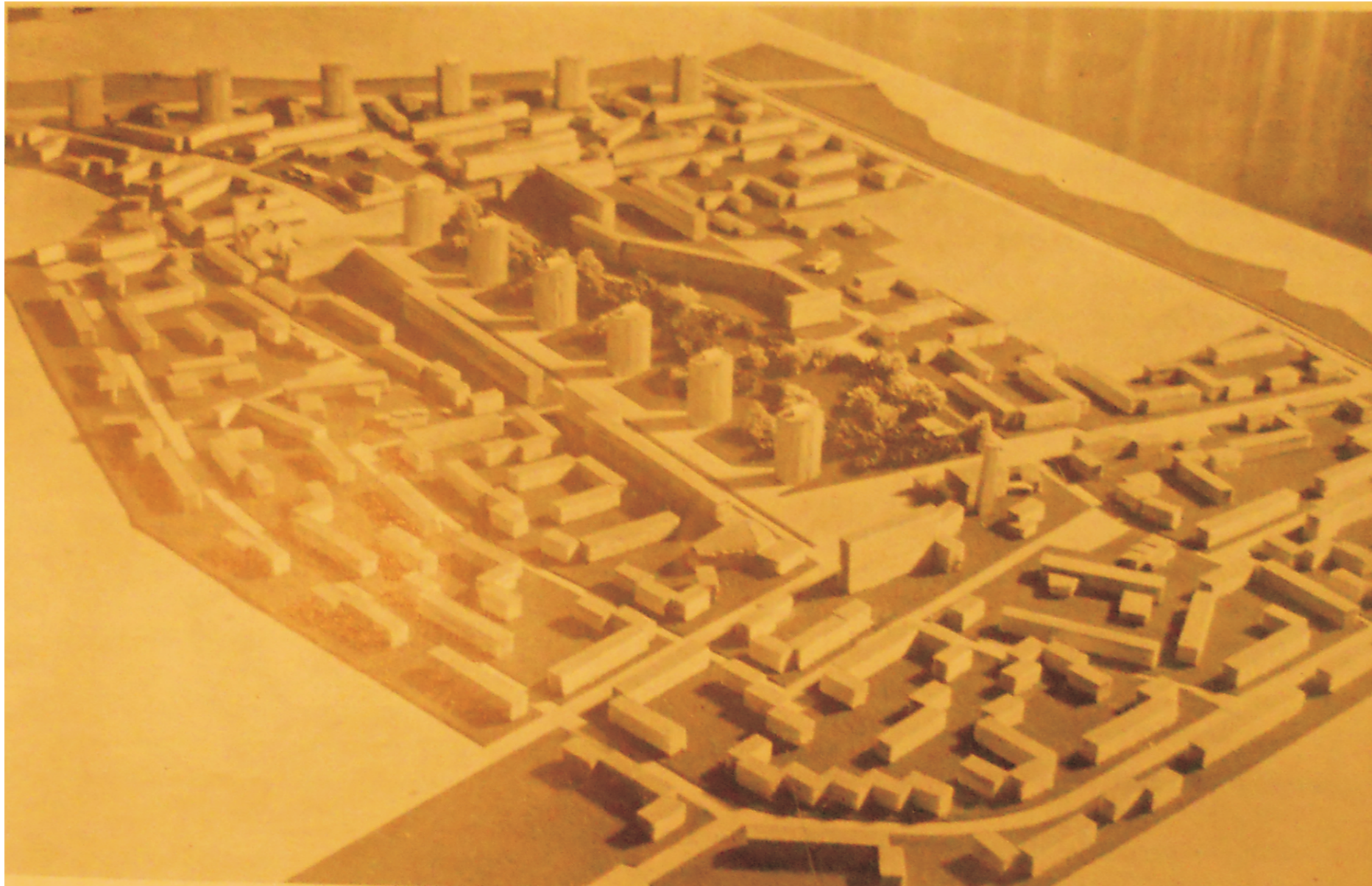
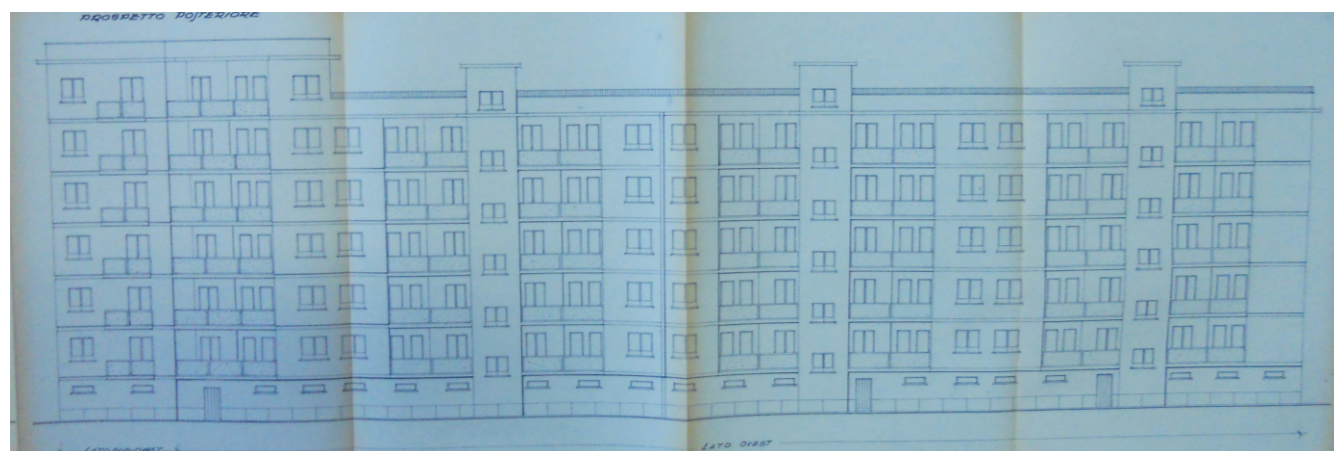
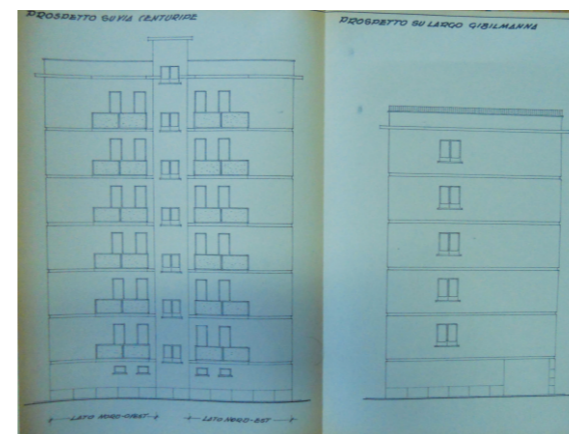
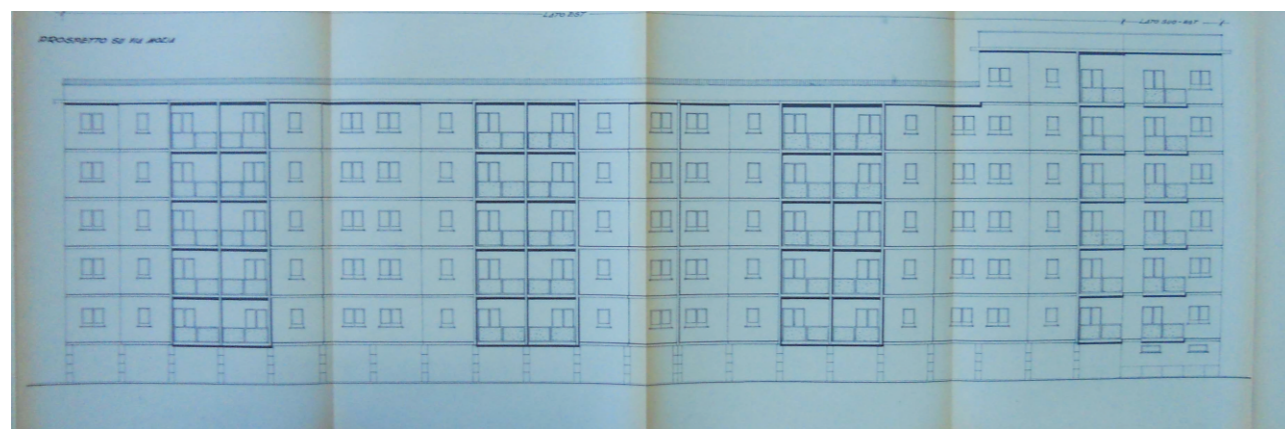
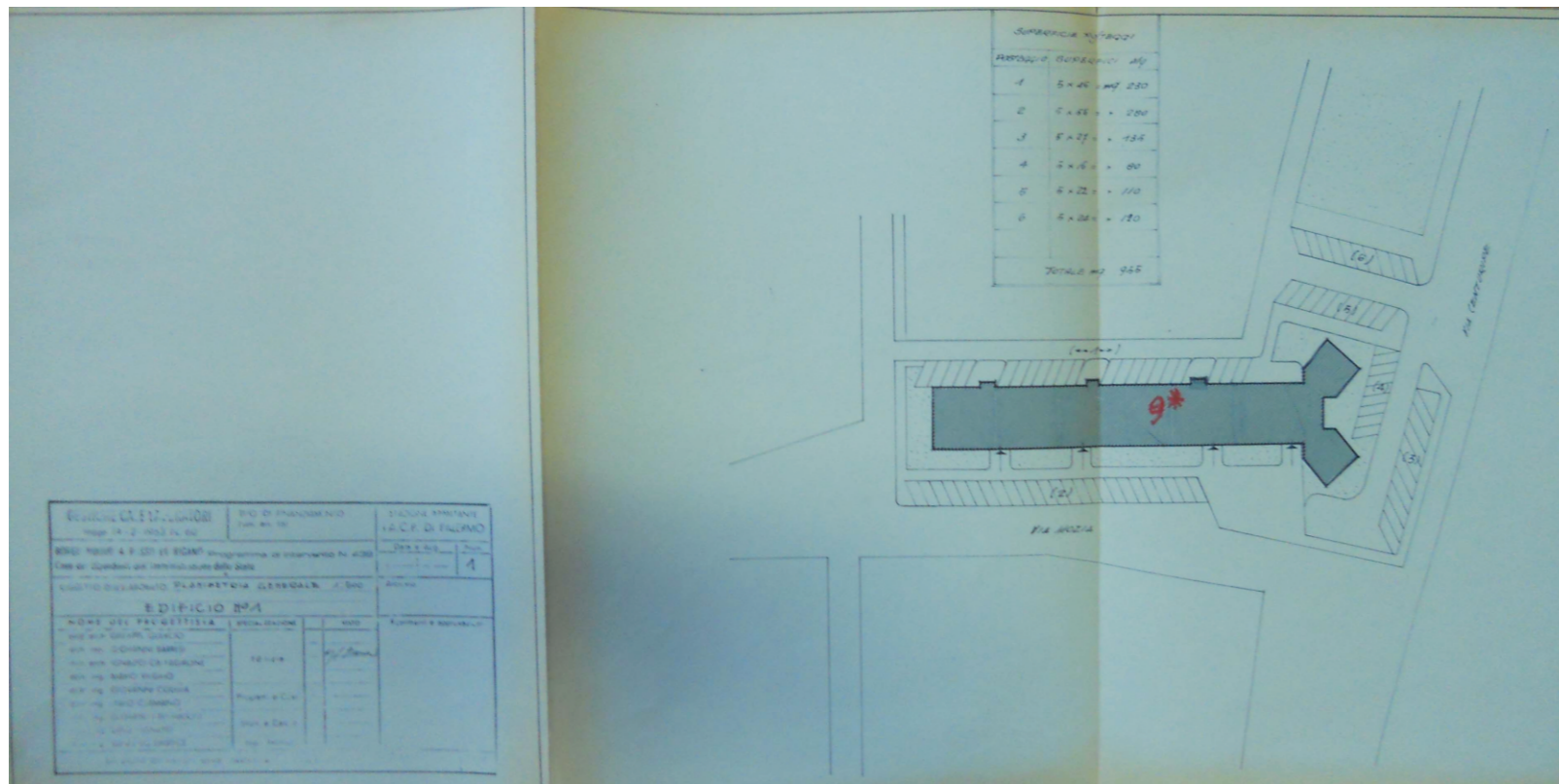




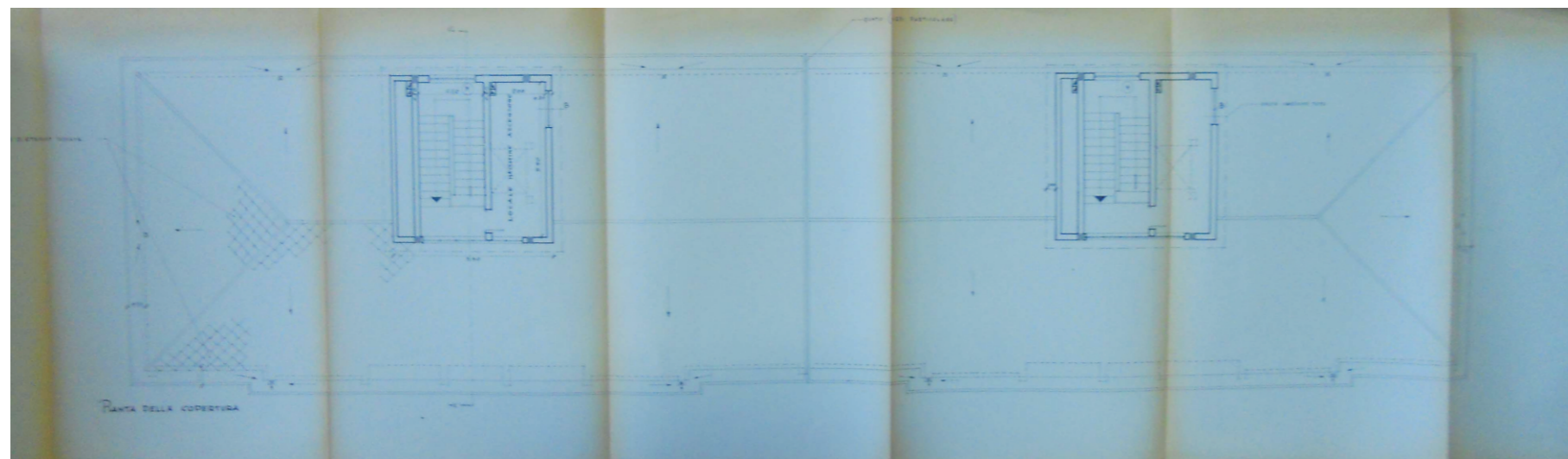
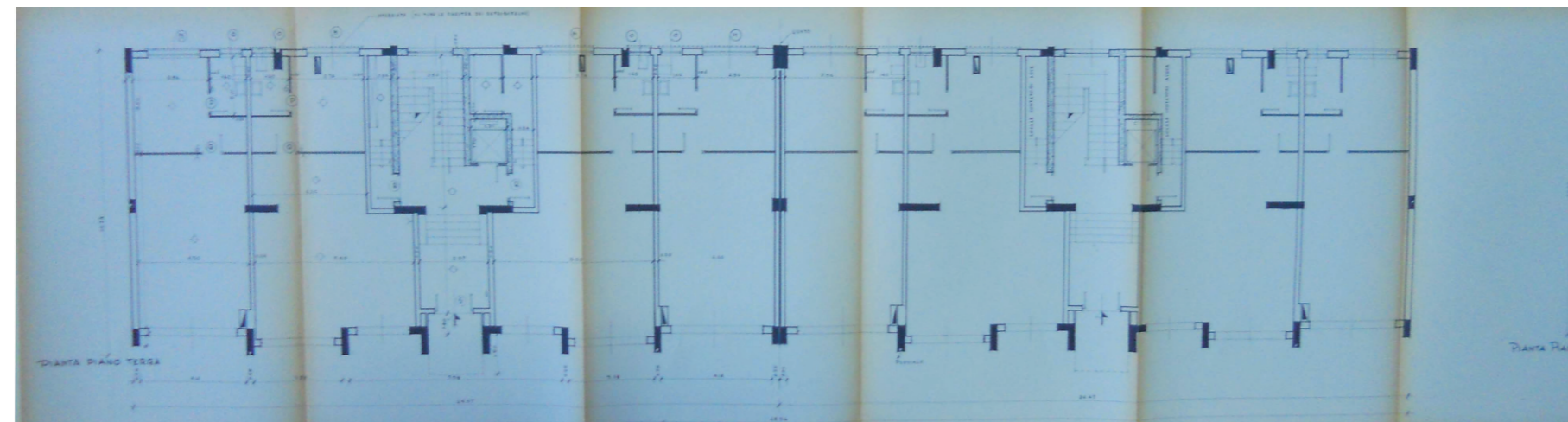
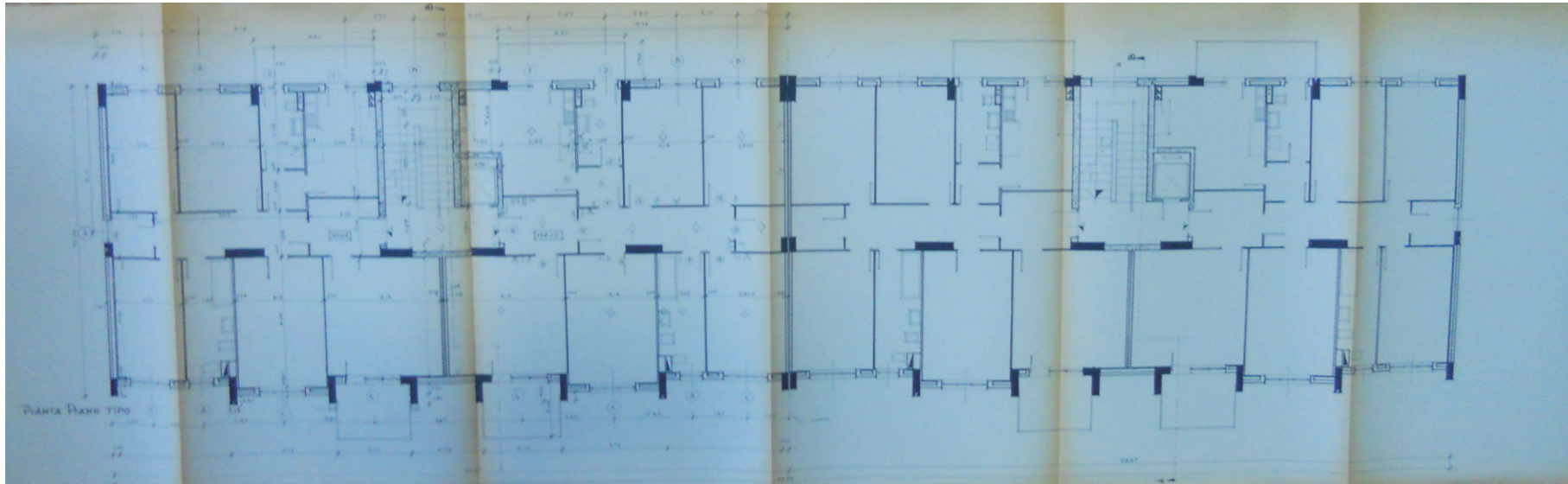
1956-83 QUARTIERE BORGO NUOVO



1956-83 QUARTIERE BORGNO NUOVO
*Plastico del quartiere ed "esempio di agglomerato caotico al rione
ex Borgo Nuovo della vecchia Palermo". Schizzo di Felice Palumbo
Da «Casa Nostra» anno VIII, n. 75, giugno 1958*



1956-83 QUARTIERE BORGO NUOVO
Edificio n. 1
Archivio IACP di Palermo



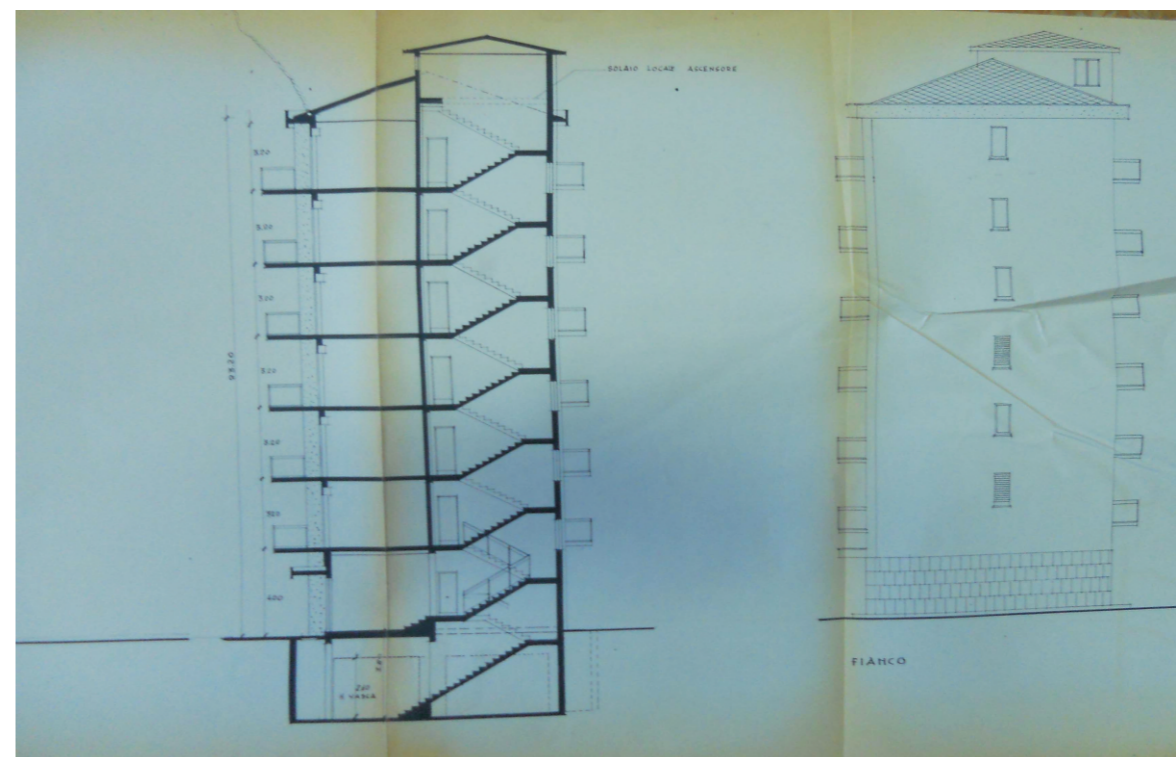
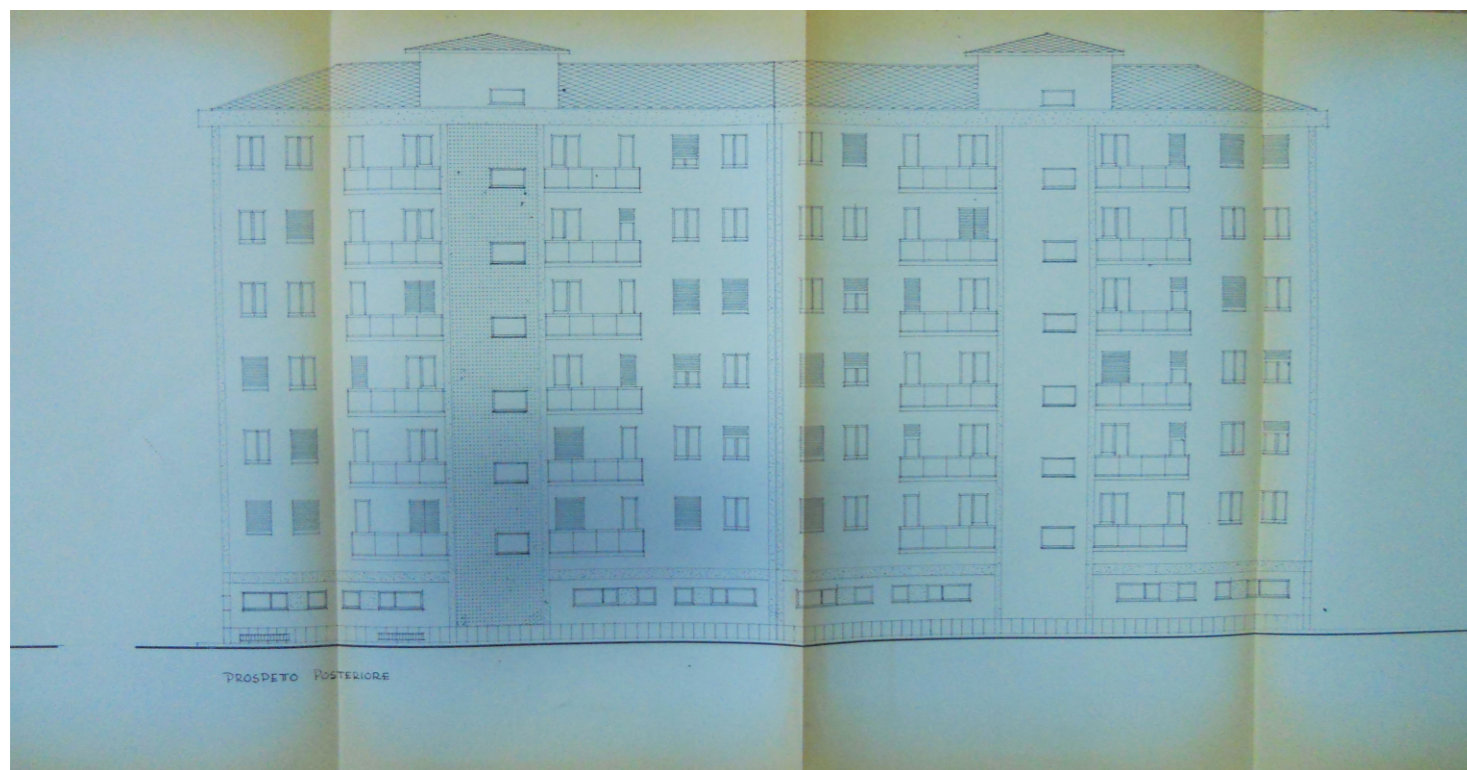
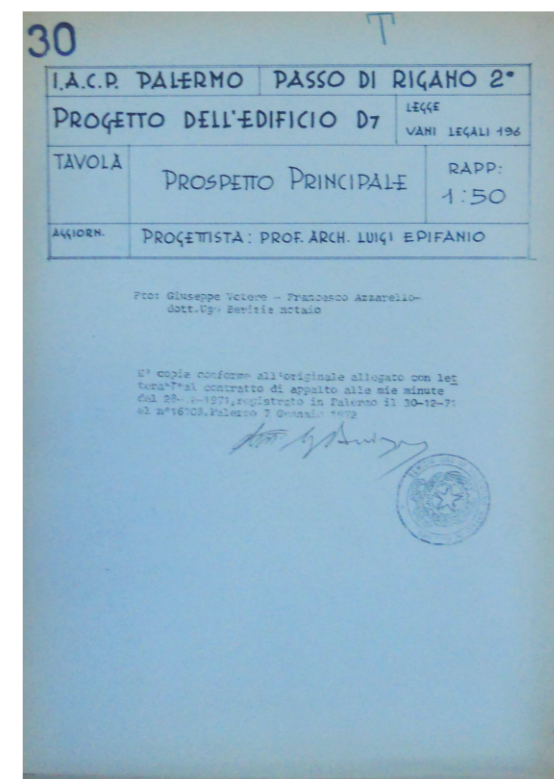
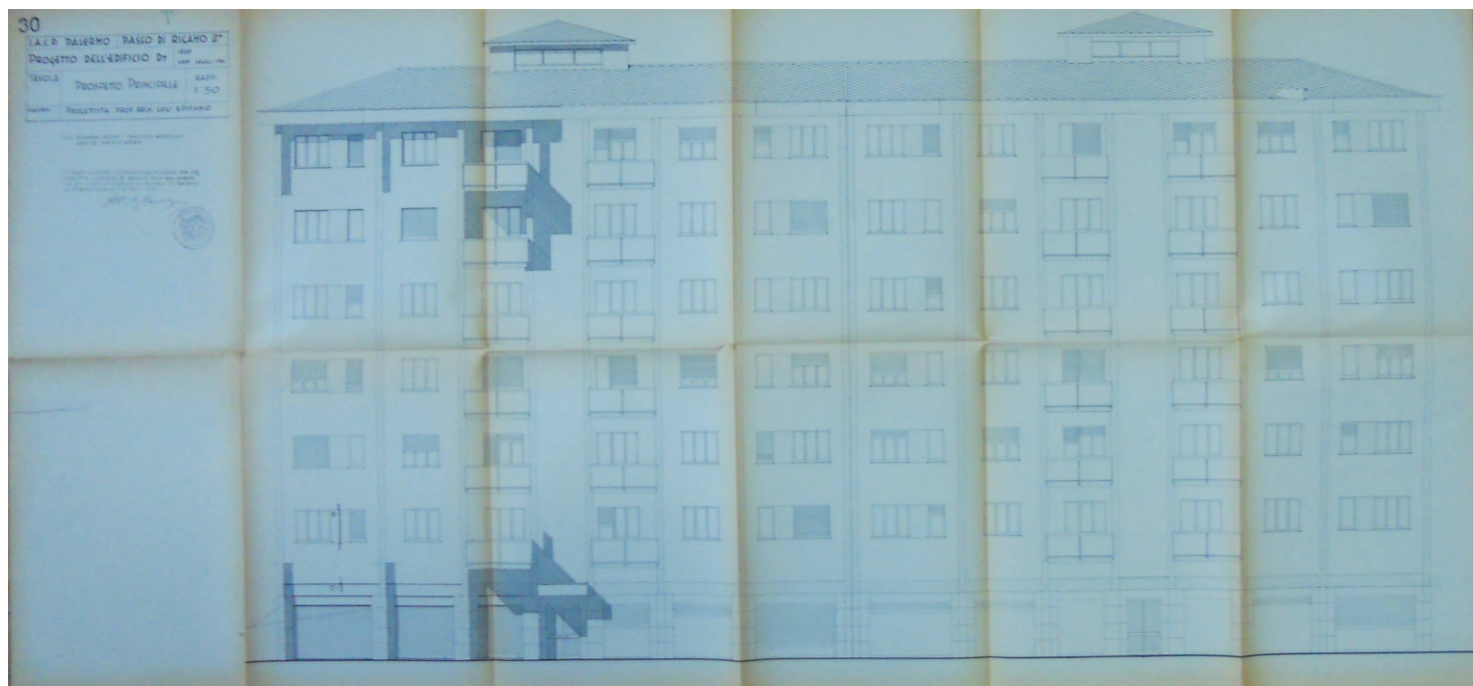
29 5

I.A.C.P. PALERMO		PASSO DI RIGANO 2°	
PROGETTO DELL'EDIFICIO D7		LEGG. VANI LEGALI 1966	
TAVOLA	PIANTA PIANO TERRA PIANTA PIANO TIPO PIANTA DELLA COPERTURA	RAPP. 1:50	
AGGIORN.	PROGETTISTA: PROF. ARCH. LUIGI EPIFANIO		

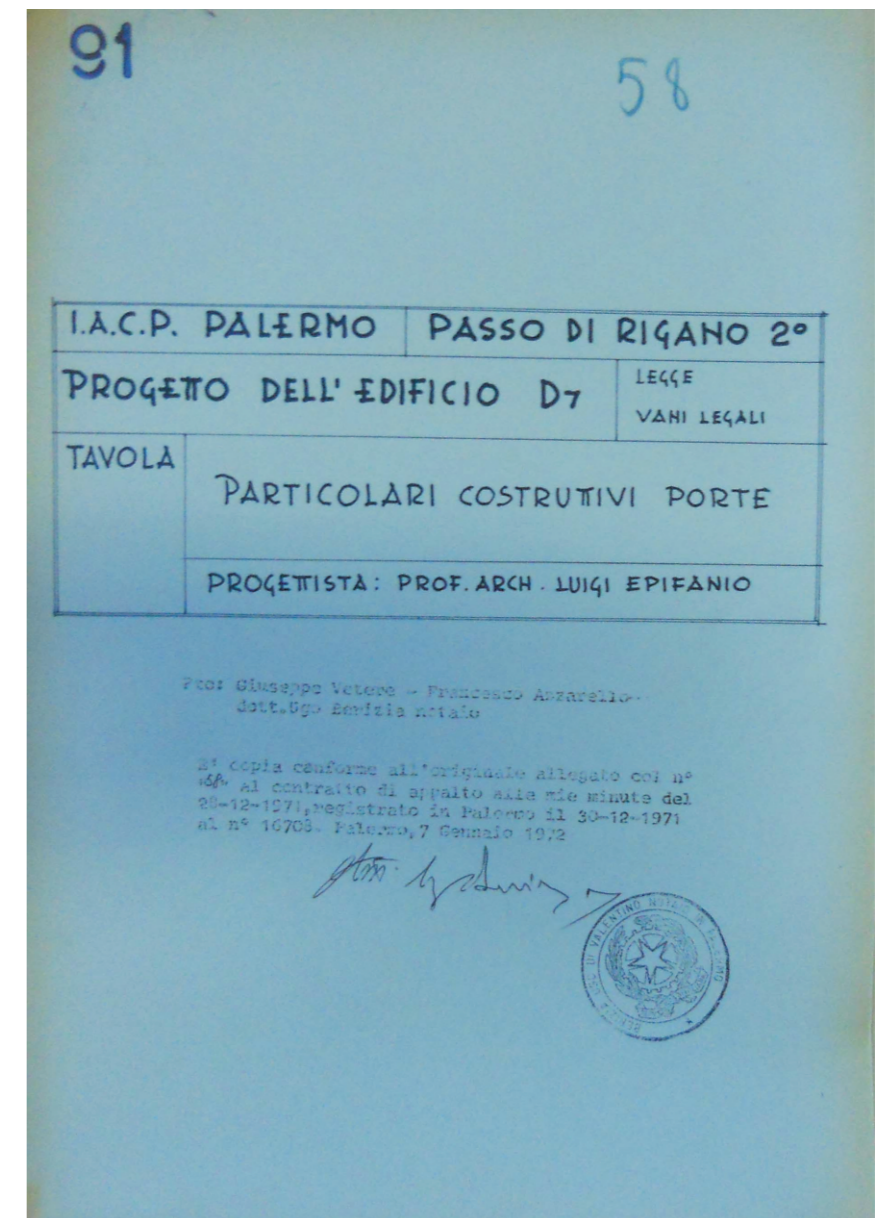
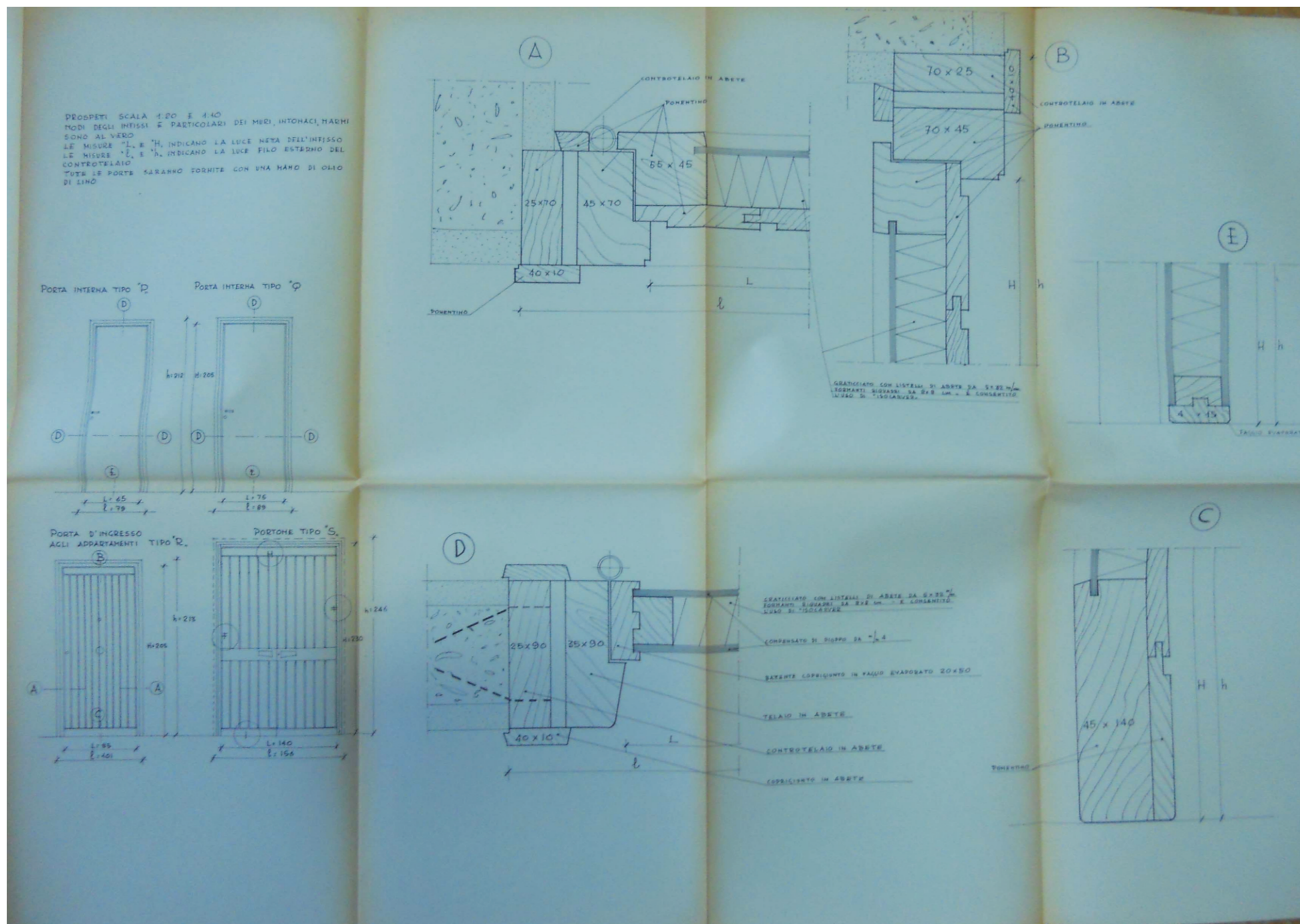
Pro: Giuseppe Vetere - Francesco Azzarello -
dott. Ug. Barisio notaio

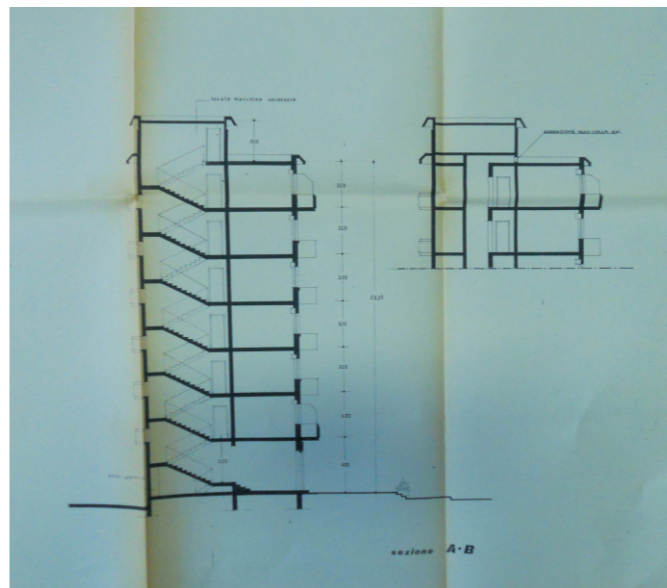
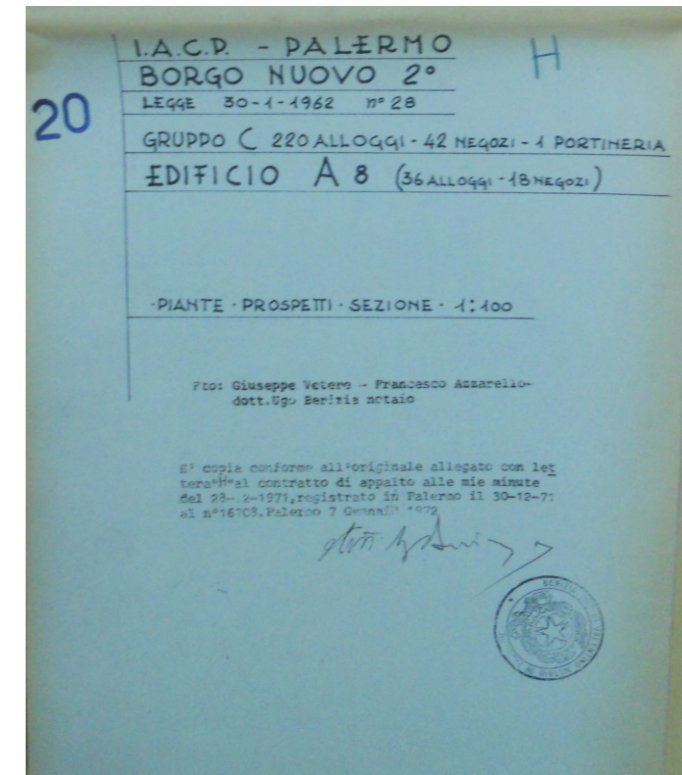
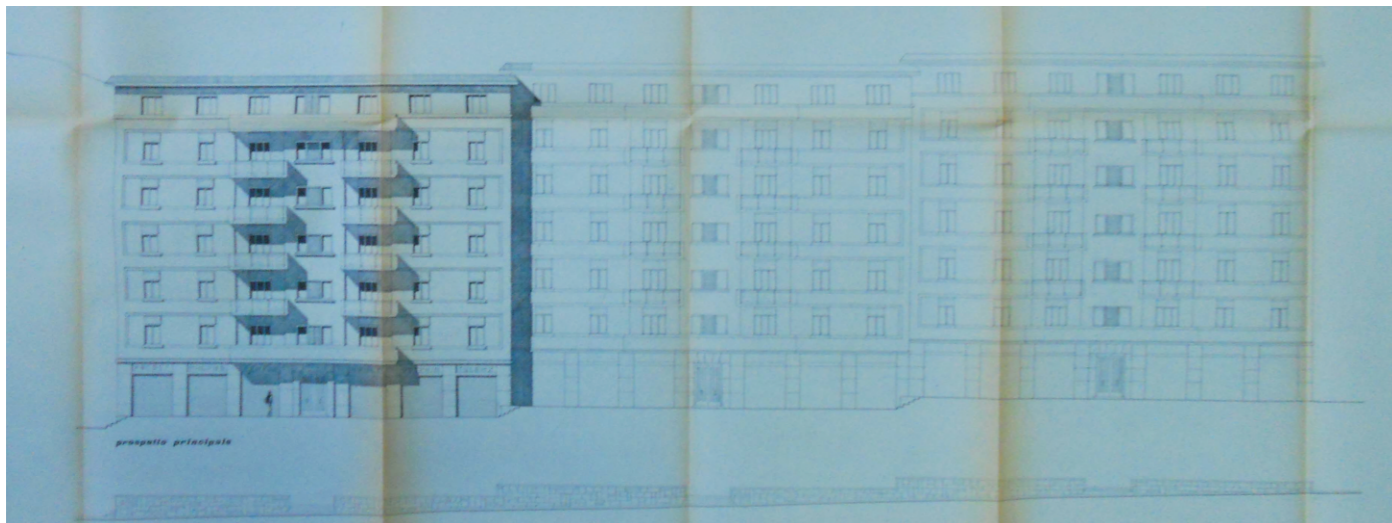
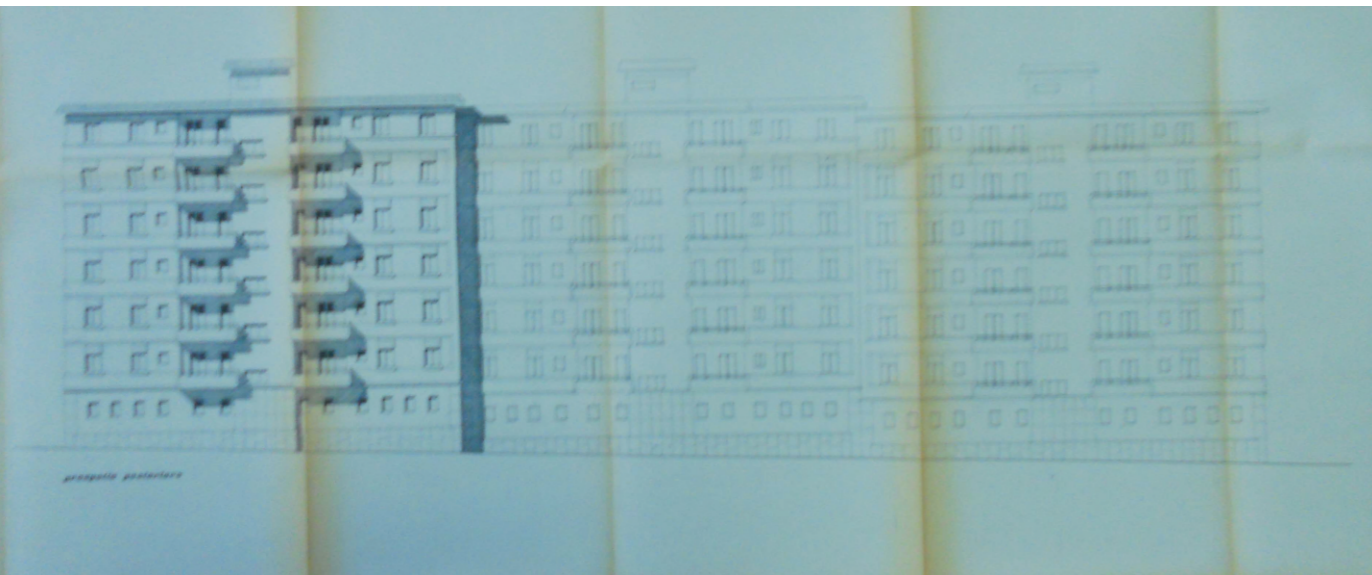
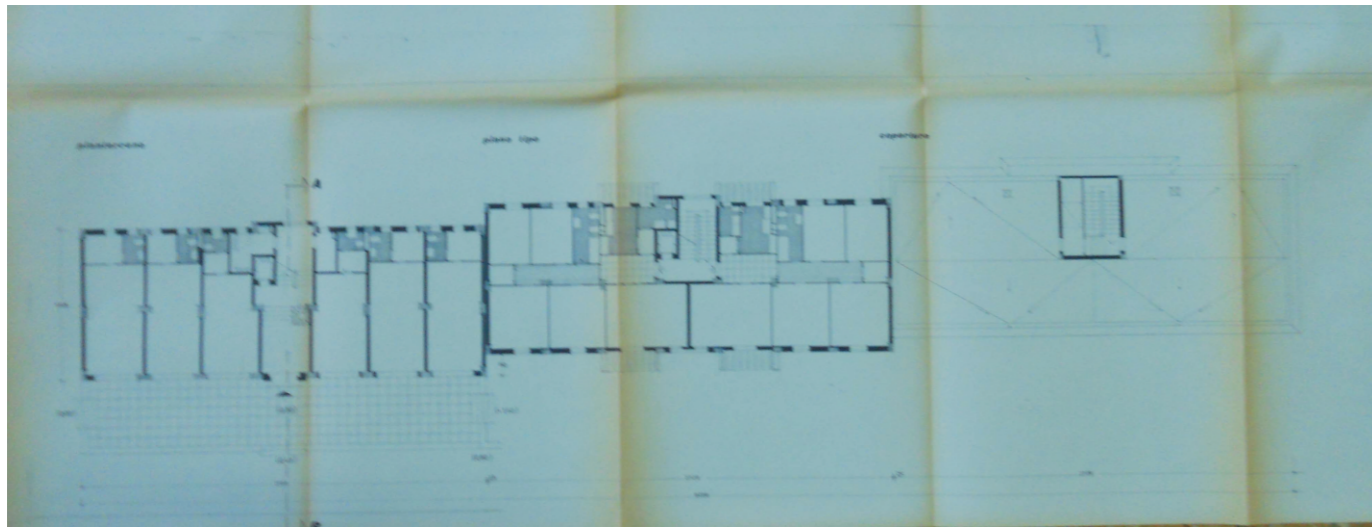
E' copia conforme all'originale allegato con let-
tera al contratto di appalto alle mie minute
del 28-1-1971, registrato in Palermo il 30-12-71
al n°16708, Palermo 7 Gennaio 1972

1956-83 QUARTIERE BORGNO NUOVO
Edificio D7 - Pianta piano terra, pianta piano tipo, pianta copertura
Archivio IACP di Palermo



1956-83 QUARTIERE BORGNO NUOVO
 Edificio D7 - Prospetti
 Archivio IACP di Palermo





1956-83 QUARTIERE BORGO NUOVO
 Edificio A8 - Dettagli costruttivi porte
 Archivio IACP di Palermo



1956-83 QUARTIERE BORGO NUOVO
Foto attuali



1956-83 QUARTIERE BORGO NUOVO
Foto attuali



1956-83 QUARTIERE BORGNO NUOVO
Foto attuali