



5th European Biennial
of Landscape Architecture
Barcelona
Rosa Berba European Prize

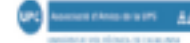
5th EUROPEAN LANDSCAPE BIENNIAL OF BARCELONA INTERNATIONAL EXHIBITION OF LANDSCAPING SCHOOLS



ETSAB



UPC



IL COZZO DELL'ALBERO - THE TREE'S HILL 1

students:

Luca Albi, Tiziano Calvo, Valeria Costantino, Giampaolo La Barbera, Lorenza Maiorana, Manuela Raimondi, Karim Syed

teacher Nicoletta Carini

subject course:

master 2nd level: ARCHITETTURA DEI GIARDINI E PROGETTAZIONE DEL PAESAGGIO

professors: P. Agnello, M. Aprile, P. Avella, M. Beccali, M. Buffa, D. Costantino, C. Dazzi,

G. Fata Del Bosco, A.J. Lima, E. Mauro, G. Napoli, T. Parozza, E. Sessa

academic year 2003/04

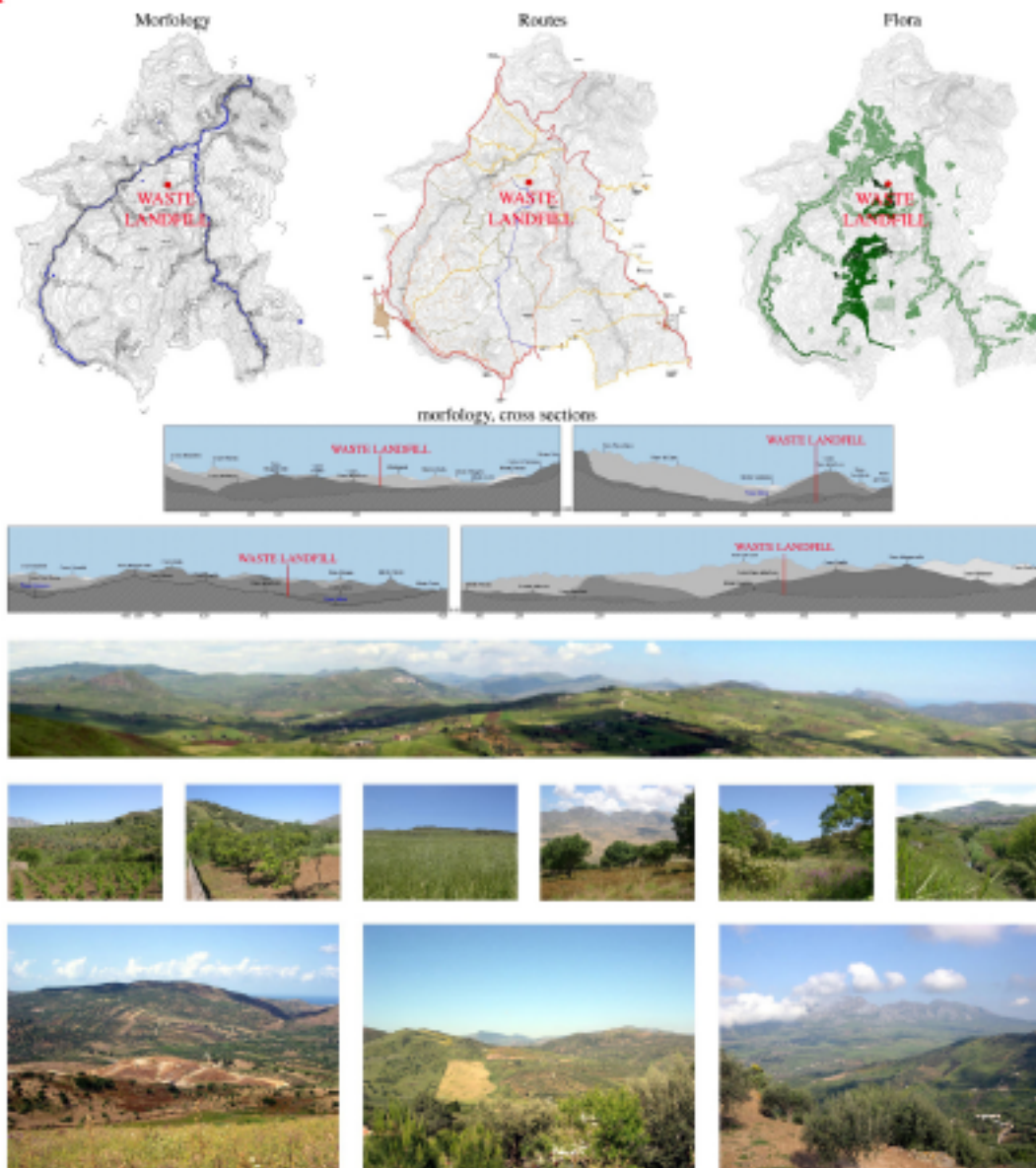
Department Storia e Progetto nell'Architettura - University of Palermo (Italy)

The environmental remediation design of an obsolete waste landfill, near Palermo (Italy).

Aims: to transform the landfill area dumping ground with a landscape plan, though respecting the technical rules and the legal regulation; to identify the strategies necessary for the resource-waste to be active; to know the system of real and potential resources and to draw criteria to convey financial private sources into operations, though onerous for local government; to produce a plan that has a communicable and innovative method.

Hypothesis: changing the area with reference to the system of Cultural and Environmental Heritage (this hypothesis is confirmed by the knowledge of other area of Sicily, with the same morphologic and antropic shapes; by the proximity of naturalistic interest areas; by the orography of the place, marked by the two valleys of the Eleuterio and Milicia rivers); realization of two plants installations: one for the production of compost from organic waste and the other the treatment of inert materials; control of accessibility regarding the main regional viability both in the view to the recovery of raw material from the referential basin and of distribution of end products.

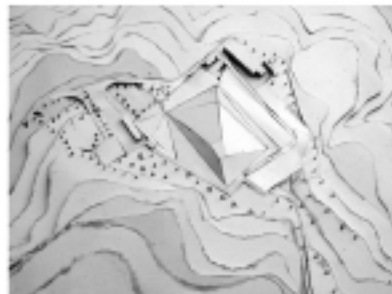
Design: realisation of an artificial hill ("the tree's hill", borrowing the local topotym), through the moulding of the waste, so that it becomes the foot of a sculpture (a symbolic tree). The tree's hill is a step of a ridge path, that winds through farms, towers and farmhouses (sometimes already used for tourist purposes); it is linked to the local viability.



IL COZZO DELL'ALBERO - THE TREE'S HILL 2



the site plan and the project's maquette



plan - waste landfill and environmental remediation design



section aa - waste landfill and environmental remediation design



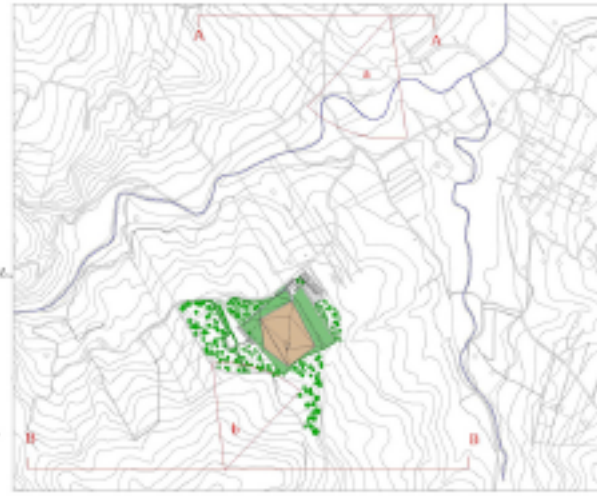
section bb - waste landfill and environmental remediation design



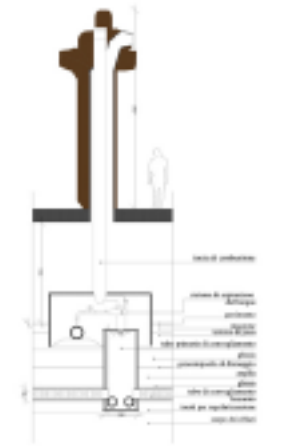
IL COZZO DELL'ALBERO - THE TREE'S HILL 3



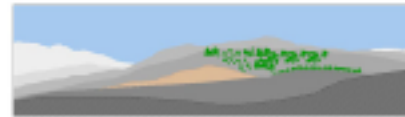
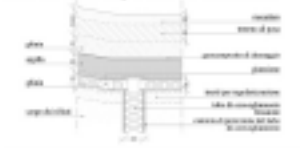
the pipe system to collect the bio-gaz



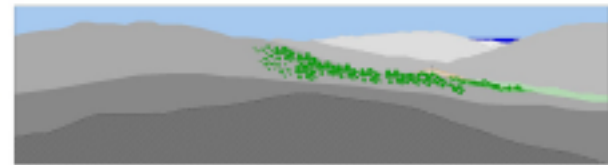
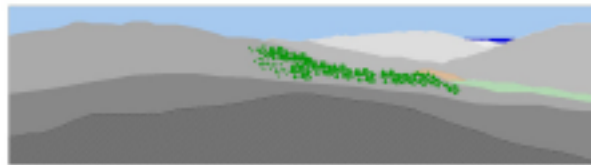
general plan, with the buildings and the flora



the rock to burn the bio-gaz
 the new covering of the waste landfill



view A1



view B1

the waste landfill and the proposed modification

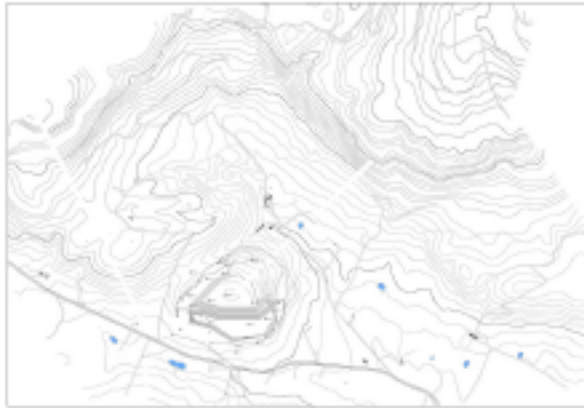
views (b and a) before and after the modification



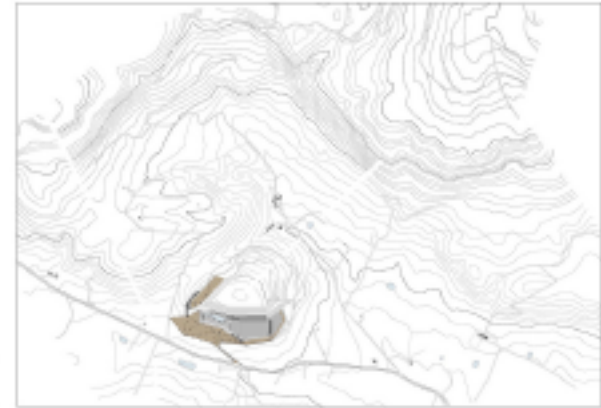
LA ROCCA CHE PARLA - THE SINGING MOUNTAIN 2



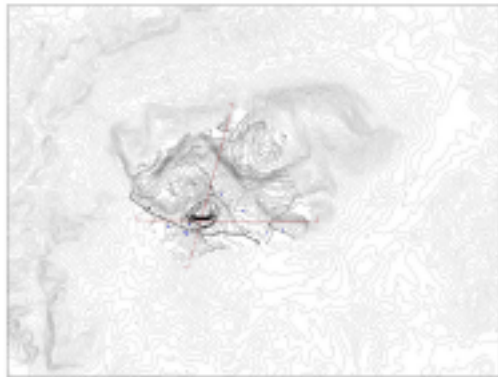
the stone typology (calcarenite)



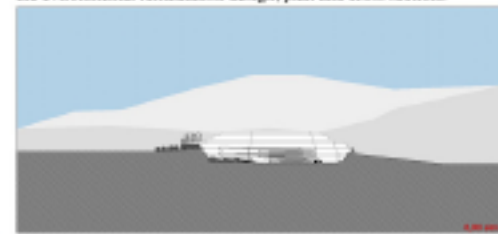
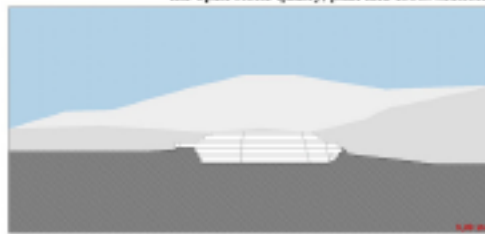
the open stone quarry, plan and cross sections



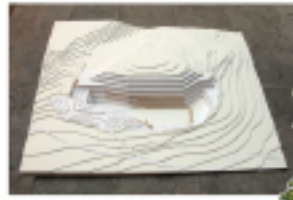
the environmental remediation design, plan and cross sections



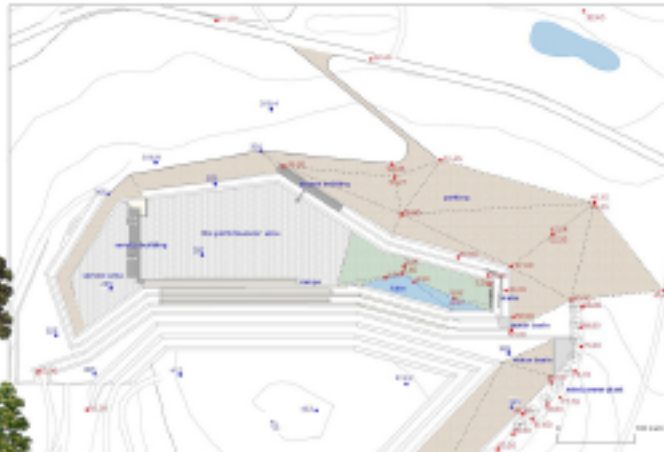
perspective cross section



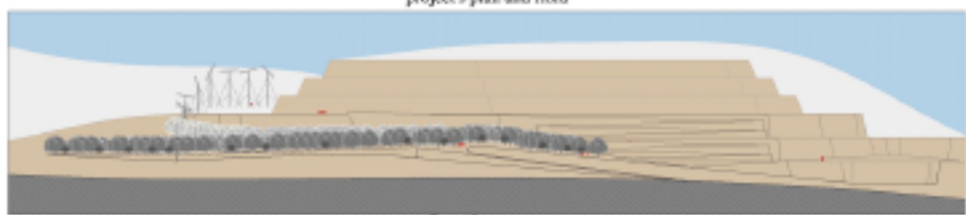
LA ROCCA CHE PARLA - THE SINGING MOUNTAIN 3



- Cipressus sempervirens* hor.
- Amipora unicoloris microserpis*
- Athanas usula*, *Quercus ilex*, *Quercus robur*
- Aceris cyrenoplylla*, *Aceris dasycarpus*
- Cerris siliquastrum*, *Cerastium siliqua*
- Robinia pseudoacacia*, *Pinus pinea*,
Yucca bicoloris



project's plan and floor



view from the access route



interior perspective views

