



ITRUVIO

International Journal of
Architectural Technology and Sustainability



SPECIAL ISSUE

RESTORATION AND REUSE OF HERITAGE REUSO 2023



ITRUVIO

International Journal of
Architectural Technology and Sustainability

SPECIAL ISSUE

RESTORATION AND REUSE OF HERITAGE REUSO 2023

EDITORIAL TEAM

Editor in Chief

Luis Palmero Iglesias

Universitat Politècnica de València, Spain

Editor Associated

Graziella Bernardo

Università degli Studi della Basilicata, Italy

Stefania De Gregorio

Università degli Studi dell'Aquila, Italy

Editorial Boarding Members

Pierluigi De Berardinis

Università degli Studi dell'Aquila, Italy

Fernando Cos-Gayón López

Universitat Politècnica de València, Spain

Joaquín Díaz

Technische Hochschule Mittelhessen, Germany

Maria Cristina Forlani

Università degli Studi "G. D'Annunzio" Chieti-Pescara, Italy

Francesco Frontini

Scuola universitaria professionale della Svizzera Italiana,
Switzerland

Juan Antonio García-Esparza

Universitat Jaume I, Spain

Francesco Paolo R. Marino

Università della Basilicata, Italy

Fabio Minutoli

Università degli Studi di Messina, Italy

John Pendlebury

Newcastle University, United Kingdom

Gilles Perraudin

Architect, Lyon, France

Advisory Board Members

Avi Friedman

McGill University, Canada

Tsuneaki Fukui

Hosei University, Japan

Gerhard Kalthöfer

Gestaltung Hochschule Mainz, Germany

Olimpia Niglio

Kyoto University, Japan

Published by

Univesitat Politècnica de València

CONTACT

Luis Palmero Iglesias

Phone: +34 963879451

Fax: +34 963879129

Email: lpalmero@csa.upv.es

Scientific Comitee

Stefano Bertocci

Università degli Studi di Firenze

Javier Cárcel Carrasco

Universitat Politècnica de València, Spain

Olivier Chamel

Florida A&M University

Rosa María Domínguez Caballero

Universidad de Sevilla, Spain

Antonella Guida

Università degli Studi della Basilicata, Italy

John Hughes

University of West of Scotland, United Kingdom

Özlem Lamontre-Berk

École Nationale Supérieure d'Architecture de Lyon, France

Renato Morganti

Università degli Studi dell'Aquila, Italy

Sandro Parrinello

Università di Pavia

Tiziana Poli

Politecnico di Milano, Italy

Donatella Radogna

Università degli Studi "G. D'Annunzio" Chieti-Pescara, Italy

Adriana Rossi

Seconda Università degli Studi di Napoli, Italy

Ali Taha Omar

Italian-Egyptian Center for Restoration and Archaeology (CIERA),
Egypt

Rafael Temes Córdovez

Universitat Politècnica de València, Spain

Humberto Varum

University of Aveiro, Portugal

Graphic designer

Enrique Mateo

Triskelion Diseño Editorial

Cover image: Luis I Bridge, Engineer Seyrig, Th., (1886), Porto,
Portugal. Cover image author: Graziella Bernardo.



UNIVERSITAT
POLITÈCNICA
DE VALÈNCIA



FOCUS AND SCOPE

VITRUVIO Journal is an international research journal publishing articles with links to architectural technology and sustainability. The aim is to present original technical advances as well as innovative methods and applications in order to contribute to the sustainable development through the architecture.

The journal is a resource for sharing innovative researches with an interdisciplinary comparison.

The selection of papers complies with the protocols for scientific publication.

The peer review is done through a system of referees, experts in the field of research.

The journal is published twice a year and appears in digital version.

SECTION POLICIES

Editorial: open indexed

This section describes the point of view of experts in the topics related to the journal. Written by the editorial team or an invited author.

Research articles: submissions, open indexed, double blind peer review. The peer review will evaluate the coherence with the focus and scope of the journal, the technical quality, the technical impact and relevance and the presentation.

OPEN ACCESS POLICY

VITRUVIO Journal provides immediate open access to its content.

SUBSCRIPTION INFORMATION

Volume 8: 15€

Contact: pedidos@editorial.upv.es

PRINTED IN SPAIN BY: By print percom, s.l.

EISSN: 2444-9091

On line version:

<http://polipapers.upv.es/index.php/vitruvio>

ETHIC AND BEST PRACTICES

VITRUVIO, in its commitment to ensure ethical and rigor of its content, follows the Declaration ethic and best practice of PoliPapers (service of the Universitat Politècnica de València to promote open editing of scientific electronic journals).

COPYRIGHT NOTICE

Online journal is published by UPV, being necessary to cite the source in any total or partial reproduction.

Unless otherwise stated, all content of this electronic edition is distributed under a license and distribution "Creative Commons Attribution-Non commercial 4.0" (CC-by-nc).

Publisher allows authors to upload their articles in institutional or subject repositories for their dissemination and preservation.

PRIVACY STATEMENT

The names and email addresses entered in this journal will be used exclusively for the stated purposes of this journal and will not be available for any other purpose or another person.

EDITORIAL QUALITY CRITERIA

Vitruvio journal declares its commitment to respect the integrity of published works. For this reason, plagiarism is strictly prohibited and texts that are identified as either plagiarism or fraudulent content will be removed or unpublished. The journal will act in these cases as quickly as possible. By accepting the terms and agreements expressed by our journal, authors must ensure that the text and the materials associated with it are original (or that they have the publishing permissions) and that there isn't infringed copyright. Authors also have to justify that in case of joint authorship, there was full consensus of all authors involved and that the manuscript has not been previously presented or published in other media.

Expressed opinions are those of the authors and do not necessarily reflect the editorial opinion. All people listed as authors are responsible for the contents of the investigation by having contributed substantially in their physical execution and/or intellectually. Authorship is recognized for the contributions made to the field of knowledge, therefore, the author is responsible for agreeing with the team that took part in the conduct, and for the decision about the order of the authors.

Acknowledgements should be cited, explaining the sources of research funding (if any) and aid, substantial advice or recommendations made by third parties.

COPYRIGHT NOTICE

Hard copy and online journal is published by UPV, being necessary to cite the source in any total or partial reproduction.

Unless otherwise stated, all content of this electronic edition is distributed under a license and distribution "Creative Commons Attribution-Noncommercial 3.0 Spain" (CC-by-nc).

VITRUVIO is not responsible for any copyright of the images reproduced in the texts. These are the responsibility of the authors in accordance with the arrangements set out in the call for submissions.

© texts: authors

© images: authors/institutions

Table of contents

Editorial Team	iv
Contact	iv
Focus and scope	v
Editorial Humberto Varum, Cilísia Ornelas, and Luis Palmero	2
Decay detection in historic buildings through image-based deep learning Silvana Bruno, Rosella Alessia Galantucci, and Antonella Musicco	6
Improving Cultural Heritage conservation: LSTM neural networks to effectively processing end-user's maintenance request Marco D'Orazio, Gabriele Bernardini, and Elisa Di Giuseppe	18
Documentation, conservation, and reuse planning activities for disused cultural heritage Elisabetta Doria and Marco Morandotti	30
H-BET Historic Built Environment Typologies. Open spaces and SUOD events in the compact historic town Edoardo Currà, Alessandro D'Amico, Martina Russo, Marco Angelosanti, Cassia De Lian Cui, and Enrico Quagliarini	48
Integration of 3D modelling with photogrammetry applied on historical images for cultural heritage Francesca Condorelli, and Sara Morena	58
3D printed concrete blocks made with sustainable recycled material Stelladriana Volpe, Valentino Sangiorgio, Andrea Petrella, Michele Notarnicola, Humberto Varum, and Francesco Fiorito	70
Integrated investigation methodologies for architectural Heritage conservation and promotion: La Romita di Cesi (TR), Umbria, Italy. Anastasia Cottini and Pietro Becherini	84
The Monastery of Sant Miquel d'Escornalbou: multidisciplinary research for the understanding of the relation between the religious complex, the territory and the European Franciscan network Maria Soler Sala, Roberta Ferretti, and Federico Cioli	94
Workflow for the virtualisation of historic gardens and their vegetation. Historical Garden of the Arguijuela de Arriba (Cáceres, Spain) Carlos Rodríguez Sánchez, Pablo Alejandro Cruz Franco, and Adela Rueda Márquez de la Plata	110
The aftermath of the Emilia 2012 earthquake damages and the safeguard of the rural anthropized landscape Manlio Montuori	128
On the interoperability performance of HBIM models for structural conservation and upgrading of building aggregates in the Italian minor centres Adriana Marra, Giovanni Fabbrocino, and Ilaria Trizio	140

Editorial

The Xth edition of the ReUSO conference (ReUSO 2022), dedicated to the Documentation, Restoration and Reuse of Heritage, was organised at the Faculty of Engineering of the University of Porto, between the 2nd and 4th of November 2022. Detailed information of the conference can be found in <https://paginas.fe.up.pt/~reuso/home>.

ReUSO 2022 intended to motivate the discussion among scholars on issues related to the theory of restoration and its methodological applications, in order to consolidate the criteria and theoretical aspects in relation to contemporary needs and, above all, to the complexity of possible future orientations of the related scientific sectors.

Particularly, in certain regions of Europe and in the Mediterranean area, apart from the concerns related to the health emergency, natural hazards and environmental issues, among many other relevant societal challenges, the unexpected emergency situation in territories invested by conflicts generate new concerns and challenges.

In fact, additionally to the most notable aspects of the conservation and compatible use of the architectural, landscape, archaeological and historical-artistic heritage, there is the real risk of the definitive loss not only of the physical appearance but also of the historical memory of important parts of our cultural heritage.

ReUSO conference was a co-organisation of the Faculty of Engineering of the University of Porto, Instituto da Construção, CONSTRUCT Research Unit, of the same Faculty, and Associazione ReUSO, with the support of an Organizing Committee and a Scientific Committee, in addition to the members of the Founding Committee of ReUSO. Also worthy of note is the support of several professors and researchers from the Faculty of Architecture of the University of Porto. Several companies and institutions (Universities, Institutes, Laboratories, Research Centers and Associations) supported the organization of this international conference.

The 10th edition of the ReUSO conference was an opportunity to acquire new knowledge and share experiences in areas associated with interventions in the cultural heritage, namely: (i) Reuse and restoration (concepts, current guidelines and future trends); (ii) The teaching of restoration, conservation and related disciplines; (iii) Mitigation of risks in assets; (iv) Impact of wars on heritage; and, (v) New technologies to support the characterization and intervention in the built heritage. Participants had the opportunity to listen reports of experiences associated to many interventions in the heritage.

The conference resulted in the publication of a book of abstracts and a book of proceedings, with the papers presented at the conference. Some selected articles were proposed for publication in various journals associated with the event, such as this issue of VITRUVIO - International Journal of Architectural Technology and Sustainability. Thank you to the magazine's administration for this collaboration.

The following is a synthesis of the selected articles:

Decay detection in historic buildings through image-based deep learning. Bruno S., Galantucci, R.A., Musicco, A. This article presents an innovative tool for evaluating the state of conservation of the built heritage instead of using traditional methods, which are considered laborious and inefficient, especially in the case of buildings characterized by geometrical and morphological complexity and huge extension, or at risk of collapse. The innovative approach consists of a deep learning-based system, the Mask R-CNN, for an expeditious detection of multiple kinds of decay morphologies, starting from 2D images, taken in different environmental conditions, image sensors and resolution. The experimentation has been validated on a highly heterogeneous dataset of images of historic buildings, such as castles, monasteries, noble

buildings and rural buildings. The research outcomes highlighted the significance of this non-invasive inspection technique as a support in the preliminary knowledge of the building state of conservation as well as in the decay mapping of some particular classes of alterations.

Improving Cultural Heritage conservation: LSTM neural networks to effectively processing end-user's maintenance requests. D'Orazio, M., Bernardini, G., Di Giuseppe, E. Preventing the occurrence of deterioration phenomena is the smartest strategy for the conservation of Cultural Heritage buildings. But how much and what kind of information is available to guide interventions? As a supporting tool for conservation and preventive maintenance plans, Machine Learning methods have recently been proposed, mainly based on physical data from diagnostics on existing buildings. It has recently been investigated the possibility of expanding the available databases by including also textual information. By analysing a CMMS (computer maintenance management software) dataset referred to a listed Italian building, a research team from the Università Politecnica delle Marche developed an LSTM Neural Network able to predict the appropriate maintenance interventions to be implemented, demonstrating its effectiveness in reducing service interruptions and improving the general maintenance activity.

Documentation, conservation, and reuse planning activities for disused cultural heritage. Doria, E., Morandotti, M. As part of the digitisation process concerning architecture, several innovative tools are currently being developed. An interesting field of research concerns the structuring of a digital twin of a building, a method that can be successfully implemented also in historical and artistic heritage buildings, as shown in the Doria and Morandotti's paper. The creation of a three-dimensional model and the setting up of an associated digital database of a portion of Bellisomi-Vistarino Palace in Pavia (Italy) has proved to be useful for several purposes, such as: providing a deep and detailed knowledge of the building, supporting the identification of architectural restoration strategies, supporting the definition of intervention techniques, supporting the definition of actions to enhance the value of the asset. As long-term goals, this kind of approach is believed to contribute to the improvement of cultural and service offerings as well as the quality of life of citizens while disseminating scientific, technical, environmental and architectural knowledge.

H-BET Historic Built Environment Typologies. Open spaces and SUOD events in the compact historic town. Currà, E., D'Amico, A., Russo, M., Angelosanti, M., De Lian Cui, C., Quagliarini, E. The article talks about the risks that arise in the built environment in reference to the safety of people in relation to construction and open spaces. It is a latent and very interesting concern given that the Italian historical centers present a morphology in their constructive components very varied but with their own identity and an important heritage value. Specifically, the Historic Built Environment Typologies (H-BETs) can help to evaluate user behaviour during and after the event. Focusing on the role of the classification of the open spaces, the paper presents the H-BETs and their potential role in the multi-risk assessment of the compact historic town. The specific risk conditions of the urban areas (e.g., crowding, the complexity of the overall form of BEs, characteristics of built elements, uses of BEs), and the physical characteristics of historic urban BE (e.g., the height of the built fronts, number, and type of accesses, the slope of the ground) are considered together in order to propose a classification of different type of open spaces, starting from morphological classes towards the definition of a complete typological categorization, representative of the urban system's variables that interact with the identified SUOD hazards.

Integration of 3D modelling with photogrammetry applied on historical images for cultural heritage. Condorelli, F., Morena, S. The research presents the potential to integrate the photo-grammetry from historical images with 3D modelling, and the possibility of "survey" buildings that, due to various vicissitudes, have been modified over time. This study shows a pipeline applied to the Caltanissetta Centrale Station and the possibility of "recovering" the integration of

photogrammetry from historical images and 3D modelling. The study uses 3D modelling to interpretate architecture, using photos to capture the advance of time and the life of a building at a precise historical moment. The digital reconstruction is created through three-dimensional models of architectures. The methodology is based in Structure from Motion (SfM) and Non-Uniform Rational Basis Splines (NURBS). The final model is generated with Rhinoceros software (version 6) by having as a basis the result obtained from the photogrammetric workflow using historical images. Future research will improve the 3D reconstruction process.

3D printed concrete blocks made with sustainable recycled material. Volpe, S., Sangiorgio, V., Petrella, A., Notarnicola, M., Varum, H., Fiorito, F. This research shows the use of recovered materials in building construction as an effective strategy for reducing the environmental impacts in traditional buildings, using the 3D construction printing as an innovative technology to combine recycled materials and novel geometries. The methodology is based on three steps: reuse strategy conception; target performance definition, modelling and iterative simulation; 3D printing setting. The methodological approach has been applied to a 3D printable block using as printable material a cement-based mortar with recycled aggregates and recycled insulating material with a hexagonal pattern that can be easily produced with 3D printing technology, and achieve the required thermal performance. Twenty-four different models have been analysed using ANSYS R22 software as steady-state thermal analysis. The simulation evaluates the heat transfer to achieve the required performance varying the parameters.

Integrated investigation methodologies for architectural Heritage conservation and promotion: La Romita di Cesi (TR), Umbria, Italy. Cottini, A., Becherini, P. This article presents research conducted as part of the European project F-ATLAS, studying the convent complexes of the Franciscan Observance and their landscape context between Italy, Spain and Portugal. The research uses the historical and archival sources and integrated digital survey methodologies to document and study the network of the Observance convents and the routes that connect them for their conservation, protection and valorisation. Two integrated digital survey campaigns were carried out in parallel with studying historical and archival sources, including the historical background, and the study of the conventual complex. The digital survey is supported by TLS and photographic instruments. The digital surveying techniques, bibliographic study, and archival sources are crucial to support architectural analysis of historical buildings. The research seeks to preserve the Observant Cultural Heritage and future management of La Romita di Cesi, Umbria, Italy.

The Monastery of Sant Miquel d'Escornalbou: multidisciplinary research for the understanding of the relation between the religious complex, the territory and the European Franciscan network. Soler Sara, M., Ferretti, R., Cioli, F. The project seeks to study the Franciscan Observance network and identify practical methods for the preservation, protection and promotion of this significant heritage. The focus of the contribution is the multidisciplinary examination of the Sant Miquel d'Escornalbou Monastery in Tarragona, Spain, where an Italian and a Spanish team worked together to develop the historical, architectural, and patrimonial research on this fascinating center of medieval spirituality, by developing a new cultural approach based on existing materials and data obtained during the digital survey campaign and archival research taking advantage of digital technologies to create a network that can create new culturally, historically and scenically links. The results of the international workshop held in November 2021 will serve as the foundation for further analysis of the complex's evolutionary stages, the structural conditions of the buildings and the definition of potential redevelopment strategies.

Workflow for the virtualisation of historic gardens and their vegetation. Historical Garden of the Arguijuela de Arriba. Rodríguez Sánchez, C., Cruz Franco, P., Rueda Márquez de la Plata, A. This proposal combines photogrammetry with conventional survey methods to create a complete virtualization of the space of interest, including its topography, the layout, the buildings, the vegetations and the surrounding environment. The subject of the research is an historic garden in a location of great significance like the castle of la Argüijuela de Arriba in the province of Cáceres (Spain) and its objective is to combine various techniques to obtain an innovative representation of the enclave, which can be used for a future project for the technical improvement and the preservation of it. This workflow, which is made up of a series of digital representations such as virtual visits, rendering visuals, etc. is useful for making this historical place known to the public, for facilitating its preservation and usage for events and visits and for allowing the implementation of a proposal for universal accessibility.

The aftermath of the Emilia 2012 earthquake damages and the safeguard of the rural anthropized landscape Montuori, M. This paper identifies spontaneous evidence derived from the practical knowledge of rural cultures as an illustration of the methodology used to preserve the distinctive values of the anthropized rural landscape in the Emilia region in Italy. In this seismic-prone areas, extensive measures are needed to protect tangible characteristics and intangible values made of vernacular construction techniques. To manage the phases of this dynamic transformation, the definition of guidelines has been strategic to support operations without establishing a strict set of constraints and rules to understand informal architecture constructions and their variations through an analysis of historical construction techniques. Preserving spontaneity also strengthens historical memory and the perception of time. In this way this study aims to illustrate the approach to rebuilding used for the reconstruction, to understand the rural settlement's logic and the qualities that should be conserved and improved throughout the rebuilding phase, and the interdisciplinary approach required.

On the interoperability performance of HBIM models for structural conservation and upgrading of building aggregates in the Italian minor centres. Marra, A., Fabbrocino, G., Trizio, I. This article presents another research with the use of digital tools that for years have been helping in a relevant way to obtain data, in this case the demonstration that the parametric model of a historic building with a high level of digital maturity can be configured as a tool that promotes the use of digital technology in collaboration between the different professionals involved in the process of recovery and rehabilitation of historic buildings. It also represents the starting point for the development of structural models for quantitative analysis. The application of HBIM to the group of buildings called "La Giudea" in Santo Stefano di Sessanio (AQ), is a representative example of the historical heritage of the small medieval town in Abruzzo. The parametric model was developed in the design of reinforcement and restoration works requiring interactions between digital environments. In this framework, research aimed to evaluate the interoperability of the digital model and, in particular, the vertical interoperability between different software packages.

Humberto Varum

Cilísia Ornelas

Luis Palmero



Reconstructive hypothesis of a historical phase of Caltanissetta Centrale Station.

Integration of 3D modelling with photogrammetry applied on historical images for cultural heritage

Francesca Condorelli¹, and Sara Morena^{*2}

¹Free University of Bozen, Bozen, Italy.

²University of Palermo, Palermo, Italy.

Email: * sara.morena@unipa.it

Abstract: The recovery of past architecture through 3D modelling is an important challenge today to the preservation of heritage. Decisive support for the interpretation of architecture can certainly come from historical images and old photographs that fix a portion of space at a specific time, keeping it unchanged over the years. This acquisition is decisive for studying architectures of the past that can be reinterpreted and analysed. Photos, in fact, capture the advance of time and the life of a building at a precise historical moment, becoming essential documents for the study and knowledge of heritage. An additional advantage is when these old images can be processed through Structure for Motion procedures and, the results obtained, used as support for a 3D model of buildings that no longer exist. The work shows an interesting pipeline applied to the Caltanissetta Centrale Station and the possibility of “recovering”, even if virtually, a phase of its architectural evolution through the integration of photogrammetry from historical images and 3D modelling. The case study is an opportunity to analyse the procedure still under development, as well as to identify the main difficulties encountered in this process and possible future developments.

Keywords: rediscovery; 3D Model; old photos; Structure for Motion; railway station; Sicily.

1. Introduction

Throughout history, cities have undergone changes dictated by needs or catastrophes that inevitably make alterations to the existing buildings, losing the evolution of structures and traces of city memory.

Early evidence of the past comes to us from the images captured by artists, especially during the *Grand Tour*, who have immortalised city views and monuments over the centuries. These painters framed a portion of space, landscape, architecture, or details, important elements in recognising the memory of the city and how it had been perceived, passing this information down through time. Analysis of iconographic sources has often been useful in interpreting buildings (Sutera, 2009; Garofalo, 2020), especially in finding information before the advent of photography. The latter, in fact, stands as one of the most valuable tools for knowing the past. Whether souvenir or documentary photos, they capture scenarios by locking them in time, often showing fundamentals for the analysis and examination of monuments.

Several studies have focused on perspective restitution from pictures, either analogically or automatically through image rectification (Rapp, 2008; Morena and Talenti, 2021; Agnello, 2022). Further investigations have been conducted with the support of digital representation tools that today can also be used as a basis for the reconstruction, through processes of perspective restitution of one or more images, not only of the facades but also of the entire buildings directly in 3D space (Borin *et al.*, 2018; Barrale *et al.*, 2022).

Hence, historical images represent great potential because they contain essential information for deciphering the buildings. Nowadays, in addition, thanks to continuous technological evolution, they can also be elaborated with a photogrammetry process able to extract metric information that can be used for the restoration and virtual reconstruction of destroyed or altered objects. The alignment of historic imagery can also provide a previously unknown view of buildings and details that were not available only with two-dimensional images and that could be explored in a 3D space (Maiwald *et al.*, 2018). Indeed, the photogrammetric technique offers the possibility to not only accurately reconstruct the geometry of the object but also to collect important data such as texture, material, colour, damage, and knowledge about its structure. All this information is necessary for the study of the object. Under certain special conditions, without appropriate documentation, historical images are the only way to research and reconstruct the past (Bitelli *et al.*, 2017).

The restitution of dense or sparse point clouds from historical images, thus, represents an important support for the interpretation of architecture. The metric information that can be extracted from the photogrammetric model, in fact, are fundamental to the process of modelling and virtual reconstruction of the building. The modelling represents a critical moment to understand the structure, its characteristics and composition. An additional advantage of this process of representation, especially of non-existing heritage, is the possibility of restoring, albeit virtually, a historical phase. This aspect is crucial not only for the historical knowledge of architecture but also for facilitating the enjoyment of the asset (Avella, 2015; Girgenti, and Antonino, 2021). Furthermore, digital reproduction adds value to the representation by ensuring the construction of convincing visuals capable to involve a growing number of users, experts and non-experts, and delivering instantaneous information.

This paper aims to integrate the 3D modelling with the photogrammetry from historical images of the Caltanissetta Centrale Station in Sicily, particularly of an intermediary phase of the station that does not exist today, to rediscover a part of the evolution that the architecture has undergone over time. The building "surveyed" through this procedure, in fact, today is part of an enlarged station and, therefore, difficult to identify. The use of photogrammetry based on historical images allowed the possibility of extrapolating useful information to scale the model and hypothesise its shape and volume.

2. Case study: Caltanissetta Centrale Station

The introduction of railways in Italy was an important nineteenth-century event of a technological nature and represented a novelty with significant economic and social impact on the local reality. This occurred at different times and in different ways in each city, leading to equally diverse and not always favourable consequences. Of particular interest to this research work is the case of railroad networks in the region of Sicily, especially concerning the stylistic aspects of the architecture. Attention is focused on the Caltanissetta Centrale Station and its evolution, concentrating mainly on an intermediate phase of its history. The need during the years to enlarge the building and makes it take on different stylistic connotations inevitably led to an expansion of the station, causing its traces to be lost. This work represents one part of a more extensive study of historical knowledge of the building and focuses on this intermediate phase of the structure evolution due to the presence of an adequate photographic set that thus gives the opportunity to experiment with innovative methods of investigation. The realisation of the first project of the station, drawn up around

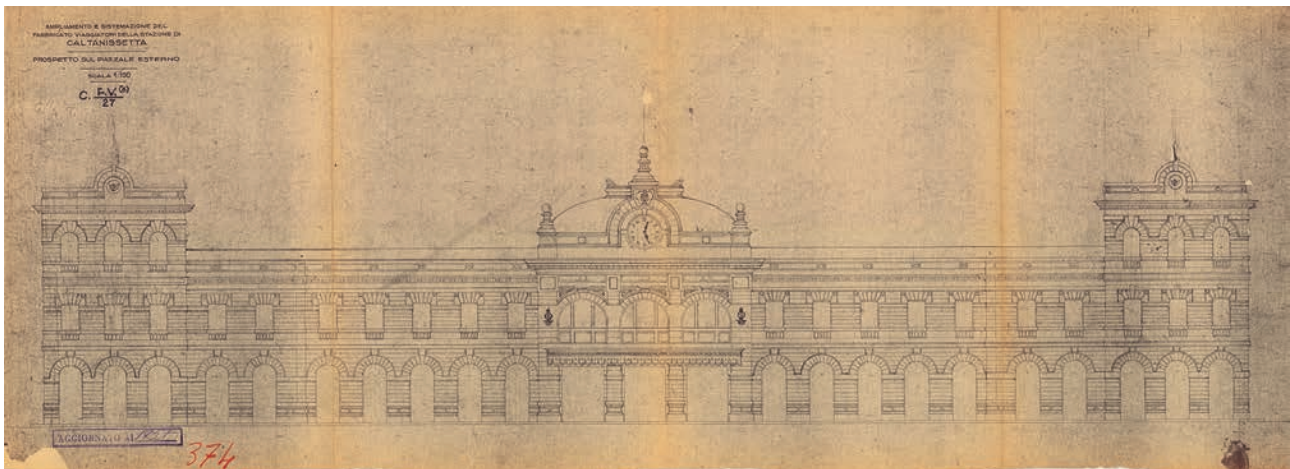


Figure 1 | Caltanissetta Centrale Station in Archivio Fondazione FS Italiane, collection Disegni di stazioni, “Stazione di Caltanissetta Centrale”, f. 376.

1869, was assumed to be in Calcare street; however, the distance from the centre inevitably entailed a variant, which was located near the built-up area, providing greater accessibility through a straight avenue (Sessa, 2004). Over the years, given its central location, the station has been subject to continuous evolution, adapting to the needs and urban transformations of the city. Archival documents, in fact, show how several studies were conducted to make changes to the structure, including in 1921 (Lima, 2004), a very articulate and complex project of which, however, to date, no photographic evidence ascertaining its realisation has been received. Differently, there is a historical phase of the station, of uncertain date but certainly before the transformations undergone as a result of the realisation of the project in the actual state (Fig. 1), of which there are various old photos.

According to historical pictures of this period, the Caltanissetta Centrale Station had a modest and very simple structure. The station in the photos had a central volume slightly overhanging, with a characteristic iron canopy and the usual clock. The side volumes are symmetrical and somewhat set back, gradually progressing from two to one level. The ornaments on the facade are relatively modest: a broad stringcourse divides the first level, and small, plain cornices ornament the windows and entrances. More plasticity can be seen in the centre body, whose surface is articulated by two pilasters and framed by cantonal that are repeated, along the side, this makes it appear that there are more volumes.

Currently, the building has undergone an expansion by incorporating the previous structure into itself. The Caltanissetta Centrale Station is presently a single building that appears modulated in many volumes symmetrical to

the central core. The ornamentation is simple, and the overall impression is that of late modernism: the side bodies are marked by calibrated eurhythmics highlighted by slightly projecting stringcourses and variously moulded profiles at each level. The centre volume, which overhangs from the building's sides, has wide apertures compared to the overall architectural scheme and is surmounted by a pavilion-vaulted roof. The three entrances partition the main elevation and seem from a distance as three huge archways separated by a central canopy. The latter are defined by mouldings that repeat the ashlar of the side volumes, assuring the building's correct harmony and interconnection.

3. Processing historical images with photogrammetry: problems and open issues

Classical analytical photogrammetry has been dealing with the problem of processing historical images since their creation. More recently, the progress of new technologies has enabled the steps of calibration and orientation in the photogrammetric pipeline by performing them automatically. However, although the use of Structure from Motion (SfM), the position and orientation of the camera not always can be automatically estimated with these algorithms implemented on historical photographs. Calibrating these images is the key step and some critical factors could lead to processing failure.

The first problem is the difficulty of finding suitable material for photogrammetric processing with a good state of preservation (Condorelli and Rinaudo, 2018). Low archival quality due to inadequate procedures

during transport or storage of the film (humidity, temperature, etc.), as well as inaccurate processing of the original films or paper copies in the field laboratories, can lead to problems during digitisation. In most cases, there is no information about the scanning process. The result is poor image quality in terms of resolution and radiometry (haze, image darkness, uneven brightness); the absence of image information (acquisition period, method, and location); the difficulty of finding accurate data such as constraints or control points (Bitelli *et al.*, 2017; Zawieska *et al.*, 2017; Maiwald *et al.*, 2018). Another challenge is that the historical images stored in the archives were not recorded to be used for metric documentation purposes and 3D reconstruction. In most cases, they consist of press and personal memories. For this reason, the images may be incomplete or have occlusions caused by objects located in front of the building to be reconstructed.

The major problem is that often the camera settings and the film information are missing. Inaccuracies or the complete absence of metadata about the internal orientation (focal length, coordinates of the principal point, etc.) and the additional parameters (i.e., distortion) are the most important issues. The problems increase when images of the same object are taken with different types of cameras that differ in exposure and image capture and are used in the same reconstruction.

4. Methodology

Commercial software cannot process historical images that present the problems outlined above. This is because it does not allow the algorithms underlying the processing to be customised, generating problems that lead to the failure of image alignment. For this reason, open-source software was used for data processing in this research, in particular COLMAP (Schönberger and Frahm, 2016) open-source Structure from Motion (SfM) and Multi-View Stereo (MVS) algorithm implementation, developed by ETH of Zurich (<https://github.com/colmap/colmap>, 2022).

Generally, from the photogrammetric processing of historical images, a sparse or low-density point cloud is obtained. In some cases, the number and quality of photos were not sufficient to orient enough points to obtain a point cloud. This case is common considering the problems in finding historical images and their low resolution, as previously pointed out, that dramatically affects the photogrammetric reconstruction and the obtaining of the final point cloud. For this reason, the proposed workflow aims to extract the coordinates of specific feature points to use them as a metric basis for the 3D modelling phase.

The proposed workflow is reported in Fig. 2 and is divided into two main phases. The first one concerns the extraction of specific feature points during the SfM pipeline introducing a manual step in the automatic implementation. The second is the 3D modelling phase starting from specific coordinates extracted from the historical images.

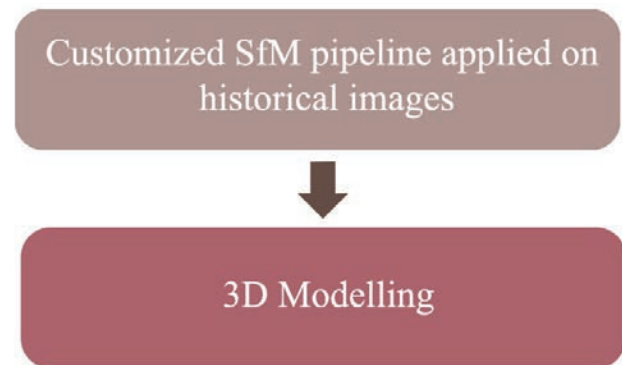


Figure 2 | The proposed workflow in which the first phase concerns the photogrammetric reconstruction of the object using a customised SfM pipeline applied to historical images, and the second phase concerns the 3D modelling of the object using feature points extracted during the previous step.

4.1 Proposed photogrammetric workflow using historical images

The standard SfM sequential processing pipeline for the iterative reconstruction in COLMAP is:

1. *Feature Detection and Extraction* that finds sparse feature points in the image;
2. *Feature Matching and Geometric Verification* that finds correspondences between the feature points in different images;
3. *Structure and Motion Reconstruction*, performed to obtain the final point cloud.

This standard pipeline was customised to extract the coordinates of specific points from historical images.

The presence of some specific known points, selected by the human operator, will allow the correct modelling of the object of study.

An additional step of *Manual selection of Feature Points* (highlighted in red in Fig. 3) was added, after the *Feature Detection and Extraction* phase in order to manually select the tie points to use during the subsequent *Feature Matching and Geometric Verification* step.

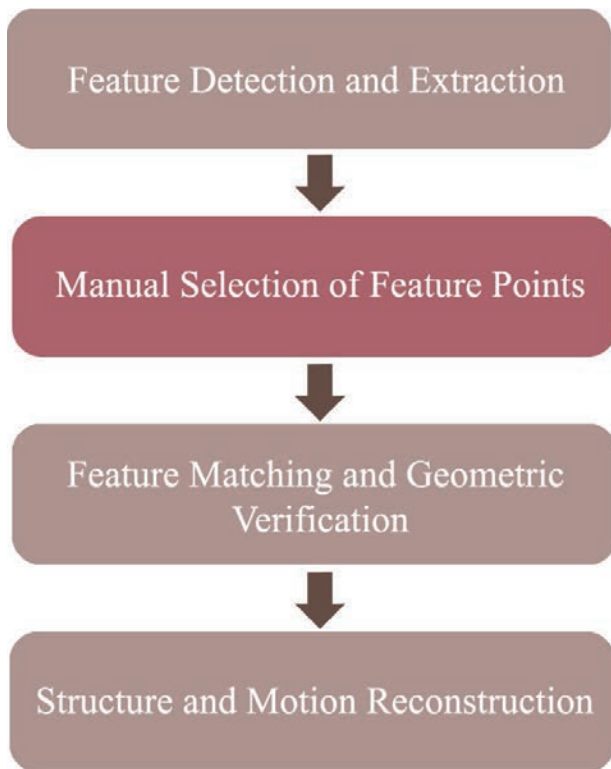


Figure 3 | Flowchart of the customised SfM pipeline applied on historical images in which a step (in red) of Manual selection of Feature Points was added to the standard SfM pipeline in COLMAP.

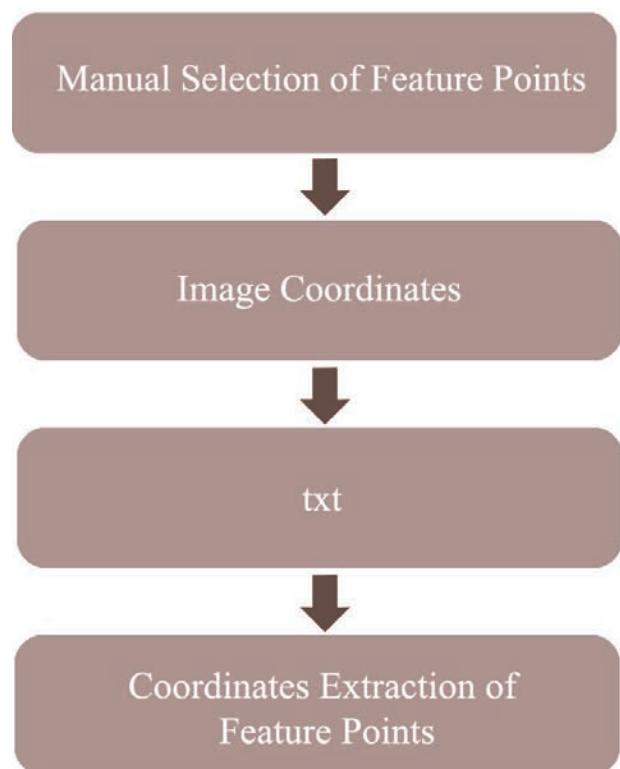


Figure 4 | Workflow of the Manual Selection of Feature Points.

The algorithm to detect and extract new features from images in COLMAP is deeply explained in Condorelli *et al.*, 2019. Here a summary is reported and sketched in Fig. 3. With the standard *Feature Detection and Extraction step*, COLMAP automatically detects key points in the images, but it could occur that some important radiometric corner in the picture, that also appears in other images, are missing. Introducing this step, it is possible to detect the feature point of interest manually and to extract their 3D coordinates.

The image coordinates of the searched point were measured with the WebPlotDigitizer tool (<https://automeris.io/WebPlotDigitizer>, 2022), as shown in Fig. 4, and inserted in the software. Data processed in COLMAP are stored in a customised database that can be easily managed.

It is possible to insert new coordinates of feature points not already detected by the automatic algorithm and that, for this reason, are not present in the database. Creating a text file in which the image coordinates (x, y) are expressed in pixels, and the scale and orientation information are indicated, writing one line per feature, it

is possible to import known features (e.g. single points) in the database and use them in the matching stage.

This assisted processing allows the choice and the filter of highlight points such as corners and outline features. The matching algorithm searches for the selected feature point in each image to estimate the equipolar line in the other pictures.

4.2 Reconstructive hypothesis

Digital reconstruction makes it possible to create three-dimensional models of architectures that no longer exist to document and disseminate knowledge of the works so that it can increase their enjoyment and facilitate the understanding of their history and that of the city. The modelling phase, however, must consider several issues, especially when working with architectures that have now disappeared and where the sources available are varied and often even contradictory. Paintings and archival documents are just some data necessary to be able to proceed with reconstructive hypotheses of an artefact, as well as textual descriptions from which to extract information on materials and technologies used in construction.

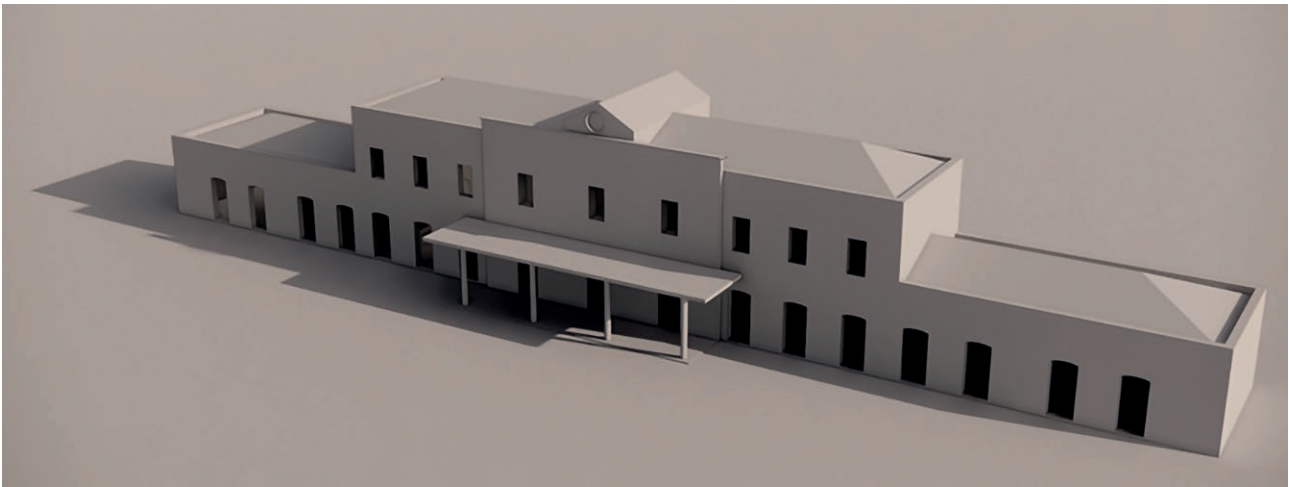


Figure 5 | Main volumes of Caltanissetta Centrale Station in its historical phase.

However, the sources found only sometimes correspond to what was accomplished over time, often making the representations unreliable. Unlike previous sources mentioned, photographic documentation is crucial for the historical analysis of an artefact as it helps to compare the sources with the reality of the time and, in this case study, to recover part of a heritage incorporated by the existing and no longer recognisable. Although the “revealed” buildings do not always present architectural features of great artistic prestige, they are valuable for the knowledge of architectural history and could also be important as a support for analysing urban changes in the city.

Three-dimensional modelling, in fact, has the advantage of making visual data of immediate impact and easy understanding as well as ensuring greater usability and accessibility; using 3D model, it is feasible to transmit information about a cultural heritage object, raise awareness of it, and develop new knowledge. Various software and methods exist for modelling cultural heritage that varies depending on the operator and object being worked on, as well as the levels of detail one wishes to pursue (Acosta, 2022; Cipriani, 2019).

In this case, the use of Non-Uniform Rational Basis Splines (NURBS) is considered advantageous for modelling the railway station. This type of modelling, in fact, has high flexibility and can adapt to a variety of profiles, both conventional geometric items and more complicated ones or those characterised by freeform typical of architectural decoration.

In the case study, the final model is generated with Rhinoceros software (version 6) by having as a basis the result obtained from the photogrammetric workflow

using historical images. Generally, once the sparse cloud is scaled on metric information, it is used as support for three-dimensional modelling. In the present case, however, it is only possible to identify characteristic points essential for identifying main metric measures and, therefore, extract the main volumes that make up the station building (Fig. 5). The next phase of modelling, such as adding decorations and details, is conducted using historical two-dimensional images (Fig. 6). In addition, the photos found have black and white colours, reasoning that it is difficult to trace the original appearance and information on texture and material of the station.

For this reason, the final restitution to have a digital image derived from the three-dimensional model and performed with the real-time render Enscape plug-in is developed by deliberately trying to set a colouring, which, at least in part, would resume the historical and vintage effect of the photos used in the photogrammetric process. Thus, the model ensures immediate communication of the building that is no longer visible and could be used as a basis for innovative visualisation methods of heritage.

5. Results and discussion

The proposed workflow is implemented on the chosen case study for the extraction of characteristic point coordinates needed to extrapolate key metric information useful for modelling purposes. A set of only seven historical black and white images was collected from web crawling and online sharing platforms, reasoning that the generation of a dense cloud did not. Following the results of each step of the workflow are reported. With *Feature Detection and Extraction*, sparse feature points



Figure 6 | Caltanissetta Centrale Station 3D model with main decorations and details.

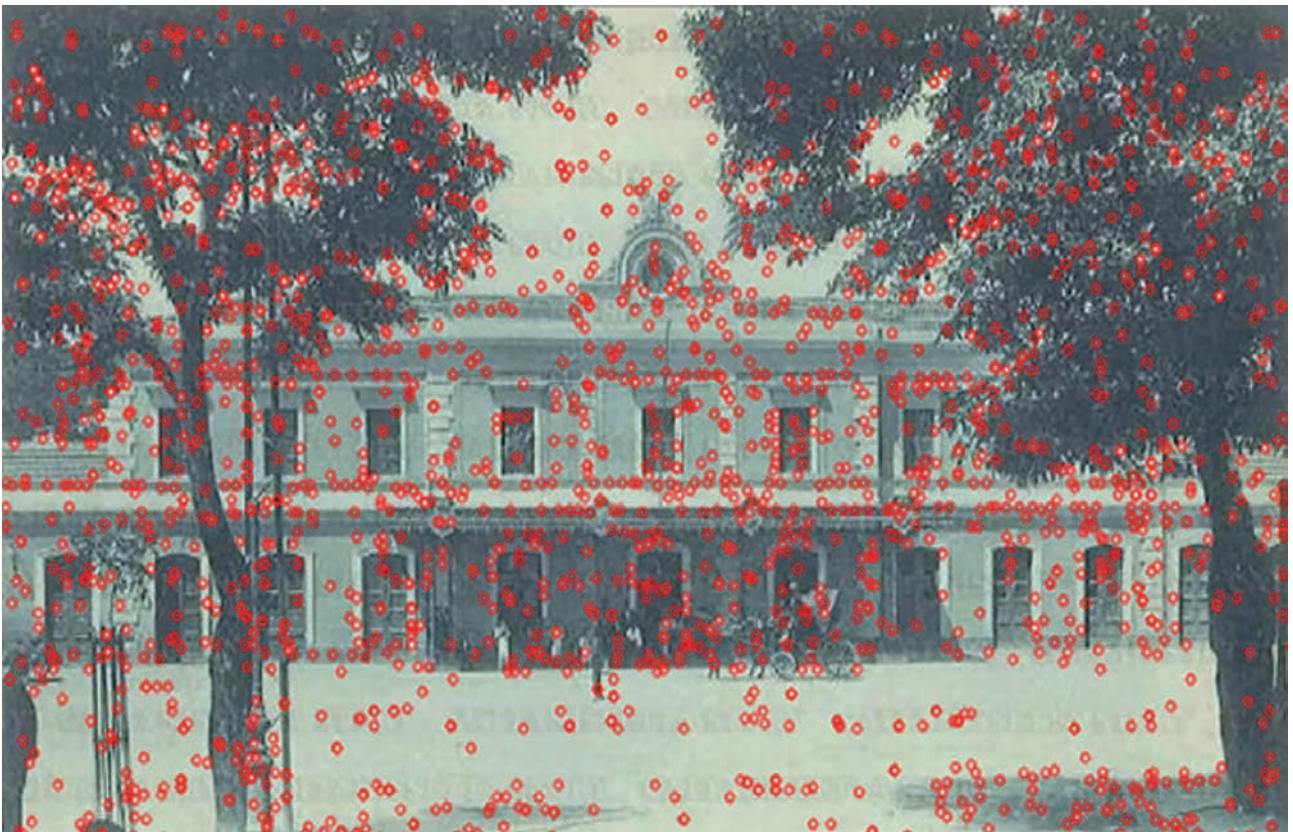


Figure 7 | Results of Feature Detection and Extraction.



Figure 8 | Results of the Manual Selection of Feature Points.



Figure 9 | Results of Feature Matching and Geometric Verification.

are automatically selected by the software in the image (Fig. 7). With the *Manual Selection of Feature Points* step four known points on the facade of the buildings are manually selected by the operator to ensure their presence in the final reconstruction. In Fig. 8, the results of this step are shown. The *Feature Matching and Geometric Verification* finds correspondences between the feature

points in different images both those manually and automatically selected (Fig. 9).

After the *Structure and Motion Reconstruction*, the coordinates of these points are extracted and used for the 3D modelling of the building. Selected feature points are in common between the old and the current state of the

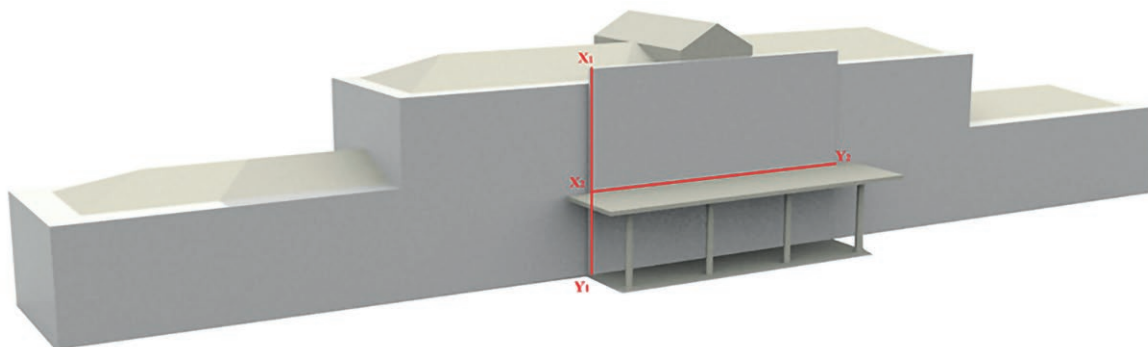


Figure 10 | Proportionate model based on the points extracted from the SfM.



Figure 11 | Rendered 3D model of the Caltanissetta Centrale Station.

station. For this reason, the coordinates of these points were measured both in the photogrammetric reconstruction and on the point cloud of the recent laser scanning survey, and these were used to scale the 3D model of the station before the transformation. The point coordinates extracted from the cloud were of particular importance for the modelling phase of the essential geometry that characterises the structure (Fig. 10). Since we did not have a dense point cloud but only discrete information, the modelling process was also based on decipherable assumptions from the collected images and comparison of the current state of the building (Fig. 11). The modelling performed by this method is, of course, a first step in the entire process in which following an initial extraction of the volumetric composition of the building one can, in subsequent studies, proceed to the generation of a complete and detailed 3D model of the entire building to be implemented in innovative applications.

6. Conclusions and future works

The research showed the potential of integrating photogrammetry from historical images with 3D modelling and the possibility of “survey” buildings that, due to various vicissitudes, have been modified over time. Specifically, based on metric references detected on the current state of the building and correspondences between old and new buildings, it was possible to scale the sparse cloud generated by the SfM process and subsequently employ it as the basis for modelling. However, since we could not operate directly on a dense cloud, for modelling we proceeded with the discretisation of information and on the export of point coordinates, from which distances could be derived. Although metric accuracy is difficult to ascertain, this method allows sufficiently proportionate modelling of the building. The results of this study, although still in the development stage, are very encouraging. In fact, working with historical images brings inherent difficulties, such as the lack of important

information about the camera, the quality of the film used to photograph it, and the absence of an accurate metric reference when the monument is lost. The results presented in this paper show that the proposed automatic workflow can be effective even under these critical conditions. This evaluation is interesting because it shows how available historical material can be used in the event of heritage destruction by guaranteeing some reliability of 3D reconstruction from historical images, considering limitations inherent in primary data. The proposed workflow also has the great advantage of being replicable in other case studies, for example, to reconstruct heritage destroyed by war or which has undergone major alterations. Future research will explore new ways to integrate recent data such as contemporary images with historical ones to improve the 3D reconstruction process.

Author Contributions

All authors F.C. and S.M. conceived the presented research, verified the analytical methods, and discussed the results. Both F.C. and S.M. wrote “Introduction”, and “Conclusions and future works”. F.C. developed the photogrammetric workflow and the relative images and wrote: “Methodology”, “Processing historical images with photogrammetry: problems and open issues” and “Proposed photogrammetric workflow using historical images”. S.M. analysed the case study, developed the 3D model and the associated images and wrote: “Case study: Caltanissetta Centrale Station”, “Reconstructive hypothesis” and “Results and discussion”.

References

- Acosta, E., Spettu, F., and Fiorillo, F. (2022). A procedure to import a complex geometry model of a heritage building into BIM for advanced architectural representations. *International Archives of The Photogrammetry, Remote Sensing and Spatial Information Sciences*, XLVI-2/W1-2022, pp. 9-16. <https://doi.org/10.5194/isprs-archives-XLVI-2-W1-2022-9-2022>.
- Agnello F. (2022). Perspective restitution from view cameras photos. *International Archives of The Photogrammetry, Remote Sensing and Spatial Information Sciences*, XLVI, pp. 17-24. <https://doi.org/10.5194/isprs-archives-XLVI-2-W1-2022-17-2022>
- Avella F. (2015). *Il gran caffè di Giuseppe Damiani Almeyda*. Caracol, Palermo.
- Barrale L, Milone M, Agnello F. (2022). From Image to Investigation 3D Reconstruction with Perspective Restitution. In: Prof. M.A. Ródenas-López, J.Calvo-López, M. Salcedo-Galera (eds) *Architectural Graphics Volume 2 - Graphics for Knowledge and Production*. Springer, pp. 83-92. https://doi.org/10.1007/978-3-031-04703-9_9
- Bitelli G., Dellapasqua M., Girelli V.A., Sbaraglia S., Tinia M.A. (2017). Historical photogrammetry and terrestrial laser scanning for the 3D virtual reconstruction of destroyed structures: a case study in Italy. *International Archives of The Photogrammetry, Remote Sensing and Spatial Information Sciences*, XLII-5/W1, pp. 113-119. <https://doi.org/10.5194/isprs-archives-XLII-5-W1-113-2017>
- Borin P., Giordano A., Panarotto F. (2018). Integration Between Perspective Images and BIM Models: Projective Geometry Is Still Alive. In: L. Cocchiarella (eds), *ICGG 2018 - Proceedings of the 18th International Conference on Geometry and Graphics. Advances in Intelligent Systems and Computing*, Vol 809, Springer, pp. 197-207. https://doi.org/10.1007/978-3-319-95588-9_15
- Cipriani L., Bertacchi S., Bertacchi G. (2019). An optimised workflow for the interactive experience with Cultural Heritage through reality-based 3D models: cases study in archaeological and urban complexes. *International Archives of The Photogrammetry, Remote Sensing and Spatial Information Sciences*, XLII-2/W11, pp. 427-434. <https://doi.org/10.5194/isprs-archives-XLII-2-W11-427-2019>
- Condorelli F., Rinaudo F. (2018). Cultural Heritage reconstruction from historical photographs and videos. *International Archives of The Photogrammetry, Remote Sensing and Spatial Information Sciences*, XLII-2, pp. 259-265. <https://doi.org/10.5194/isprs-archives-XLII-2-259-2018>
- Condorelli F., Higuchi R., Nasu S., Rinaudo F., Sugawara H. (2019). Improving performance of feature extraction in SfM algorithms for 3D sparse point cloud. *International Archives of The Photogrammetry, Remote Sensing and Spatial Information Sciences*, XLII-2/W17, 101-106. [10.5194/isprs-archives-XLII-2-W17-101-2019](https://doi.org/10.5194/isprs-archives-XLII-2-W17-101-2019)
- Garofalo E. (2020). Ritratti di architettura: rappresentazioni e rilievi di edifici del Trecento (XVIII-XIX secolo). In: G. Travagliato, M.C. Di Natale (eds), *CHIAROMONTE: lusso, politica, guerra e devozione nella Sicilia del Trecento. Un restauro verso il futuro*. Palermo University Press, Palermo, 411-418.
- Girgenti, G.M., Antonino A. (2021). A 3D reworking of the urban transformations of Palermo in recent history for a hypothesis of a “city museum” based on digital visualizations. *International Archives of The Photogrammetry, Remote Sensing and Spatial Information Sciences*, VIII-M-1-2021, pp. 81-87. <https://doi.org/10.5194/isprs-annals-VIII-M-1-2021-81-2021>

- Lima A.I. (2004). Dalla nazionalizzazione agli anni Trenta ampliamenti e nuove realizzazioni in Sicilia. In: E. Godoli, A.I. Lima (eds) *Architettura ferroviaria in Italia. Novecento*. Dario Flaccovio Editore, Palermo, pp. 139-168.
- Maiwald F., Schneider D., Henze F., Münster S., Niebling F. (2018). Feature matching of historical images based on geometry of quadrilaterals. *International Archives of The Photogrammetry, Remote Sensing and Spatial Information Sciences*, XLII-2, pp. 43-650. <https://doi.org/10.5194/isprs-archives-XLII-2-643-2018>
- Morena S., Talenti S. (2021). Monoscopic Photogrammetry to Investigate the Buildings in the Period of Modernism in Salerno: The Case Study of Torquato Tasso High School. In: C. Bartolomei, A. Ippolito, S.H. Tanoue Vizioli (eds), *Digital Modernism Heritage Lexicon*. Springer Tracts in Civil Engineering, pp. 1089-1107. https://doi.org/10.1007/978-3-030-76239-1_47
- Rapp J.B. (2008). A geometrical analysis of multiple viewpoint perspective in the work of Giovanni Battista Piranesi: an application of geometric restitution of perspective. *The Journal of Architecture*, 13(6), pp. 701-736. <https://doi.org/10.1080/13602360802573868>
- Schönberger J.L., Frahm, J.M. (2016). Structure-from-motion revisited. *IEEE Conference on Computer Vision and Pattern Recognition*, CVPR 2016, Vol. 2016, pp. 4104-4113. <https://doi.org/10.1109/CVPR.2016.445>
- Sessa E. (2004). Un tardo liberty per le stazioni in Sicilia. In: E. Godoli, A.I. Lima (eds) *Architettura ferroviaria in Italia. Novecento*. Dario Flaccovio Editore, Palermo, pp. 169-186.
- Sutera D. (2009). Architettura dipinta. Prospetti chiesastici di Palermo in un quadro della collezione Alba di Siviglia. In: M.R. Nobile, S. Rizzo, D. Sutera (eds), *Ecclesia Triumphans. Architetture del Barocco siciliano attraverso i disegni di progetto XVII-XVIII secolo*. Caracol, Palermo, pp. 72-75.
- Zawieska D.O., Markiewicz J.S., Kopiasz J., Tazbir J., Tobiasz A. (2017). 3D modelling of the Lusatian Borough in Biskupin using archival data. *International Archives of The Photogrammetry, Remote Sensing and Spatial Information Sciences*, XLII-2/W3, pp. 665-669. <https://doi.org/10.5194/isprs-archives-XLII-2-W3-665-2017>



ITRUVIO

International Journal of
Architectural Technology and Sustainability

