

Molecular and biometric data on *Carabus (Macrothorax) morbillosus* Fabricius, 1792 (Coleoptera, Carabidae) from Mid Mediterranean areas

Mariastella Colomba¹, Gabriella Lo Verde², Fabio Liberto³,
Armando Gregorini¹, Ignazio Sparacio⁴

1 Department of Biomolecular Sciences, University of Urbino Carlo Bo, Via Maggetti 22, 61029 Urbino (PU), Italy **2** Dipartimento di Scienze Agrarie, Alimentari e Forestali (SAAF), Università degli Studi di Palermo, Viale delle Scienze edificio 5, 90128 Palermo, Italy **3** Via del Giubileo Magno 93, 90015 Cefalù (PA), Italy **4** Via Principe di Paternò 3, 90144 Palermo, Italy

Corresponding author: Mariastella Colomba (mariastella.colomba@uniurb.it)

Academic editor: Pavel Stoev | Received 5 April 2022 | Accepted 28 September 2022 | Published 2 November 2022

<https://zoobank.org/3713E09B-C25F-4DAB-B029-739318E042D4>

Citation: Colomba M, Lo Verde G, Liberto F, Gregorini A, Sparacio I (2022) Molecular and biometric data on *Carabus (Macrothorax) morbillosus* Fabricius, 1792 (Coleoptera, Carabidae) from Mid Mediterranean areas. ZooKeys 1127: 119–134. <https://doi.org/10.3897/zookeys.1127.84920>

Abstract

The present study was carried out using molecular and biometric data of *Carabus (Macrothorax) morbillosus* from mid-Mediterranean areas to determine additional information on basal relationships among its representative subspecies. To this aim, two different kinds of approach were employed, including a morphometric analysis of four morphological parameters (i.e., elytra length, elytra width, pronotum length, pronotum width) of 128 specimens, and a Bayesian genetic analysis of 44 cytochrome oxidase subunit I (COI) partial sequences (i.e., 38 examined for the first time and six retrieved from GenBank database). Representative populations of *C. (M.) morbillosus* were sampled in four countries, namely Italy, Malta, Spain, and Tunisia. The present findings support the validity of four *C. (M.) morbillosus* subspecies, specifically *C. (M.) m. alternans*, *C. (M.) m. bruttitanus*, *C. (M.) m. constantinus*, and *C. (M.) m. macilentus*, and redefine these subspecies' distributions. Notably, within the *C. (M.) m. constantinus* clade, two (i.e., Sardinia/Tuscany and Lampedusa) out of the three subgroups appear as homogeneous geographical groupings.

Keywords

Bayesian analysis, biogeography, carabids, COI, elytra, morphometric analysis, pronotum, taxonomy

Introduction

The genus *Carabus* Linnaeus, 1758 (Coleoptera, Carabidae) includes about 1000 species currently classified in over 91 subgenera. This genus is widespread in the Holarctic area but nearly all species are distributed in the Palearctic region including Japan, Iceland, Canary Islands, and North Africa, with only a few (11 species) in North America (Deuve 2004).

Carabids are mostly nocturnal predators represented by numerous brachypterous (i.e., wingless) species with low dispersal power, living in restricted areas, sometimes punctiform, and with extreme specialization towards particular environments (forests, grasslands, or agricultural landscapes) and prey (snails, earthworms, or caterpillars). Such a high degree of ecological differentiation is represented by numerous (morphological) subspecific forms (Březina 1999; Deuve 2004) but, despite the number of studies conducted so far (see Mossakowski 2003 and references therein; Osawa et al. 2004; Andújar et al. 2014), the global evolutionary history of this hyper-diverse genus still remains poorly understood.

Molecular genetic studies confirmed a substantial monophyly of the morphological subgroups of *Carabus* (Sota and Ishikawa 2004 and references therein; Deuve et al. 2012) which are subdivided into clades that diverged around 10 Mya (6.6–14.8). However, many issues on this topic remain unsolved, such as the correct dating of the speciation events using the molecular clock (Prüser and Mossakowski 1998; Andújar et al. 2012a, 2012b). In fact, following Andújar et al. (2012b), dates obtained either for the origin of the genus or for the split of different subgenera are in line with the hypothesis suggested by Deuve et al. (2012), whereas a recent study gives the origin of *Carabus* in the Eocene (Oppenoorth et al. 2021).

Within the large Carabidae family, speciation processes are probably due to geological and paleo-ecological events, and, for the Euro-Mediterranean area, they can be explained by the Eurasian forest fragmentation consequent to the Miocene climatic changes and subsequent Plio-Pleistocene climatic events (see also Prüser and Mossakowski 1998; Turin et al. 2003; Deuve et al. 2012). Particularly, during the Messinian salinity crisis (5.9–5.3 Mya), severe environmental changes occurred in the Mediterranean region leading to the reduction of tropical forests and to more xeric (hot and dry) habitats. Species which were adapted to tropical environments became extinct (Deuve 1998) and taxa (including *Carabus*) which resulted more suited to the new climatic conditions evolved and prevailed. More specifically, the colonization of mid-Mediterranean areas is testified by the dispersion of several taxa such as the subgenus *Macrothorax* Desmarest, 1850 (Prüser and Mossakowski 1998), the Corso-Sardinian *C. (Eurycarabus) genei* Gené, 1839, *C. (Macrothorax) planatus* Chaudoir, 1843 (today endemic of montane forests of northern Sicily), and a number of subspecies of *C. (Macrothorax) rugosus* Fabricius, 1792 and *C. (Rhabdotocarabus) melancholicus* Fabricius, 1798 (Turin et al. 2003).

The subgenus *Macrothorax* was described by Desmarest (1850) and includes a group of species morphologically and geographically well-isolated in Western Mediterranean.

This subgenus is considered a Tyrrhenian element, pre-Quaternary, whose diffusion and speciation are correlated with the Messinian salinity crisis and with the Plio-Pleistocene events (Jannel 1941; Antoine 1955; Darnaud et al. 1981; Casale et al. 1982; La Greca 1984; Vigna Taglianti et al. 1993; Vigna Taglianti 1998; Turin et al. 2003). *Macrothorax* comprises also populations that seem to have originated in more recent times or, likely, from passive transport (see Casale et al. 1989; Turin et al. 2003). The larva is of the rostilabrous type, which brings this subgenus closer to the groups of more oriental origin.

Currently (see Löbl and Löbl 2017) the species listed in the subgenus *Macrothorax* are:

- C. (M.) morbillosus* Fabricius, 1792 (S-France, S-Spain, N-Morocco, N-Algeria, N-Tunisia, Corse, Sardinia, Tyrrhenian central Italy, Southern Calabria, Sicily, Sicilian islands and Malta);
- C. (M.) rugosus* Fabricius, 1792 (S-Spain, Portugal, N-Morocco);
- C. (M.) aumontii* Lucas, 1849 (NE-Morocco, NW-Algeria), type species;
- C. (M.) planatus* Chaudoir, 1843 (Sicily);
- C. (M.) meurguesianus* Ledoux, 1990 (Morocco) (Fig. 1).

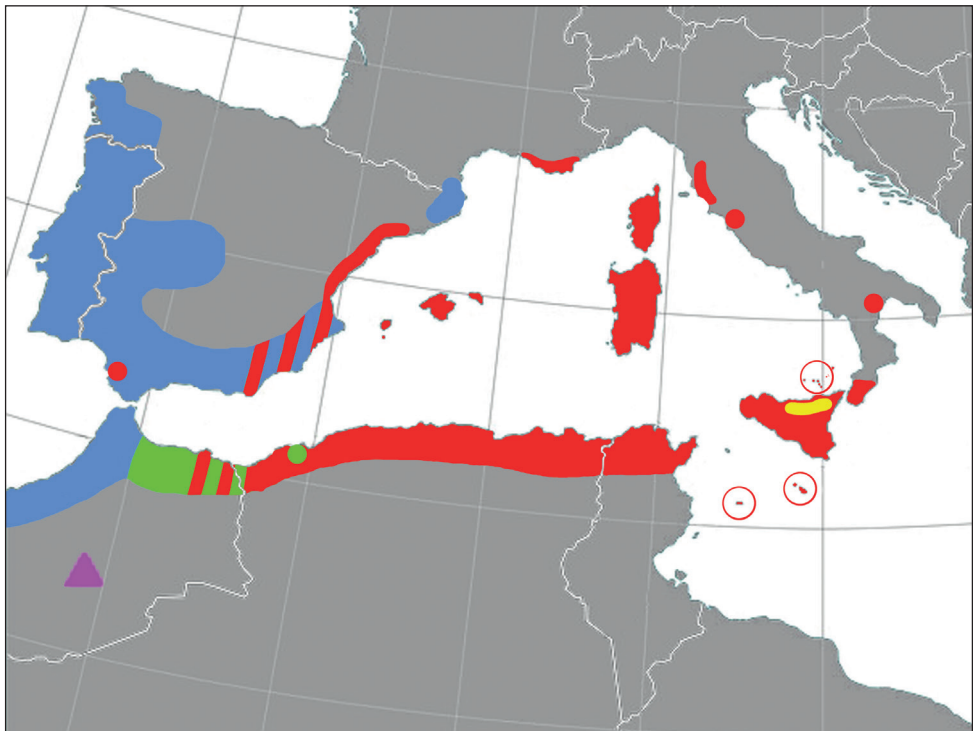


Figure 1. Distribution map of *Carabus (Macrothorax)* species in Mid Mediterranean areas. Red: *C. (M.) morbillosus*; yellow: *C. (M.) planatus*; blue: *C. (M.) rugosus*; green: *C. (M.) aumontii*; Purple triangle: *C. (M.) meurguesianus*.

These species live in varied habitats. *Carabus (M.) morbillosus* and *C. (M.) aumontii* mostly occur at low and medium altitudes in dense Mediterranean shrubland or palm forest soils with sufficient vegetation coverage, but also in areas with sparse vegetation or stony ground. *Carabus (M.) rugosus* and *C. (M.) planatus* are present in mountain and woodland environments.

With the exception of *C. (M.) planatus*, subspecies limited to well-defined geographic areas are ascribed to each of these species.

Considering only *C. (M.) morbillosus*, these subspecies include:

Carabus (M.) m. morbillosus Fabricius, 1792, locus typicus: “Mauretania” (Fabricius 1792).

Carabus (M.) m. alternans Palliardi, 1825, locus typicus: Sicilia (Palliardi 1825).

Carabus (M.) m. macilentus Lapouge, 1899, “sud de l’Espagne” (Lapouge 1899).

Carabus (M.) m. cychrisans Lapouge, 1899, NW-Algeria: Oran env. ? Maghnia (Lapouge 1899).

Carabus (M.) m. galloprovincialis Lapouge, 1910, locus typicus: Le Muy, Var, France (Lapouge 1910; Jannel 1941).

Carabus (M.) m. constantinus Lapouge, 1899, locus typicus: “Constantine [Algeria]” (Lapouge 1899).

Carabus (M.) m. bruttianus Born, 1906, locus typicus: “Calabria” (Born 1906).

Carabus (M.) m. arborensis Krausse, 1908, locus typicus: “Asuni [Sardinia, Italy]” (Krausse 1908).

Carabus (M.) m. corsicanus Lapouge, 1913, locus typicus: “Corsica” (Lapouge 1913).

Carabus (M.) m. lampedusae Born, 1925, locus typicus: “Lampedusa” (Born 1925).

Carabus (M.) m. cheminorum Deuve, 1988.

Many of these taxa are not accepted or have had different interpretations (Casale et al. 1982; Vigna Taglianti 1995; Březina 1999; Vigna Taglianti et al. 2002; Löbl and Smetana 2003; Turin et al. 2003; Deuve 2004; Vigna Taglianti 2009; Cavazzuti and Ghiretti 2020). The latest checklist of the Italian fauna reports *C. (M.) m. morbillosus* in Tuscany, Sardinia, and Sicily, *C. (M.) m. alternans* in Basilicata, Calabria, and Sicily, and *C. (M.) planatus* in Sicily (Casale et al. 2021).

The taxonomy and morphological characteristics of the main *morbillosus* subspecies accepted so far are briefly reported below.

Carabus (M.) m. morbillosus: N-Algeria SE-France (but the French populations were probably introduced from Kabylia: subsp. *cheminorum*). Pronotum widened anteriorly, sides arcuate, slightly narrowed anteriorly side, elytra elongate-ovate, subconvex, elytral sculpture with primary intervals catenulate, convex, 4th secondary interval evident, complete, tertiary intervals reduced, broken in rows of granulations, dorsal surface often darker and more polychromous, in some populations green to blue-violet.

Carabus (M.) m. macilentus: SE-Spain (Murcia, Catalonia), Algeciras (Cádiz), Balearic Islands. Pronotum narrowed anteriorly, the sides slightly arched, very short tertiary intervals, depressed elytra, cupreous dorsal surface normally dark, or greenish, the disc of the pronotum often blackish.

Carabus (M.) m. constantinus: NE-Algeria, Tunisia, Italy (Tuscany, Lazio: probably introduced), Sardinia, Corse, Lampedusa, SE-France (introduced probably from Corse). Elytra more convex; intervals less convex, 4th secondary interval fully reduced, tertiary intervals granulated but more evident than in the typical form, dorsal surface more constantly metallic bronze to reddish-cupreous.

Carabus (M.) m. alternans: Sicily, Calabria (Aspromonte), Basilicata, Malta. This population is differentiated from the other populations by a large shiny pronotum flattened posteriorly, with maximum width at middle and constricted forward; primary intervals elongated and slightly salient, secondary ribs depressed, tertiary intervals less raised than secondary ones, 1st elytral interstria deeply punctured with points sometimes juxtaposed; apex of aedeagus relatively short and wide, elytra elongate, rounded and dilated in the rear third, elytra apex short and slightly sinuate at sides.

A few years ago, Rapuzzi and Sparacio (2015) proposed the validity of *C. (M.) m. lambedusae* (Lampedusa) and *C. (M.) m. bruttianus* (S-Calabria, NE-Sicily: Messina and surrounding areas, Aeolian Islands).

Carabus (M.) m. lambedusae is similar to *C. (M.) m. constantinus* but shows a large and convex body shape and is less bright in color. Dark pronotum with basal sulci large and deep, side sinuate before hind angle, primary intervals wider, 1st elytral interstria with points on the surface, well separated from each other.

Carabus (M.) m. bruttianus is similar to *C. (M.) m. alternans* but is smaller and convex on elytron apex, less shiny, pronotum narrower and slightly rounded forward with maximum width in the fore half, elytra evidently shorter and oval, primary intervals in granules shorter and less raised, elytron apex stretched and clearly sinuate at side.

Likewise, Müller and Mifsud (2017) described *C. (M.) m. gozomaltensis* Müller & Mifsud, 2017 from Malta and Gozo Islands. These Maltese populations appear to be characterized by a smaller size and a darker coloration of the surface than Sicilian specimens, and a particular male genitalia structure.

To date interpretation of *C. (M.) morbillosus* subspecies remains elusive. To contribute to this problem, we used both a morphometric analysis of four morphological characters (i.e., elytra length, elytra width, pronotum length, and pronotum width), and a genetic analysis of a fragment of the cytochrome oxidase subunit I (COI) gene to determine additional information on the basal relationships among representative populations of *C. (M.) morbillosus* in mid-Mediterranean areas. Our focus was on populations inhabiting central mainland Italy, Sardinia, Sicily, circum-Sicilian islands, Malta, Spain, the Balearic Islands, and Tunisia.

Materials and methods

Materials

A total of 128 *Carabus (M.) morbillosus* male specimens were studied in the morphometric analysis. Samples were collected in Italy (Lampedusa, Sardinia, Calabria,

Sicily, including four locations throughout the island, plus Messina province, which is interesting for its biogeographical connections with Calabria), Tunisia, and the Balearic Islands.

Morphometric analysis

For each specimen four characters were measured: length of elytra (**EL**), width of elytra (**EW**), length of pronotum (**PL**), width of pronotum (**PW**).

Morphometric characters were used in an exploratory cluster analysis (complete linkage, Euclidean distance) to determine if the combinations of biometric characters allow to delimit groups concordant with the subspecies. Afterwards, a discriminant analysis was performed to assess the usefulness of the recorded variables to identify groups. A principal component (**PC**) analysis was then performed using the same four morphometric factors. Since one character (PL) was not available for one specimen from Sardinia, 127 male specimens were used for the analyses. Moreover, analysis of mean differences of morphometric characters among groups was then performed with ANOVA, after data normalization by means of a Box-Cox transformation. All analyses were concluded with Tukey *post hoc* tests to compare the groups for each character ($p < 0.05$). Minitab software has been used throughout for all statistical analyses.

Molecular analysis

Molecular analysis was performed on 38 specimens of *C. (M.) morbillosus* from several localities: Malta [(collection site not available, (CMAL)]; Vizzini [Italy: Sicily (VIZ)]; Custonaci [Italy: Sicily (CUST)]; Corleone, Ficuzza [Italy: Sicily (FIC)]; Messina [Italy: Sicily (MES)]; Reggio Calabria [Italy: S-Calabria (RCAL)]; Lipari [Italy: Aeolian Islands (LIP)]; Olmedo Prepalzos [Italy: N-Sardinia (OLM)]; Capoterra and Is Cannoneris [Italy: S-Sardinia (SARD)]; Follonica [Italy: Tuscany (FOL)]; Castiglione della Pescaia [Italy: Tuscany (CAST)]; Lampedusa [Italy: Sicily, Pelagic Islands, (LAMP)]; Cap Gammarth (Tunisia (CGAM)]; Ses Mongetes, Citadella de Menorca [Spain: Balearic Islands, Menorca (MEN)]; and Lloc de Monges, [Spain: Balearic Islands, Menorca (MON)] (Fig. 2).

Samples were stored at $-20\text{ }^{\circ}\text{C}$ in test tubes. Total genomic DNA was isolated from a small piece of tissue taken from the ethanol-preserved specimens. The extractions were carried out using the Wizard Genomic DNA Purification Kit (Promega). All the DNA extractions were kept at $4\text{ }^{\circ}\text{C}$ for short-time use. Undiluted or different dilutions (1:10–1:50, based on the DNA concentration) of each DNA extraction were used as templates for PCR amplification of a portion of the cytochrome oxidase subunit I (mt-COI) gene.

COI amplicons were obtained by the universal internal primers LCO1490 and HCO2198 as in Folmer et al. (1994) by the following PCR protocol: $95\text{ }^{\circ}\text{C}$ for 5 min; $95\text{ }^{\circ}\text{C}$ for 1 min, $50\text{ }^{\circ}\text{C}$ for 1 min, $72\text{ }^{\circ}\text{C}$ for 1 min (35 cycles); $72\text{ }^{\circ}\text{C}$ for 10 min. To remove primers and unincorporated nucleotides, the amplified products were purified by the Wizard SV gel and PCR Clean-up Kit (Promega). Sequencing of the

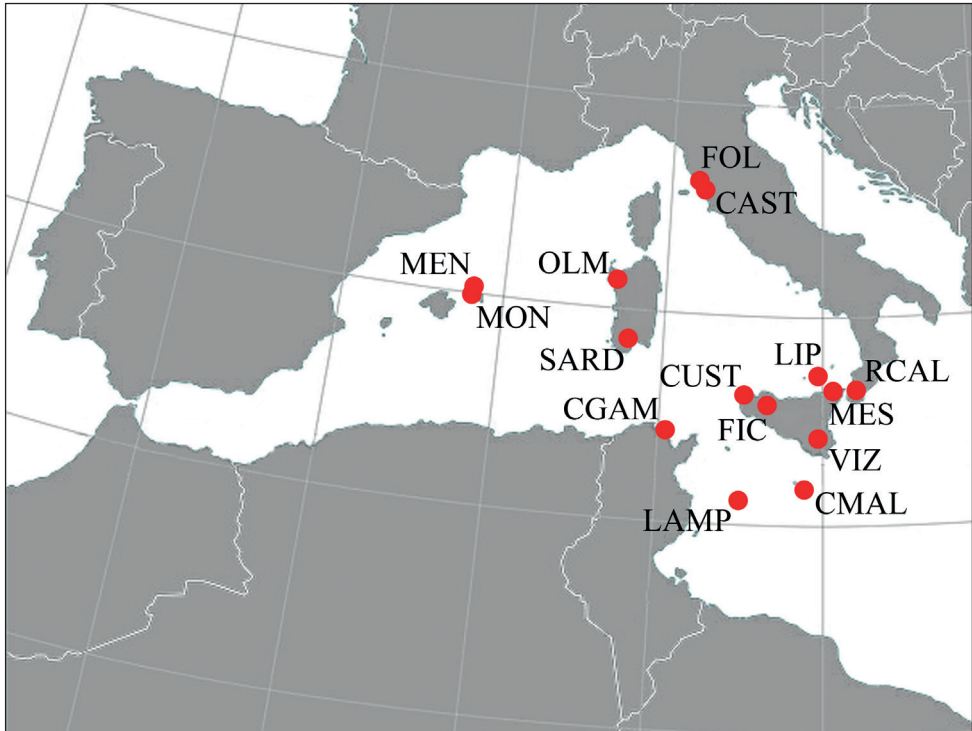


Figure 2. Collection sites of *C. (M.) morbillosus* specimens employed for molecular analyses are reported as red dots. Details and locality labels are described in the text.

purified PCR products was carried out using automated DNA sequencers at Eurofins MWG Operon (Germany). Sequence chromatograms of each amplified fragment were browsed visually. Sequences were visualized with BioEdit Sequence Alignment Editor 7 (Hall 1999), aligned with the ClustalW option included in this software and double checked by eye.

All sequences generated in the present study were deposited in NCBI GenBank (OM681023–OM681060).

Phylogenetic analyses were conducted in BEAST 1.6.1 (Drummond and Rambaut 2007) with 10×10^6 generations and 10% burnin. The best-fit evolution model of nucleotide substitution resulted in HKY+G ($\gamma = 0.128$) with empirical base composition; the Yule Process tree prior for mitochondrial data with piecewise linear population size model was applied with a UPGMA-generated tree as the starting point. Trees were combined to produce an ultrametric consensus tree using TreeAnnotator 1.6.1. Support for nodes is expressed as posterior probabilities.

In addition, homologous sequences (retrieved from GenBank) of *Carabus rugosus* (JQ689882, JQ689892), *C. morbillosus alternans* (JQ646591), *C. morbillosus* (JQ689896–JQ689898, JQ689883, JX279622), *C. planatus* (JQ646589), *Calosoma sycophanta* (JQ693413), and *Cychrus semigranosus* (JQ689876) were included. *Campalita auropunctatum* (JQ689899) was used as outgroup (OG).

Results

Morphometric data

The dendrogram obtained from the cluster analysis (Fig. 3) highlights the localities which clearly group together. These are: (i) Messina/Calabria; (ii) Spain/Balearic Islands; and (iii) Tunisia/Lampedusa, corresponding respectively to the subspecies *C. (M.) m. bruttianus*, *C. (M.) m. macilentus*, and *C. (M.) m. constantinus*. The population from Sardinia, based on the morphometric characters used, would seem closer to the Sicilian population [*C. (M.) m. alternans*], although this requires further investigation, which certainly needs to consider other additional morphological characters. Moreover, despite the morphometric similarity between the populations from Tunisia and Lampedusa, we prefer to consider these two populations as separate groups in the following biometric analyses, thus analyzing separately all the populations which have been alternatively included in the *C. (M.) m. constantinus* group (Sardinia, Tunisia, and Lampedusa).

The results of the discriminant analysis, conducted on the groups from Sicily, Sardinia, Tunisia, Lampedusa, Messina/Calabria, and Spain/Balearic Islands, reveals that the proportion of correct attribution is 0.646 (Table 1). A higher correct classification of samples was found for Messina/Calabria and Spain/Balearic Islands (0.85 and 0.78, respectively), while the highest misclassification was found for Sardinia, with less than 50% correctly classified. For all the other populations, the proportion of correct classification ranged between 0.54 (Tunisia) and 0.61 (Lampedusa), thus confirming the need of a more comprehensive approach for a better characterization. The linear discriminant function shows that PL was the most relevant parameter in the group attribution, followed by EL and PW, while EW resulted the less discriminant parameter.

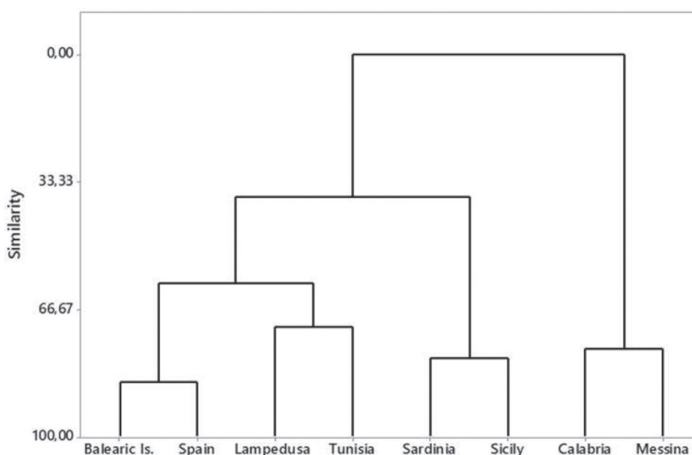


Figure 3. Similarity tree obtained from the cluster analysis based on the means of the four morphometric parameters. Morphological characters measured were as follows: elytra length, elytra width, pronotum length, pronotum width.

Table 1. Classification of *Carabus (Macrothorax) morbillosus* male specimens of the different groups determined by the discriminant analysis performed on all parameters. Coefficients of the discriminant function show the impact of each parameter in the correct attribution to the four groups.

	Lampedusa	Messina/Calabria	Sardinia	Sicily	Spain/Balearic Is.	Tunisia
Lampedusa	14	0	3	1	0	4
Messina/Calabria	0	28	2	4	3	0
Sardinia	1	1	8	2	0	1
Sicily	1	3	5	11	0	0
Spain/Balearic Is.	2	1	2	2	14	1
Tunisia	5	0	0	0	1	7
Total <i>N</i>	23	33	20	20	18	13
<i>N</i> correct	14	28	8	11	14	7
Proportion	0.61	0.85	0.4	0.55	0.78	0.54
<i>N</i> = 127		<i>N</i> correct = 82		Proportion correct = 0.646		
Linear Discriminant Function for groups						
	Lampedusa	Messina/Calabria	Sardinia	Sicily	Spain/Balearic Is.	Tunisia
Constant	-345.05	-274.38	-298.79	-303.67	-332.05	-366.62
Elytra width	-0.20	-0.16	-0.11	-0.08	-0.21	-0.20
Elytra length	2.20	1.73	1.84	1.86	2.01	2.27
Pronotum width	1.91	1.57	1.88	1.63	1.64	1.78
Pronotum length	2.24	2.84	2.43	2.71	2.97	2.56

Table 2. Biometrics (mean \pm S.E.) of males of the different *Carabus (Macrothorax) morbillosus* groups. Different letters within the column indicate significant differences among group means (One-way ANOVA performed after Box-Cox transformation of data: EW $F_{5,122} = 11.52$; EL $F_{5,122} = 46.58$; PW $F_{5,122} = 22.94$; PL $F_{5,121} = 10.84$ followed by Tukey post-hoc test, $p < 0.05$).

Groups	No.	EW \pm SE (min-max)	EL \pm SE (min-max)	PW \pm SE (min-max)	PL \pm SE (min-max)
Calabria/Messina	33	103.94 \pm 2.36 c (86–150)	166.45 \pm 1.14 d (151–178)	71.55 \pm 0.61 d (65–81)	58.36 \pm 0.40 b (55–63)
Spain/Balearic Is.	18	108.28 \pm 0.94 bc (100–114)	184.72 \pm 1.79 b (170–200)	77.72 \pm 1–16 bc (70–88)	63.33 \pm 0.63 a (59–68)
Tunisia	13	116.62 \pm 1.99 ab (105–130)	197.31 \pm 2.97 a (180–220)	82.38 \pm 1.06 a (77–90)	63.85 \pm 0.96 a (59–70)
Lampedusa	23	113.43 \pm 1.51 ab (100–133)	191.43 \pm 1.70 ab (180–210)	81.61 \pm 1.09 ab (74–90)	60.65 \pm 0.96 b (54–70)
Sardinia	21 (20 for PL)	124.71 \pm 5.28 ab (99–170)	175.57 \pm 1.79 c (153–190)	77.60 \pm 0.70 c (70–82)	58.57 \pm 0.72 b (53–64)
Sicily	20	131.00 \pm 5.48 a (98–180)	177.25 \pm 1.44 c (166–192)	76.15 \pm 0.85 c (70–82)	60.45 \pm 0.34 ab (58–64)

Results of the statistical analysis for the examined morphometric parameters are reported in Table 2. Significant differences among groups were found for all considered parameters. The group of specimens from Calabria/Messina shows significantly lower values in three out of four parameters (EW, EL, and PW), confirming that *C. (M.) m. bruttianus* is clearly smaller than the other three groups. Sicily and Sardinia differed from Lampedusa and Tunisia for EL and PW. As expected, no significant differences were found between Sicily and Sardinia and between Tunisia and Lampedusa for all morphometric characters.

The PC analysis indicates that the four morphometric characters explained 83.2% of all variance, mainly related to PL, PW, and EL (PC1, 61.6%) (Fig. 4). Despite the overlapping of the different groups, the PC2 (mainly related to EW) seems to have a more relevant role in the two populations from Sicily and Sardinia compared to Lampedusa, Tunisia, and Spain/Balearic Islands.

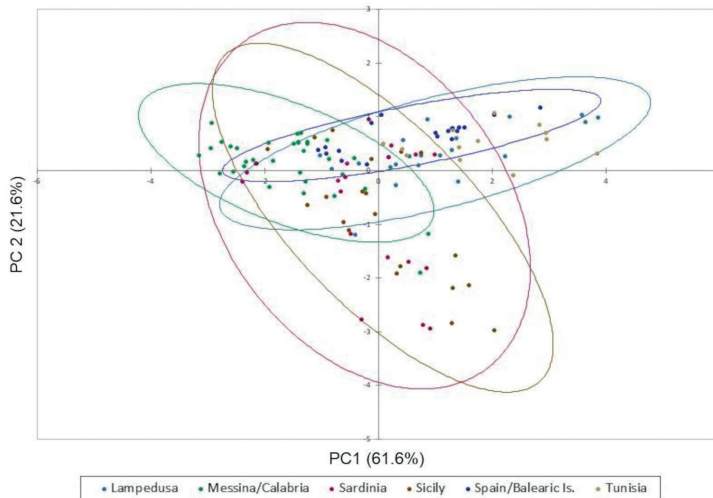


Figure 4. The principal component analysis applied to morphometric characters explained 83.2% of all variance. The first principal component (61.6%) is related to PL, PW and EL, whereas the second one (21.6%) is related to EW.

Molecular data

As shown in Fig. 5, the Bayesian analysis using COI partial sequences reveals several clearly distinct clusters. It is possible to distinguish the different genera included in the study, in particular, the genus *Calosoma* (represented by *Calosoma sycophanta*), the genus *Carabus* (represented by the species *C. (M.) rugosus*, *C. (M.) morbillosus* spp., and *C. (M.) planatus*), the genus *Cychrus* (represented by *C. semigranosus*), and the genus *Campalita* (represented by *C. auropunctatum*, which in our analysis was chosen as the outgroup). Relationships between these genera are supported by a clear tree topology with high posterior probability values at the main nodes. Among *Carabus* species, posterior probability values are very high, and affinity relationships can be easily deduced from the tree topology. *Carabus (M.) rugosus* is sister of *C. (M.) morbillosus*, with *C. (M.) planatus* slightly more distant and sister of the clade *C. (M.) rugosus*/*C. (M.) morbillosus*. At the subspecific level, it is possible to clearly distinguish within *C. (M.) morbillosus* four clusters: the first contains the sequences of the specimens from Malta and Sicily together with a sequence retrieved from GenBank database (JQ646591) of a specimen sampled in “Italy” and reported as *C. morbillosus alternans*. According to our interpretation, this cluster contains specimens that can be ascribed with reasonable certainty to the subspecies

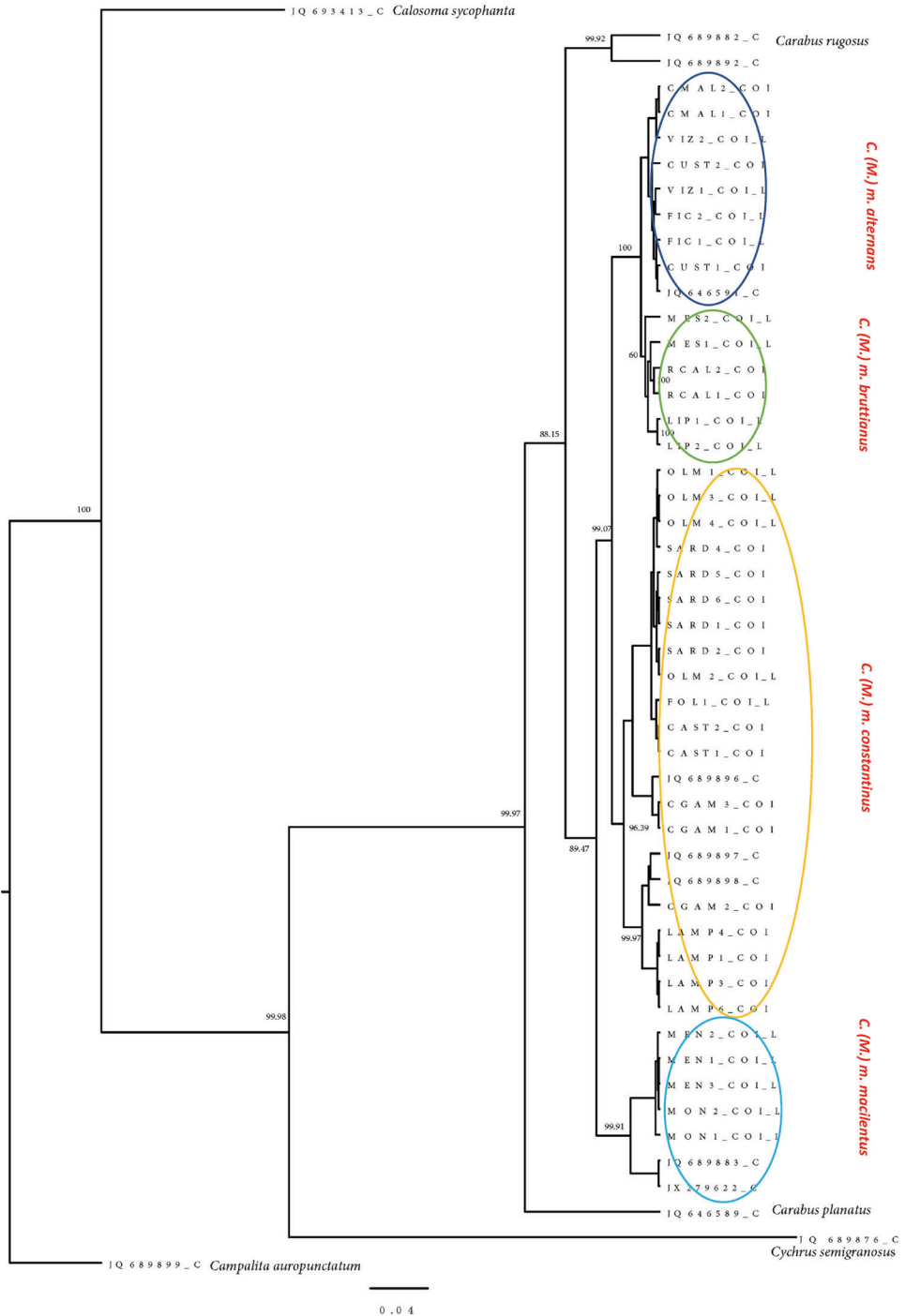


Figure 5. 50% majority rule Bayesian tree inferred from dataset including partial sequences of the mitochondrial COI genes available in the present paper along with homologous sequences retrieved from GenBank (see text for details). Nucleotide substitution model: HKY + G (gamma = 0.128). Numbers above branches represent Bayesian posterior probabilities. Scale bar represents units of length in expected substitutions per site.

C. (M.) m. alternans. The second group includes specimens from Messina (NE-Sicily), Reggio Calabria (S-Calabria), and Lipari (Aeolian Islands) and, in our opinion, these specimens belong to the subspecies *C. (M.) m. bruttitanus*. The third group includes specimens from Sardinia, Tuscany, Tunisia, and Lampedusa plus three sequences (from Tunisia) from GenBank (JQ689896–JQ689898). This group, which is the biggest one, represents the subspecies *C. (M.) m. constantinus*. Finally, the fourth group includes specimens from the Balearics plus two sequences (JQ689883 and JX279622) from Spain reported as *C. morbillosus*. This group, in our interpretation, represents the subspecies *C. (M.) m. macilentus*. As regards the distances expressed in *p* distance (i.e., number of nucleotide substitutions), the subspecies *alternans* is 0.038 far from *constantinus*, and 0.045 from *macilentus*. A very small distance (0.014) separates *alternans* from *bruttitanus*.

Discussion

The results of the morphometric and molecular analyses in this study show a significant agreement between hypothesized relationships of taxa. Combining information from the similarity tree and the phylogenetic tree, the validity of the subspecies *alternans*, *bruttitanus*, *constantinus*, and *macilentus* is supported.

The subspecies *bruttitanus* is only separated by a small genetic distance (ca 1%) from *alternans*, but the subspecific rank is supported by the tree topology. In addition, a comparison between the Calabria/Messina clustering obtained with morphometric analysis and the MES+RCAL+LIP cluster in the Bayesian tree clearly supports the validity of the subspecies *bruttitanus*, as proposed by Rapuzzi and Sparacio (2015). As shown in Fig. 5, the posterior probability supporting the cluster is 60%. On closer examination, the RCAL and LIP sequences are very homogeneous (100%, each), so the overall posterior probability value drops to 60% due to the greater heterogeneity observed in the sequences of the Messina specimens. Given that it is probably necessary to analyze many more beetles from the hypothesized distribution area of *bruttitanus*, these results may be explained by Messina specimens having undergone more rapid molecular change than morphological change. This could explain the difference in COI despite being rather morphologically similar to continental ones.

Within the large clade *constantinus*, out of three subgroups, two homogeneous geographic groupings were found in Sardinia (including also Tuscany) and Lampedusa, whereas the third one (Tunisia) appears to be more heterogeneous. Of the Sardinian specimens, all individuals cluster within the *constantinus* group, while the morphometric analysis shows them to be closer to *alternans*.

The molecular similarity between Sardinian and Tuscan populations is in agreement with their morphological similarity which, depending on different hypotheses, is considered the result of ancient passive transport (i.e., by anthropogenic transport, perhaps by the Phoenicians; Casale et al. 1989; Turin et al. 2003) or native (Vigna Taglianti 1998). If we wanted to distinguish at the subspecific level the populations of Sardinia and central Italy (Tuscany), *arborensis* could be used. However, we are fully

aware that the present data do not allow us to draw any definitive conclusions, which is worth exploring in a future study.

Although Lampedusa specimens are all included in a homogeneous geographical subgroup, the subspecific rank is only partially supported by the tree topology using COI data. However, such an outcome does not necessarily affect the validity of the subspecies which was diagnosed morphologically. Combining molecular with morphological monophylies, a subgenus is supported, but more in-depth study is needed by analyzing more morphological characters, more beetle specimens, and more genes (at least one nuclear) to obtain a clearer insight on the evolutionary paths followed by *morbillosus* in Italy and Tunisia. Of course, this larger study must also include beetles from Algeria, northern Morocco, and southeastern Spain.

In conclusion, our results provide new evidence supporting the validity of the *C. (M.) morbillosus* subspecies, *C. (M.) m. alternans*, *C. (M.) m. bruttitanus*, *C. (M.) m. constantinus*, and *C. (M.) m. macilentus*, and we can redefine their distribution in mid-Mediterranean areas.

One latter consideration refers to *C. (M.) planatus* which was shown in the phylogenetic tree as the most distant *Macrothorax* species analysed. It is an endemic species that lives exclusively in the Nebrodi and Madonie woods of Sicily (Magistretti 1965; Bruno 1968; Rapuzzi 1992; Sparacio 1995; Busato and Casale 2004), at higher altitudes; externally, it looks like *C. (M.) rugosus* of Spain and Morocco. Darnaud et al. (1981) reported it as the most primitive species of the subgenus *Macrothorax*, in agreement with other authors (Prüser and Mossakowski 1998; Turin et al. 2003) who considered *C. (M.) planatus* as one of the most ancient species of the Mediterranean *Macrothorax*. This species was confused with *C. (M.) morbillosus* for many years (see Casale et al. 1982), despite that many authors, including Chaudoir (1843), noted that *C. (M.) morbillosus* and *C. (M.) planatus* are not the same species (see also Ragusa 1871, 1883, 1908, 1921; Vitale 1912), and this is worth further study.

Acknowledgements

We are grateful to all friends and colleagues who provided help and specimens used in the study. They are, in alphabetical order, Marcello Arnone, Marco Bastianini, Michele Bellavista, Giuseppe Maraventano, David Mifsud, Pietro Lo Cascio, Stefano Nappini, Roberto Pantaleoni, Elena Prazzi, Josep Quintana Cardona, Ivan Rapuzzi, and Marcello Romano. We also wish to thank José Serrano Marino for his comments and suggestions on the manuscript and Robert Forsyth for English revision.

References

Andújar C, Gómez-Zurita J, Rasplus J-Y, Serrano J (2012a) Molecular systematics and evolution of the subgenus *Mesocarabus* Thomson, 1875 (Coleoptera: Carabidae: *Carabus*), based

- on mitochondrial and nuclear DNA. *Zoological Journal of the Linnean Society* 166(4): 787–804. <https://doi.org/10.1111/j.1096-3642.2012.00866.x>
- Andújar C, Serrano J, Gómez-Zurita J (2012b) Winding up the molecular clock in the genus *Carabus* (Coleoptera: Carabidae): assessment of methodological decisions on rate and node age estimation. *BMC Evolutionary Biology* 12(1): e40. <https://doi.org/10.1186/1471-2148-12-40>
- Andújar C, Arribas P, Ruiz C, Serrano J, Gomez-Zurita J (2014) Integration of conflict into integrative taxonomy: fitting hybridization in species delimitation of *Mesocarabus* (Coleoptera: Carabidae). *Molecular Ecology* 23(17): 4344–4361. <https://doi.org/10.1111/mec.12793>
- Antoine M (1955) Coléoptères Carabiques du Maroc, I. Mémoire de la Société des Sciences Naturelles du Maroc 1: 1–177.
- Born P (1906) Über einige *Carabus*. Formen aus Calabrien. *Insekten-Börse* 23: 1–6.
- Born P (1925) *Carabus morbillosus lampedusae* nov. subsp. *Societas Entomologica* 7: 25–26.
- Březina B (1999) World Catalogue of the Genus *Carabus* L. Pensoft, Sofia-Moscow, 170 pp.
- Bruno S (1968) Distribuzione, morfologia ed ecologia del *Carabus (Macrothorax) planatus* Chaudoir, 1843 (Coleoptera, Carabidae, Carabinae). *Bollettino Accademia Gioenia di Scienze Naturali (Serie 4)* 9: 733–753.
- Busato E, Casale A (2004) Note sul ciclo biologico e sulla morfologia pre-immaginale di *Carabus (Macrothorax) planatus* Chaudoir, 1843, specie endemica dell'Appennino siculo (Coleoptera, Carabidae). *Studi Trentini di Scienze Naturali Acta Biologica* 81: 177–187.
- Casale A, Sturani M, Vigna Taglianti A (1982) Coleoptera Carabidae. I. Introduzione, Paussinae, Carabinae. *Fauna d'Italia, XVIII*. Edizioni Calderini, Bologna, 500 pp.
- Casale A, Bastianini M, Minniti M (1989) Sulla presenza in Toscana di *Carabus (Macrothorax) morbillosus* Fabricius (Coleoptera, Carabidae, Carabini) e sul suo significato zoogeografico. *Frustula Entomologica* 10(1987): 67–72.
- Casale A, Allegro G, Magrini P, Benelli A (2021) Insecta Coleoptera Carabidae. In: Bologna MA, Zapparoli M, Oliverio M, Minelli A, Bonato L, Cianferoni F, Stoch F (Eds) Checklist of the Italian Fauna. Version 1. <https://www.lifewatchitaly.eu/en/initiatives/checklist-fauna-italia-en/checklist/> [Last update: 2021-05-31]
- Cavazzuti P, Ghiretti D (2020) *Carabus* d'Italia. *Natura Edizioni Scientifiche*, Bologna, 380 pp.
- Chaudoir M (1843) Carabique nouveaux. *Bulletin de la Société Impériale des Naturalistes de Moscou* 16: 671–795.
- Darnaud J, Lecumberry M, Blanc R (1981) Coléoptères Carabidae, Genre *Macrothorax* Desmarest, 1850. *Iconographie Entomologique, Coléoptères*, planche 13: 8.
- Desmarest ME (1850) In: *Encyclopédie d'histoire naturelle ou traité complet de cette science d'après les travaux des naturalistes les plus éminents de tous les pays et de toutes les époques*; Buffon, Daubenton, Lacépède, G. Cuvier, F. Cuvier, Geoffroy Saint-Hilaire, Latreille, de Jussieu, Brongniart, etc., etc. Ouvrage résumant les observations des auteurs anciens et comprenant toutes les découvertes modernes jusqu'à nos jours. Par le D^r Chenu. Coléoptères cicindelètes, carabiques, dytisciens, hydrophiliens, sylphales et nitidulaires, avec la collaboration de M.E. Desmarest, secrétaire de la Société Entomologique. Marescq et Compagnie, Paris, [2 +] 312 pp. [+ 28 pls.]
- Deuve T (1998) Trois fossiles remarquablement conservés du Miocène de France, appartenant aux genres *Carabus* L. et *Ledouxnebria* nov. (Coleoptera, Carabidae et Nebriidae). *Bulletin*

- de la Société Entomologique de France 103(3): 229–236. <https://doi.org/10.3406/bsef.1998.17421>
- Deuve T (2004) Illustrated Catalogue of the Genus *Carabus* of the World (Coleoptera, Carabidae). Pensoft Publishers, Sofia–Moscow, 461 pp.
- Deuve T, Cruaud A, Genson G, Rasplus JY (2012) Molecular systematics and evolutionary history of the genus *Carabus* (Col. Carabidae). *Molecular Phylogenetics and Evolution* 65(1): 259–275. <https://doi.org/10.1016/j.ympev.2012.06.015>
- Drummond AJ, Rambaut A (2007) BEAST: Bayesian evolutionary analysis by sampling trees. *BMC Evolutionary Biology* 7(1): e214. <https://doi.org/10.1186/1471-2148-7-214>
- Fabricius JC (1792) *Entomologia systematica emendata et aucta. Secundum Classes, Ordines, Genera, Species adjectis Synonymis, Locis, Observationibus, Descriptionibus*. Tom. 1. Proft, Christian Gottlob, Hafniae, 330 pp. <https://doi.org/10.5962/bhl.title.125869>
- Folmer O, Black M, Hoeh W, Lutz R, Vrijenhoek R (1994) DNA primers for amplification of mitochondrial cytochrome c oxidase subunit I from diverse metazoan invertebrates. *Molecular Marine Biology and Biotechnology* 3: 294–299.
- Hall TA (1999) BioEdit: A User-Friendly Biological Sequence Alignment Editor and Analysis Program for Windows 95/98/NT. *Nucleic Acids Symposium Series* 41: 95–98.
- Jannel R (1941) Coléoptères Carabiques (Première partie). *Faune de France*, 39. Lechevalier, Paris, 571 pp.
- Krausse AH (1908) I Carabi sardi e i loro parenti. *Rivista Coleotterologica Italiana* 6: 175–179.
- La Greca M (1984) L'origine della fauna italiana. *Le Scienze* 187: 66–79.
- Lapouge G, Vacher de (1899) Phylogénie des *Carabus* (suite) V—Le groupe du Parreyssi. *Bulletin de la Société Scientifique et Médicale de l'Ouest* 8: 97–113.
- Lapouge G, Vacher de (1910) Phylogénie des *Carabus* (suite) 17. - Rectifications aux Memoirs 1–9. *Bulletin de la Société Scientifique et Médicale de l'Ouest* 17: 212–232.
- Lapouge G, Vacher de (1913) *Carabus* nouveaux o mal connus. *Miscellanea Entomologica* 9: 9–10.
- Löbl I, Löbl D [Eds] (2017) *Catalogue of Palaearctic Coleoptera. Archostemata–Myxophaga–Adephaga*. Vol. 1. Revised and updated edition. Brill, Leiden, Boston, [xxxiv +] 1443 pp.
- Löbl I, Smetana A [Eds] (2003) *Catalogue of Palaearctic Coleoptera. Volume 1. Archostemata–Myxophaga–Adephaga*. Apollo Books, Stenstrup, 819 pp. <https://doi.org/10.1163/9789004330290>
- Magistretti M (1965) *Coleoptera Cicindelidae, Carabidae*. *Fauna d'Italia*, VIII. Edizioni Calderini, Bologna, 512 pp.
- Mossakowski D (2003) Morphological or molecular systematics? A case study of *Carabus*. *European Carabidology 2003. Proceedings of the 11th European Carabidologist Meeting*. DIAS Report 114: 231–241.
- Müller A, Mifsud D (2017) Über die *Carabus*-Fauna der beiden Mittelmeerinseln Malta und Gozo (Coleoptera, Carabidae, Carabini). *Lambillionea* 117: 200–203.
- Opgenoorth L, Hofmann S, Schmidt J (2021) Rewinding the molecular clock in the genus *Carabus* (Coleoptera: Carabidae) in light of fossil evidence and the Gondwana split: a reanalysis. *PLoS ONE* 16(9): e0256679. <https://doi.org/10.1371/journal.pone.0256679>
- Osawa S, Su ZH, Imura Y (2004) *Molecular Phylogeny and Evolution of Carabid Ground Beetles*. Springer-Verlag, Tokyo, 197 pp. <https://doi.org/10.1007/978-4-431-53965-0>

- Palliard AA (1825) *Dissertatio inauguralis physiographica sistens descriptiones decadam duarum Carabiorum novorum et minus cognitorum* (Beschreibung zweyer Decaden neuer und wenig bekannter Carabiden). Heubner, Wien, [x + 44 +] 2 pp. <https://doi.org/10.5962/bhl.title.151802>
- Prüser F, Mossakowski D (1998) Low substitution rates in mitochondrial DNA in Mediterranean carabid beetles. *Insect Molecular Biology* 7(2): 121–128. <https://doi.org/10.1046/j.1365-2583.1998.72056.x>
- Ragusa E (1871) Breve escursione entomologica fatta sulle Madonie e nei boschi di Caronia. *Bollettino della Società Entomologica Italiana* 3: 366–380.
- Ragusa E (1883) Catalogo ragionato dei Coleotteri di Sicilia. *Il Naturalista Siciliano* 2: 193–199.
- Ragusa E (1908) Due giorni di caccia sulle Madonie. *Il Naturalista Siciliano* 20: 129–134.
- Ragusa E (1921) Coleotteri nuovi o poco conosciuti della Sicilia. *Bollettino della Società Entomologica Italiana* 51: 31–36.
- Rapuzzi I (1992) Contributo alla conoscenza sulla distribuzione geografica di *C. (Macrothorax) planatus* Chaudoir, 1843 in Sicilia. *Lambillionea* 92: 167–177.
- Rapuzzi I, Sparacio I (2015) New taxonomic data on some populations of *Carabus (Macrothorax) morbillo* Fabricius, 1792 (Coleoptera Carabidae). *Biodiversity Journal* 6: 107–114.
- Sota T, Ishikawa R (2004) Phylogeny and life-history evolution in *Carabus* (subtribe Carabina: Coleoptera, Carabidae) based on sequences of two nuclear genes. *Biological Journal of the Linnean Society* 81(1): 135–149. <https://doi.org/10.1111/j.1095-8312.2004.00277.x>
- Sparacio I (1995) *Coleotteri di Sicilia*. I. L'Epos Editore, Palermo, 256 pp.
- Turin H, Penev L, Casale A (2003) *The Genus Carabus in Europe*. A Synthesis. Pensoft Publishers, Sofia & European Invertebrate Survey, Sofia & Leiden, [xvi +] 512 pp.
- Vigna Taglianti A (1995) Coleoptera Archostemata, Adephaga 1 (Carabidae). In: Minelli A, Ruffo S, La Posta S (Eds) *Checklist delle specie della fauna italiana*. 44. Calderini, Bologna, 500 pp.
- Vigna Taglianti A (1998) I Carabidi nella faunistica e biogeografia. In: Vigna Taglianti A, Casale A (Eds) *Giornata di Studio su: filogenesi e sistematica dei carabidi*. *Atti della Accademia Nazionale di Entomologia* 46: 245–276.
- Vigna Taglianti A (2009) An updated checklist of the ground beetles (Coleoptera: Carabidae) of Sardinia. In: Cerretti P, Mason F, Minelli A, Nardi G, Whitmore D (Eds) *Research on the Terrestrial Arthropods of Sardinia (Italy)*. *Zootaxa* 2318: 169–196. <https://doi.org/10.11646/zootaxa.2318.1.7>
- Vigna Taglianti A, Audisio PA, Belfiore C, Biondi M, Bologna MA, Carpaneto GM, De Biase A, De Felici S, Piattella E, Racheli T, Zapparoli M, Zoia S (1993) Riflessioni sui corotipi fondamentali della fauna W-Paleartica ed in particolare italiana. *Biogeographia* 16: 159–179. <https://doi.org/10.21426/B616110375>
- Vigna Taglianti A, Casale A, Fattorini S (2002) I Carabidi di Sicilia ed il loro significato biogeografico (Coleoptera, Carabidae). *Bollettino dell'Accademia Gioenia di scienze naturali* 35 (361): 435–464.
- Vitale F (1912) Catalogo dei Coleotteri di Sicilia. *Rivista Coleotterologica Italiana* 10: 41–50.