



Article

# An Emerging Longevity Blue Zone in Sicily: The Case of Caltabellotta and the *Sicani Mountains*

Alessandra Errigo <sup>1,\*</sup>, Giovanni Mario Pes <sup>1</sup>, Calogero Caruso <sup>2</sup>, Giulia Accardi <sup>2</sup>, Anna Aiello <sup>2</sup>,  
Giuseppina Candore <sup>2</sup> and Sonya Vasto <sup>3,4</sup>

<sup>1</sup> Department of Medicine, Surgery and Pharmacy, University of Sassari, 09100 Sassari, Italy; gmpes@uniss.it

<sup>2</sup> Laboratory of Immunopathology and Immunosenescence, Department of Biomedicine, Neurosciences and Advanced Diagnostics, University of Palermo, 90134 Palermo, Italy; calogero.caruso@unipa.it (C.C.); giulia.accardi@unipa.it (G.A.); anna.aiello@unipa.it (A.A.); giuseppina.candore@unipa.it (G.C.)

<sup>3</sup> Department of Biological Chemical and Pharmaceutical Sciences and Technologies (STEBICEF), University of Palermo, 90128 Palermo, Italy; sonya.vasto@unipa.it

<sup>4</sup> Euro-Mediterranean Institute of Science and Technology (IEMEST), University of Palermo, 90139 Palermo, Italy

\* Correspondence: a.errigo@studenti.uniss.it; Tel.: +39-348-6948631

## Abstract

Blue Zones (BZs) are regions across the world associated with exceptional human longevity, where individuals routinely live into their 90s and beyond. These areas share distinct lifestyle and environmental factors that promote healthy aging. The established BZs include Sardinia, Okinawa, Ikaria, and Nicoya, while several “emerging” BZs have been reported in various parts of the globe. This study investigates an area in Sicily for similar longevity patterns. Demographic data from the Italy National Institute of Statistics and local civil registries identify the municipality of Caltabellotta, home to approximately 3000 residents, and the nearby *Sicani Mountains* as a potential emerging BZ. The area exhibits a significantly higher prevalence of nonagenarians and centenarians compared to national and regional averages. Between 1900 and 1924, the proportion of newborns in Caltabellotta who reached age 90 and above rose from 3.6% to 14%, with 1 out of 166 individuals during this period reaching the age of 100. Historical, dietary, environmental, and sociocultural characteristics align with known BZ traits, including adherence to the Mediterranean diet, physical activity through agrarian routines, strong social cohesion, and minimal environmental pollution. A comparative analysis with the validated Sardinia BZ supports the hypothesis that this Sicilian area may represent an emerging longevity hotspot. Further multidisciplinary investigation is warranted to substantiate these findings.

**Keywords:** longevity; Blue Zones; Sicily; health; environment



Academic Editor: Leonid A. Gavrillov

Received: 26 May 2025

Revised: 14 July 2025

Accepted: 26 July 2025

Published: 30 July 2025

**Citation:** Errigo, A.; Pes, G.M.; Caruso, C.; Accardi, G.; Aiello, A.; Candore, G.; Vasto, S. An Emerging Longevity Blue Zone in Sicily: The Case of Caltabellotta and the *Sicani Mountains*. *J. Ageing Longev.* **2025**, *5*, 26. <https://doi.org/10.3390/jal5030026>

**Copyright:** © 2025 by the authors. Licensee MDPI, Basel, Switzerland. This article is an open access article distributed under the terms and conditions of the Creative Commons Attribution (CC BY) license (<https://creativecommons.org/licenses/by/4.0/>).

## 1. Introduction

Human longevity has long fascinated scholars across multiple disciplines, including gerontology, public health, and anthropology. Although global life expectancy has risen consistently over the last century [1], certain geographical pockets, known as “Blue Zones” (BZs), stand out for their remarkably high concentration of individuals living well into their 90s and beyond [2]. The concept of BZs was introduced more than two decades ago, following the rigorous identification of a long-lived population in inland areas of Sardinia, Italy [3]. Since then, BZs have become focal points for studying the interplay of genetics, lifestyle, and environmental factors contributing to human longevity [4].

Following the formal recognition of the Sardinian BZ [3], other communities with similar demographic patterns have been discovered, including populations on the islands of Okinawa, Japan [5], and Ikaria, Greece [6], and the Nicoya Peninsula, Costa Rica [7]. These regions consistently show demographic indicators of longevity that significantly exceed national averages, thus supporting their classification as established BZs. For example, Okinawa's 1975 census recorded 37 centenarians in a population of 1.04 million (35.5 per million), roughly seven times the Japanese average of 5.1 per million [8]. The number of newborns reaching age 90 per 100,000 in the Sardinia BZ is 12,575 and 12,729 for men and women, respectively, versus 3506 and 8745 in mainland Italy [9]. Other BZs, including Nicoya (Costa Rica) and Ikaria (Greece), are similarly noted for longevity. Nicoya men, in particular, live far longer than average, and Ikaria has one of the world's lowest rates of middle-age mortality [7]. Across Europe, high longevity is concentrated in Mediterranean countries. France, Italy, and Greece each had over 20 centenarians per 100,000 inhabitants in 2011. These statistics underscore that Mediterranean communities support much higher proportions of very old individuals than national averages. Collectively, the data illustrate that BZ areas in Europe and around the world host an unusually large share of the oldest-old, highlighting the role of environmental and lifestyle factors in healthy aging. Other locations, such as the Cilento region in Southern Italy [10–12], a municipality in the Netherlands [13], and the island of Martinique in French Antilles, one of the overseas departments [14], have been identified as potential or emerging BZs, but conclusive evidence remains pending. A few years ago, a Chinese region was also proposed as a possible BZ based on the proportion of 90-year-olds [15]. By contrast, some regions considered potential candidates, including Menorca in the Balearics [16] and Southern California [17], have failed to meet the criteria for exceptional longevity. Notably, Loma Linda in California is often included among BZs despite a lack of comprehensive demographic validation [18].

Sicily, the largest Mediterranean island, is renowned for its complex demographic and cultural history shaped by millennia of migration and trade [19]. The island has been influenced by the Phoenicians, Greeks, Romans, Byzantines, Arabs, Normans, and other populations, each leaving an indelible mark on its cultural landscape [20]. The island population is also known for its adherence to a traditional Mediterranean diet, characterized by a high consumption of fruits, vegetables, legumes, and olive oil [21]. Despite its similarities to Sardinia in terms of diet and geography, Sicily has been less extensively studied for the presence of longevity clusters [22], although evidence of individuals who have reached extreme age and recent local surveys [23,24] suggest that inland Sicilian villages may share features with known BZs.

In recent years, specific areas of inland Sicily have attracted attention for demographic patterns that seem to mirror those of established BZs: small, rural towns exhibiting a disproportionately high number of nonagenarians and centenarians [22,23]. Many of these individuals not only reach advanced ages but also maintain good cognitive and physical function, continue to follow traditional dietary and lifestyle practices, and adhere strongly to the Mediterranean diet [21,23–25]. Despite these promising indicators, systematic research into the potential existence of longevity hotspots in Sicily remains limited. Much of the available data is anecdotal or derived from municipal civil registries, lacking the epidemiological consistency required to confirm such claims.

Furthermore, much of the existing literature on longevity primarily focuses on genetic or clinical determinants, while the synergistic role of environmental and sociocultural factors remains less explored. An interdisciplinary approach integrating community-based demography, environmental science, and nutritional epidemiology is therefore needed to uncover the drivers of healthy aging in this region.

The present study investigates whether specific areas in Sicily, particularly the *Sicani Mountains*, exhibit the characteristics of an emerging BZ. We compared the longevity metrics of this region with those of the validated BZ from Sardinia, since Sardinia represents a valid point of comparison for investigating the environmental, dietary, and sociocultural factors that may promote healthy aging. The findings also offer a basis for reflecting on broader conceptual and methodological challenges involved in defining a region of exceptional longevity when observed in an early stage of development.

## 2. Materials and Methods

### 2.1. Data Sources

To investigate the presence of potential longevity hotspots in Sicily, we employed a two-step approach based on (i) official national demographic statistics and (ii) local civil registry records from individual municipalities. As the identification of an area of “exceptional longevity” must be consistently based on demographic data, we proceeded as follows: We accessed population data through the Italian National Institute of Statistics (ISTAT) online database [26] by selecting the “Islands” area, the “Sicily” region, and subsequently, each province on the island. For every municipality, we retrieved the total population and the number of resident individuals aged 90 and over (90+) and those aged 60 and over (60+), and calculated the ratio 90+/60+ [2,27]. Using these data, we generated an initial geographical map representing the raw distribution of the proportion of residents aged 90 and over relative to the population aged 60+. Visual inspection of this map, as well as resorting to spatial statistical analysis, allowed us to detect clusters of municipalities in which the prevalence of nonagenarians was notably higher than in surrounding areas. Among the identified clusters, we selected the one with the highest 90+/60+ ratio for a more detailed investigation. To avoid choosing municipalities that are too small, where the presence of long-lived individuals may be coincidentally high, we listed all 391 Sicilian municipalities in decreasing order according to the 90+/60+ ratio and selected the first ones that exceeded 3000 inhabitants, i.e., the size required to have at least 80% statistical power at  $\alpha = 0.05$  to detect a 5% difference in comparisons.

Within the municipality exhibiting the highest 90+/60+ ratio, we surveyed the demography retrospectively. Using local civil status registers, we reconstructed annual birth cohorts from 1900 to 1924 and calculated, for each birth year, the proportion of individuals who had reached the age of 90. This enabled us to determine the year-specific probability of attaining age 90 among those born in the municipality during the early 20th century [3].

### 2.2. Statistical Analysis

We assumed a null hypothesis, that no areas of exceptional longevity exist in Sicily. To test this hypothesis, for the 391 municipalities, we calculated the 90+/60+ ratio. Next, the degree of global spatial autocorrelation was calculated for the 90+/60+ ratio according to Moran’s  $I$  index with inverse distance weighting using the open-source R software version 4.5.1 (R Core Team, Vienna, Austria, 2024). (<http://www.rproject.org/> accessed on 14 May 2025). Moran’s  $I$  is a measure of spatial autocorrelation developed by Patrick Alfred Pierce Moran [28] and defined as

$$I = \frac{N}{\sum_i \sum_j w_{ij}} \frac{\sum_i \sum_j w_{ij} (X_i - \bar{X})(X_j - \bar{X})}{\sum_i (X_i - \bar{X})^2}$$

where  $I$  represents Moran’s index,  $N$  the total number of spatial units (municipalities),  $X_i$  and  $X_j$  the 90+/60+ ratio in the municipality with coordinates  $i$ -th and  $j$ -th,  $\bar{X}$  the average

of 90+/60+ ratio across all municipalities, and  $w_{ij}$  the spatial weight matrix that represents the adjacency relationships of the spatial units.

Spatial autocorrelation reflects the overall distribution of a variable among adjacent locations in space. Moran’s  $I$  index assumes values  $> 0$  when the corresponding variable is spatially clustered and values  $< 0$  when it is dispersed. Its values were transformed into Z-scores to test the null hypothesis that the spatial autocorrelation of any variable included in the study was zero; when values are greater than 1.96 or smaller than  $-1.96$ , the null hypothesis is rejected, and the variable is considered spatially autocorrelated at the 5% threshold. The next step was to perform hotspot analysis to identify areas with significant clustering of high 90+/60+ ratio. The Getis–Ord  $G_i^*$  statistic was used according to Getis and Ord [29]. The formula is

$$G_i^* = \frac{\sum_j w_{ij} X_j - X \sum_j w_{ij}}{\sqrt{\frac{\sum_j X_j^2}{N} - X^2} \sqrt{\frac{N \sum_j w_{ij}^2 - (\sum_j w_{ij})^2}{N-1}}}$$

where the symbols are the same as Moran’s formula. The Getis–Ord  $G_i^*$  statistic is typically standardized into a Z-score, allowing statistical significance testing (e.g.,  $p$ -values).

Next, we estimated the probability of reaching age 90 for each annual birth cohort in the selected municipality between 1900 and 1924. This figure was calculated as the ratio of individuals aged 90+ to the number of births in the same year based on civil registry data. For comparative purposes, we analyzed equivalent data from the Sardinian BZ, specifically the seven municipalities previously identified as having the highest longevity in Sardinia [3]. For each calendar year, we computed the mean probability of reaching age 90 across these municipalities, along with standard deviations and 95% confidence intervals (CI), using the following formulas:

$$\text{Lower limit} = \hat{p} - z \times \sqrt{\frac{\hat{p} \times (1 - \hat{p})}{n}} \quad \text{Upper limit} = \hat{p} + z \times \sqrt{\frac{\hat{p} \times (1 - \hat{p})}{n}}$$

where  $p$  is the probability of reaching 90 years and  $z$  is the critical value that depends on the confidence level, assumed to be equal to 1.96 [30]. The mean values of the probability of reaching 90 years of age for each person born in the selected municipality from 1900 to 1924 were plotted together with the 95% confidence interval calculated for the top seven longevity municipalities of Sardinia. These analyses were performed in Excel and SPSS 22 (Chicago, IL, USA).

### 3. Results

#### 3.1. Longevity Patterns Across Sicily

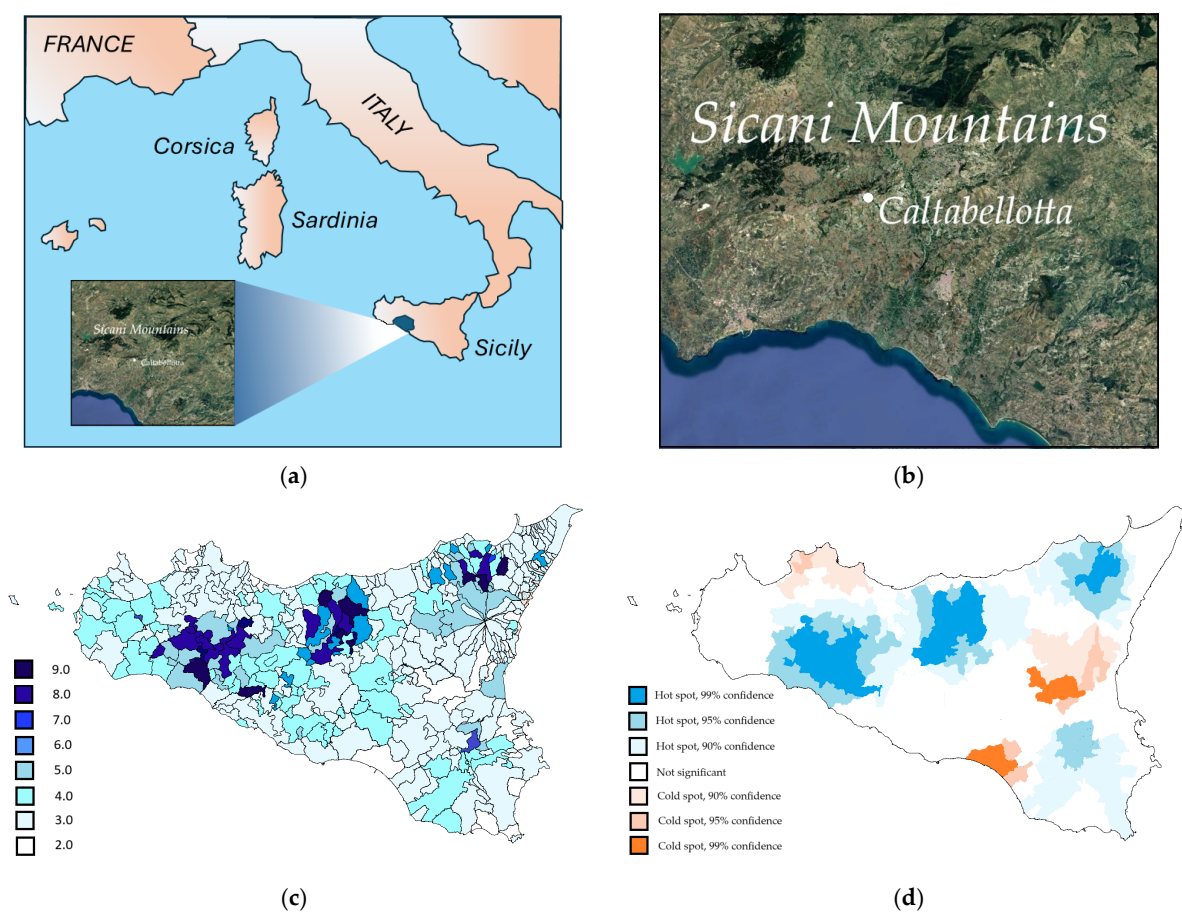
As of 2025, Sicily comprised 391 municipalities, divided between metropolitan cities and free municipal consortia, within nine provinces [26]. The percentages of residents who are 90+ years old, 60+ years old, and their ratio in the nine provinces of the island are shown in Table 1.

Figure 1a illustrates the geographical location of the study region in Sicily. Figure 1b is a high-resolution satellite image of Caltabellotta and the surrounding Sicani Mountains. Figure 1c depicts the raw distribution of the 90+/60+ ratio in the 391 Sicilian municipalities, and Figure 1d shows the spatial distribution of longevity hot and cold spots according to Getis–Ord  $G_i^*$  statistics for the 90+/60+ ratio in the 391 Sicilian municipalities. The longevity areas are the mountainous region previously identified through the analysis of reduced mortality between the ages of 80 and 100 [22].

**Table 1.** Number of nonagenarians and sexagenarians and 90+/60+ ratio (%) in the nine Sicilian provinces in 2025.

Province	No. of Residents <sup>1</sup>	Number of 90+ (%)	Number of 60+ (%)	90+/60+ Ratio (%)
Agrigento	408,059	5644 (1.383)	129,974 (31.851)	4.342
Caltanissetta	244,913	2987 (1.219)	77,341 (31.579)	3.862
Catania	1,068,563	12,205 (1.142)	317,147 (29.679)	3.848
Enna	152,387	2342 (1.537)	51,059 (33.506)	4.587
Messina	595,948	8623 (1.447)	198,906 (33.376)	4.335
Palermo	1,194,439	14,505 (1.214)	365,727 (30.619)	3.966
Ragusa	320,976	3576 (1.114)	91,993 (28.660)	3.887
Siracusa	382,690	4054 (1.059)	119,177 (31.142)	3.402
Trapani	411,396	5709 (1.388)	133,256 (32.391)	4.284

<sup>1</sup> Source: ISTAT, Italian National Statistics Institute (<https://demo.istat.it/> accessed on 10 April 2025).



**Figure 1.** (a) Overview of the study area. (b) High-resolution satellite image of Caltabellotta and the surrounding Sicani Mountains. (c) Map of Sicily showing the spatial distribution of 90+/60+ ratio. (d) Spatial distribution of longevity hot spots and cold spots according to Getis–Ord  $G_i^*$  statistics for the 90+/60+ ratio in 391 Sicilian municipalities.

Moran’s  $I$  index for the 90+/60+ ratio was 0.45 with a Z-score  $> 1.96$  ( $p < 0.05$ ), and cluster analysis revealed that the significance level exceeded 0.05, allowing the identification of three main positive longevity hot spots: in the *Sicani Mountains* (west), in the *Madonie* area (north-central), and in north-eastern Messina province (*Nebrodi*). These areas share characteristics such as remoteness, low urbanization, and traditional agrarian lifestyles.

The municipalities with the highest value of the 90+/60+ ratio are depicted in descending order in Table 2.

**Table 2.** Sicilian villages with the highest value of the 90+/60+ ratio in descending order.

N.	Municipality	Province	Population *	90+	60+	90+/60+
1	Novara di Sicilia	Messina	1131	40 (3.537)	437	9.153
2	Geraci Siculo	Palermo	1684	55 (3.266)	613	8.972
3	Bompietro	Palermo	1153	45 (3.903)	503	8.946
4	Sant'Angelo Muxaro	Agrigento	1170	44 (3.761)	492	8.943
5	Giuliana	Palermo	1680	61 (3.631)	697	8.752
6	Caltabellotta	Agrigento	3184	103 (3.235)	1194	8.626

\* Source: ISTAT, Italian National Statistics Institute (<https://demo.istat.it/> accessed on 10 April 2025).

Supplementary Table S1 reports the population values, number of 90-year-olds and 60-year-olds, and 90+/60+ ratios only for the municipalities within the *Sicani Mountains* area. It can be noted that the two municipalities of Caltabellotta and Giuliana stand out, with values of 90+/60+ ratios significantly higher than the regional average.

### 3.2. Focus on the Town of Caltabellotta

Among the top longest-lived Sicilian municipalities, we selected Caltabellotta as the target municipality due to its highest 90+/60+ ratio and a population size exceeding 3000 inhabitants. This approach minimized the risk of including municipalities with a spuriously high number of nonagenarians due to random variation resulting from a small population size. The municipality with these characteristics was Caltabellotta in the province of Agrigento, part of the westernmost longevity cluster on the island.

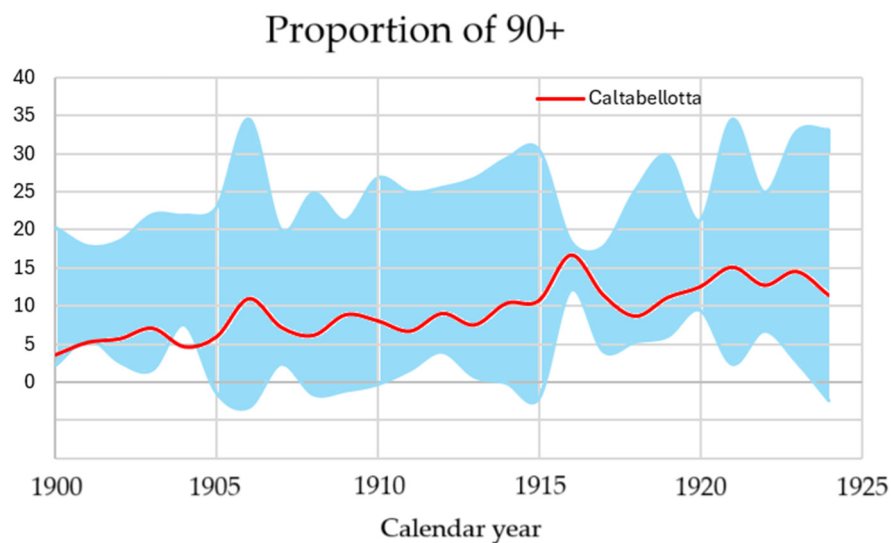
The municipality of Caltabellotta is located atop the *Sicani Mountains* in southwestern Sicily at coordinates 37°34'32" N, 13°13'06" E, and sits at an altitude of 949 m above sea level. As of 1 January 2025, it had 3184 inhabitants with a density of nearly 24 inhabitants per square kilometer. The town is one of the island's oldest continuously inhabited settlements, with roots tracing back to the ancient Sicanian civilization, predating Greek colonization [31]. Throughout history, it has absorbed layers of Greek, Roman, Arab, Norman, and Spanish influences. The town's isolation and rugged terrain historically limited outside contact, fostering a stable population with deep intergenerational ties. Its agrarian lifestyle, based on olive oil, legumes, vegetables, and goat products, reflects the traditional Mediterranean diet long linked to longevity [32]. Traditional practices, manual labor, seasonal rhythms, and social rituals persisted well into the 20th century, contributing to low stress levels and low active aging.

The municipality administration provided access to the civil status registers from 1900 to 1924. For each calendar year, the number of newborns who attained age 90 and over was divided by the total number of newborns. By considering an interval of 25 years, we minimized the instability of the rate of long-livers, as was done in the case of Sardinia [3]. The proportion of 90+ and 100+ individuals in the aforementioned period was compared with that of the Sardinian long-lived area already verified. To do this, we used the data of the seven Sardinian municipalities with the highest longevity, of which the distribution of nonagenarians and centenarians in the time interval 1900–1924 was known. Caltabellotta showed a 90+/60+ ratio of 8.626% in 2025, which is double the regional (4.017%) and provincial (4.342%) average. Supplementary Figure S1 depicts the age pyramids for the 60+ populations of Caltabellotta and Sicily as a whole.

By consulting the Caltabellotta civil status registers between 1900 and 1924, we identified a total of 472 persons of both sexes aged  $\geq 90$  years out of a total of 5319 born in the municipality, while in the seven municipalities of the Sardinia longevity area, the figures were 1163/9233 (Supplementary Table S2). From the comparison between the two locations, it emerges that the share of 90-year-olds in Caltabellotta during the specified interval is

equal to 8.9%, while in the Sardinia BZ area, it is equal to 12.6%. Therefore, the percentage of 90+ individuals in Caltabellotta is approximately 30% lower than in a municipality of the Sardinia BZ. However, despite the lower overall proportion, the rate falls within Sardinia BZ 95% confidence interval.

Figure 2 illustrates the variation in the proportion of newborns who attained age 90 from 1900 to 1924 in Caltabellotta compared with the corresponding variation in the Sardinian long-lived area. The entire curve for Caltabellotta can be noted in the lower part, yet within the confidence interval. The blue curves indicate the  $\pm 2SD$  confidence interval around the mean of the proportion of individuals who reached the age of 90 years in the Sardinia BZ.



**Figure 2.** Proportion of newborns who attained age 90 in Caltabellotta in the period 1900–1924 (red line) compared with the 95% confidence intervals for the Sardinian BZ during the same period (blue lines).

To further evaluate the proportion of the oldest-old in Caltabellotta, we counted the number of individuals born between 1900 and 1924 who became centenarians. The Caltabellotta Civil Registry Office provided a preliminary list of 37 centenarians born during this period. The age validation process excluded five of them for the following reasons: (i) based on their birth and death dates, two alleged centenarians, a male and a female, had died one month and six months before reaching their 100th birthday; (ii) two other centenarians were born in the municipality of Cattolica Eraclea and in Sciacca, a few dozen kilometers from Caltabellotta; and finally, (iii) one centenarian was not found in the civil registry records.

A total of 32 individuals who reached age 100 were identified, corresponding to a birth rate of one future centenarian approximately every 166 births. As the definition of the Sardinian BZ in 2004 referred to 90 centenarians out of 17,865 births (equal to 1:198 births) [3], the probability of becoming centenarians in Caltabellotta is fully compatible with that of a validated BZ. The comparison between the proportion of centenarians born in Caltabellotta and in the Sardinian BZ was carried out for each single calendar year, and the difference was tested by  $\chi^2$ . The difference was not significant except for those born in 1907, among whom the proportion of centenarians in Caltabellotta was significantly lower than in the Sardinian BZ ( $p = 0.034$ ).

## 4. Discussion

Based on official statistics, the findings of this study indicate that the population of Caltabellotta, located near the *Sicani Mountains* area of Sicily, exhibits the characteristics of an emerging BZ area. Therefore, we can confidently reject the null hypothesis that no areas of exceptional longevity exist in Sicily. Compared to the Sardinia BZ, individuals born in Caltabellotta have a probability of reaching 90 years of age that not only exceeds national and regional averages but also falls within the confidence interval observed in the Sardinian BZ municipalities.

The probability of reaching age 90 has progressively increased across the birth cohorts from 1900 to 1924. In this context, it is justifiable to describe the Caltabellotta population as an “emerging Blue Zone,” as its demographic trajectory increasingly aligns with regions of recognized longevity status.

Currently, there is considerable scholarly debate regarding the appropriate criteria for defining a BZ. A defensible assumption is that a region’s longevity can be considered “exceptional” when any operationally defined longevity index exceeds the confidence interval of the distribution observed in less long-lived surrounding areas. In our analysis, the 90+/60+ ratio in Caltabellotta exceeded the 99th percentile of the distribution across all 391 municipalities in Sicily. Statistically, this suggests that Caltabellotta’s longevity profile should be considered exceptional. Nonetheless, we adopted an even more rigorous benchmark by comparing Caltabellotta to a recognized BZ in Sardinia. Yet, we acknowledge that a BZ designation remains partly heuristic and should be applied with appropriate caution. Our aim is not to assert definitive BZ status for Caltabellotta, but rather to argue that its demographic characteristics merit further investigation as a potentially emerging BZ.

Although criticisms have been raised about the reliability of demographic registers in BZs, which calls into question the existence of BZs themselves, especially in poorer areas with high illiteracy rates [33,34], in the case of Caltabellotta, our survey of existing registers confirmed the reliability of the information contained therein, which is comparable to that of the Sardinian records. However, when interpreting these data, certain limitations must be considered. First, the number of individuals aged 90 and above recorded in the civil status registers may be underestimated. The dataset includes several incomplete records—specifically, individuals whose birth in the municipality is documented, but whose death is unregistered. These may include residents who passed away in the town without a formal registration of death, or more likely, those who died elsewhere and whose death was not reported back to the municipality of birth. Hence, the true level of longevity in Caltabellotta may be higher than currently reported. However, in line with the idea that the longevity of this population is likely experiencing an ascending phase, it can be hypothesized that in the near future, the community could fully assume the characteristics of an established BZ. More comprehensive research that systematically addresses these data gaps would be needed for a more accurate estimation.

Regarding centenarians (100+ years), this is a stricter metric of longevity previously used to characterize Sardinian longevity. Between 1900 and 1924, at least 32 individuals born in Caltabellotta achieved centenarian status, as validated through civil registry data. Among them, Mr. Antonino Turturici (18 January 1912–23 September 2021), a semi-supercentenarian, was notably the oldest living Italian male at the time of his death [35]. His family also included several other long-lived individuals, with at least three siblings surpassing the age of 90. In the town of Chiusa Sclafani, located only 25 km from Caltabellotta, Mrs. M.S.V.B. (2 December 1904–14 January 2016) lived 111 years and 43 days and was reported in the official list of Italian supercentenarians. Moreover, Ms. F.F., was born in Sciacca, just 20 km from Caltabellotta, and died in Agrigento on 16 July 2025 at

the age of 113. Such “sentinel” longevity cases are often considered marks of exceptional longevity clusters and strong indicators of a broader community trend [16]. Similarly, the presence of two supercentenarians whose ages had been validated has been reported in the village of Isnello, located in the second longevity cluster identified in Sicily (Caruso, *manuscript submitted*). Apart from the exceptional case of Mr. Turturici in Caltabellotta, the presence of 32 centenarians out of 5319 births indicates a frequency of just over 1 centenarian every 166 births, which is not far from the value of 1:198 recorded in the Sardinian BZ [3]. Furthermore, some of Caltabellotta centenarians were family-related: two were sisters, and another pair was a married couple. Although this represents a small sample, such kinship patterns suggest shared environmental or lifestyle factors that may promote longevity within the broader community.

In most BZs, except Okinawa, the longevity of men is comparable to that of women [3]. However, this trend was not observed in Caltabellotta, where 23 of the 31 centenarians were women, a finding aligned with the well-known gender gap in survival observed in most aged populations [36].

The identification of a possible BZ in western Sicily, confirming previous research [25], naturally raises questions regarding the underlying determinants of this phenomenon. Longevity is commonly viewed as a proxy for healthy aging, and areas with high concentrations of long-lived individuals are often considered to possess unique combinations of protective factors that slow the aging process across large segments of the population. These factors, broadly categorized into genetic, environmental, and cultural domains, are generally thought to apply at both the individual and population levels [37].

#### 4.1. Genetic Factors

Longevity is not determined solely by genetics. This message made headlines worldwide a few years ago following a collaborative study between statisticians from Ancestry and Calico Life Sciences. By analyzing family trees encompassing 400 million individuals, with detailed records on birth and death dates, locations, and family ties, the study concluded that genetic factors account for less than 10% of lifespan variability [38]. However, this large-scale study examined the genetic influence on lifespan broadly and did not specifically focus on exceptional longevity, as very few families with centenarians were included in the analysis. On the other hand, evidence is compelling that adopting a healthy lifestyle can significantly increase life expectancy in the general population [39]. A study published last year, which evaluated the habits of more than 276,000 U.S. veterans, revealed that adopting eight healthy behaviors could extend lifespan by up to 24 years. These behaviors included maintaining a balanced diet, engaging in regular physical activity, getting adequate sleep, managing stress effectively, cultivating strong social relationships, and avoiding smoking, opioid abuse, and excessive alcohol consumption [40]. According to the researchers, veterans who adhered to all eight behaviors could expect to live up to approximately 87 years, nearly a decade longer than the current average life expectancy in the United States. As age advances, particularly beyond 80 years, genetics appears to play an increasingly significant role in maintaining health and longevity. Among centenarians, genetic influence is estimated to account for up to 33% of longevity in women and 48% in men [41].

In the case of Sicily, genetic studies have shown a relatively homogeneous population structure. No significant differences have been found between the western and eastern parts of the island, and overall gene frequency variations suggest that Sicily acts as a single genetic unit, unlike Sardinia, which is considered a genetic isolate [42]. Studies on uniparental markers, such as mitochondrial DNA and the Y chromosome, further confirm a high degree of intrapopulation variability, which, however, does not cluster

into genetically distinct subgroups [42]. These findings suggest that the longevity in Caltabellotta is unlikely to be driven by genetic uniqueness, reinforcing the relevance of environmental and lifestyle influences.

#### 4.2. Environmental Factors

Environmental factors may offer a particularly compelling explanation. Several studies have provided evidence that altitude, soil type, and vegetation biodiversity are major environmental factors influencing the longevity of nearby populations. Most globally recognized longevity hot spots, Okinawa being a notable exception, are located at moderate altitudes. For instance, the seven Sardinian municipalities with the highest longevity indices are situated between 480 and 1000 m above sea level [3]. Living at such elevations may promote higher daily energy expenditure, more robust metabolism, and lower accumulation of body fat, all of which contribute to healthier aging profiles [43]. The *Sicani Mountains* are a vast area straddling the provinces of Agrigento and Palermo, largely composed of a hilly strip interspersed with vast plains occupied by arable and uncultivated land and pastures, while the mountainous area (over 800 m a.s.l.) is characterized by sheer cliffs, mostly made up of carbonates. This hilly area, typically with low population density and slight economic delay, offers a unique case for examining how environmental and lifestyle variables may interact to promote long-term health. Additionally, the natural environment, marked by clean air, limited industrial activity, and biodiversity-rich landscapes, may contribute to a reduced allostatic load, i.e., the cumulative physiological wear and tear on the body due to chronic exposure to stressors [44], thereby supporting both physiological and psychological resilience over time. The mountainous nature of all four *Sicani* municipalities with the highest 90+/60+ ratio is worth noting (altitude Caltabellotta 949, Giuliana 710, Chiusa Sclafani 658, and Bisacquino 744 mt. a.s.l.) and is comparable to that of similar long-lived municipalities in the Sardinia region and elsewhere. Caltabellotta, located 949 m above sea level, falls within this beneficial altitude range. While cardiovascular benefits from high altitude are generally associated with elevations above 1500 m [45], even moderate elevations such as those found in the *Sicani* region may promote active lifestyles and reduce environmental stressors [2]. Notably, longevity clusters in Sicily are typically found far from major industrial areas and highly polluted zones—such as Palermo, Catania, and the towns of Gela and Augusta, which are both associated with large petrochemical complexes [22,46]. Also, the Mediterranean temperate climate of Caltabellotta and the *Sicani Mountains*, with temperatures around 20 °C year-round, may also be an important longevity-promoting factor, as reported by other studies [11,47].

The influence of green spaces on aging and longevity is also well-documented [48]. Access to natural environments has been associated with slower epigenetic aging [49] as well as an association between forest cover and mental health [50]. The *Sicani Mountains*, with their rich biodiversity and low urban density, offer a livable setting for reduced allostatic load and increased psychosocial resilience [10].

Another factor that may contribute to longevity in this region is the quality of drinking water [51]. The geology of the *Sicani Mountains*, dominated by Mesozoic limestone formations, results in mineral-rich groundwater containing high levels of calcium ( $\text{Ca}^{2+}$ ) and magnesium ( $\text{Mg}^{2+}$ ) [52]. These minerals contribute to water hardness, which has been inversely associated with cardiovascular disease risk [53]. For instance, in the Sardinia limestone BZ area, water hardness correlates with reduced standardized mortality ratios for coronary artery disease, particularly among men [54]. This protective effect of drinking waters rich in calcium and magnesium against cardiovascular mortality is seen not only in Sardinia but also in other BZs with similar hydrogeological features; for instance, in the Nicoya Peninsula, Costa Rica [55].

In the town of Caltabellotta, water hardness has been measured at 35 °F (French degrees), with calcium levels of 79 mg/L and magnesium levels of 38 mg/L [56]. Additionally, the water contains appreciable amounts of bicarbonate, an anion linked to increased lifespan in animal models [57]. While the precise mechanisms remain speculative, it is plausible that the hydrogeological features of the *Sicani Mountains* may play a role in promoting cardiovascular and overall health and longevity [10].

#### 4.3. Lifestyle Factors

Initial observations suggest that the Sicani region shares many prominent characteristics with globally recognized longevity zones: strong social bonds, traditional agrarian lifestyles, and diets based on local, minimally processed foods. Its mountainous landscape, small and cohesive communities, and low exposure to industrial pollutants provide an ideal environment conducive to healthy aging. Residents traditionally follow routines involving locally grown produce, regular physical activity through farming and walking, and supportive family networks that extend across generations [10,58].

##### 4.3.1. Diet

The Mediterranean diet, which has long been linked to a reduced risk of chronic disease and improved longevity, is not simply a health recommendation in the Sicani region but a cultural cornerstone [10,59]. This dietary pattern, characterized by a high intake of monounsaturated fats, legumes, vegetables, and whole grains, has been preserved due to longstanding agricultural traditions and socioeconomic conditions that favor simplicity and self-sufficiency.

Some studies have focused on the quality of local olive oil derived from the “*Biancolilla*” cultivar. One study assessed the chemical composition, stability, and sensory attributes of this olive oil over 16 months, indicating that the cultivar and harvest timing significantly influenced the polyphenol content and sensory qualities, such as fruitiness, bitterness, and spiciness [60]. Another investigation focused on the content of bioactive secoiridoids, compounds linked to health benefits [61].

##### 4.3.2. Physical Activity

Moderate physical activity is also recognized as a key factor in preventing early aging and promoting longevity [62,63]. Older people in Caltabellotta remain active, gardening, walking through hilly terrain, and doing chores, naturally incorporating movement into daily routines without formal exercise [10].

##### 4.3.3. Social Factors

A final aspect of interest is the role of psychological and cultural identity. The concept of “place attachment” [64], emphasized in environmental psychology, posits that individuals with a strong emotional connection to their community and surroundings tend to experience better mental health and social cohesion. In towns such as Caltabellotta and Giuliana, residents commonly express a deep-rooted connection to their land, local customs, and religious practices. These psychosocial bonds may serve as buffers against the lifetime stressors that often accompany aging, further supporting the longevity observed in these communities [10]. Eudaimonic well-being, derived from living a life full of meaning and purpose, has been rarely addressed in the BZ literature, with the exception of Sardinia [65]. It seems that some characteristics of the behavior of the Caltabellotta community, particularly high levels of religiousness, which have been found to be associated with longevity and life satisfaction, echo some aspects detected in the BZ of the other Italian island [66], although the unavailability of adequate controls precludes the possibility of effectively

testing this hypothesis. Higher levels of religiousness were also reported in the relative BZ identified in the Netherlands by Deeg et al. [13].

#### 4.4. The Concept of an “Emerging” Blue Zone

Traditionally, BZs have been identified retrospectively as places where a unique convergence of historical, cultural, and environmental factors led to exceptional aging outcomes. However, this concept need not be limited to static or fading enclaves of the past. Instead, BZs may arise from a dynamic interplay between tradition and modernity. Increasing evidence suggests that long-lived communities can emerge, evolve, and eventually decline over time [2]. This temporal dimension is essential: BZs are not fixed points on a map, but living ecosystems shaped by the shifting balance between longstanding practices and contemporary influences.

In this view, an “emerging” BZ represents a community entering an ascending phase, in which both longevity and health span markedly improve. This pattern typically emerges when traditional health-promoting practices, such as close-knit social networks, diets rich in local and minimally processed foods, routine physical activity, and a culturally ingrained sense of purpose, persist alongside the gradual integration of beneficial modern factors. These may include access to basic healthcare, improved sanitation, higher education, and moderate technological adoption. Together, these elements foster an optimal health environment where the old and the new coexist harmoniously. A plateau phase follows when this balance stabilizes, allowing the community to maintain high life expectancy and reduced incidence of chronic, age-related diseases. This balance, as suggested in the case of the Sardinian BZ [67], may be sustained through supportive social norms, local policies, and education systems that preserve both traditional and adaptive modern elements. Yet, this state is delicate, and BZs do not necessarily last forever. The onset of sedentary lifestyles, dietary westernization, increasing psychosocial stress, and other adverse influences can disrupt the equilibrium, leading to a declining phase. This trajectory has been observed in Okinawa and may threaten other known BZs as well [8].

Understanding BZs as dynamic rather than static phenomena provides a more accurate lens through which to interpret longevity in places such as Caltabellotta and, more broadly, the *Sicani Mountains* region. It allows us to study a community in the early stages of emergence, potentially capturing the moment when a population transitions from ordinary health patterns to a period in which a significant portion of its members experience unprecedented longevity. This perspective shifts the focus from mere preservation to active cultivation, suggesting that BZs, once discovered, must also be actively cultivated.

Blue Zones can be understood as emergent, ecologically embedded systems where biological, behavioral, and sociocultural factors interact synergistically to promote healthy aging [2,68]. These regions offer natural experiments in longevity, aligning with ecological models of health that emphasize multilevel determinants, from individual behaviors to environmental and community contexts [69]. The cultivation of BZs is critical not only for preserving these unique demographic phenomena in the face of globalization and modernization [70], but also for extracting transferable lessons for broader population health strategies. For example, the study of geophysical and environmental factors is often overlooked in longevity research [71], yet it has a significant impact on numerous physiological processes in humans and has shown replicable health benefits in diverse settings [72]. Thus, BZs serve both as theoretical models of healthy longevity and as empirical sources for shaping health-promoting policies that respect cultural and environmental contexts, such as reducing pollution and expanding green spaces, and fostering socialization and community bonds.

#### 4.5. Strengths and Limitations

A strength of the present study in identifying a potential BZ in Sicily is the use of reliable Italian official population data, as well as the comparison with demographic data from an already certified long-lived area. Moreover, the study minimized migration bias by measuring longevity using birth cohorts, specifically the proportion of people born in the area who reached age 90 or 100. Both the numerator and denominator were based on place of birth, avoiding distortions from population movement. Since births in a geographic area are fixed, this method offers a conservative and reliable estimate. Any migration would likely lead to underestimation, not overestimation, of longevity, reinforcing the credibility of the results observed in the target area. Finally, the factors put in relation to longevity in the study area are only correlational. Only future studies comparing behaviors and exposure to environmental factors between individuals aged 90+ and those who have left the region might provide better insight into the longevity of this community. In particular, no interviews were conducted or direct observational data collected, and as such, more research will be necessary to gain a deeper understanding of the hypothesized links between environmental, lifestyle, and social factors and the exceptional longevity observed in the *Sicani Mountains*.

## 5. Conclusions

In summary, our demographic analysis indicates that the Caltabellotta community within the *Sicani Mountains* shows a striking longevity, with a markedly higher prevalence of nonagenarians and centenarians than regional and national averages. Notably, the proportion of inhabitants aged  $\geq 90$  rose from 3.6% to 14% in the early 20th century, and 1 in 166 individuals born in Caltabellotta during that period reached age 100. Drawing on a combination of demographic data and extant literature, we explored how local conditions, ranging from diet and daily routines to geography, environment, and social support, contribute to the prevalence of long-lived individuals.

Tentatively, superior longevity was found to be associated with living in a small town embedded in a socially agreeable environment, with adherence to an active lifestyle and a traditional Mediterranean diet rich in plant foods, constant low-intensity physical activity through farming, tight-knit social networks, and a clean, low-pollution environment. Where only the advantageous aspects of modernity, such as access to education, improved hygiene, and public healthcare systems, have reached. In doing so, we seek not only to contribute to the scientific exploration of human longevity but also to highlight the value of rural, ecologically integrated lifestyles that may offer insights into sustainable and healthy aging in an increasingly urbanized and globalized world.

Caltabellotta and the nearby *Sicani Mountains* area exhibit the key traits of an emerging BZ. While not officially recognized, their alignment with established longevity-promoting factors warrants further interdisciplinary research. These findings underscore the importance of the environment and lifestyle in promoting healthy aging and may inform public health strategies beyond the Mediterranean context. Together, these findings synthesize our key results and suggest meaningful directions for research and policy. For researchers, the results motivate deeper, multidisciplinary studies—for example, longitudinal and molecular work—to disentangle the roles of diet, activity, community, and possibly genetics in driving the observed healthy aging. For public health planners, they imply that fostering BZ-like environments (through community design, nutritional guidance, and social support) could extend healthy lifespan at the population level. Indeed, recent BZ initiatives—which translate these lifestyle principles into community policies—have demonstrably increased life expectancy and reduced chronic diseases in trial cities. Finally, our work highlights the dynamic nature of longevity clusters; as lifestyle and demography

change, new BZs may emerge. Early identification of such zones is therefore valuable, since it allows public health systems to learn from and perhaps encourage the beneficial practices that underlie exceptional longevity. Further research will be necessary to gain a deeper understanding of the hypothesized links between environmental, lifestyle, and social factors and the exceptional longevity observed in the Sicani Mountains.

**Supplementary Materials:** The following supporting information can be downloaded at <https://www.mdpi.com/article/10.3390/jal5030026/s1>: Table S1: Sicani Mountains villages with the highest 90+/60+ ratio in descending order; Table S2: Comparison of the proportion of 90-year-olds between Caltabellotta and the Sardinia Blue Zone in the years 1900–1924; Figure S1: Age pyramids for the 60+ populations of Caltabellotta and Sicily as a whole.

**Author Contributions:** Conceptualization, G.M.P., A.E. and C.C.; methodology, G.M.P.; software, G.M.P.; validation, S.V., G.M.P., A.E. and C.C.; formal analysis, G.M.P.; investigation, G.M.P., G.A., A.A. and G.C.; resources, C.C.; data curation, C.C.; writing—original draft preparation, G.M.P.; writing—review and editing, A.E., G.A., A.A., G.C., S.V., G.M.P. and C.C.; visualization, G.M.P.; supervision, C.C.; project administration, C.C.; funding acquisition, C.C. All authors have read and agreed to the published version of the manuscript.

**Funding:** This research received no external funding.

**Institutional Review Board Statement:** Not applicable.

**Informed Consent Statement:** Not applicable.

**Data Availability Statement:** The data presented in this study are available on reasonable request from the corresponding author.

**Acknowledgments:** This work is dedicated to the memory of Dr. Antonio Marchese, who introduced us to the study of longevity in the Sicani Mountains. The authors gratefully acknowledge the assistance from Isabella Giglia, from Rocco Forte Hotels, Sicily, and Pierfilippo Spoto from Caltabellotta, Sicily. Their support in facilitating contact with the municipal administration of Caltabellotta was instrumental in granting access to the civil status registers.

**Conflicts of Interest:** The authors declare no conflicts of interest.

## Abbreviations

The following abbreviations are used in this manuscript:

BZ	Blue Zone
CI	Confidence interval
ISTAT	Italian National Institute of Statistics
KDE	Kernel density estimation
SD	Standard deviation

## References

- Riley, J.C. Estimates of Regional and Global Life Expectancy, 1800–2001. *Popul. Dev. Rev.* **2005**, *31*, 537–543. [[CrossRef](#)]
- Pes, G.M.; Poulain, M. Human Populations with Extreme Longevities. In *The Biodemography of Ageing and Longevity*; Lemaître, J.-F., Pavard, S., Eds.; Cambridge University Press: Cambridge, UK, 2024; pp. 331–352.
- Poulain, M.; Pes, G.M.; Grasland, C.; Carru, C.; Ferrucci, L.; Baggio, G.; Franceschi, C.; Deiana, L. Identification of a geographic area characterized by extreme longevity in the Sardinia island: The AKEA study. *Exp. Gerontol.* **2004**, *39*, 1423–1429. [[CrossRef](#)] [[PubMed](#)]
- Kreouzi, M.; Theodorakis, N.; Constantinou, C. Lessons Learned from Blue Zones, Lifestyle Medicine Pillars and Beyond: An Update on the Contributions of Behavior and Genetics to Wellbeing and Longevity. *Am. J. Lifestyle Med.* **2022**, *18*, 750–765. [[CrossRef](#)] [[PubMed](#)]
- Willcox, B.J.; Willcox, D.C.; Suzuki, M. Demographic, phenotypic, and genetic characteristics of centenarians in Okinawa and Japan: Part 1—centenarians in Okinawa. *Mech. Ageing Dev.* **2017**, *165*, 75–79. [[CrossRef](#)] [[PubMed](#)]

6. Panagiotakos, D.B.; Chrysohoou, C.; Siasos, G.; Zisimos, K.; Skoumas, J.; Pitsavos, C.; Stefanadis, C. Sociodemographic and lifestyle statistics of oldest old people (>80 years) living in ikaria island: The ikaria study. *Cardiol. Res. Pract.* **2011**, *2011*, 679187. [[CrossRef](#)]
7. Rosero-Bixby, L. The exceptionally high life expectancy of Costa Rican nonagenarians. *Demography* **2008**, *45*, 673–691. [[CrossRef](#)]
8. Poulain, M.; Herm, A. Exceptional longevity in Okinawa: Demographic trends since 1975. *J. Intern. Med.* **2024**, *295*, 387–399. [[CrossRef](#)]
9. Poulain, M.; Herm, A.; Errigo, A.; Chrysohoou, C.; Legrand, R.; Passarino, G.; Stazi, M.A.; Voutekatis, K.G.; Gonos, E.S.; Franceschi, C.; et al. Specific features of the oldest old from the Longevity Blue Zones in Ikaria and Sardinia. *Mech. Ageing Dev.* **2021**, *198*, 111543. [[CrossRef](#)]
10. Aliberti, S.M.; Capunzo, M.; Galimberti, D.; Accardi, G.; Aiello, A.; Calabrò, A.; Caruso, C.; Candore, G. Ageing Trajectories: Exposome-Driven Pathobiological Mechanisms and Implications for Prevention from Blue Zones and Italian Longevity Hotspots Such as Cilento and Sicilian Mountain Villages. *Int. J. Mol. Sci.* **2025**, *26*, 4796. [[CrossRef](#)]
11. Aliberti, S.M.; De Caro, F.; Funk, R.H.W.; Schiavo, L.; Gonnella, J.; Boccia, G.; Capunzo, M. Extreme Longevity: Analysis of the Direct or Indirect Influence of Environmental Factors on Old, Nonagenarians, and Centenarians in Cilento, Italy. *Int. J. Environ. Res. Public Health* **2022**, *19*, 1589. [[CrossRef](#)]
12. Aliberti, S.M.; Donato, A.; Funk, R.H.W.; Capunzo, M. A Narrative Review Exploring the Similarities between Cilento and the Already Defined “Blue Zones” in Terms of Environment, Nutrition, and Lifestyle: Can Cilento Be Considered an Undefined “Blue Zone”? *Nutrients* **2024**, *16*, 729. [[CrossRef](#)] [[PubMed](#)]
13. Deeg, D.J.H.; van Tilburg, T.; Visser, M.; Braam, A.; Stringa, N.; Timmermans, E.J. Identification of a “Blue Zone” in the Netherlands: A Genetic, Personal, Sociocultural, and Environmental Profile. *Gerontologist* **2024**, *64*, gnae132. [[CrossRef](#)] [[PubMed](#)]
14. Vallin, J. Why are supercentenarians so frequently found in French Overseas Departments? The cases of Guadeloupe and Martinique. *Genus* **2020**, *76*, 26. [[CrossRef](#)]
15. Huang, Y.; Mark Jacquez, G. Identification of a Blue Zone in a Typical Chinese Longevity Region. *Int. J. Environ. Res. Public Health* **2017**, *14*, 571. [[CrossRef](#)]
16. Soriano, J.B.; Fernandez Vazquez, S.; Carretero, S.; Puga Gonzalez, M.D.; Soriano, C.; Romaguera, D.; Alonso-Fernandez, A.; Busquets, X.; Balcells, S.; Grinberg, D.; et al. Description of extreme longevity in the Balearic Islands: Exploring a potential Blue Zone in Menorca, Spain. *Geriatr. Gerontol. Int.* **2014**, *14*, 620–627. [[CrossRef](#)]
17. Lakshmanan, S.; Kinninger, A.; Golub, I.; Dahal, S.; Birudaraju, D.; Ahmad, K.; Ghanem, A.K.; Rezvanizadeh, V.; Roy, S.K.; Budoff, M.J. 20-Year trend of high prevalence of zero coronary artery calcium in beach cities of Southern California: A blue zone? *Am. J. Prev. Cardiol.* **2020**, *4*, 100098. [[CrossRef](#)]
18. Bardesi, A.; Alabadi-Bierman, A.; Paalani, M.; Beeson, W.L.; Dos Santos, H. The Association Between Healthy Lifestyle Behaviors and Polypharmacy in Older Adults: The Loma Linda Longevity Study. *Am. J. Lifestyle Med.* **2024**, *19*, 372–387. [[CrossRef](#)]
19. Karagoz, C.; Summerfield, G. *Sicily and the Mediterranean: Migration, Exchange, Reinvention*; Palgrave Macmillan: London, UK, 2015.
20. Adler, E.; Bicchi, F.; Crawford, B.; Del Sarto, R.A. *The Convergence of Civilizations: Constructing a Mediterranean Region*; University of Toronto Press: Toronto, ON, Canada, 2006.
21. Vasto, S.; Buscemi, S.; Barera, A.; Di Carlo, M.; Accardi, G.; Caruso, C. Mediterranean diet and healthy ageing: A Sicilian perspective. *Gerontology* **2014**, *60*, 508–518. [[CrossRef](#)]
22. Burkle, A.; Caselli, G.; Franceschi, C.; Mariani, E.; Sansoni, P.; Santoni, A.; Vecchio, G.; Witkowski, J.M.; Caruso, C. Pathophysiology of ageing, longevity and age related diseases. *Immun. Ageing* **2007**, *4*, 4. [[CrossRef](#)]
23. Accardi, G.; Aprile, S.; Candore, G.; Caruso, C.; Cusimano, R.; Cristaldi, L.; Di Bona, D.; Duro, G.; Galimberti, D.; Gambino, C.M.; et al. Genotypic and Phenotypic Aspects of Longevity: Results from a Sicilian Survey and Implication for the Prevention and Treatment of Age-related Diseases. *Curr. Pharm. Des.* **2019**, *25*, 228–235. [[CrossRef](#)]
24. Vasto, S.; Rizzo, C.; Caruso, C. Centenarians and diet: What they eat in the Western part of Sicily. *Immun. Ageing* **2012**, *9*, 10. [[CrossRef](#)] [[PubMed](#)]
25. Vasto, S.; Scapagnini, G.; Rizzo, C.; Monastero, R.; Marchese, A.; Caruso, C. Mediterranean diet and longevity in Sicily: Survey in a Sicani Mountains population. *Rejuvenation Res.* **2012**, *15*, 184–188. [[CrossRef](#)] [[PubMed](#)]
26. Demo—Statistiche Demografiche. Available online: <https://demo.istat.it/> (accessed on 10 April 2025).
27. Brenn, T. Survival to Age 90 in Men: The Tromso Study 1974–2018. *Int. J. Environ. Res. Public Health* **2019**, *16*, 2028. [[CrossRef](#)] [[PubMed](#)]
28. Moran, P.A. Notes on continuous stochastic phenomena. *Biometrika* **1950**, *37*, 17–23. [[CrossRef](#)]
29. Getis, A.; Ord, J.K. The analysis of spatial association by use of distance statistics. *Geogr. Anal.* **1992**, *24*, 189–206. [[CrossRef](#)]
30. Rees, D.G. *Essential Statistics*, 4th ed.; Chapman and Hall/CRC: Boca Raton, FL, USA, 2001.
31. De Angelis, F. *Archaic and Classical Greek Sicily. A Social and Economic History*; Oxford University Press: Oxford, UK, 2016.
32. Hawkes, C.; Ruel, M. The links between agriculture and health: An intersectoral opportunity to improve the health and livelihoods of the poor. *Bull. World Health Organ.* **2006**, *84*, 984–990. [[CrossRef](#)]

33. Gavrilov, L.A.; Gavrilova, N.S. Late-life mortality is underestimated because of data errors. *PLoS Biol.* **2019**, *17*, e3000148. [[CrossRef](#)]
34. Newman, S.J. Supercentenarians and the oldest-old are concentrated into regions with no birth certificates and short lifespans. *bioRxiv* **2019**, 704080. [[CrossRef](#)]
35. Accardi, G.; Aiello, A.; Aprile, S.; Calabro, A.; Caldarella, R.; Caruso, C.; Ciaccio, M.; Dieli, F.; Ligotti, M.E.; Meraviglia, S.; et al. The Phenotypic Characterization of the Oldest Italian Man from December 28, 2020, to September 23, 2021, A.T., Strengthens the Idea That the Immune System can Play a Key Role in the Attainment of Extreme Longevity. *J. Clin. Med.* **2023**, *12*, 7591. [[CrossRef](#)]
36. Christensen, K.; Doblhammer, G.; Rau, R.; Vaupel, J.W. Ageing populations: The challenges ahead. *Lancet* **2009**, *374*, 1196–1208. [[CrossRef](#)]
37. Poulain, M. Individual longevity versus population longevity. In *Centenarians: An Example of Positive Biology*; Caruso, C., Ed.; Springer Nature: Cham, Switzerland, 2019.
38. Ruby, J.G.; Wright, K.M.; Rand, K.A.; Kermay, A.; Noto, K.; Curtis, D.; Varner, N.; Garrigan, D.; Slinkov, D.; Dorfman, I.; et al. Estimates of the Heritability of Human Longevity Are Substantially Inflated due to Assortative Mating. *Genetics* **2018**, *210*, 1109–1124. [[CrossRef](#)]
39. Li, Y.; Pan, A.; Wang, D.D.; Liu, X.; Dhana, K.; Franco, O.H.; Kaptoge, S.; Di Angelantonio, E.; Stampfer, M.; Willett, W.C.; et al. Impact of Healthy Lifestyle Factors on Life Expectancies in the US Population. *Circulation* **2018**, *138*, 345–355. [[CrossRef](#)] [[PubMed](#)]
40. Nguyen, X.T.; Li, Y.; Wang, D.D.; Whitbourne, S.B.; Houghton, S.C.; Hu, F.B.; Willett, W.C.; Sun, Y.V.; Djousse, L.; Gaziano, J.M.; et al. Impact of 8 lifestyle factors on mortality and life expectancy among United States veterans: The Million Veteran Program. *Am. J. Clin. Nutr.* **2024**, *119*, 127–135. [[CrossRef](#)] [[PubMed](#)]
41. Brooks-Wilson, A.R. Genetics of healthy aging and longevity. *Hum. Genet.* **2013**, *132*, 1323–1338. [[CrossRef](#)] [[PubMed](#)]
42. Sarno, S.; Boattini, A.; Carta, M.; Ferri, G.; Alu, M.; Yao, D.Y.; Ciani, G.; Pettener, D.; Luiselli, D. An ancient Mediterranean melting pot: Investigating the uniparental genetic structure and population history of sicily and southern Italy. *PLoS ONE* **2014**, *9*, e96074. [[CrossRef](#)]
43. Fastame, M.C. Well-being, food habits, and lifestyle for longevity. Preliminary evidence from the sardinian centenarians and long-lived people of the Blue Zone. *Psychol. Health Med.* **2022**, *27*, 728–733. [[CrossRef](#)]
44. McEwen, B.S.; Stellar, E. Stress and the individual. Mechanisms leading to disease. *Arch. Intern. Med.* **1993**, *153*, 2093–2101. [[CrossRef](#)]
45. Bärtsch, P.; Gibbs, J.S. Effect of altitude on the heart and the lungs. *Circulation* **2007**, *116*, 2191–2202. [[CrossRef](#)]
46. De Rocchi, D.; Zona, A.; Tumino, R.; Egidi, V.; Pasetto, R. Mortality temporal trends and cancer incidence profiles of residents in the petrochemical industrially contaminated town of Gela (Sicily, Italy). *Ann. Ist. Super. Sanita* **2021**, *57*, 174–182. [[CrossRef](#)]
47. Robine, J.M.; Herrmann, F.R.; Arai, Y.; Willcox, D.C.; Gondo, Y.; Hirose, N.; Suzuki, M.; Saito, Y. Exploring the impact of climate on human longevity. *Exp. Gerontol.* **2012**, *47*, 660–671. [[CrossRef](#)]
48. Nieuwenhuijsen, M.; Khreis, H. Green space is important for health. *Lancet* **2017**, *389*, 700. [[CrossRef](#)]
49. Kim, K.; Joyce, B.T.; Nannini, D.R.; Zheng, Y.; Gordon-Larsen, P.; Shikany, J.M.; Lloyd-Jones, D.M.; Hu, M.; Nieuwenhuijsen, M.J.; Vaughan, D.E.; et al. Inequalities in urban greenness and epigenetic aging: Different associations by race and neighborhood socioeconomic status. *Sci. Adv.* **2023**, *9*, eadf8140. [[CrossRef](#)]
50. Berman, M.G.; Jonides, J.; Kaplan, S. The cognitive benefits of interacting with nature. *Psychol. Sci.* **2008**, *19*, 1207–1212. [[CrossRef](#)]
51. Liu, Y.L.; Luo, K.L.; Lin, X.X.; Gao, X.; Ni, R.X.; Wang, S.B.; Tian, X.L. Regional distribution of longevity population and chemical characteristics of natural water in Xinjiang, China. *Sci. Total Environ.* **2014**, *473–474*, 54–62. [[CrossRef](#)]
52. Bellanca, A.; Di Stefano, P.; Neri, R. Sedimentology and isotope geochemistry of Carnian deep-water marl/limestone deposits from the Sicani Mountains, Sicily: Environmental implications and evidence for a planktonic source of lime mud. *Palaeogeogr. Palaeoclimatol. Palaeoecol.* **1995**, *114*, 111–129. [[CrossRef](#)]
53. Monarca, S.; Kozisek, F.; Craun, G.; Donato, F.; Zerbini, I. Drinking water hardness and cardiovascular disease. *Eur. J. Cardiovasc. Prev. Rehabil.* **2009**, *16*, 735–736. [[CrossRef](#)] [[PubMed](#)]
54. Dore, M.P.; Parodi, G.; Portoghese, M.; Errigo, A.; Pes, G.M. Water Quality and Mortality from Coronary Artery Disease in Sardinia: A Geospatial Analysis. *Nutrients* **2021**, *13*, 2858. [[CrossRef](#)] [[PubMed](#)]
55. Mora-Alvarado, D.M.; Barquero, C.F.P.; Herrera, N.A.; Miralthe, M.H. Diferencias de dureza del agua y las tasas de longevidad en la península de nicoya y los otros distritos de Guanacaste. *Tecnol. Marcha* **2015**, *28*, 3–14. [[CrossRef](#)]
56. Masclé, G. Etude géologique des Monts Sicani. *Riv. It. Paleont. Strat.* **1979**, *16*, 1–431.
57. Leibrock, C.B.; Voelkl, J.; Kohlhofer, U.; Quintanilla-Martinez, L.; Kuro, O.M.; Lang, F. Bicarbonate-sensitive calcification and lifespan of klotho-deficient mice. *Am. J. Physiol. Ren. Physiol.* **2016**, *310*, F102–F108. [[CrossRef](#)]
58. Yang, T.C.; Matthews, S.A. The role of social and built environments in predicting self-rated stress: A multilevel analysis in Philadelphia. *Health Place.* **2010**, *16*, 803–810. [[CrossRef](#)]
59. Trichopoulos, A.; Vasilopoulou, E. Mediterranean diet and longevity. *Br. J. Nutr.* **2000**, *84* (Suppl. S2), S205–S209. [[CrossRef](#)]

60. Lino, C.; Bongiorno, D.; Pitonzo, R.; Indelicato, S.; Barbera, M.; Di Gregorio, G.; Pane, D.; Avellone, G. Chemical Characterization, Stability and Sensory Evaluation of Sicilian Extra Virgin Olive Oils: Healthiness Evidence at Nose Reach. *Foods* **2024**, *13*, 2149. [[CrossRef](#)] [[PubMed](#)]
61. Losito, I.; Abbattista, R.; De Ceglie, C.; Castellana, A.; Calvano, C.D.; Cataldi, T.R.I. Bioactive Secoiridoids in Italian Extra-Virgin Olive Oils: Impact of Olive Plant Cultivars, Cultivation Regions and Processing. *Molecules* **2021**, *26*, 743. [[CrossRef](#)] [[PubMed](#)]
62. Reimers, C.D.; Knapp, G.; Reimers, A.K. Does physical activity increase life expectancy? A review of the literature. *J. Aging Res.* **2012**, *2012*, 243958. [[CrossRef](#)] [[PubMed](#)]
63. Warburton, D.E.; Nicol, C.W.; Bredin, S.S. Health benefits of physical activity: The evidence. *CMAJ* **2006**, *174*, 801–809. [[CrossRef](#)]
64. Inalhan, G.; Yang, E.; Weber, C. *Place Attachment Theory*; Routledge/Taylor & Francis Group: Abingdon, UK, 2021; p. 14.
65. Fastame, M.C.; Ruiu, M.; Mulas, I. Mental Health and Religiosity in the Sardinian Blue Zone: Life Satisfaction and Optimism for Aging Well. *J. Relig. Health* **2021**, *60*, 2450–2462. [[CrossRef](#)]
66. Fastame, M.C.; Ruiu, M.; Mulas, I. Hedonic and Eudaimonic Well-Being in Late Adulthood: Lessons from Sardinia's Blue Zone. *J. Happiness Stud.* **2022**, *23*, 713–726. [[CrossRef](#)]
67. Pes, G.M.; Tolu, F.; Dore, M.P.; Sechi, G.P.; Errigo, A.; Canelada, A.; Poulain, M. Male longevity in Sardinia, a review of historical sources supporting a causal link with dietary factors. *Eur. J. Clin. Nutr.* **2015**, *69*, 411–418. [[CrossRef](#)]
68. Andrews, G.J.; Phillips, D.R. *Ageing and Place: Perspectives, Policy, Practice*; Routledge: London, UK; Taylor and Francis Group: New York, NY, USA, 2004.
69. Glass, T.A.; McAtee, M.J. Behavioral science at the crossroads in public health: Extending horizons, envisioning the future. *Soc. Sci. Med.* **2006**, *62*, 1650–1671. [[CrossRef](#)]
70. Springer, A.E.; Evans, A.E.; Ortuno, J.; Salvo, D.; Varela Arevalo, M.T. Health by Design: Interweaving Health Promotion into Environments and Settings. *Front. Public Health* **2017**, *5*, 268. [[CrossRef](#)]
71. Mesnage, R. Environmental Health Is Overlooked in Longevity Research. *Antioxidants* **2025**, *14*, 421. [[CrossRef](#)]
72. Buettner, D.; Skemp, S. Blue Zones: Lessons from the World's Longest Lived. *Am. J. Lifestyle Med.* **2016**, *10*, 318–321. [[CrossRef](#)]

**Disclaimer/Publisher's Note:** The statements, opinions and data contained in all publications are solely those of the individual author(s) and contributor(s) and not of MDPI and/or the editor(s). MDPI and/or the editor(s) disclaim responsibility for any injury to people or property resulting from any ideas, methods, instructions or products referred to in the content.