

CONSTRUCTION HISTORY

International Journal of the Construction History Society

Vol. 32 No.1 (2017)

CONTENTS

Editorial	i
Christine Wall, Hermann Schlimme and Will McLean	
Building contracts in the Low Countries. Provisions concerning form and quality control in the construction industry (1350-1650)	1
Gabri van Tussenbroek	
Thomas Telford – Engineer of Rochester Bridge 1821-1827	21
Sue Threader	
George Robert Jebb (1838-1927): Railway and Canal Engineer	41
Timothy J Peters and Stephen F Brown	
Earthquake-resistant construction techniques in Italy between 1880 and 1910: alternatives to reinforced concrete	63
Federica Scibilia	
Building organic architecture in Italy: the history of the construction of the Solimene Ceramics Factory by Paolo Soleri in Vietri sul mare (1952-1956)	83
Luciano Cardellicchio	
Book Reviews	105
Errata corrige: <i>Das Grenzlandtheater in Zittau 1934-1936</i> , by Jos Tomlow and Sabine Spitzner-Schmieder	
<i>Les dispositifs du confort dans l'architecture du XXe siècle: connaissance et stratégies de sauvegarde / Building Environment and Interior Comfort in 20th-Century Architecture: Understanding Issues and Developing Conservation Strategies</i> , edited by Franz Graf and Giulia Marino	
<i>Building Churches in Northern China. A 1926 Handbook in Context</i> by Thomas Coomans and Yitao Xu	
<i>Wissensgeschichte der Architektur. 3 volumes</i> edited by Jürgen Renn, Wilhelm Osthues and Hermann Schlimme	

CONSTRUCTION HISTORY Volume 32, No. 1. 2017

CONSTRUCTION —HISTORY—

International Journal of the Construction History Society

Volume 32, No. 1 2017



CONSTRUCTION HISTORY

International Journal of the Construction History Society

EDITORS

Dr Christine Wall	Faculty of Architecture and the Built Environment, University of Westminster
Prof Dr Ing Hermann Schlimme	Department for History of Architecture and Urbanism, Technische Universität Berlin, Germany
Will McLean	Faculty of Architecture and the Built Environment, University of Westminster

EDITORIAL ADVISORY PANEL

Prof. Inge Bertels	Department of Architecture, Vrije Universiteit Brussel, Belgium
Dr. Ing. Dirk Bühler	Deutsches Museum, Munich, Germany
Prof. José Calvo López	Escuela Técnica Superior de Arquitectura y Edificación, Polytechnic, University of Cartagena, Spain
Michael M. Chrimes	Vice Chairman, Panel for Historical Engineering Works, Institution of Civil Engineers, London
Prof. Marina Döring-Williams	Institut für Kunstgeschichte, Bauforschung und Denkmalpflege, University of Technology, Vienna
Prof. Lauren Etxepare	Department of Architecture, University of the Basque Country, San Sebastian
Prof. Roberto Gargiani	École Polytechnique Fédérale de Lausanne, Switzerland
Prof. Dr. Ing. Stefan M. Holzer	Institute of Historic Building Research and Conservation (IDB), Swiss Federal Institute of Technology, Zurich
Benjamin Ibarra Sevilla	Assistant Professor of Architecture, University of Texas at Austin, USA
Dr Nigel Isaacs	School of Architecture, Victoria University of Wellington, New Zealand
Prof. Santiago Huerta	School of Architecture, Polytechnic University of Madrid
Prof. Tom Leslie	Department of Architecture, Iowa State University, USA
Prof. João Mascarenhas Mateus	Faculty of Architecture, University of Lisbon, Portugal
Dr Valérie Nègre	Ecole nationale supérieure d'architecture, Paris La Villette
Dr Mario Rinke	Department of Architecture, Eidgenössische Technische Hochschule, Zurich
Prof. Klaus Tragbar	Institute for Architectural Theory and Building History, Leopold Franzens-Universität, Innsbruck
Dr. Ing. David Wendland	Faculty of Art History, Technical University, Dresden, Germany

Construction History is an international journal devoted to the study of all aspects of the history of buildings and construction, and to the development of construction history as a scholarly discipline. Founded in 1985, *Construction History* is the only English-language periodical in the subject. The journal is published twice a year by the *Construction History Society*, in association with the Chartered Institute of Building. The CHS website www.constructionhistory.co.uk

Construction History is abstracted and indexed in the **Arts & Humanities Citation Index (A&HCI)** and **Current Contents/Arts & Humanities**, and is fully searchable on the **WEB OF SCIENCE** (all Thomson Reuters). It is abstracted and indexed in **SCIMAGO** and **SCOPUS** (Elsevier).

Papers from past volumes of Construction History are available on **JSTOR** and **ProQuest**.

Editorial correspondence, including abstracts and manuscripts submitted for possible publication should be sent to editor@constructionhistory.co.uk

Books for review and notification of new and forthcoming publications should be sent to The Editor, Construction History, c/o Department of Architecture, University of Cambridge, 1-5 Scroope Terrace, Cambridge CB2 1PX.

Business correspondence, including orders and remittances for subscriptions, back numbers, and off Prints should be addressed to The Secretary, Construction History Society, c/o Department of Architecture, University of Cambridge, 1-5 Scroope Terrace, Cambridge CB2 1PX.

ISSN 0267-7768 © The Construction History Society.

CONSTRUCTION HISTORY

International Journal of the Construction History Society

GUIDANCE FOR PROSPECTIVE AUTHORS

Construction History covers all aspects of the history of building and civil engineering history embracing both technical and socio-economic aspects of subject. Among technical aspects covered are:

- construction materials and components, urban infrastructure, bridges
- building systems including structure, heating ventilation, air-conditioning, the building envelope
- design methods, tools, techniques and codes, analytical techniques and tools
- prefabrication, construction processes and plant, temporary works.

Socio-economic subjects that may be covered include:

- economics, funding and management of construction projects, quantity surveying, costs and wages
- biographies, construction organisations and firms, the construction professions, education and training
- skills, trades and labour in construction, labour relations, organisation of work and labour
- historiography, historical sources, archives, museums of construction.

Titles of papers previously published in *Construction History* can be found on the CHS website. The journal does not include papers about the conservation or refurbishment of existing buildings or engineering structures.

Prospective authors should, in the first instance, submit by email an outline proposal in English to the Editors at editor@constructionhistory.co.uk

This outline should be 5-600 words and include the following:

- Provisional title
- Name of the author
- Status (independent scholar or University or research institute to which the author is affiliated)
- Theme of the paper and the main issue being addressed
- Sources of information and data that would be used
- Nature of the author's original input
- Illustrations that would be included
- References to related academic work published by the author.

Authors will be informed immediately if the proposal is considered suitable for proceeding to the next stage of submitting the full paper.

Papers should be in English and up to around 8000 words in length, and may include up to around twelve images that will be printed in black/white at approximately A5 size. In the first instance, the paper should be submitted as a pdf file containing the full text and images (in place or following the text). The file size should be less than 6MB.

The submitted paper will be sent to two independent reviewers who will advise the Editorial Panel as to its suitability and standard. Authors will be informed of the Panel's decision and, if considered suitable, how the paper may need to be revised or improved to a standard suitable for publication.

Final versions of papers and images must be submitted in electronic form via a Dropbox site, to which authors will be given temporary access for uploading files. Final papers will not be accepted by email.

Full guidance on preparing and submitting papers can be found in the Notes for Contributors that can be downloaded from the CHS website:

<http://www.constructionhistory.co.uk/publications/construction-history-journal/>

Earthquake-resistant construction techniques in Italy between 1880 and 1910: alternatives to reinforced concrete

Federica Scibilia

University of Palermo

Abstract

The series of earthquakes that struck Italy between the late nineteenth century and the first decade of the twentieth century spurred a lively debate about earthquake-resistant buildings that, through the influence of foreign experience, resulted in specialised literature and competitions that gave rise to a series of interesting patents. Innovative construction solutions for seismic areas were largely developed after the earthquake that struck the cities of Messina and Reggio Calabria in 1908, alongside the parallel advances in reinforced concrete. New earthquake-resistant construction solutions were based on a reassessment of traditional construction methods that used bricks, timber or metal, and in some cases they were combined with recently introduced materials such as expanded metal mesh.

The aim of this paper, which is based on a historical-critical research of specialised literature, design competitions and patents (filed at the State Central Archive headquartered in Rome), is to highlight the advances made in Italy in the field of earthquake-resistant construction systems as alternatives to reinforced concrete technology.

Keywords

Earthquake-resistant construction, patents, Messina and Reggio Calabria earthquake, earthquake-resistant technology, 1908.

Introduction

It is well known that over the centuries Italy has been hit by violent earthquakes causing extensive damage to the architectural heritage of urban centres. The Italian regions of Campania, Sicily and particularly Calabria were struck by a series of high-intensity earthquakes between the last decades of the nineteenth century and the first decade of the twentieth century. This caused an extensive debate among the major building figures of that time, and in turn led to experimentation with different construction solutions aimed at reducing the vulnerability of buildings by increasing their ability to withstand the effects of an earthquake.

Whilst many of the post-earthquake reconstruction works in the second half of the nineteenth century resorted to the *baraccata* system (in some cases imposed by specific building regulations issued after the disasters), the major innovations in the field of earthquake-resistant construction occurred after the violent earthquake that struck the cities of Messina and Reggio Calabria on 28 December 1908. The focus on earthquake-resistant buildings increased significantly in Italy after this event, leading to a widespread use of reinforced concrete in seismically active areas, and also to the publication of the first technical standards on reinforced concrete in 1907.¹ During the years immediately after the 1908 earthquake, and also influenced by foreign experience, specific literature in connection with earthquake-resistant construction was published including booklets, design studies and journals – congresses and

Earthquake-resistant construction techniques in Italy between 1880 and 1910: alternatives to reinforced concrete

competitions were held, and multiple patents were filed. I will attempt to describe how a new branch of research developed simultaneous to the advances of reinforced concrete, which revisited and modernised traditional construction systems of brick, timber or iron structures, with the addition of new industrially produced materials.

This paper focuses on the discussion that developed in Italy as regards alternative technologies to reinforced concrete, by referring to the competitions and congresses that encouraged new solutions as an evolution to traditional construction techniques. The patents filed in those years are also highlighted.

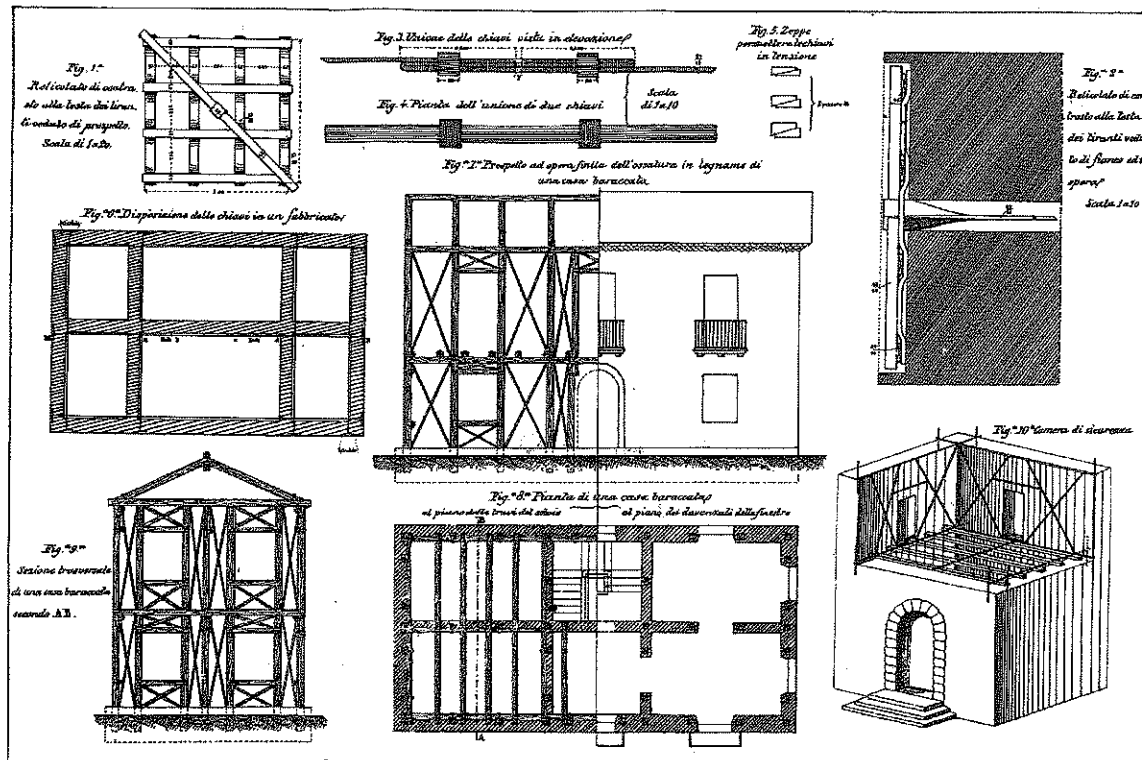
Earthquake-resistant construction systems and standards between the nineteenth and the twentieth centuries

The violent earthquakes that hit Italy in the second half of the nineteenth century spurred multiple reactions in the field of earthquake-resistant construction, and also gave rise to specific regulations aimed at setting technical requirements for post-earthquake reconstruction. In Italy, the first earthquake-resistant standard proper, (i.e. containing technical requirements deliberately conceived to make buildings more resistant to seismic effects), was issued after the catastrophic 1783 earthquake that struck the cities of Messina, Reggio Calabria and other smaller towns. The *Royal Instructions for the Reconstruction of Reggio* issued by the Bourbon government on 20 March 1784 validated the *baraccata* construction system. Such a system had been recorded by Giovanni Vivenzio in his book *Istoria e teoria de' tremuoti*.²

The structure consisted of a timber frame, with uprights, beams and diagonal members acting as bracing, within a masonry structure with box-like behaviour. This construction system was not actually new, given the fact that *baraccata* buildings were apparently already present in Calabria back in the seventeenth century, and had also been erected in L'Aquila after the 1703 earthquake.³ In addition, the system recalled – in spite of some differences – the so-called “*Pombalina gaiola*” or cage system (named after the Portuguese Minister, Marquis of Pombal, who was in charge of the city reconstruction) introduced after the devastating 1755 Lisbon earthquake. The confidence invested in this construction system was confirmed by subsequent studies and by the regulations that came into effect after the violent earthquakes of Messina and Reggio Calabria. Such regulations reintroduced, with some suitable variations, the *baraccata* system.

After the earthquake that affected Umbria in August 1859, the Building Regulations for the city of Norcia were issued.⁴ Among other technical requirements, these regulations recommended the use of the *baraccata* system. The same construction system was suggested by engineer Luigi Peggio, and was thoroughly described in his memoir, *Sul consolidamento delle fabbriche nelle Calabrie contro i danni dei terremoti* (1876).⁵ (Fig. 1).

A few years later, with the *Building Regulations for the towns of the Island of Ischia damaged by the 28 July 1883 earthquake*,⁶ this construction method was officially adopted for the reconstruction of the island buildings (many of which still keep these characteristics).⁷ Such requirements were also adopted in Liguria after the 22 February 1877 earthquake⁸ and, again, in Calabria after the 16 November 1894 earthquake.⁹ The use of earthquake-resistant timber structures similar to those of the *baraccata* system was proposed for other geographic seismic zones during that time. For example, after the 1880 Manila earthquake, engineer Manuel Cortés y Agulló recommended the *baraccata* buildings with wooden or iron skeletons, which, in his opinion, would have guaranteed greater resistance to the seismic effects compared with simple masonry buildings.¹⁰



CONSOLIDAMENTO DEI FABBRICATI IN CALABRIA
contro i danni dei terremoti

Figure 1. Seismic prevention systems: iron chains and baraccata system (L. Pessa, 'Sul consolidamento...', cit.)

The preference given to such construction systems is also confirmed after analysing earthquake-resistant building patents that were filed between the second half of the nineteenth century and the first years of the twentieth century; these patents show that most experiments were variations of the same construction solution.¹¹ Even though after the 1905 earthquake that hit Messina and Calabria, the *baraccata* system (not yet included in the relevant regulations)¹² continued to be used, the first applications of reinforced concrete for structures began in the field of earthquake-resistant construction, not only for the reinforcement of historical buildings, but also for new construction.

The discussion about earthquake-resistant buildings after the 1908 Messina and Reggio Calabria earthquake

The earthquake that struck the Messina Straits in 1908 can be regarded as a watershed, after which the problem of how to develop the most suitable construction system to withstand seismic effects became of utmost importance, and which impelled the entire scientific community to pay closer attention to this field of study.

The technological response crossed local boundaries, spurring proposals and reflections from a large group of scholars and professionals, who, by means of both specialised literature and the professional associations of which they were member, encouraged studies and projects of a different, innovative nature.

Specialised journals highlighted the Italian government's incapacity to manage the emergency, whilst pointing to the need for a national association in order to analyse which construction methods should be

best adopted to reconstruct the destroyed cities so that the buildings were sufficiently resistant to the effects of any future seismic event.¹³ To such end, the Board of Directors of the National Association of Italian Engineers and Architects created a committee to develop the technical standards to be observed when building in seismic zones. The committee, headed by engineer Luigi Luigi, President of the Association, gathered renowned professionals that included engineers Alberto Pacchioni, Eduardo Mariano Cannizzaro, Gustavo Giovannoni and geologist Gioacchino De Angelis d'Ossat.

The result of their studies is documented in the general report containing the *Norme edilizie per i paesi soggetti a terremoti* (Building Standards for the Towns Struck by Earthquakes) published in April 1909 in the *Annali della Società degli Ingegneri e Architetti Italiani*.¹⁴ The document, after briefly stating the main effects of earthquakes on buildings, analysed the different construction systems in use, which were divided according to the materials used. Among the systems analysed, and considered to be suitable for seismic zones (besides reinforced concrete structures) were the buildings made of reinforced masonry, and the wood-and-masonry and iron-and-masonry mixed buildings according to the *baraccata* system. In particular, for reinforced masonry, reference was made to the *Lescasse* method, which was named after the French engineer who published it for the first time in 1876 after he had used this method in Japan.¹⁵ (Fig. 2) His method consisted of strengthening the masonry with a system of horizontal (flat) iron reinforcements and vertical (round) iron reinforcements to create a more structurally monolithic fabric.

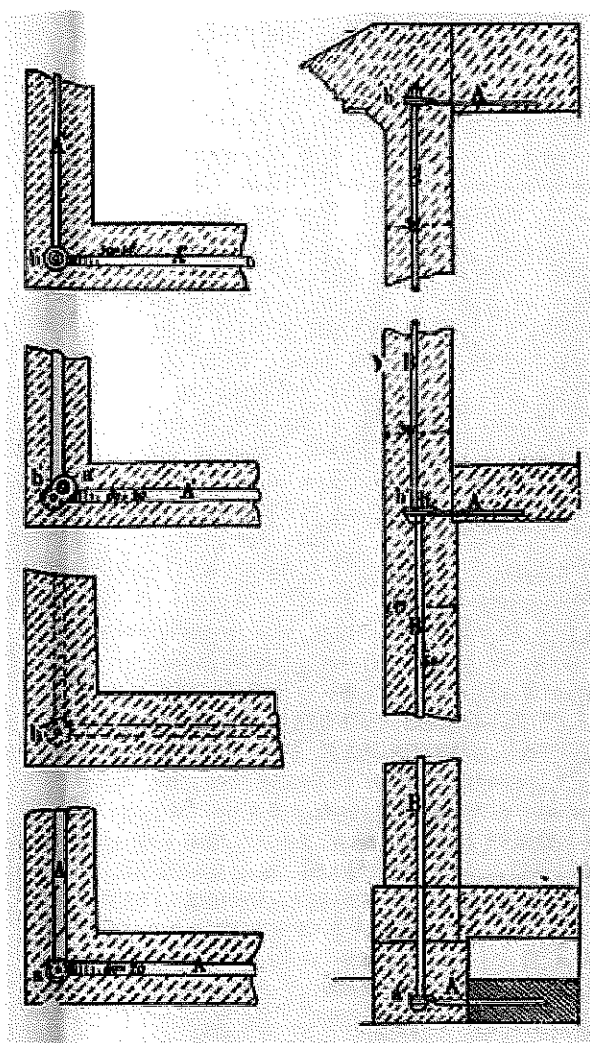


Figure 2. Reinforced masonry according to the Lescasse method (G. De Angelis d'Ossat, A. Pacchioni, 'Norme edilizie per ..., cit.)

For the traditional wood *baraccata* system it was determined that its effectiveness depended on building a well-connected timber skeleton, with light infill materials covered with metal cables or metal mesh to secure the plaster. Such a system was suitable for buildings of no more than two floors high, with a square and compact floor plan.

The report also analysed – taking into account both Italian and international perspectives – the effectiveness of standards and requirements issued after earthquakes, and how these standards informed the criteria to select the site, orientation of buildings, and the design of individual construction components (foundations, masonry at height, arches, vaults, floors, roofing, stairs, balconies, frames, etc.). The report also examined regulations borne out of the recent earthquakes that had affected Italy, particularly Norcia (1859), Ischia (1883) and Liguria (1887). In order to prove the validity of specific construction solutions, the document reported the response adopted in the Philippines after the 1880 earthquake, in San Francisco after the 1906 earthquake and in Japan – one of the most seismically vulnerable areas in the world – and in which earthquake-resistant building experimentation was of particular interest, as demonstrated, by the frequent references made to the systems implemented by John Milne.¹⁶

The report included a series of rules to be observed when building in seismic zones, and ended with a substantial bibliography recommending essential texts to refer to when studying earthquake-resistant construction methods. Such a bibliography was a snapshot of the state of the art at that precise historical moment and it eloquently illustrates the technical knowledge about earthquake-resistant buildings, through the study of similar international experience.

As proof of the renewed interest aroused by earthquake-resistant construction, several competitions and congresses were held, including the *Concorso per costruzioni edilizie nelle regioni italiane soggette a movimenti sismici* (Competition for Building Constructions in seismically threatened zones in Italy), which was announced in 1909 by the Lombardy Cooperative Society of Public Works. The competition programme was prepared by a special Committee appointed by mutual agreement between the Society and the Milan College of Engineers and Architects. Its members included some of the most renowned experts in the field, including seismologist Mario Baratta.

The programme was published by some of the most influential specialist journals of that time,¹⁷ and was expressly intended to attract suitable entries for new types and systems for constructing residential and industrial buildings for future adoption by Italian regions most threatened by earthquakes. Competitors were given great freedom as to how to present their proposals. Designs, drawings, essays, reports, photographs, construction models or construction element models as well as samples of materials, everything would be accepted, all of them accompanied by a thorough technical report. The competition became internationally famous and 214 competitors, Italian and international, took part.

It can be inferred from the jury's report that particular attention was given to the analysis of the types of foundation to be adopted in the buildings, which were divided into three main categories:

- 1) Rigid foundations;
- 2) Foundations (independent) from the ground, in order to minimise transferring vibrations from the ground to the building, through the application of rollers, balls, springs or other devices.
- 3) Foundations falling within an intermediate category between the two types above, characterised by placing an artificial layer of sand or detrital material between foundation and ground so as to cushion the effect of seismic shock waves.

Earthquake-resistant construction techniques in Italy between 1880 and 1910: alternatives to reinforced concrete

As regards the possibility of making the building independent from its foundation through balls and rollers, earlier precedents were referred to. These included the project designed by engineer David Stevenson (1868) to build lighthouses in Japan, and for which he suggested placing seismic isolators with bronze balls between the foundation and the structure (a system that, however, had proven to be ineffective). Another solution was tested by seismologist John Milne, who had experimented with isolation by means of movable iron balls inside iron cups. These systems were assessed as insufficiently resistant to strong earthquakes and hard to construct. The failure of these experiments, the practical difficulties connected with construction, maintenance, and limited durability and, in some cases, high manufacturing costs, led the jury to rule out the proposals including this type of foundation. Objections were also raised against the third type of foundation. Rigid systems were approved, in particular the suitably reinforced concrete foundation, which, regardless of the geological nature of the ground, was considered able to keep the walls and the piles as united as possible with the foundations.

The dominant construction type was the *baraccata* system in the broadest sense of the term: from the *baraccata* system, which consisted of a traditional wooden framework 'buried' in the masonry structure, to its more modern variations characterised by an iron structure that could be combined not only with blocks of bricks, light tuffaceous stone materials, and perforated and shaped cement blocks, but also with cork sheets, lignum-silex, metal mesh and lathwork. The materials used were divided into four essential categories:

- 1) Shaped and hollow bricks;
- 2) Shaped and hollow cement concrete mixes;
- 3) Cork mixes or wood sawdust materials;
- 4) Natural materials.

The first category specifically included baked clay bricks with perforations and indentations so as to create suitable joints in order to obtain a tightly connected masonry structure, similar to the one proposed by lawyer Bagalà di Palmi (outside the competition), which was a brick system with T-shaped indentations.

Among the competing projects, the one with the slogan *Pro Calabria e Sicilia* by engineers Vittorio Gianfranceschi and Giulio Revere stood out. This project proposed a system, which was then patented, consisting of masonry with suitably reinforced hollow concrete blocks.¹⁸

Traditional masonry constructions were regarded as suitable only for small-sized buildings as long as restrictions on height, suitable thickness, quality of materials and skilful use of metal chains and ring beams were observed.

A considerable number of the projects submitted (43 in all), included the use of a reinforced concrete framed system as an alternative to the most common practice of creating mixed structures in which the use of reinforced concrete was limited to horizontal supports (beams and floors). Nevertheless the Jury recognised how the good performance of this construction system was closely connected, (more than for the other technology solutions), with the good quality of the raw materials and with the quality of construction.

It should also be noted that four of the projects submitted to the competition were based on the principle of resistance due to the shape of the building and there were proposals for circular, hexagonal and

octagonal plans for entire buildings or parts thereof,¹⁹ including a contribution made by Venetian architect Giuseppe Torres. Based on the direct observation of building performance in Messina during the 1908 earthquake, Torres discovered that cylinder-shaped elements such as apses and towers were the most earthquake resistant. The proposed method therefore included the use of a circular floor plan, which was considered to be safer as it was equally resistant to earthquakes from any direction. The original solution of a circular plan building, which was developed for the reconstruction of Messina after 1908, is attributed to Torres. His method of a reinforced concrete “earthquake resistant house”, which was applied in a large number of projects, was also patented (27 January 1909) and published in *La casa antisismica* (1909).²⁰ His proposal, which provocatively went as far as defining an entire city of buildings arranged in a circular matrix, is illustrated by the drawings kept in his archive, such as the projects for various circular houses, for the Chamber of Commerce and Town Hall of Messina (both competitions in 1911), or for the ‘Puleo house’ in the same city. However, these projects were not realized, except for a small number of buildings designed in Abruzzo after the 1915 earthquake. The most economical type of house, which was defined as a ‘hut’, was built in Collaromele (L’Aquila); a single small building erected by the Venetian Relief Committee for the earthquake victims, while two others were built in Avezzano: one of them financed by Neapolitan Prince Federico Spada and the other by the architect himself. It should be noted that another earthquake-resistant construction criterion based on the principle of resistance due to shape can also be seen in the slightly earlier works of seismologist Guido Alfani (1905), (Alfani promoted the use of parabolic shaped masonry), and was noted in the writings by Marco Aurelio Boldi (1910), Francesco Ruffolo (1912), and Francesco Masciari Genoese (1915), among others.²¹

The Jury of the competition decided not to award the first prize, given the fact that “it has not been able to find, in any of the valuable works submitted, and in each single point, the total compliance with the competition requirements, the perfect balance between theory and its practical and economically convenient application”.²² The second prize was awarded to engineer Arturo Danusso, and the third to the abovementioned *Pro Calabria e Sicilia* project. In his thorough report, Turin-born engineer Danusso, one of the most outstanding personalities in the scientific field, presented the design calculation of a building subjected to seismic activity, according to the rules of rational mechanics, linear elasticity and material strength.²³

The full version of Danusso’s report on earthquake-resistant buildings was presented at the XII Congress of Italian Engineers and Architects²⁴ (Florence, 3 to 9 October 1909) which represented another important opportunity to discuss the problem of buildings in seismic zones since an entire section of that Congress was devoted to earthquake-resistant construction. Simultaneously, a specific competition on this subject was announced. Eighteen projects were presented; they were analysed by a Committee made up of representatives of each of the main Italian Associations of Engineers, including engineer Cannizzaro, one of the protagonists of the debate about earthquake-resistant construction in Italy, due to his experience in reconstructing Messina after the 1908 earthquake²⁵ and Marsica after the 1915 earthquake.²⁶ Many of the projects submitted, including one by Danusso which was awarded the first prize, proposed reinforced concrete framed structures, with a few exceptions such as the project presented by architect Francesco Paolo Rivas from Palermo, who proposed two alternative solutions: one structure with a timber frame and the other one with concrete blocks.²⁷ There was a particularly animated discussion within the Congress as regards the building types and standards to be adopted “...in those *seismically* threatened Italian Regions, and especially the Calabria-Sicily Region,”²⁸ which had to be adapted to economy, stability and hygiene criteria without adversely affecting aesthetic appearance.

During the congress, there were initiatives to create a permanent institute for seismic technical studies in Italy run by seismologists and engineers. This institute would foster the study of seismology applied to

Earthquake-resistant construction techniques in Italy between 1880 and 1910: alternatives to reinforced concrete

construction, assess projects to be executed in seismic zones, disseminate knowledge, and coordinate theory and experimental research on this subject. The desire for such organisations was also articulated in the report containing the *Norme edilizie per i paesi soggetti a terremoti* report under *Building Standards*, in which the Committee expressed the need to create dedicated institutes for seismic studies that were to be established “In the main Towns of those regions more prone to earthquakes,”²⁹ in order to “...permanently state the models of the most common buildings, constructed according to the special building regulations, in accordance with local authorities, owners and constructors.”³⁰ These institutes were never created.

However, the idea was revisited a few years later, after the earthquake that hit the area of Marsica in 1915, when the creation of a Geodynamics Building Institute was proposed. Such an institute was to be founded in Avezzano in collaboration with the Italian Geological Society. The purpose of this institute (which was intended as a prototype) was to create:

“A real technical-scientific centre available not only for those who want to conduct theoretical studies and those who want to actually make buildings, but also, more directly, for those who have the job of assessing and controlling [the construction].”³¹

As stated in the report by Roman engineer Gustavo Giovannoni who proposed a reinforced masonry system.³² (Fig. 3).

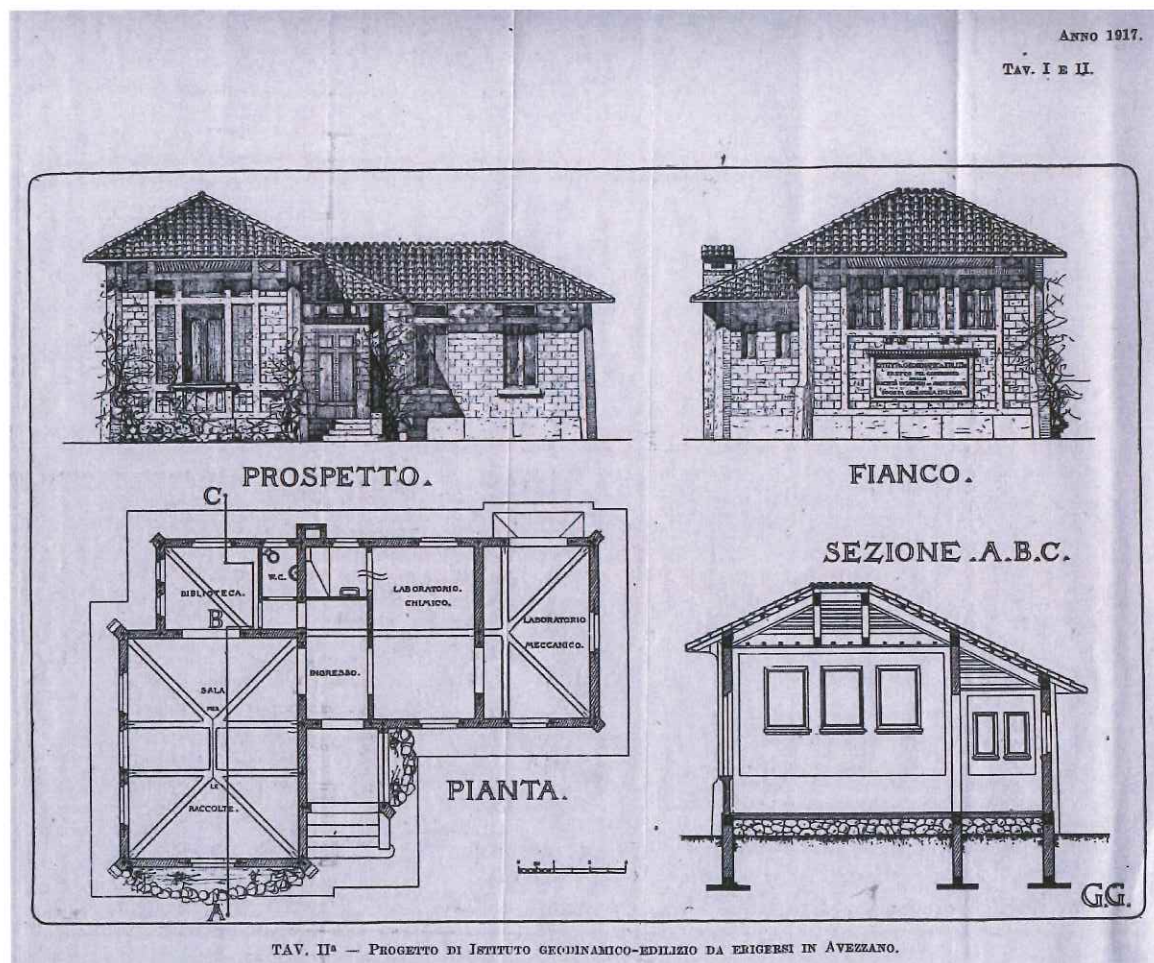


Figure 3. Project of the Geodynamics Building Institute. Avezzano. Engineer Gustavo Giovannoni (G. Giovannoni, ‘Per le costruzioni nei paesi ...’, cit.)

Patents related to alternative solutions to reinforced concrete

In a cultural debate about the topic of earthquake-resistant buildings, the analysis of patents seems interesting. Such patents emerge as proofs of an experimental design approach, each contributing to define the technical (research) scope of this field of study. Whilst patents for earthquake-resistant buildings can be traced back to the second half of the nineteenth century, specifically the ones filed after the 1883 Casamicciola earthquake, it was after the 1908 Messina earthquake that saw a large increase of interest in this field, proof of which is the huge number of patents filed between 1909 and 1910 dealing with construction systems.³³

The patents are part of the document collection of the Italian Ministry of Agriculture, Industry and Commerce and are kept at the State Central Archive headquarters in Rome. The patents substantiate the heterogeneity that characterises the professional *status* of proponents, including, in addition to engineers, small entrepreneurs, master-builders and well-established construction companies.

Upon analysing the patents, besides the solutions based on the application of the new reinforced concrete technology,³⁴ other solutions were developed based on ‘revisiting’ traditional construction techniques. The systems proposed (I will analyse some solutions as examples) included the use of bricks, timber or metal, which in some cases were combined with new and recently introduced materials such as Eternit and lignum-silex. It should be noted that, in some instances, the studies are supported – even then – by rigorous calculation methods similar to those offered by modern construction science.

Masonry structures

Within the large category of masonry structures, there are two main types that reassess the traditional construction type. The first one includes masonry that features a ‘tongue-and-groove joint’, the second, reinforced masonry. Both types have several variants.

The solution proposed by engineer Francesco Pisani, from the Civil Engineers Corps, features a masonry construction consisting of ‘special’ bricks, shaped in such a way as to create a tongue-and-groove jointed system (without mortar) to create a masonry construction as monolithic as possible. The construction system was explained in the publication entitled *Osservazioni e note sul terremoto calabro-siculo del 28 dicembre 1908 e sul modo di resistere degli edifici in muratura contro gli urti sismici. Proposta di una nuova forma di materiale laterizio per costruzione di muri monolitici asismici (Observations and Notes on the Calabria-Sicily Earthquake of 28 December 1908 and on the Way in which Masonry Buildings Withstand Earthquakes. Proposal of a New Form of Brick Material for Constructing Aseismic Monolithic Walls)*,³⁵ containing an explanatory text and some drawings. Pisani’s proposal was the result of the direct observation and survey of a large number of buildings damaged in Calabria and Messina after the earthquakes that struck this area on 8 September 1905, on 23 October 1907, and particularly on 28 December 1908. After realizing that “in the above mentioned towns, the single masonry structure is not known, for houses, as the most suitable type based on the weather and the needs of local life”,³⁶ he directed his studies to solving the problem related to the construction of monolithic walls. Taking into account two essential earthquake resistant principles, i.e. as much homogeneity as possible in the density of the materials and the progressive reduction of the weight of the building elements from the bottom to the top, Pisani proposed the use of tongue-and-groove jointed bricks “to be used full and therefore heavy in the lower parts of the building and gradually perforated, and therefore lighter, as going upwards”.³⁷ With this system, walls of any form and size could be built, erected dry by means of a tongue-and-groove joint system. This system was illustrated by specific drawings, which guaranteed perfect jointing between the elements. The problem of how to connect the elements in the corners was solved by means

Earthquake-resistant construction techniques in Italy between 1880 and 1910: alternatives to reinforced concrete

of special elements, of two shapes matching the tongue-and-groove jointed bricks. The construction system was illustrated by means of some practical examples, which showed possible combinations among the elements in order to build different types of walls.

A similar system was presented by Ulisse Manfredi, who proposed a construction system made up of custom bricks with special internal grooves within which elements were fitted vertically so as to form a monolithic structure without the aid of mortar. (Fig. 4) The possibility of constructing walls of different thicknesses (300 mm, 450 mm and 600 mm) was ensured by combining seven different types of bricks, one of which (marked A) and measuring 290 mm x 140 mm x 65 mm, was arranged vertically.³⁸ Nevertheless, it should be noted that – in spite of differences among patents – the tongue-and-groove joint brick system was not new and at the end of the nineteenth century, it had already been recommended by Milne, who applied it in some Japanese buildings, as reported by engineer Alfredo Montel.³⁹

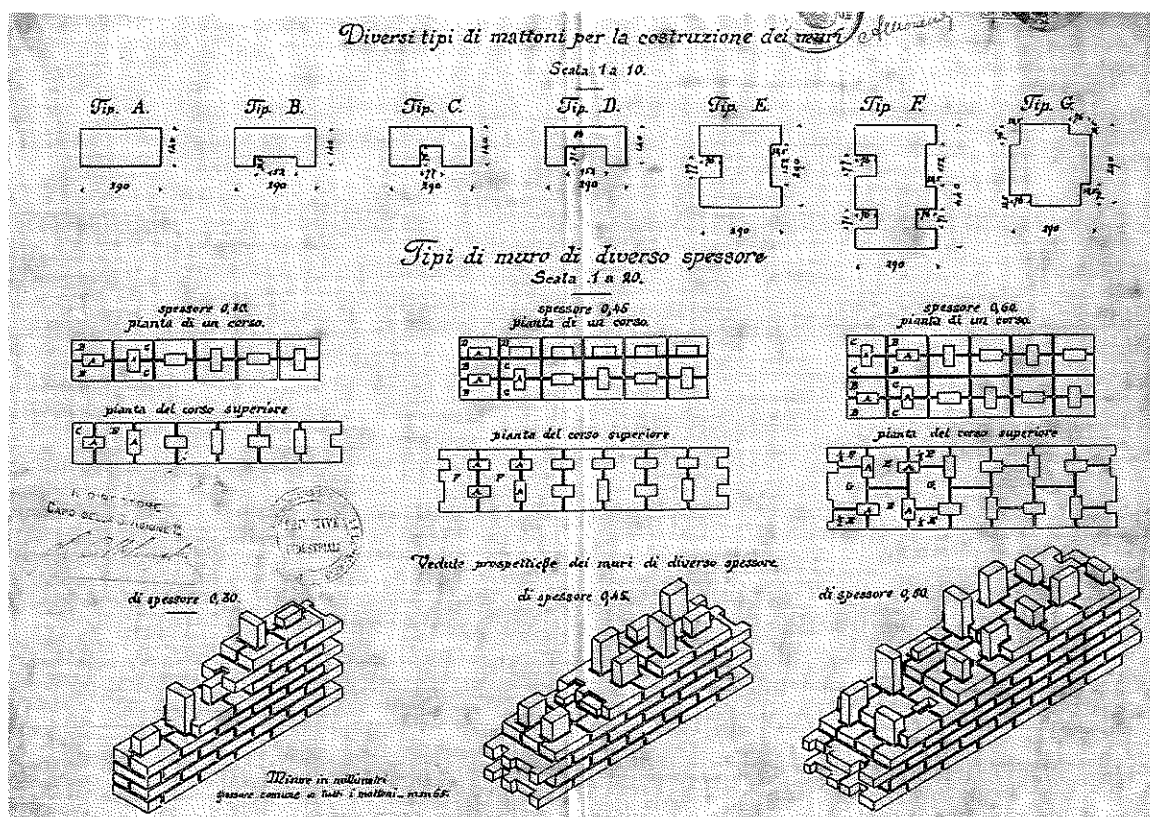


Figure 4. Masonry construction system by Ulisse Manfredi (State Central Archive, Italian Ministry of Agriculture, Industry and Commerce, Central Patent Office, no. 100457. By courtesy of the Ministry of Cultural Heritage and Activities, ACS, 2016, permission no. 1419/2016)

A series of patents belongs to the reinforced masonry category, including the *Grooved Brick for Building Reinforced Walls* by Leopoldo Gigli from Florence. This system consisted of the use of solid or hollow bricks, made of either baked clay or concrete. Their particular feature lies in the presence (in each of the elements) of a “groove or cut through which an iron or steel wire can be easily pass through inside the brick as reinforcement”.⁴⁰ (Fig. 5).

Shaped concrete blocks were also described in the patent by Francesco Castorina (Fig. 6),⁴¹ in the project by engineers Vittorio Gianfranceschi and Giulio Revere (already mentioned), and in that by constructor Drinnaco Valentini.⁴²

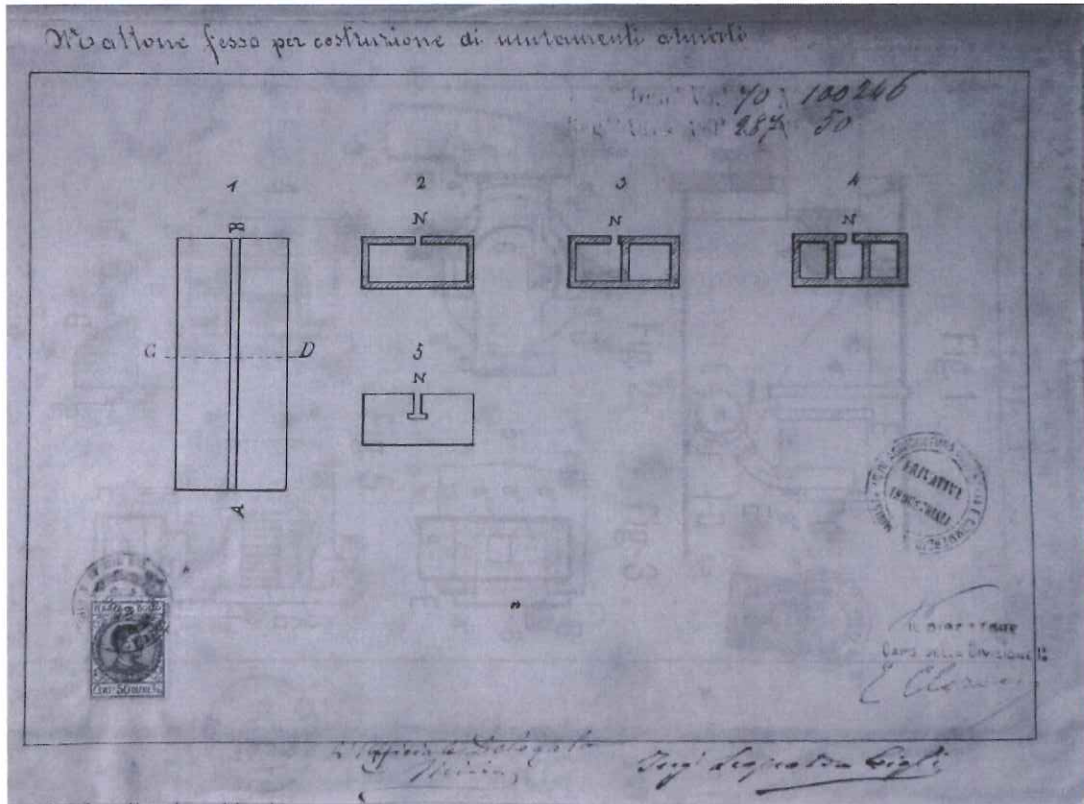


Figure 5. Grooved Brick for Building Reinforced Walls by Leopoldo Gigli (State Central Archive, Italian Ministry of Agriculture, Industry and Commerce, Central Patent Office, no. 100246. By courtesy of the Ministry of Cultural Heritage and Activities, ACS, 2016, permission no. 1419/2016)

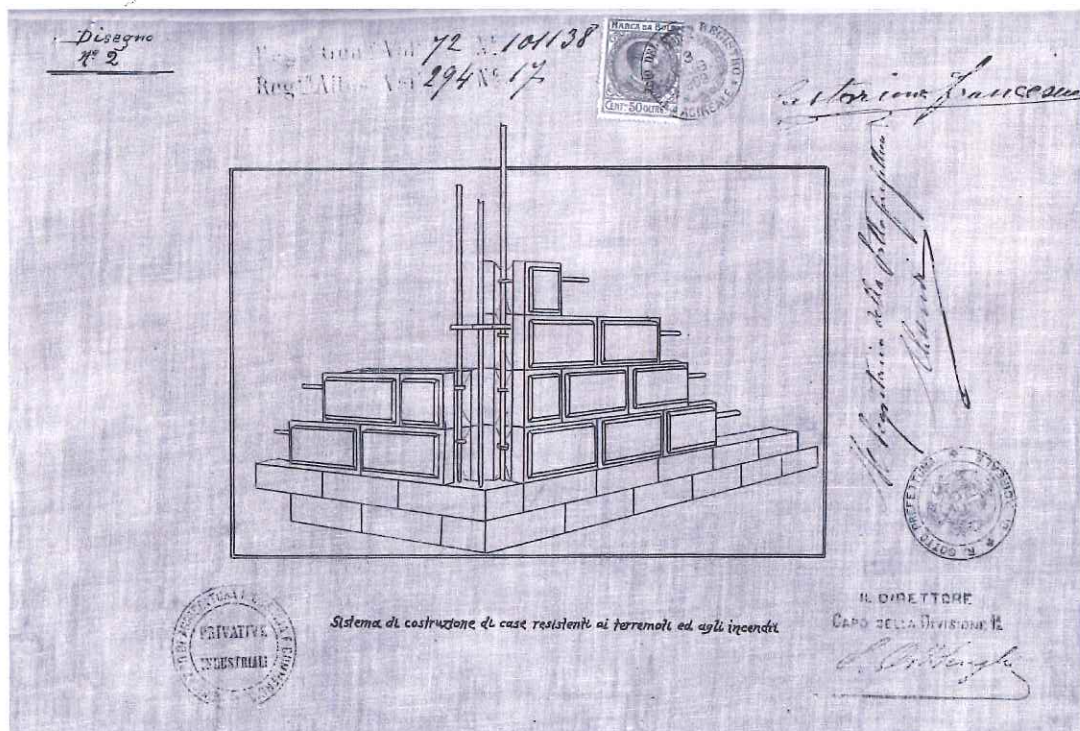


Figure 6. Concrete blocks for earthquake construction system by Francesco Castorina (State Central Archive, Italian Ministry of Agriculture, Industry and Commerce, Central Patent Office, no. 101138. By courtesy of the Ministry of Cultural Heritage and Activities, ACS, 2016, permission no. 1419/2016)

Earthquake-resistant construction techniques in Italy between 1880 and 1910: alternatives to reinforced concrete

This final project mentioned also included an iron T-shaped perimeter plate to which the iron beams of the floors were to be anchored by means of bolts. At the same time, this prevents the beams of the floors from becoming loose and the walls from over turning. (Fig. 7)

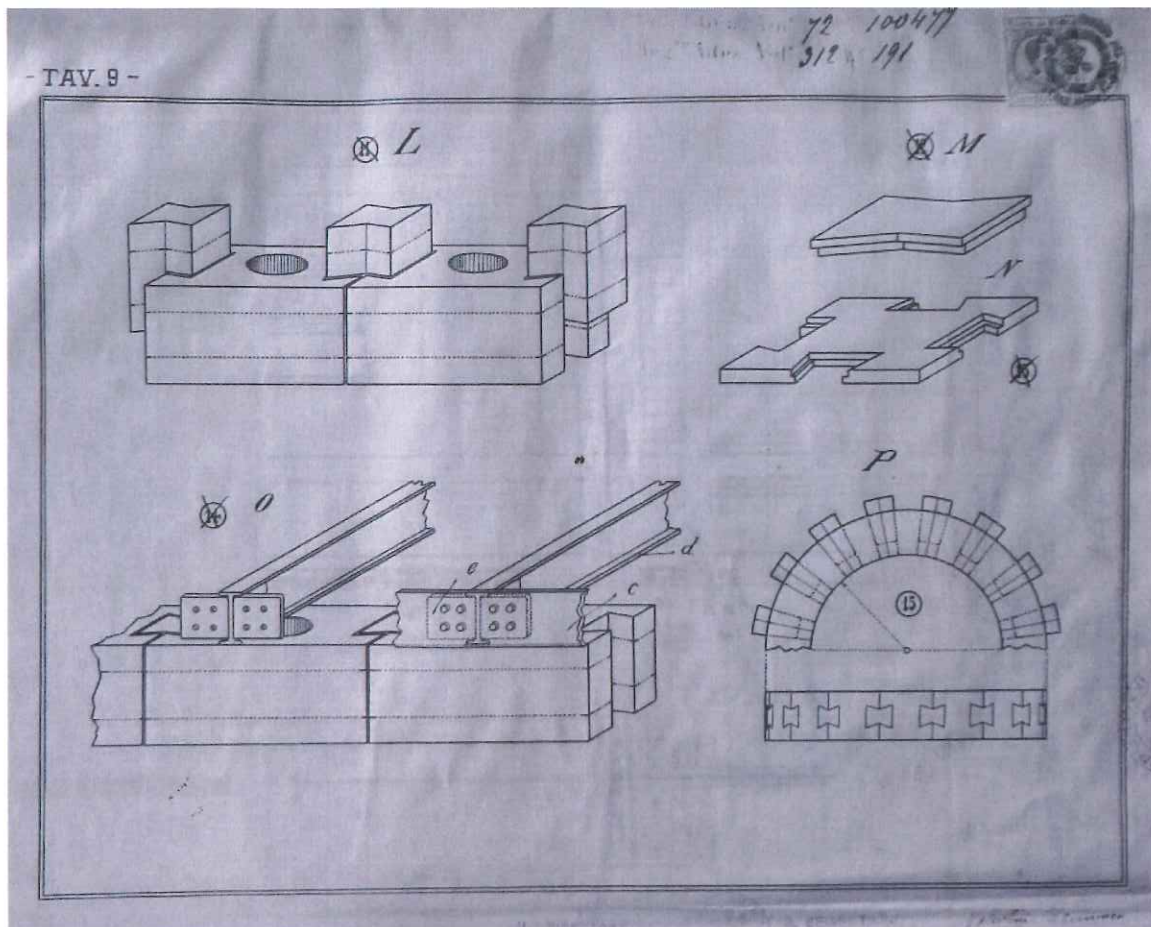


Figure 7. Concrete blocks for earthquake construction system by Drinnaco Valentini (State Central Archive, Italian Ministry of Agriculture, Industry and Commerce, Central Patent Office, no. 100477. By courtesy of the Ministry of Cultural Heritage and Activities, ACS, 2016, permission no. 1419/2016)

Timber Structures

Among the patented timber structures, the *baraccata* system variants continued to prevail, including Luigi Lanza's *Type of House with Timber Skeleton and Stretched Sheet*, which utilised a traditional timber skeleton made up by uprights, beams and diagonal rods with a skin (both inside and outside) of metal mesh and cement mortar, and covered with Eternit slates.⁴³ (Fig. 8)

The use of traditional materials was proposed by Pasquale Frezza from Calabria, who in his *Construction System of Earthquake-Resistant Houses*⁴⁴ suggested a timber cage resting on a concrete foundation, which was characterised by bolted connections and an infill wall made up of bricks and small empty clay conduits, elements that were already widespread in Calabria in the 1783 post-earthquake construction practices, and which met the infill material lightness requirement that was requested in seismic zones. (Fig. 9)

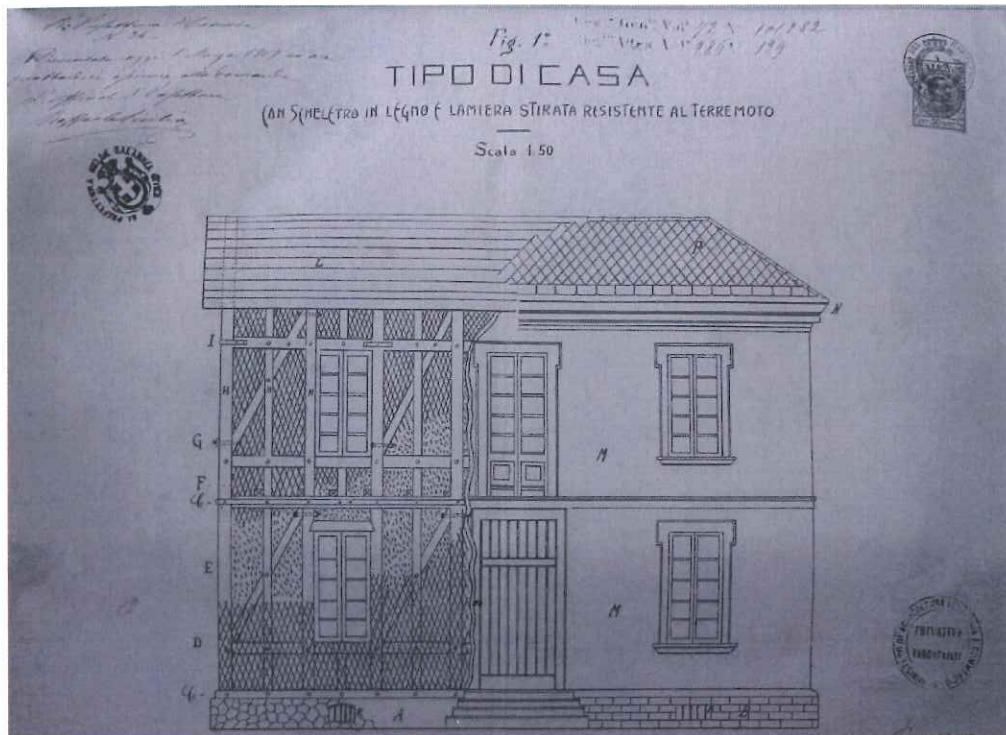


Figure 8. Type of House with Timber Skeleton and stretched sheet by Luigi Lanza (State Central Archive, Italian Ministry of Agriculture, Industry and Commerce, Central Patent Office, no. 101282. By courtesy of the Ministry of Cultural Heritage and Activities, ACS, 2016, permission no. 1419/2016)

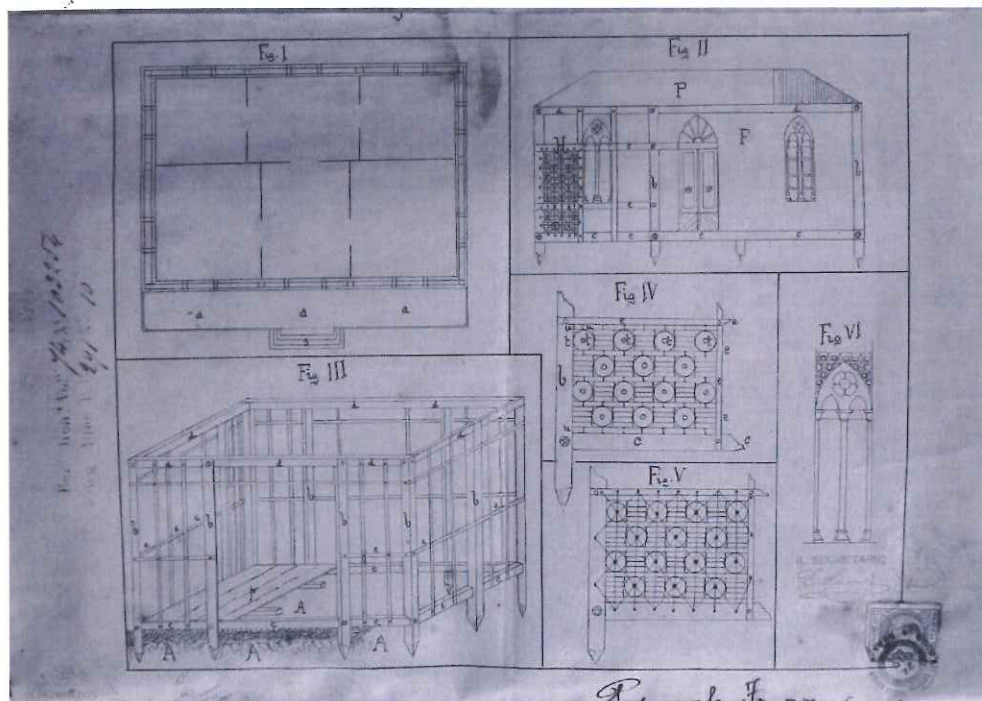


Figure 9. Type of House with Timber Skeleton by Pasquale Frezza (State Central Archive, Italian Ministry of Agriculture, Industry and Commerce, Central Patent Office, no. 103254. By courtesy of the Ministry of Cultural Heritage and Activities, ACS, 2016, permission no. 1419/2016)

Earthquake-resistant construction techniques in Italy between 1880 and 1910: alternatives to reinforced concrete

Raffaele Di Martire presented an invention made up of timber beams reinforced with metal wires applied to the lower edge, which were subject to tension.⁴⁵ Such wires were folded on the heads and anchored with nails to the upper edge. Specific details were designed for the corners in order to prevent the wires from penetrating the wood and becoming damaged when folded. As a result of this innovation, the resistance to bending of the timber beam was significantly increased. (Fig. 10).

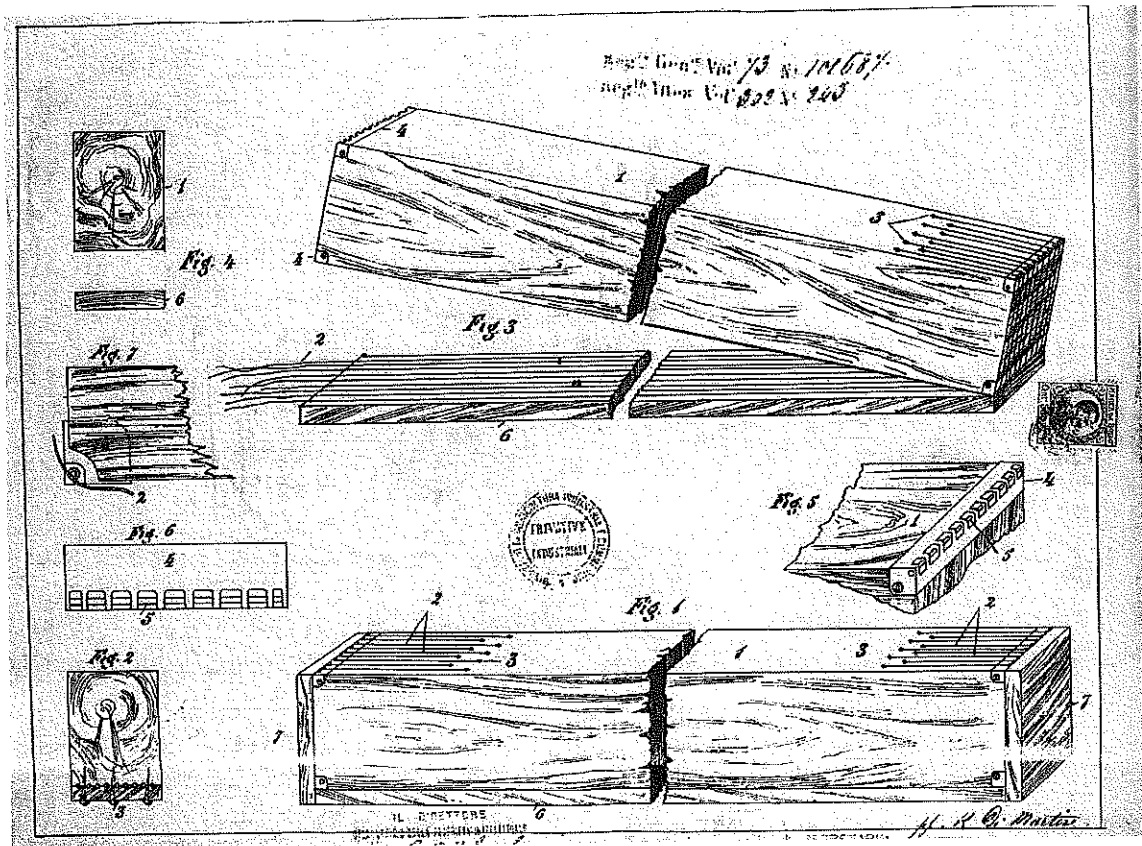


Figure 10. Reinforced timber beam by Raffaele Di Martire (State Central Archive, Italian Ministry of Agriculture, Industry and Commerce, Central Patent Office, no. 101687. By courtesy of the Ministry of Cultural Heritage and Activities, ACS, 2016, permission no. 1419/2016)

Iron Structures

A significant number of patents employed the use of iron structures. The lightweight construction system proposed by Luigi Lanza is characterised by the use of iron beams of different sizes, with H-shaped sections for columns and I-shaped sections for beams.⁴⁶ The variously proposed infill panels include hollow clay blocks, tiles and mortar applied on an expanded metal mesh. The infill panels are restrained (reinforced) by metal wires, which zigzag between the flanges of the iron sections to create a lightweight system that also limits seismic effects. (Fig. 11)

A similar system was proposed by Arnolfo Schindler with a framed structure made up of a pair of I-shaped beams running horizontally that limit wall thickness, combined with T-shaped vertical uprights at openings and wall crossings, to which two layers of metal mesh to be rendered are connected.⁴⁷ (Fig. 12)

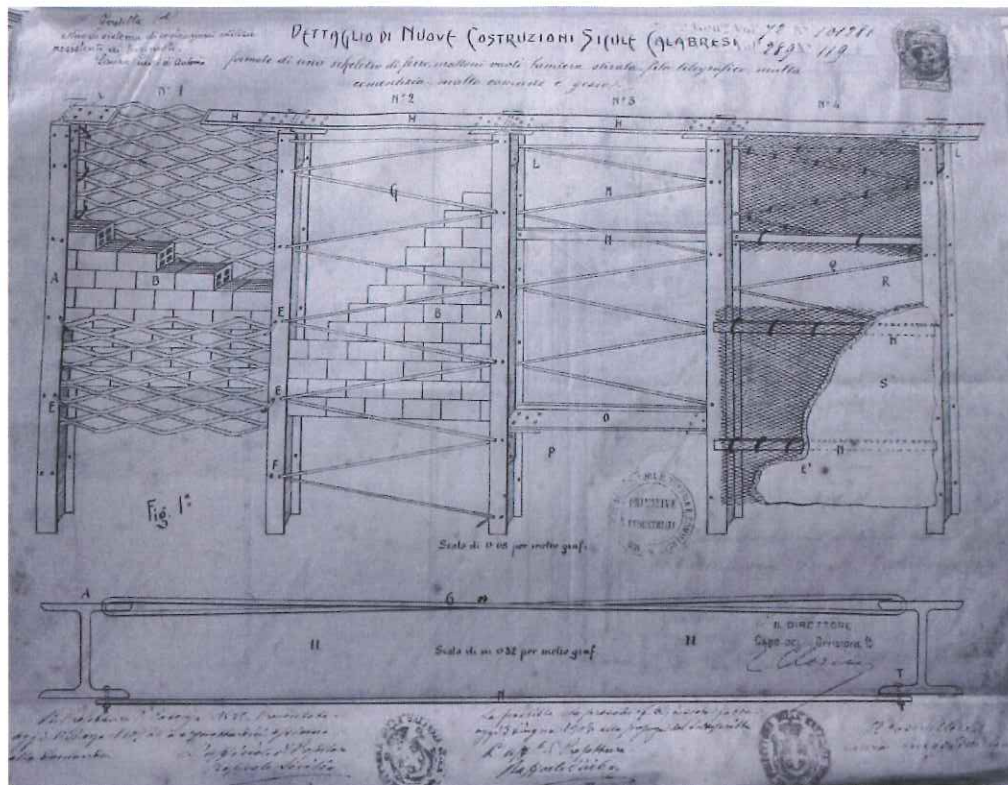


Figure 11. Construction system by Luigi Lanza (State Central Archive, Italian Ministry of Agriculture, Industry and Commerce, Central Patent Office, no. 101281. By courtesy of the Ministry of Cultural Heritage and Activities, ACS, 2016, permission no. 1419/2016)

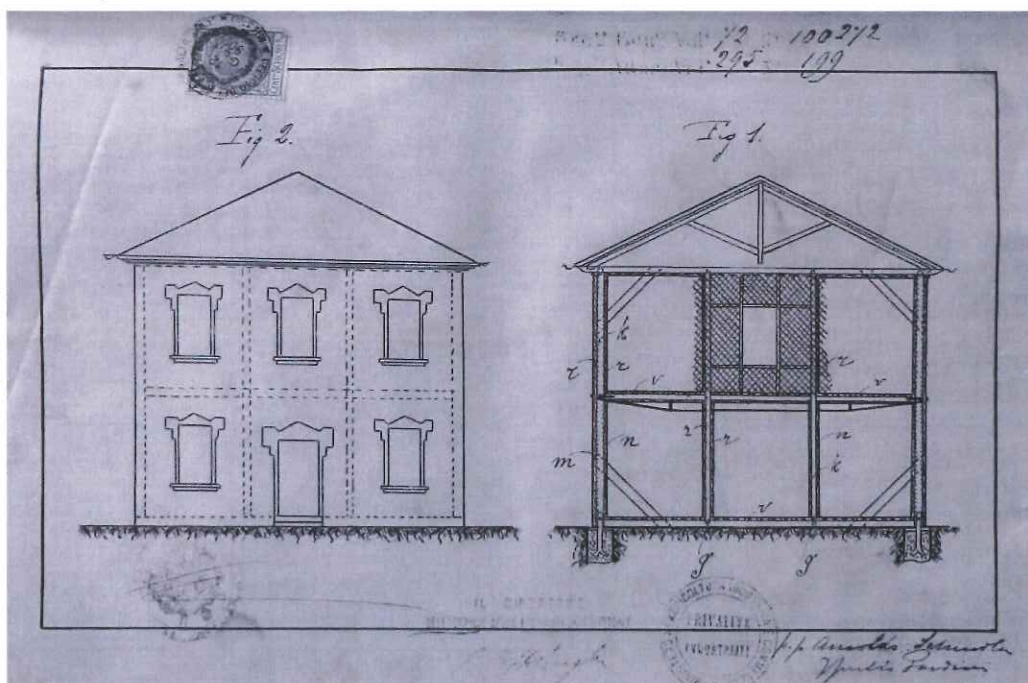


Figure 12. Elevation and section of the construction system by Arnaldo Schindler (State Central Archive, Italian Ministry of Agriculture, Industry and Commerce, Central Patent Office, no. 100272. By courtesy of the Ministry of Cultural Heritage and Activities, ACS, 2016, permission no. 1419/2016)

Earthquake-resistant construction techniques in Italy between 1880 and 1910: alternatives to reinforced concrete

Engineers Paolo Baravelli and Aristide Giannelli patented a system for buildings with a metal skeleton which was published in 1913 in the *Annali della Società degli Ingegneri ed Architetti Italiani*.⁴⁸ The study was supported by a rigorous calculation method, which took into consideration the structure's hyperstatic condition, adopting analytical methods developed by Giannelli.

Conclusions

The frequent earthquakes that affected southern Italy between the nineteenth and the twentieth centuries spurred a deep reflection on the issue of earthquake-resistant buildings. This paper reports the state of the art of seismic knowledge and construction technologies especially in relation to the debate held in Italy immediately after the 1908 Messina and Reggio Calabria earthquake. Particular focus is given to research on proposals for new construction systems created as alternatives to reinforced concrete technology. Although highly reliable, reinforced concrete technology had some disadvantages as regards material quality and workmanship, the latter being in the hands of companies using patented techniques, which resulted in high costs. The analysis of alternative solutions to reinforced concrete, supported by the description of the main systems proposed and by figures, shows the interest of technical knowledge in structures built in seismic areas, with designs dealing with futuristic solutions (seismic insulation) or revisited versions of traditional masonry construction techniques. The proposals using timber and iron framed structures are also mentioned. The solutions including iron were limited by the high cost of the metal, even more so than those using reinforced concrete. Records show some important solutions that were awarded prizes, given recognition by the committees of competitions, or were the basis for patents. The different solutions for earthquake-resistant construction systems based on a reassessment of traditional construction techniques have a strong cultural value in that they mirror the construction skills of that time that tried to find solutions to the appalling destruction caused by earthquakes, an issue of contemporary relevance today.

Acknowledgements

The research has received funding from the European Research Council under the European Union's Seventh Framework Programme (FP7/2007-2013)/ERC grant agreement n° 295960 - COSMED.

The Author

Federica Scibilia obtained her PhD in History of Architecture and Conservation of Architectural Heritage in 2009 (University of Palermo, Italy). She was involved as a post-doctoral researcher in the scientific project *COSMED* – From stereotomy to antiseismic criteria: crossroads of experimental design. Sicily and Mediterranean (century) funded by the European Research Council.

Scibilia has taught History of Architecture at both the University of Palermo and University Kore of Enna and she is member of the editorial board of the scientific journal *Lexicon. Storie e Architettura in Sicilia e nel Mediterraneo*.

Scibilia is the author of several monographs and articles and her research has focused on both contemporary Sicilian architecture and the relationship between earthquakes and historic architecture.

Contact details: Dr. Federica Scibilia (PhD), Department of Architecture, University of Palermo, Viale delle Scienze, Ed. 8, 90128 Palermo, Italy. Email: federica.scibilia@unipa.it, federica.scibilia@libero.it

Notes and References

1. Decree by the Italian Ministry of Public Works of 10 January 1907 published in the Official Journal No. 28 of 2/2/1907, which foresaw the use of calculation criteria based on the method of admissible tensions. For the evolution of earthquake-resistant standards with particular reference to the first half of the Twentieth century, see: F. Piccarretta, F. de Cesaris, 'La cultura della normativa antisismica e la sua evoluzione', in S. Valtieri, (Ed.), *28 December 1908. La grande ricostruzione dopo il terremoto del 1908 nell'area dello Stretto*, Roma: Clear, 2008, pp. 762-797.
2. G. Vivencio, *Istoria e teoria de' tremuoti in generale, ed in particolare di quelli della Calabria e di Messina del 1783*, Napoli: Stamperia Regale, 1783. On the *baraccato* system see: S. Tobriner, *La Casa Baraccata: Earthquake-Resistant Construction in 18th-Century Calabria*. *Journal of the Society of Architectural Historians*, Vol. 42, 2, 1983, pp. 131-138; O. Niglio, 'La casa baraccata nella storia dell'architettura antisismica. L'esperienza calabrese dopo il terremoto del 1783', in A. Parducci, *L'evoluzione delle concezioni antisismiche tra inerzie e incompressioni. Dalle case baraccate del periodo borbonico alle nuove tecniche dell'isolamento sismico*, Novedrate (CO): Università degli Studi eCampus, 2009; N. Ruggieri, *Il sistema antisismico borbonico muratura con intelaiatura lignea: genesi e sviluppo in Calabria alla fine del '700*. *Bollettino degli Ingegneri*, 10, 2003, pp. 3-14; N. Ruggieri, G. Tampone, R. Zinno Raffaele (Eds.), *Historical Earthquake resistant timber frames in Mediterranean area*. Proceedings of the HEaRT 2013 Conference, Cosenza. Cham: Springer, 2015.
3. One of the first examples is the palace of the Count of Nocera in Filogaso (circa 1638) see G. Vivencio, (see Note 2). On the application of this construction system in Abruzzo see M. D'Antonio, *Ita terraemotus damna impedire. Note sulle tecniche antisismiche storiche in Abruzzo*, Pescara: Carsa edizioni, 2013.
4. *Regolamento edilizio da osservarsi per le fabbriche nel Comune di Norcia (Building Regulations to be observed for the buildings in the City of Norcia)*, 17 November 1859.
5. L. Pesso, 'Sul consolidamento delle fabbriche nelle Calabrie contro i danni dei terremoti', *L'Ingegneria civile e le arti industriali*, III, fasc. 9, 1876.
6. *Regolamento Edilizio per i comuni dell'Isola di Ischia danneggiati dal terremoto del 28 luglio 1883 (Building Regulations for the towns of the Island of Ischia damaged by the 28 July 1883 earthquake)*, Royal Decree 29 August 1884.
7. Cfr. F. Polverino, *Ischia. Architettura e terremoto*, Naples: Clean, 1998.
8. *Regolamento contenente le norme per la costruzione ed il restauro degli edifici nei comuni liguri danneggiati dal terremoto del 22 febbraio 1887 (Regulations that include the standards to build and reconstruct the buildings in the towns of Liguria damaged by the 22 February 1887 earthquake)*, Royal Decree 13 November 1887.
9. 'Il terremoto del 16 novembre 1894 in Calabria e Sicilia. Relazione scientifica della Commissione incaricata degli studi dal Real Governo', *Annali dell'Ufficio Centrale Meteorologico e Geodinamico Italiano*, vol. 19 1897, Roma, Tipografia Nazionale di G. Bertero e C., 1907. Cfr. F. Scibilia, 'Tecniche costruttive antisismiche in Calabria tra la fine dell'Ottocento e l'inizio del Novecento', in A. Guida, A. Pagliuca (eds.), *Colloqui.AT.e 2016. MATER(i)A. Materials, Architecture, Technology, Energy/Environment, Reuse (Interdisciplinary), Adaptability*, Proceedings of the International Congress Artec (12-14 October 2016), Roma: Gangemi, 2016, in cd-rom.
10. Cfr. M. Cortés y Agulló, *Los terremotos, sus efectos en las edificaciones y medios practicos para*

- evitarlos en lo posible. Memoria escrita en 1873 por el comandante de Ingenieros del Ejército Don Manuel Cortés y Agulló y revisada en 1880*, Manila: Tip. de Ramirez y Giraudier, 1881.
11. For the patents for earthquake-resistant buildings by the end of the Nineteenth century, see M. Savorra, 'Dalla catastrofe al progresso. Idee e proposte per le costruzioni antisismiche nel XIX secolo', in L. Mozzoni, S. Santini, (Eds.), *Il mito del progresso e l'evoluzione tecnologica*, Proceedings of the III congress (Jesi, 12-13 June 2000), Napoli: Liguori, pp. 211-245, which is to be referred to for further bibliography on this subject.
 12. Cfr. *Norme per le costruzioni, ricostruzioni e riparazioni di edifici privati, pubblici e di uso pubblico nella regione calabrese e nei comuni della provincia di Messina danneggiati dal terremoto (Standards to build, reconstruct and repair private and public buildings and buildings for public use in the Calabria region and in the towns of the Province of Messina that were damaged by the earthquake)*, Royal Decree 16 September 1906.
 13. Anonymous, 'Ancora per la ricostruzione delle città distrutte. La iniziativa per la costituzione di una Società nazionale intesa allo scopo', *Il Monitore tecnico*, no. 2, 1909, pp. 35-36.
 14. G. De Angelis d'Ossat, A. Pacchioni, 'Norme edilizie per i paesi soggetti a terremoti', *Annali della Società degli Ingegneri e Architetti Italiani*, no. 7, XXIV, 1909, pp. 177-217. The proposals formulated by the Committee were turned into law in the subsequent *Norme tecniche ed igieniche obbligatorie per le riparazioni, ricostruzioni e nuove costruzioni degli edifici pubblici e privati nei Comuni colpiti dal terremoto di Messina e Reggio Calabria (Mandatory technical and hygiene standards to construct new buildings and to repair and reconstruct existing ones, both public and private, in the towns that were hit by the Messina and Reggio earthquake)*, Royal Decree 6 September 1912.
 15. G. Lescasse, *Etude sur les Constructions Japonaises et sur les constructions en général au point de vue des tremblements de terre, et descriptions d'un système destiné à donner une grande sécurité [aux constructions en maçonnerie]*, Paris: impr. de E. Capiomont et V. Renault, 1877.
 16. J. Milne, 'Earthquakes and Buildings', *Nature*, vol. XXIX, 1884, pp.290-291; Id., 'On Construction in Earthquake Countries', *Minutes of Proceedings of the Institution of Civil Engineers*, no. 83, 1886, pp. 278-291.
 17. Anonymous, 'Programma del Concorso per Costruzioni Edilizie nelle Regioni Italiane Soggette a Movimenti Sismici', *Il Cemento*, no. 2, 1909, pp.17-18; Anonymous, 'Concorso per Costruzioni Edilizie nelle Regioni Italiane Soggette a Movimenti Sismici', *Il Cemento*, no. 10, 1909, p. 158; Anonymous, 'L'esito del Concorso di Costruzioni per Regioni Sismiche', *Il Cemento*, no. 12, 1909, pp. 181-182; Anonymous, 'Relazione della Giuria del Concorso per Costruzioni Edilizie nelle Regioni Italiane Soggette a Movimenti Sismici Indetto dalla Società Cooperativa Lombarda di Lavori Pubblici sotto gli Auspici del Collegio degli Ingegneri ed Architetti di Milano', *Il Cemento*, no. 18, 1909, pp. 273-277; no. 19, 1909, pp. 292-297; Anonymous, 'Programma del Concorso per Costruzioni Edilizie nelle Regioni Italiane Soggette a Movimenti Sismici', *Il Monitore Tecnico*, no. 2, p. 36; Anonymous, 'Le Deliberazioni della Giuria del Concorso per le Costruzioni Antisismiche Bandito dalla Cooperativa Lombarda dei Lavori Pubblici', *Il Monitore Tecnico*, no. 18, 1909, p. 348; Anonymous, 'Relazione della Giuria del Concorso per Costruzioni Edilizie nelle Regioni Italiane Soggette a Movimenti Sismici Indetto dalla Società Cooperativa Lombarda di Lavori Pubblici sotto gli Auspici del Collegio degli Ingegneri ed Architetti di Milano', *Il Monitore Tecnico*, no. 26, 1909, pp. 501-504; no. 27, 1909, pp.522-526; no. 28, 1909, pp. 543-546.
 18. Cfr. V. Gianfranceschi, G. Revere, *Pro Calabria e Sicilia: concorso per costruzioni edilizie nelle regioni italiane soggette a movimenti sismici, per iniziativa della società Cooperativa Lombarda dei lavori pubblici* Milan 1909, Lodi: Tip. Succ. Wilmant, 1909; see also P. Faccio, G. Bruschi, P. Scaramuzza, A. Vanin, 'Brevetti per edifici asismici. Tra teoria e pratica', in S. Valtieri, (Ed.), 28 dicembre, (see Note 1), pp. 1044-1067, in particular pp. 1063-1064.
 19. See in particular the following projects: Vincenzo Margari (no. 40), Carlo Cisari (no. 115),

- arch.Giuseppe Torres (no. 153) and Leone Pratesi (no. 175). Cfr. Anonymous, *Relazione della Giuria*, (see Note 17).
20. Cfr. G. Torres, *La casa antisismica. brevetto 27 gennaio 1909*, Roma: Cooperativa tipografica Manuzio, 1909; R. Domenichini, (Ed.), *Giuseppe Torres 1872-1935. Inventario analitico dell'archivio*, Padova: Il Poligrafo, 2001; N. Pirazzoli, *Il 'metodo Torres'. Progetti e scritti di edifici antisismici ('case rotonde'):per la Ricostruzione di Messina e Reggio*, in S. Valtieri, *28 dicembre*, (see Note 1), pp. 928-943.
 21. Cfr. G. Alfani, *I terremoti e le case. Appunti popolari di sismologia*, Florence: Alfieri e Venturi editori, 1905; M. A. Boldi, *Le case popolari: monografia completa tecnico-economico-sociale*, Milan: Hoepli, 1910; F. Ruffolo, *La stabilità sismica dei fabbricati*, Roma: L'elettricista, 1912; F. Masciari Genoese, *Trattato di costruzioni antisismiche preceduto da un corso di sismologia*, Milan: Hoepli, 1915.
 22. Anonymous, 'Relazione della giuria', (see Note 17), pp. 543-546, p. 545.
 23. The work submitted was made up two parts: a theoretical one, which consisted in a long report, and a practical one, in which a draft project of a house was presented. Cfr. L. Sorrentino, 'The early entrance of dynamics in earthquake engineering: Arturo Danusso's contribution', *ISET Journal of Earthquake Technology*, vol. 44, no. 1, 2007, pp. 1-24.
 24. Anonymous, 'XII Congresso degli Ingegneri e degli Architetti in Firenze nel 1909', *Il Cemento*, no. 10, 1909, pp.158-160; Anonymous, 'Il XII Congresso degli Ingegneri e degli Architetti in Firenze (Ottobre 1909)', *Il Cemento*, no. 21, 1909, pp. 333-335; Anonymous, 'XII Congresso degli Ingegneri e Architetti Italiani, Florence 1909. Concorso per Costruzioni Antisismiche', *Il Monitore Tecnico*, no. 36, 1909, pp.709-711.
 25. E. M. Cannizzaro, 'Come ricostruire Messina. Osservazioni e proposte', *Nuova Antologia di lettere, Scienze ed Arti*, vol. CXL, 1909, pp. 119-127.
 26. After the 1915 earthquake Cannizzaro published some earthquake-resistant house projects. See G. Giovannoni, 'Per le costruzioni nei paesi del terremoto marsicano. Relazione della Commissione sociale', *Annali d'ingegneria e d'architettura*, no. 4, 1917, pp. 49-59.
 27. The other projects selected were those by engineer Giuseppe Marrucchi and Professor Arturo Bruttini (second prize), by engineer Clemente Pedretti (3rd) and engineer Luigi Vittorio Rossi (4th).
 28. Anonymous, 'XII Congresso', (see Note 24), p. 159.
 29. 'Norme edilizie per i paesi', (see Note 14), p. 205.
 30. *ibid.*
 31. G. Giovannoni, 'Per le costruzioni nei paesi del terremoto marsicano. Relazione della Commissione sociale', *Annali d'ingegneria*, (see Note 26), p. 59.
 32. Cfr. F. Scibilia, 'Il contributo di Gustavo Giovannoni al dibattito sulle costruzioni antisismiche nella prima metà del Novecento', Proceedings of the International Congress *Gustavo Giovannoni. L'architetto integrale* (Roma, Accademia di San Luca, 25-27 November 2015), in press.
 33. For a general framework on the patents for earthquake-resistant buildings in Italy between 1909 and 1910, see C. Barucci, *La casa antisismica: Prototipi e brevetti: materiali per una storia delle tecniche e del cantiere*, Roma: Gangemi, 1990.
 34. On reinforced concrete patents after the 1908 earthquake see O. Fiandaca, 'Un quinquennio di brevetti sulla costruzione antisismica. Consensi e resistenze sul patrimonio tecnico ideato', in O. Fiandaca, R. Lione, (Eds.), *Il Sisma. Ricordare prevenire progettare*, Città di Castello (PG): Alinea, 2009, pp. 73-82; P. Faccio, G. Bruschi, P. Scaramuzza, A. Vanin, *Brevetti*, (see Note 18); O. Fiandaca, *Le béton armé "système Hennebique" a Messina fra XIX e XX secolo. Dalle sperimentazioni pre-terremoto del brevetto alle sue declinazioni antisismiche*, Roma: Aracne, 2014.
 35. F. Pisani, *Osservazioni e note sul terremoto calabro-siculo del 28 dicembre 1908 e sul modo di resistere degli edifici in muratura contro gli urti sismici. Proposta di una nuova forma di materiale*

Earthquake-resistant construction techniques in Italy between 1880 and 1910: alternatives to reinforced concrete

laterizio per costruzione di muri monolitici asismici, Pisa: dalla tipografia O. Proseri, 1911.

36. *ibid.* p. 8.
37. *ibid.* p. 32.
38. State Central Archive, Italian Ministry of Agriculture, Industry and Commerce, Central Patent Office, no. 100457, in C. Barucci, (see Note 33), p. 103.
39. A. Montel, *Le case nelle regioni sismiche e la scienza delle costruzioni*, Torino: S. Lattes & C., 1910, p. 89.
40. State Central Archive, Italian Ministry of Agriculture, Industry and Commerce, Central Patent Office, no. 100246, in C. Barucci, (see Note 33), p. 96.
41. State Central Archive, Italian Ministry of Agriculture, Industry and Commerce, Central Patent Office, no. 101138, in C. Barucci, (see Note 33), p. 97.
42. State Central Archive, Italian Ministry of Agriculture, Industry and Commerce, Central Patent Office, no. 100477, in C. Barucci, (see Note 33), pp. 98-102.
43. State Central Archive, Italian Ministry of Agriculture, Industry and Commerce, Central Patent Office, no. 101282, in C. Barucci, (see Note 33), pp. 116-117.
44. State Central Archive, Italian Ministry of Agriculture, Industry and Commerce, Central Patent Office, no. 103254, in C. Barucci, (see Note 33), pp. 118-119.
45. State Central Archive, Italian Ministry of Agriculture, Industry and Commerce, Central Patent Office, no. 101687, in C. Barucci, (see Note 33), p. 114.
46. State Central Archive, Italian Ministry of Agriculture, Industry and Commerce, Central Patent Office, no. 101281, in C. Barucci, (see Note 33), pp. 120-121.
47. State Central Archive, Italian Ministry of Agriculture, Industry and Commerce, Central Patent Office, no. 100272, in C. Barucci, (see Note 33), pp. 126-127.
48. P. Baravelli, A. Giannelli, *Su un nuovo tipo di costruzione antisismica*, extract from *Annali della Società degli Ingegneri ed Architetti Italiani*, nn. 23-24, 1913, Roma: Imp. L'Universelle, 1914.